

1 Q. **Reference: CA-NLH-020**

2 Please provide a summary table showing capital spending amounts applied for and spent on the
3 transmission systems for Hydro’s Island Interconnected customers and Labrador Interconnected
4 customers, and combined for the two systems for each of the past 20 years. Please include a
5 graph showing these costs in both nominal and inflation-adjusted terms over the same period.
6 Please show these costs with and without major new additions to the transmission system.

7

8

9 A. Newfoundland and Labrador Hydro (“Hydro”) cannot provide capital spending amounts applied
10 for and spent on transmission systems by Hydro’s Island Interconnected customers and
11 Labrador Interconnected customers because it is not tracked or reported in this manner.

12 Summaries of capital asset costs in service¹ for Hydro’s Island Interconnected customers,
13 Labrador Interconnected Customers, and a combination of Island and Labrador Interconnected
14 customers for Hydro’s distribution systems for the past 20 years are provided in Table 1, Table 2,
15 and Table 3, respectively. Chart 1 to Chart 5 show these costs in both nominal and inflation-
16 adjusted terms for the same period with and without major new additions to the transmission
17 system.

¹ The costs are reported in the year that the assets went into service which can vary from the timing of capital spend. In addition, any subsequent retirements are excluded from the analysis.

Table 1: Capital Asset Costs – Transmission – Island Interconnected (\$ Nominal)

Year	Cost	Cost Excluding Major New Additions
2002	21,217,769.92	21,217,769.92
2003	13,588,183.71	13,588,183.71
2004	6,380,956.53	6,380,956.53
2005	3,896,775.68	3,896,775.68
2006	8,085,064.55	8,085,064.55
2007	7,029,297.72	7,029,297.72
2008	5,211,412.36	5,211,412.36
2009	9,998,013.45	9,998,013.45
2010	7,802,207.73	7,802,207.73
2011	11,016,154.54	11,016,154.54
2012	18,763,823.43	18,763,823.43
2013	8,959,768.53	8,959,768.53
2014	25,245,394.17	25,245,394.17
2015	28,044,916.11	28,044,916.11
2016	63,474,448.65	63,474,448.65
2017	309,710,658.94	66,080,004.23 ²
2018	69,554,947.21	69,554,947.21
2019	29,954,534.57	29,954,534.57
2020	31,188,942.39	31,188,942.39
2021	15,030,176.06	15,030,176.06
Total	694,153,446.25	450,522,791.54

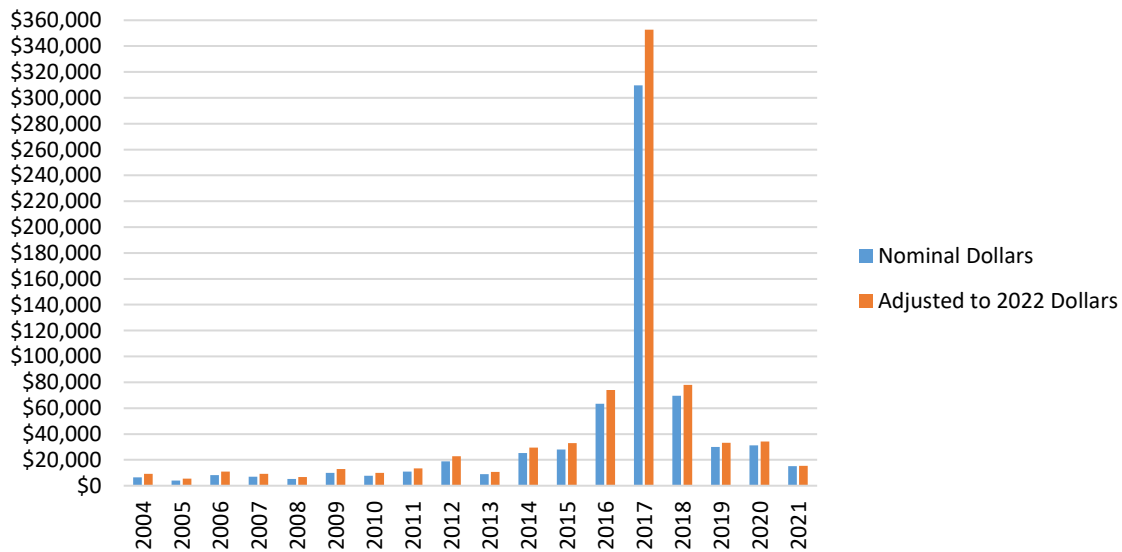


Chart 1: Capital Asset Costs – Transmission – Island Interconnected Customers (\$000)

² Major new additions in 2017 relate to the TL267 project.

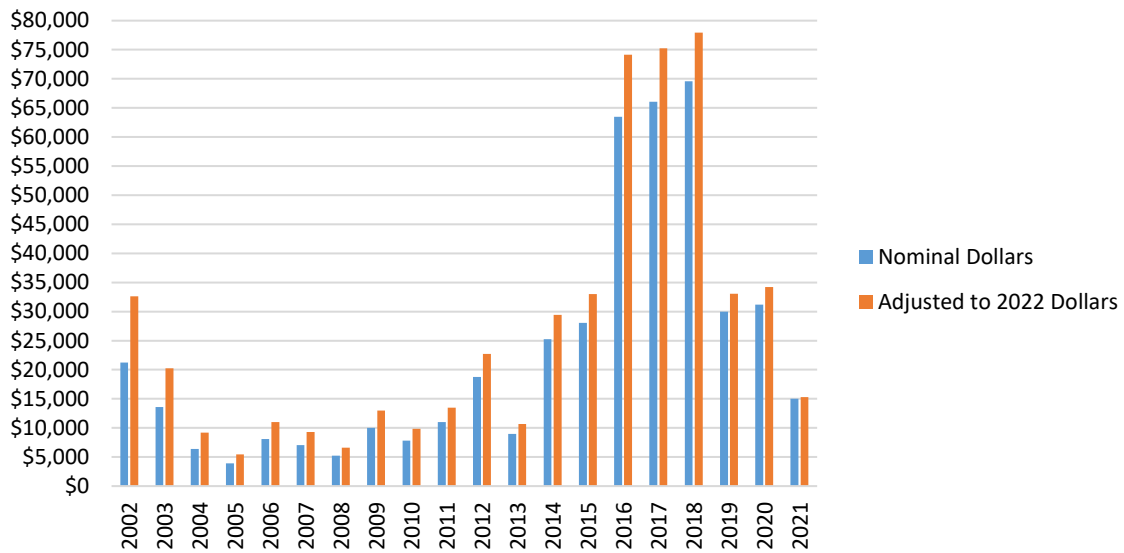


Chart 2: Capital Asset Costs – Transmission – Island Interconnected excluding Major Projects³ (\$000)

Table 2: Capital Asset Costs – Transmission – Labrador Interconnected (\$ Nominal)

Year	Cost	Cost Excluding Major New Additions
2004	934,325.93	934,325.93
2005	98,044.65	98,044.65
2006	176,554.78	176,554.78
2007	21,577.00	21,577.00
2008	103,625.40	103,625.40
2009	379,420.00	379,420.00
2010	170,171.15	170,171.15
2011	64,163.46	64,163.46
2012	7,952,795.73	7,952,795.73
2013	8,672,170.26	8,672,170.26
2014	407,350.89	407,350.89
2015	458,615.55	458,615.55
2016	3,605,436.88	3,605,436.88
2017	2,261,761.62	2,261,761.62
2018	6,001,177.68	6,001,177.68
2019	4,667,398.32	4,667,398.32
2020	7,967,022.75	7,967,022.75
2021	8,462,574.34	8,462,574.34
Total	52,404,186.39	52,404,186.39

³ Major new additions in 2017 relate to the TL267 project.

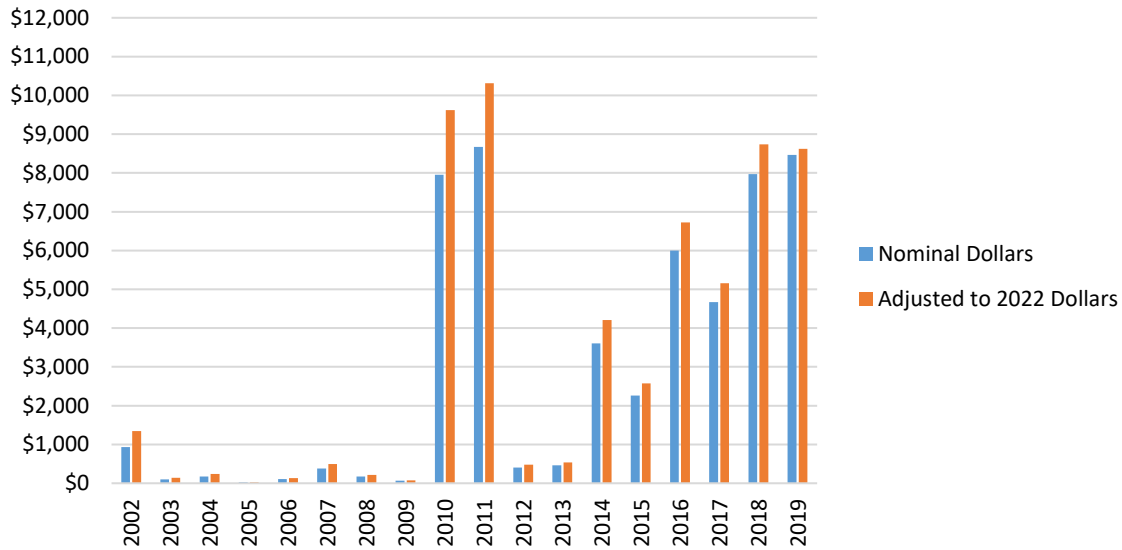


Chart 3: Capital Asset Costs – Transmission – Labrador Interconnected (\$'000)

Table 3: Capital Asset Costs – Transmission – Island and Labrador Interconnected (\$ Nominal)

Year	Cost	Cost Excluding Major New Additions
2004	21,217,769.92	1,217,769.92
2005	13,588,183.71	,588,183.71
2006	7,315,282.46	7,315,282.46
2007	3,994,820.33	3,994,820.33
2008	8,261,619.33	8,261,619.33
2009	7,050,874.72	7,050,874.72
2010	5,315,037.76	5,315,037.76
2011	10,377,433.45	10,377,433.45
2012	7,972,378.88	7,972,378.88
2013	11,080,318.00	11,080,318.00
2014	26,716,619.16	716,619.16
2015	17,631,938.79	17,631,938.79
2016	25,652,745.06	25,652,745.06
2017	28,503,531.66	28,503,531.66
2018	67,079,885.53	67,079,885.53
2019	311,972,420.56	68,341,765.85 ⁴
2020	75,556,124.89	75,556,124.89
2021	34,621,932.89	34,621,932.89
Total	746,557,632.64	502,926,977.93

⁴ Major new additions in 2017 relate to the TL267 project.

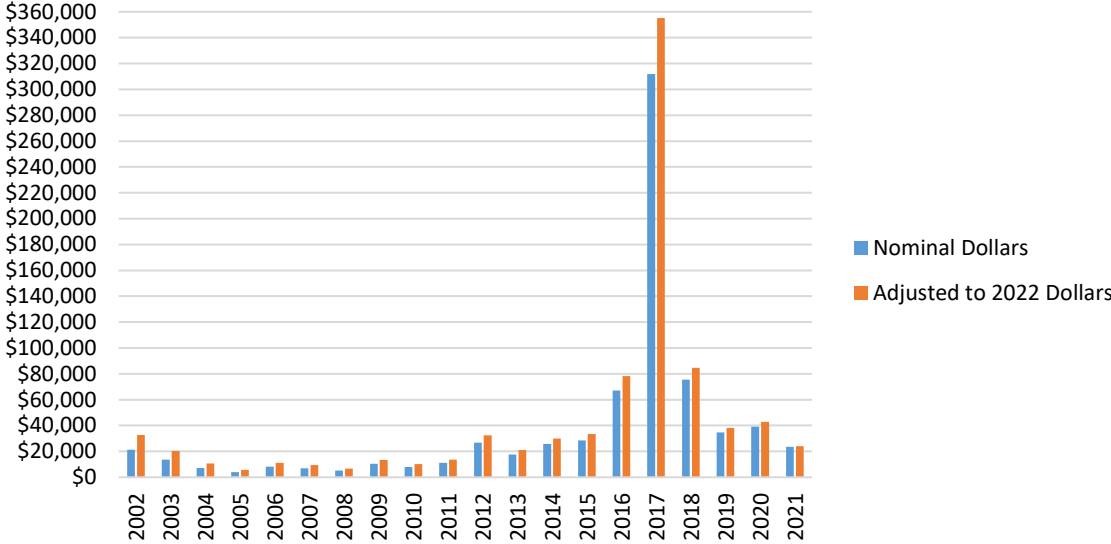


Chart 4: Capital Asset Costs – Transmission – Island and Labrador Interconnected (\$000)

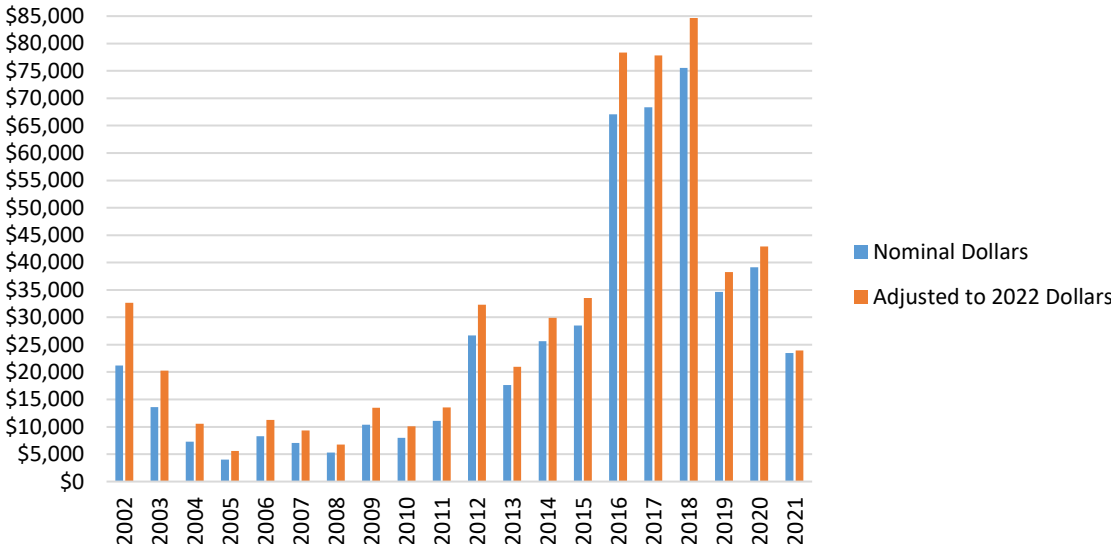


Chart 5: Capital Asset Costs – Transmission Island and Labrador Interconnected Excluding Major Projects⁵ (\$000)

⁵ Major new additions in 2017 relate to the TL 267 project.