

1 Q. **Reference: Application, 2023 Capital Budget Overview, Chart 20**

2 Does the chart show all-in average rates for all end-use customers? Please show the chart with
 3 rates for only residential customers on the Island system, both all-in and energy charge only.
 4 What are the all-in and energy rates for residential customers on the Island system in 2022?

5
 6
 7 A. Chart 20 in the 2023 Capital Budget Overview¹ shows the average annual wholesale rate
 8 charged to Newfoundland Power and the end-use rate charged to domestic customers on the
 9 Labrador Interconnected System.

10 The energy only² and the average rates (all-in)³ for residential customers on the Island
 11 Interconnected System are presented in Chart 1.

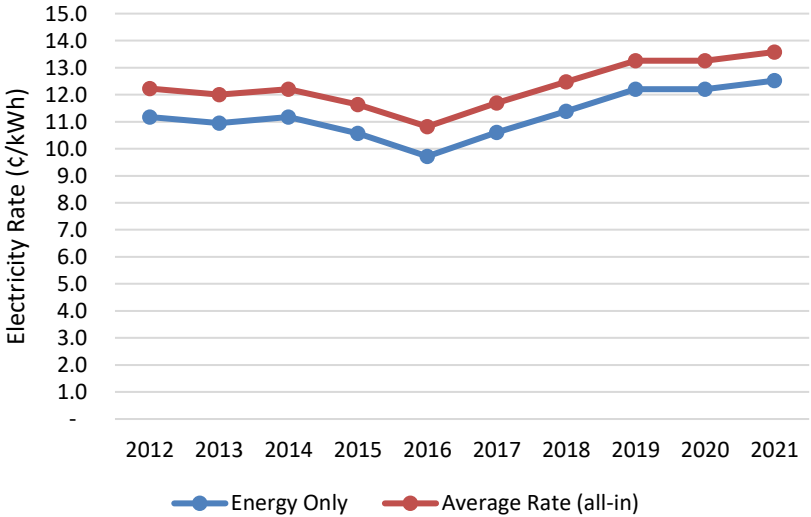


Chart 1: Energy Only and Average Rates (all-in) for Residential Customers on the Island Interconnected System

12 As of July 31, 2022, the energy rate for residential customers on the Island Interconnected
 13 System is 12.346 cents/kWh and the all-in rate is 13.4 cents/kWh.²

¹ "2023 Capital Budget Application," Newfoundland and Labrador Hydro, July 13, 2022, vol. I, sch. 1, s. 6.9, p. 33, chart 20.
² Energy rate in effect at the end of the year.
³ Based on monthly consumption of 1,264 kWh.