

- 1 **Q. In order to provide a record copy of document(s) already provided informally,**
2 **please provide the organization charts for each of the groups responsible for**
3 **handling customer inquiries and customer outage reports.**
4
- 5 A. Please refer to the response to Request for Information PUB-NP-094, Attachment A:
6 Newfoundland Power Organization Chart – Customer Inquiries and Customer Outages.
7 The positions with responsibility for handling customer inquiries and customer outage
8 reports are represented in green.

**Newfoundland Power Organization Chart
Customer Inquiries and Customer Outages**

NEWFOUNDLAND POWER

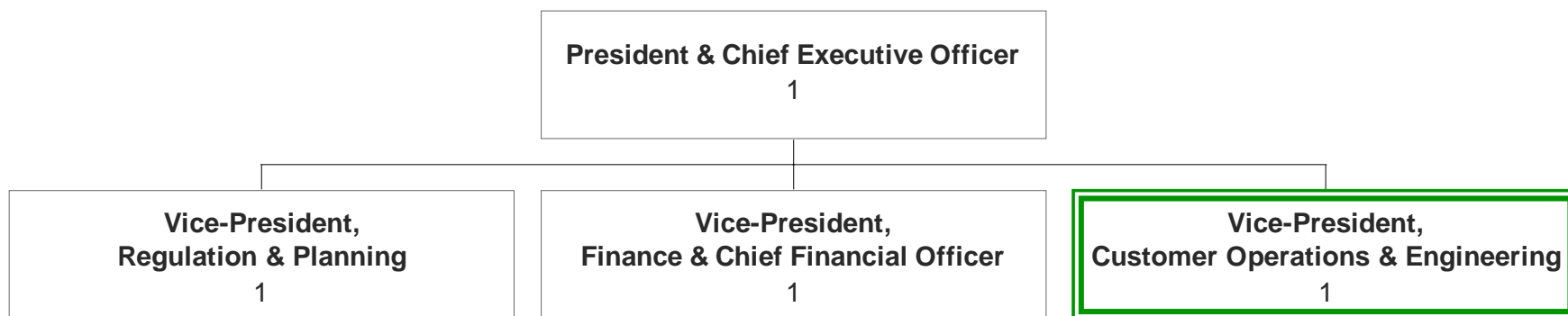
ORGANIZATION CHART

February 21, 2014



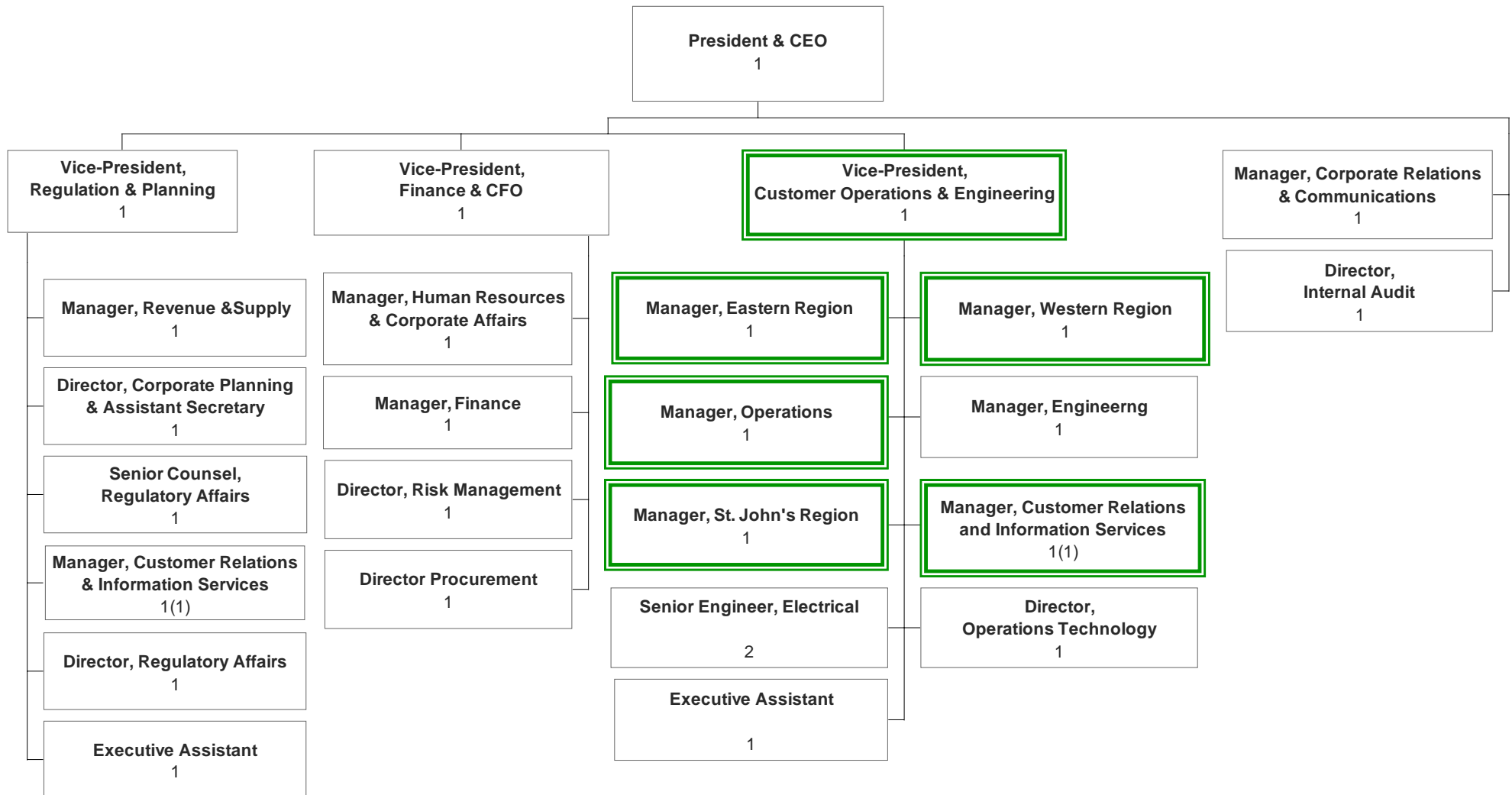
NEWFOUNDLAND POWER INC.

EXECUTIVE GROUP



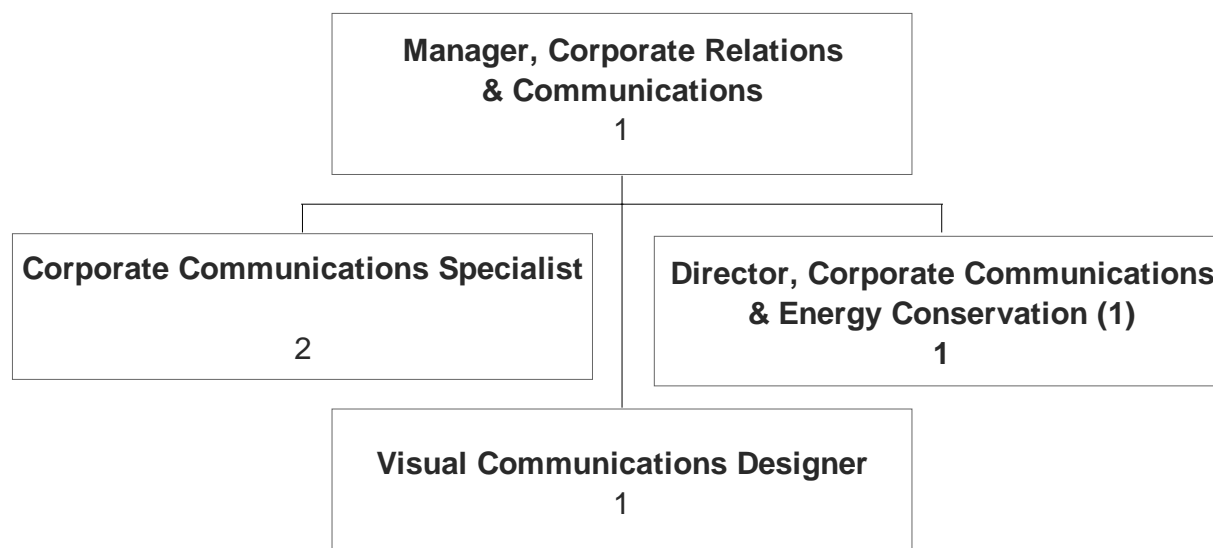
NEWFOUNDLAND POWER INC.

CORPORATE ORGANIZATION



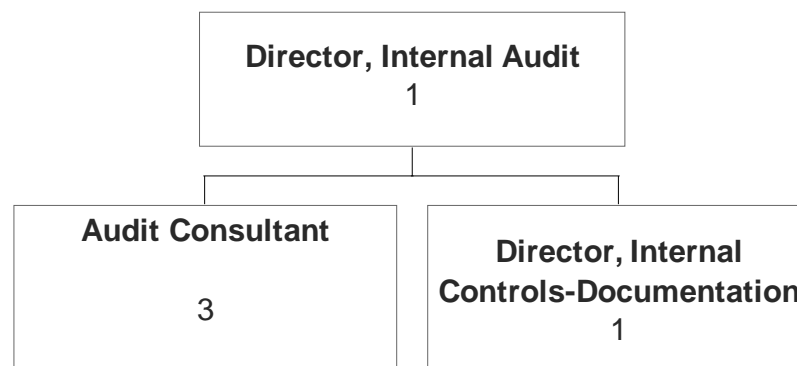
NEWFOUNDLAND POWER INC.

CORPORATE RELATIONS & COMMUNICATIONS



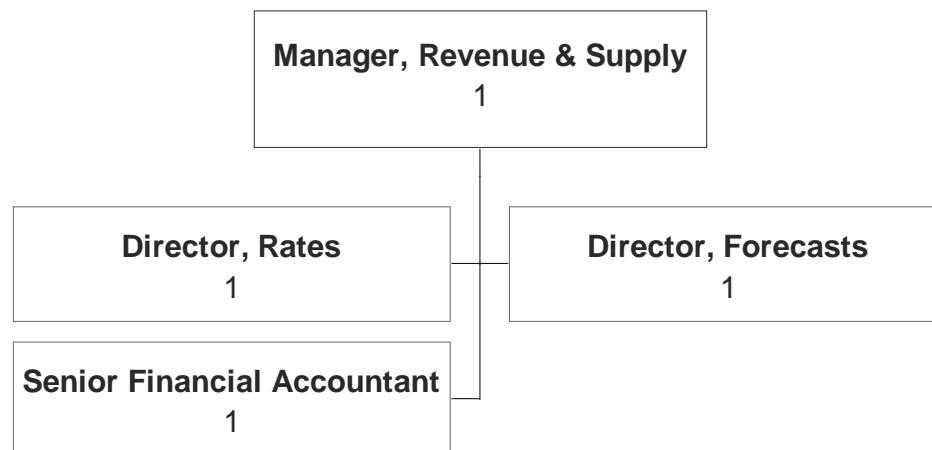
NEWFOUNDLAND POWER INC.

INTERNAL AUDIT



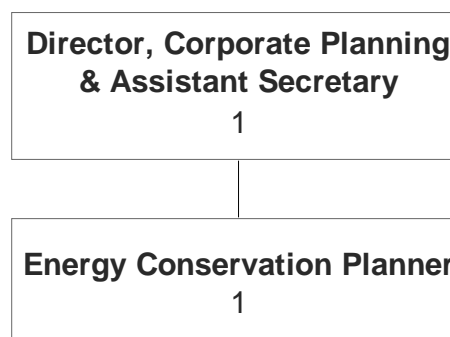
NEWFOUNDLAND POWER INC.

RATES & REGULATION



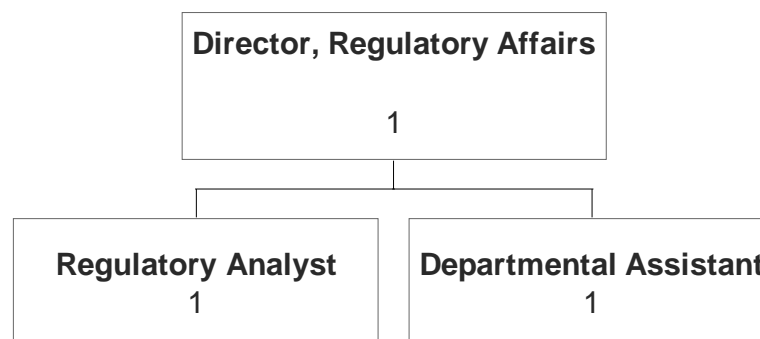
NEWFOUNDLAND POWER INC.

REGULATION & PLANNING



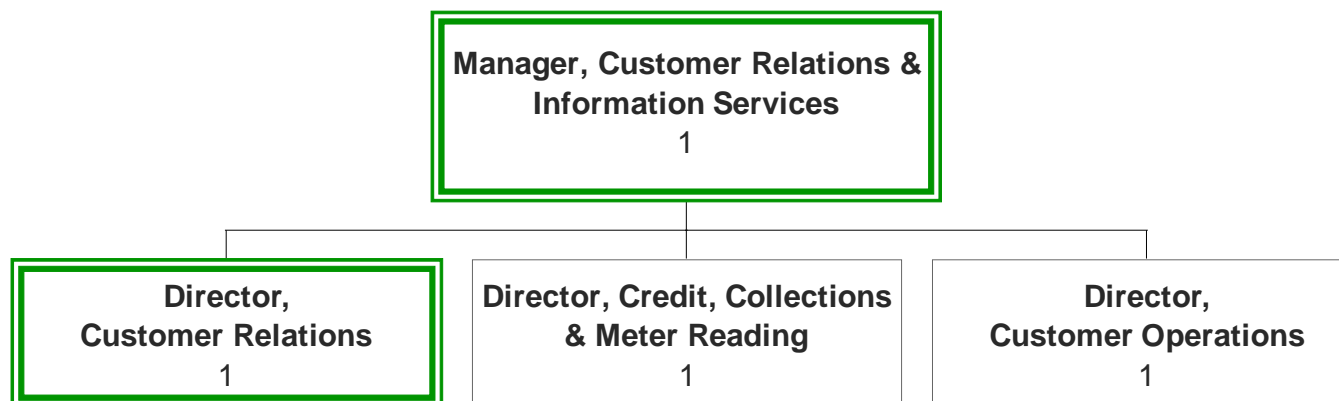
NEWFOUNDLAND POWER INC.

REGULATION & PLANNING



NEWFOUNDLAND POWER INC.

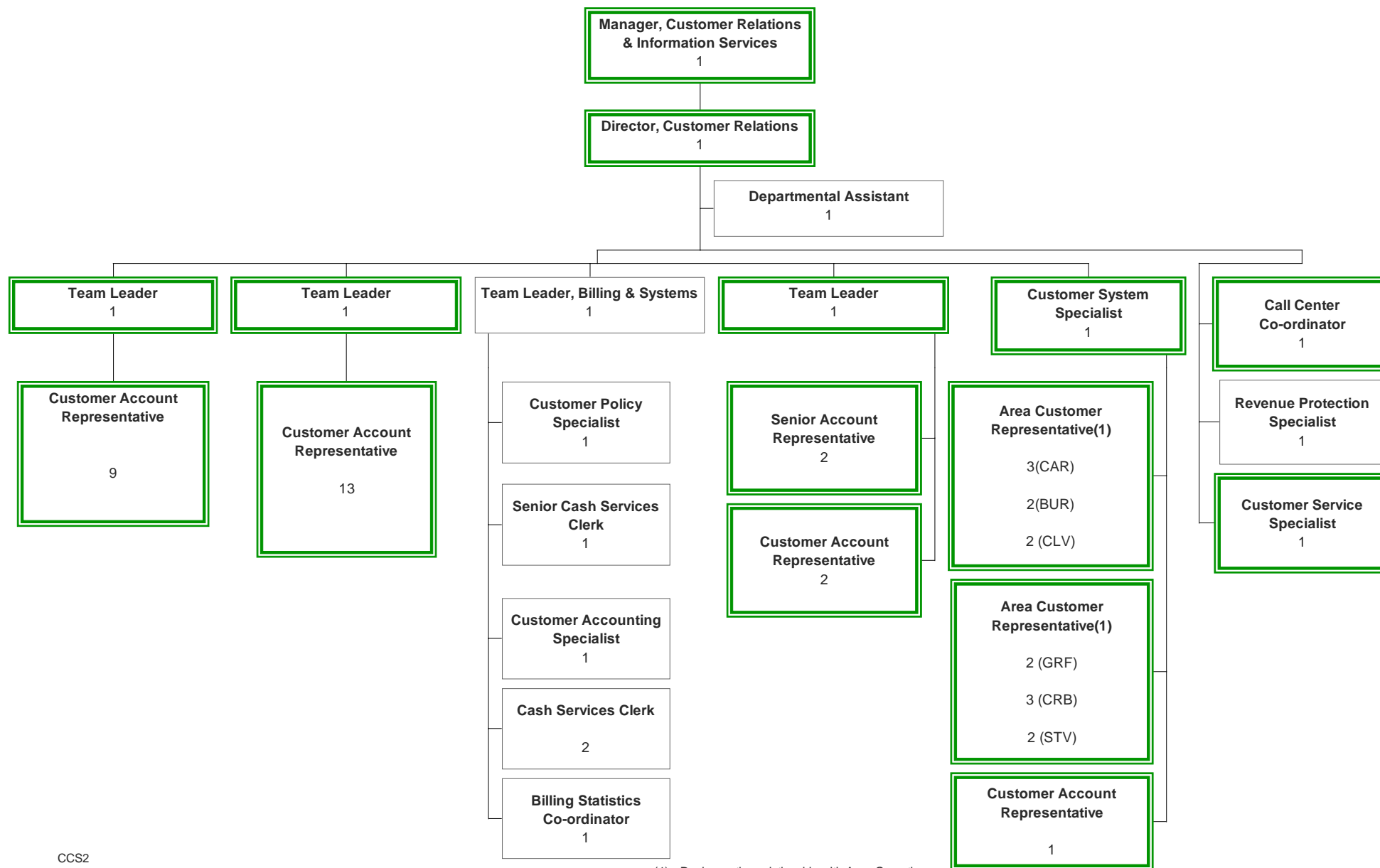
CUSTOMER RELATIONS (Page 1 of 3)



NEWFOUNDLAND POWER INC.

CUSTOMER RELATIONS Page 2 of 3

PUB-NP-094, Attachment A
Page 10 of 43

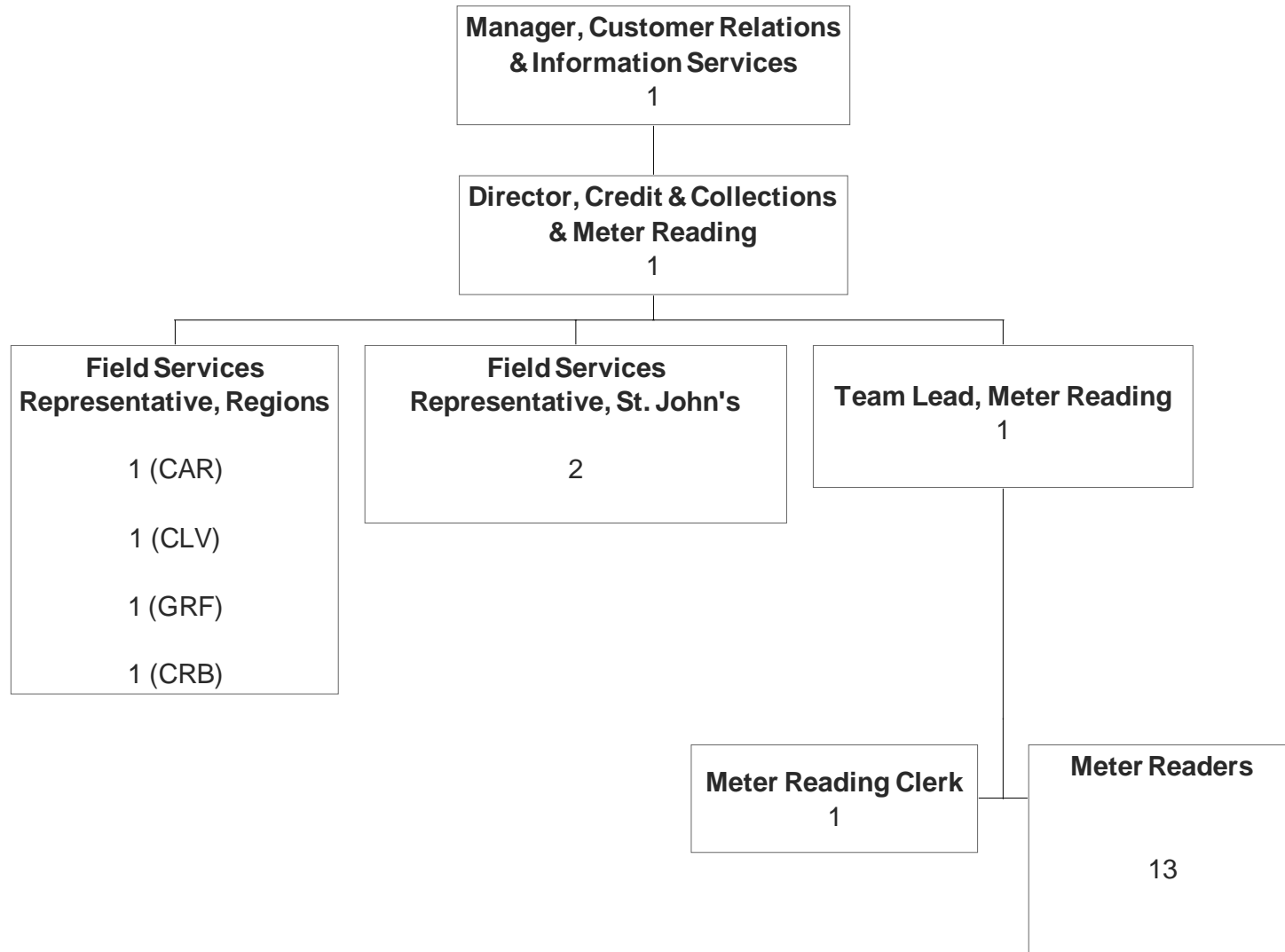


CCS2

(1) Dual reporting relationship with Area Operations.

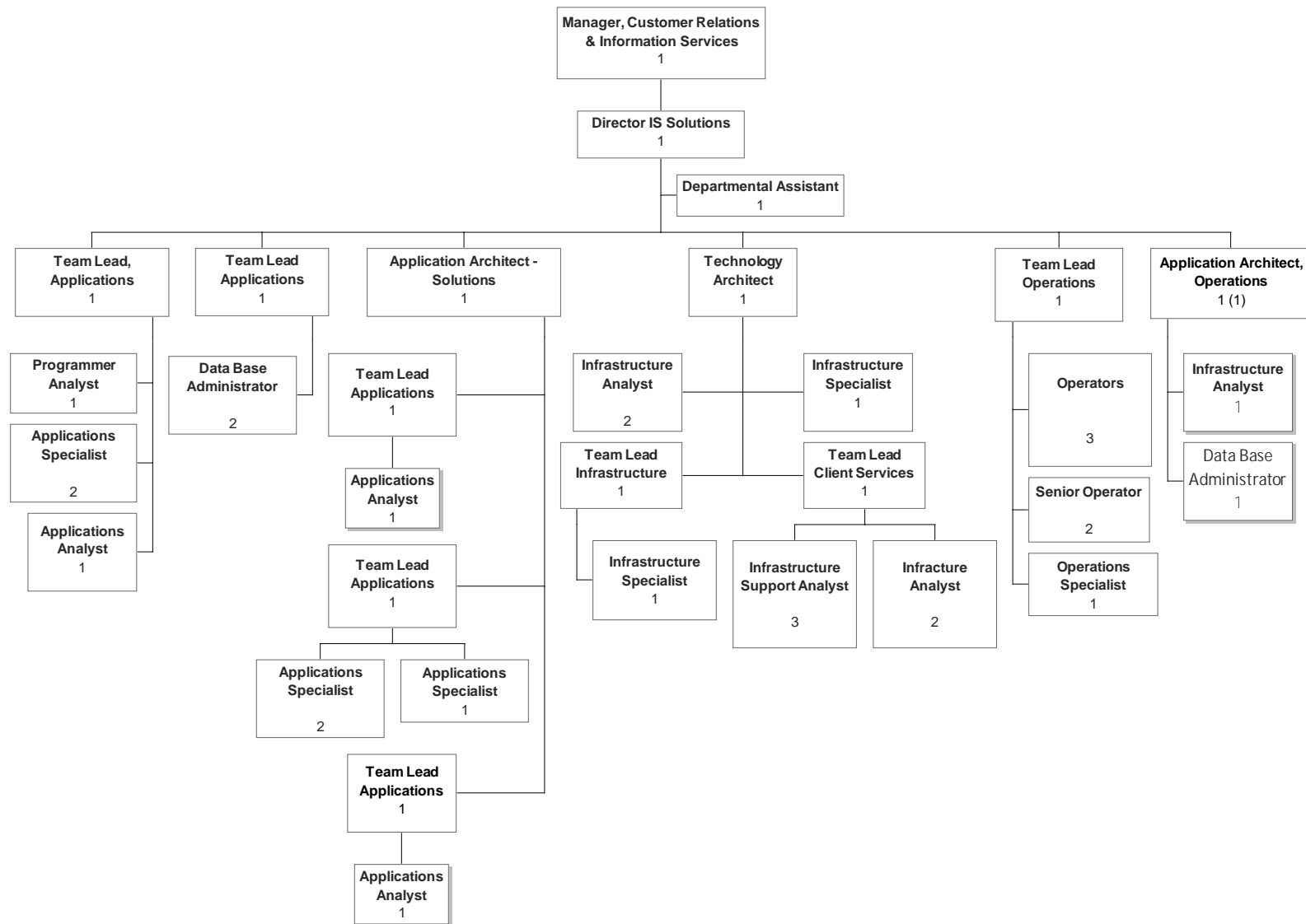
NEWFOUNDLAND POWER INC.

CUSTOMER RELATIONS (Page 3 of 3)



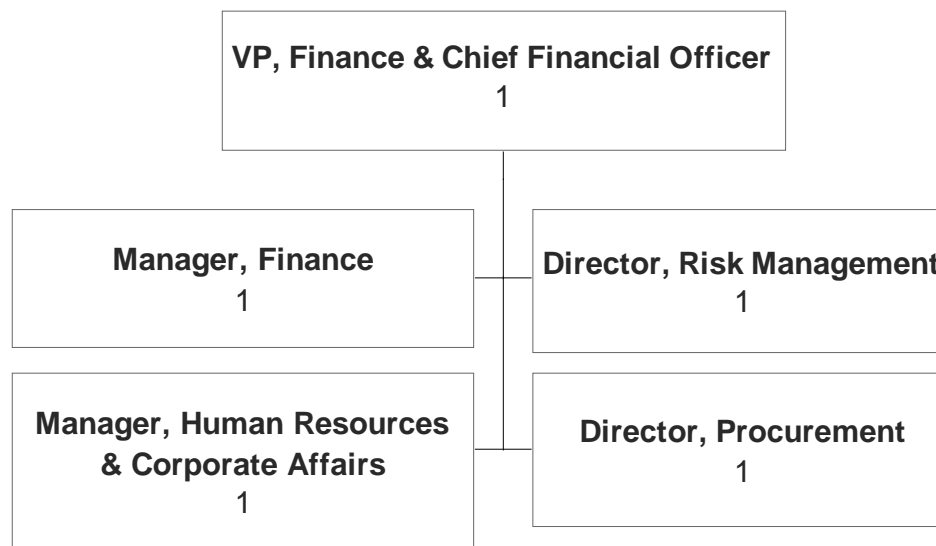
NEWFOUNDLAND POWER INC.

INFORMATION SERVICES



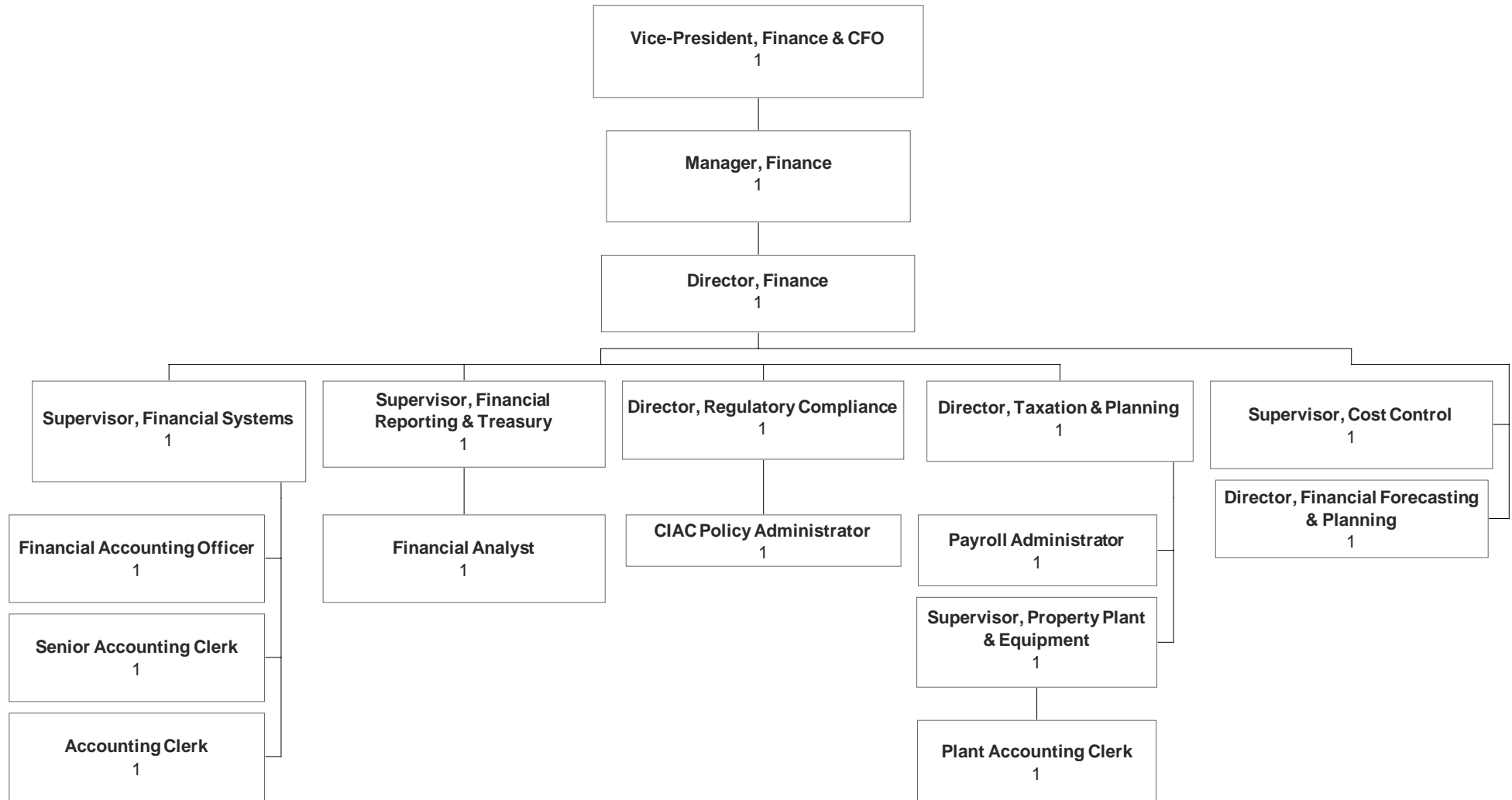
NEWFOUNDLAND POWER INC.

FINANCE



NEWFOUNDLAND POWER INC.

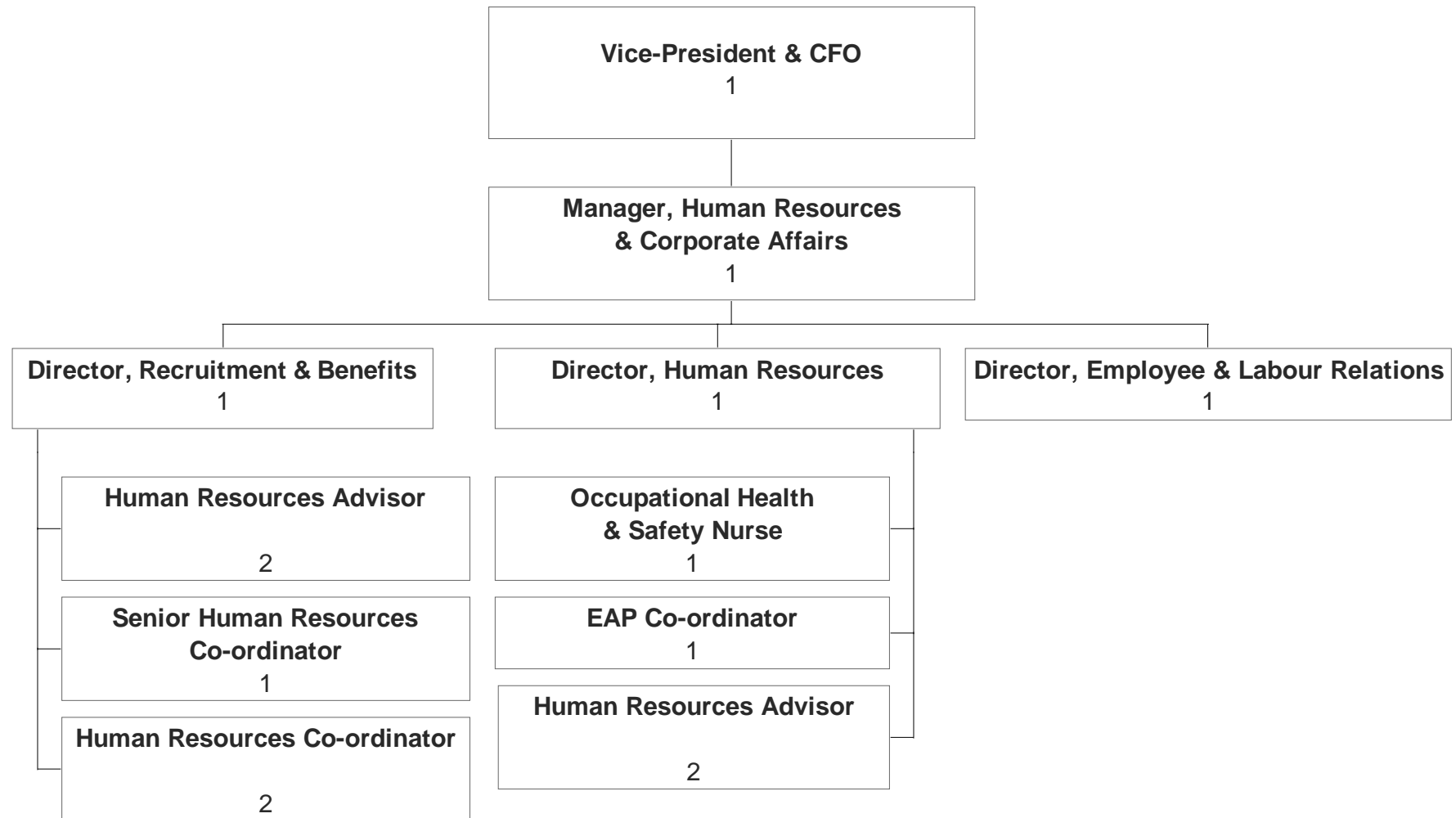
FINANCE DEPARTMENT



NEWFOUNDLAND POWER INC.

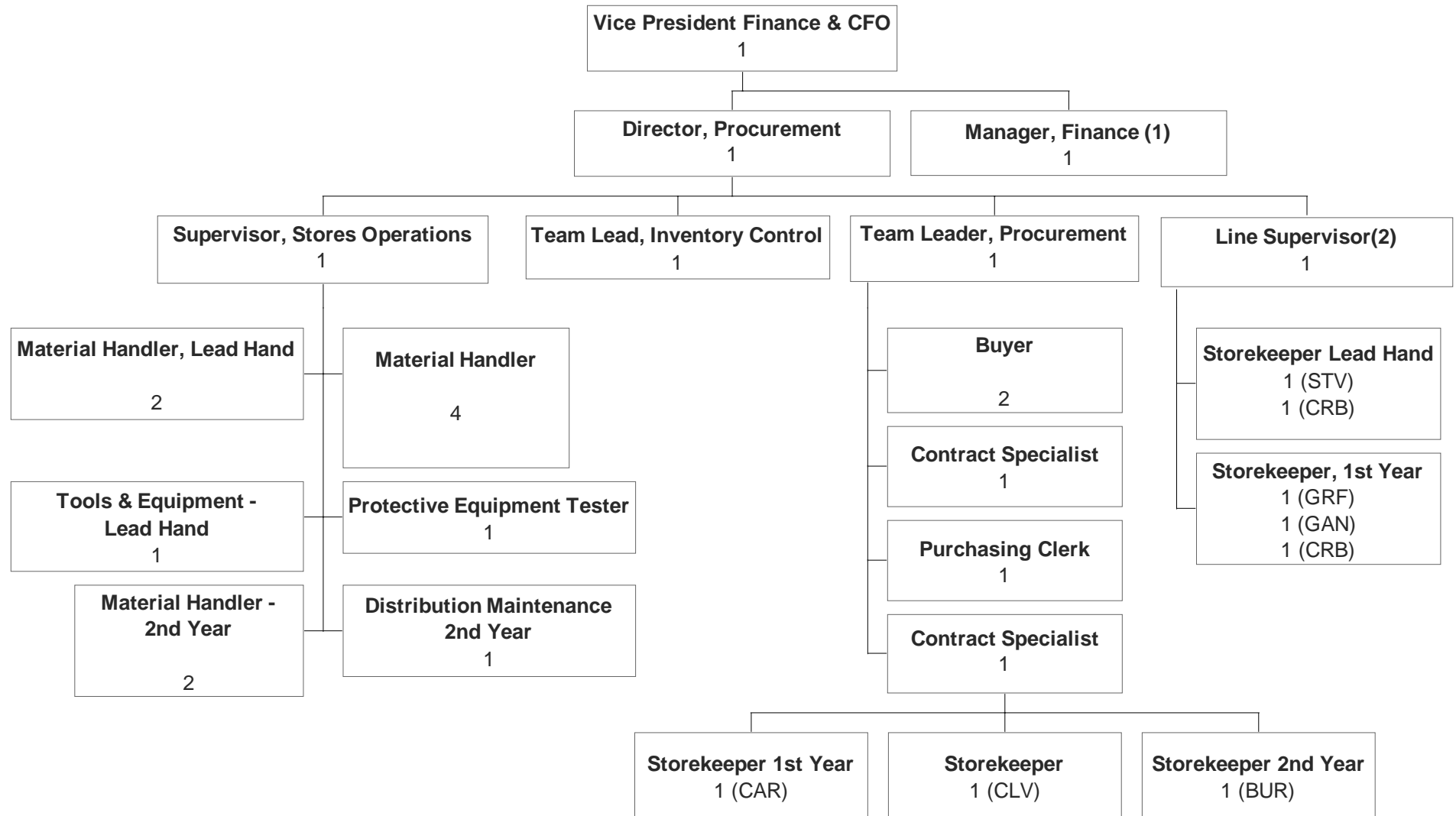
HUMAN RESOURCES

PUB-NP-094, Attachment A
Page 15 of 43



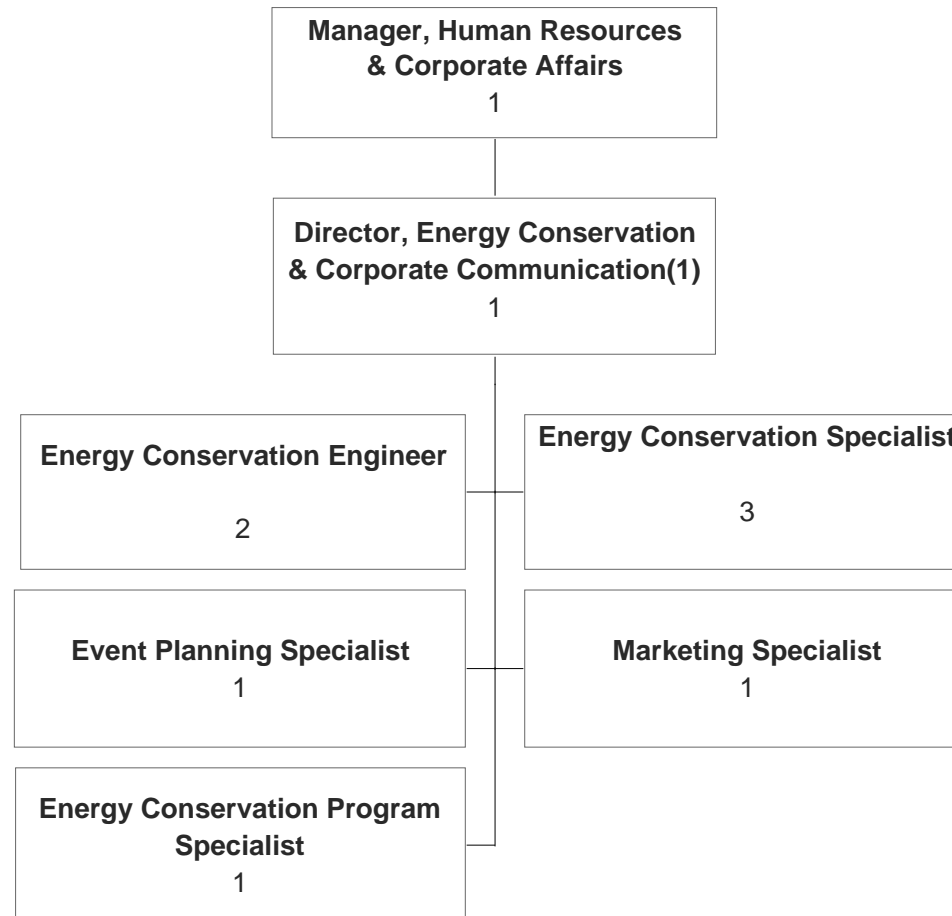
NEWFOUNDLAND POWER INC.

MATERIALS MANAGEMENT & CENTRAL STORES



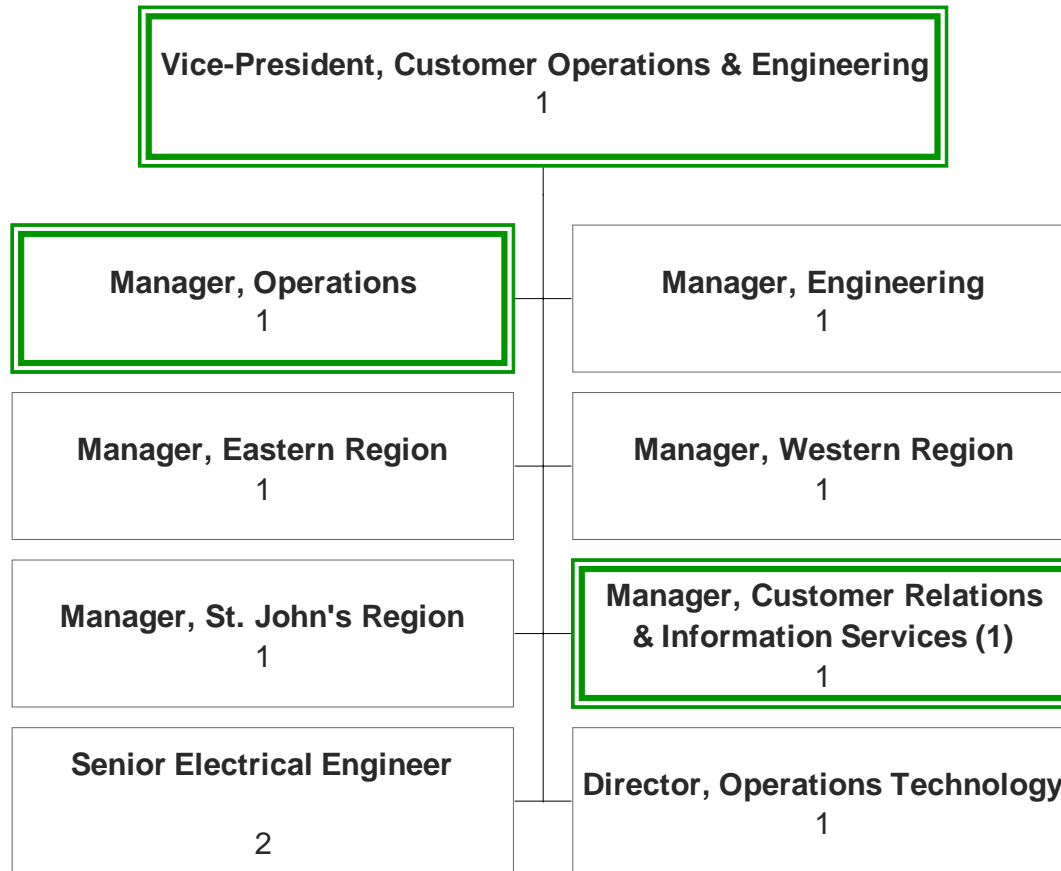
NEWFOUNDLAND POWER INC.

ENERGY CONSERVATION



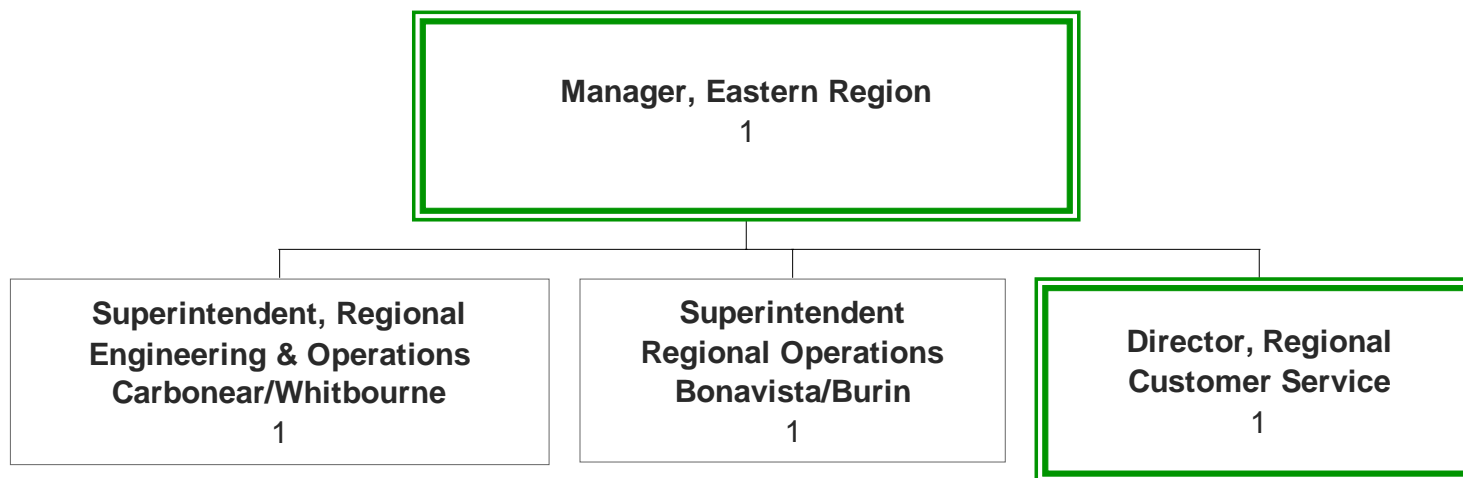
NEWFOUNDLAND POWER INC.

ENGINEERING & OPERATIONS



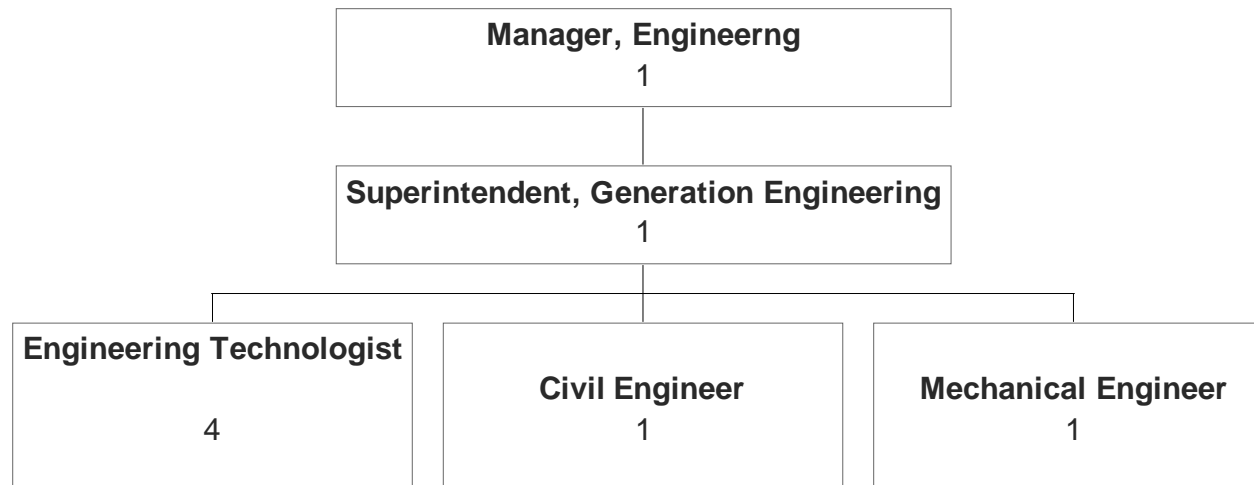
NEWFOUNDLAND POWER INC. ENGINEERING & OPERATIONS

EASTERN REGION



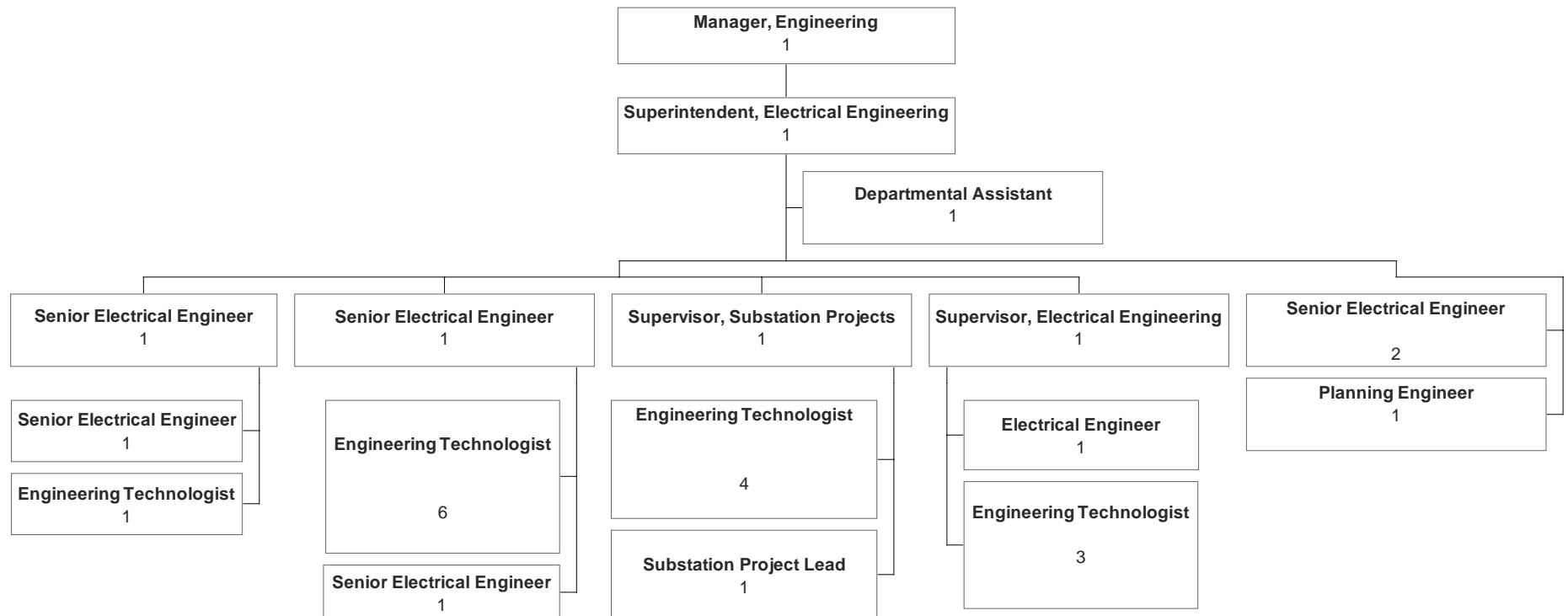
NEWFOUNDLAND POWER INC.

ENGINEERING (Page 2 of 4)



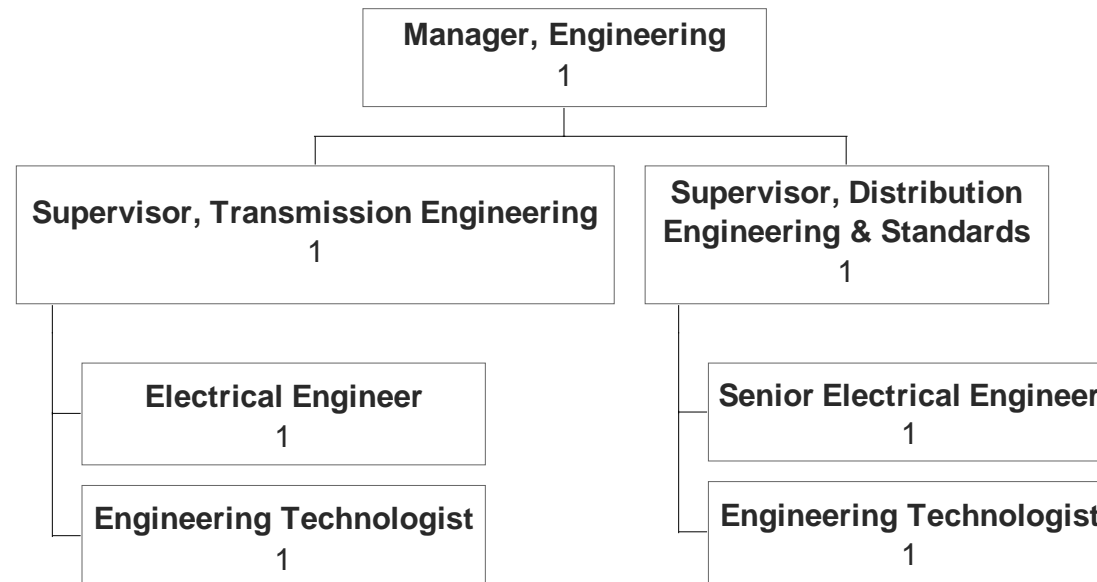
NEWFOUNDLAND POWER INC.

ENGINEERING (Page 3 of 4)



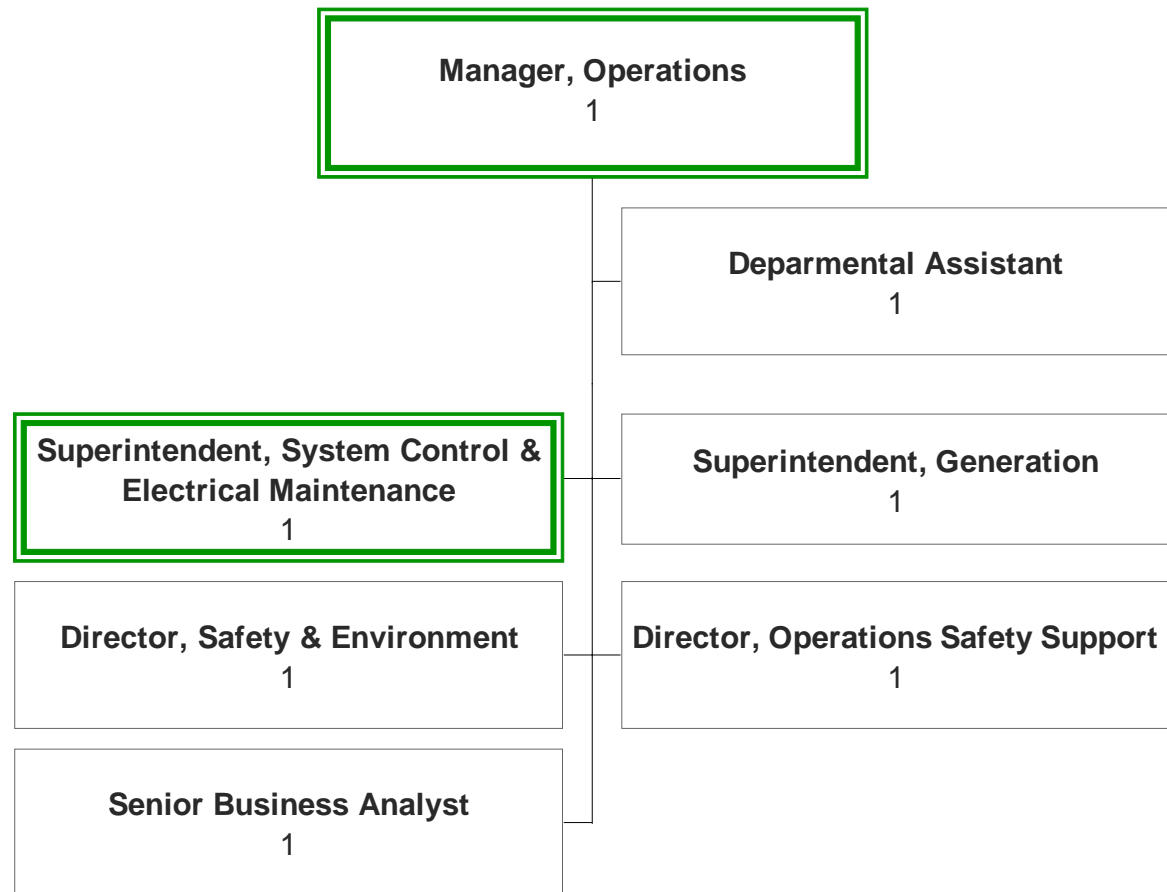
NEWFOUNDLAND POWER INC.

ENGINEERING (Page 4 of 4)

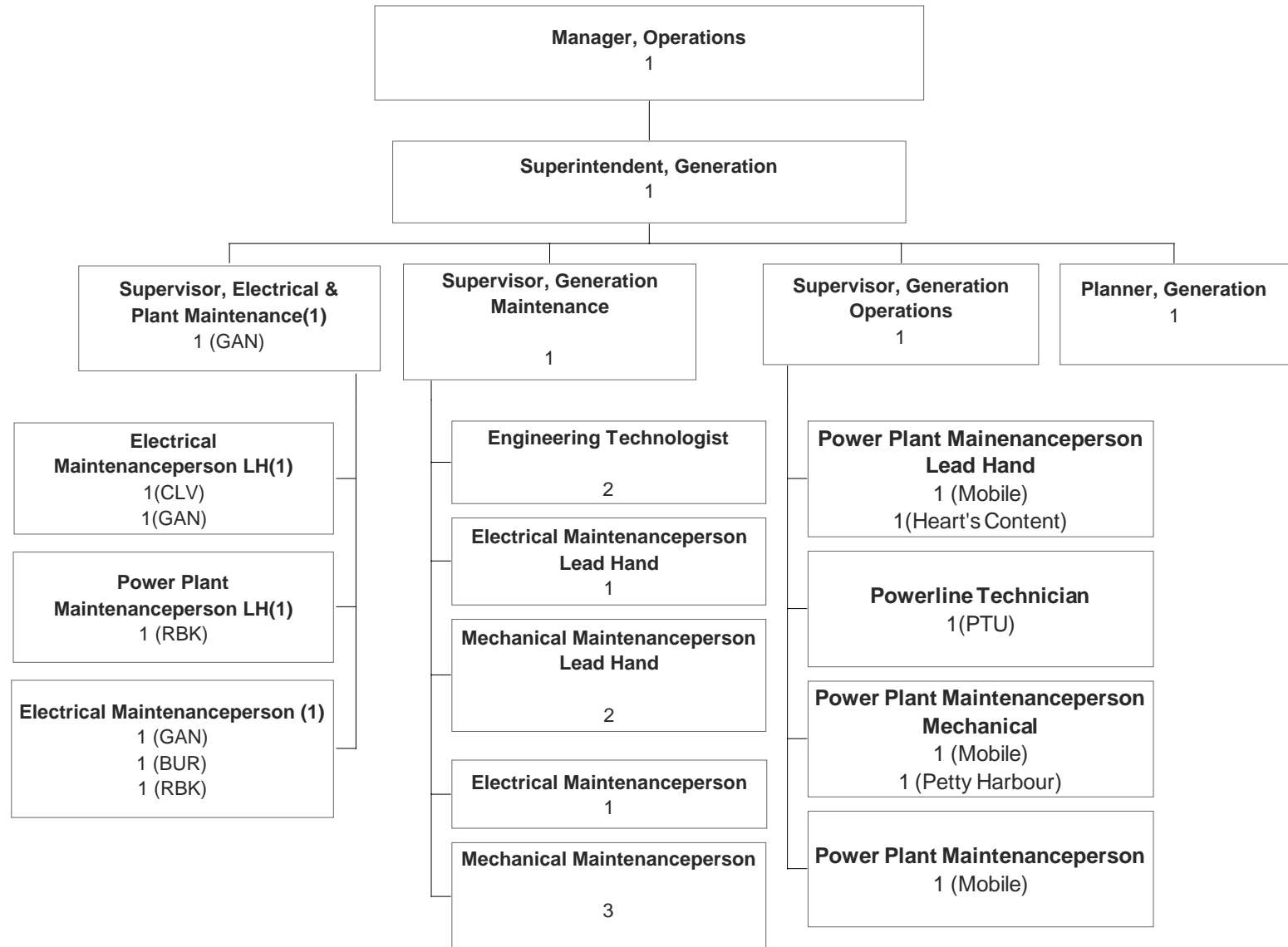


NEWFOUNDLAND POWER INC.

OPERATIONS (Page 1 of 5)



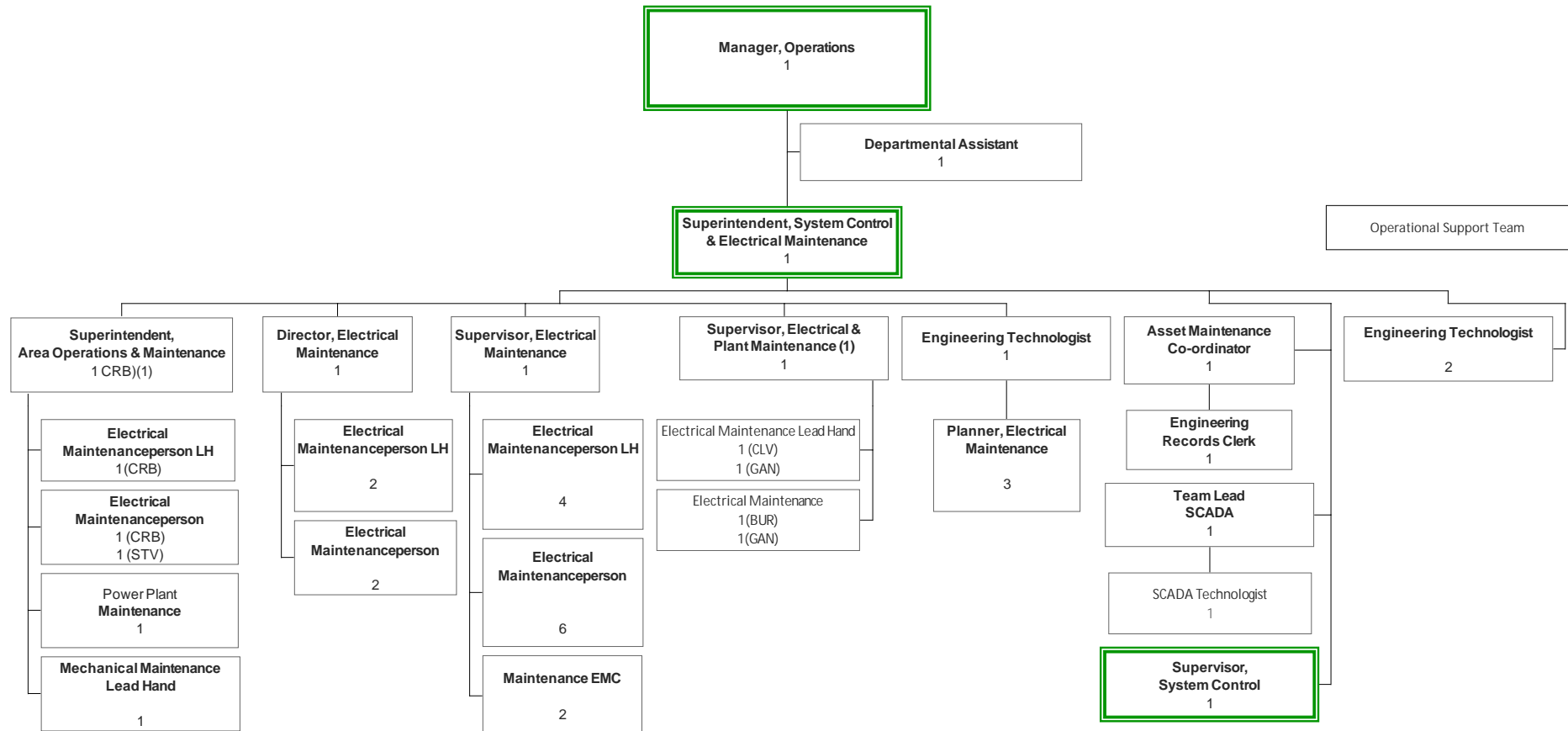
NEWFOUNDLAND POWER INC. OPERATIONS (Page 2 of 5)



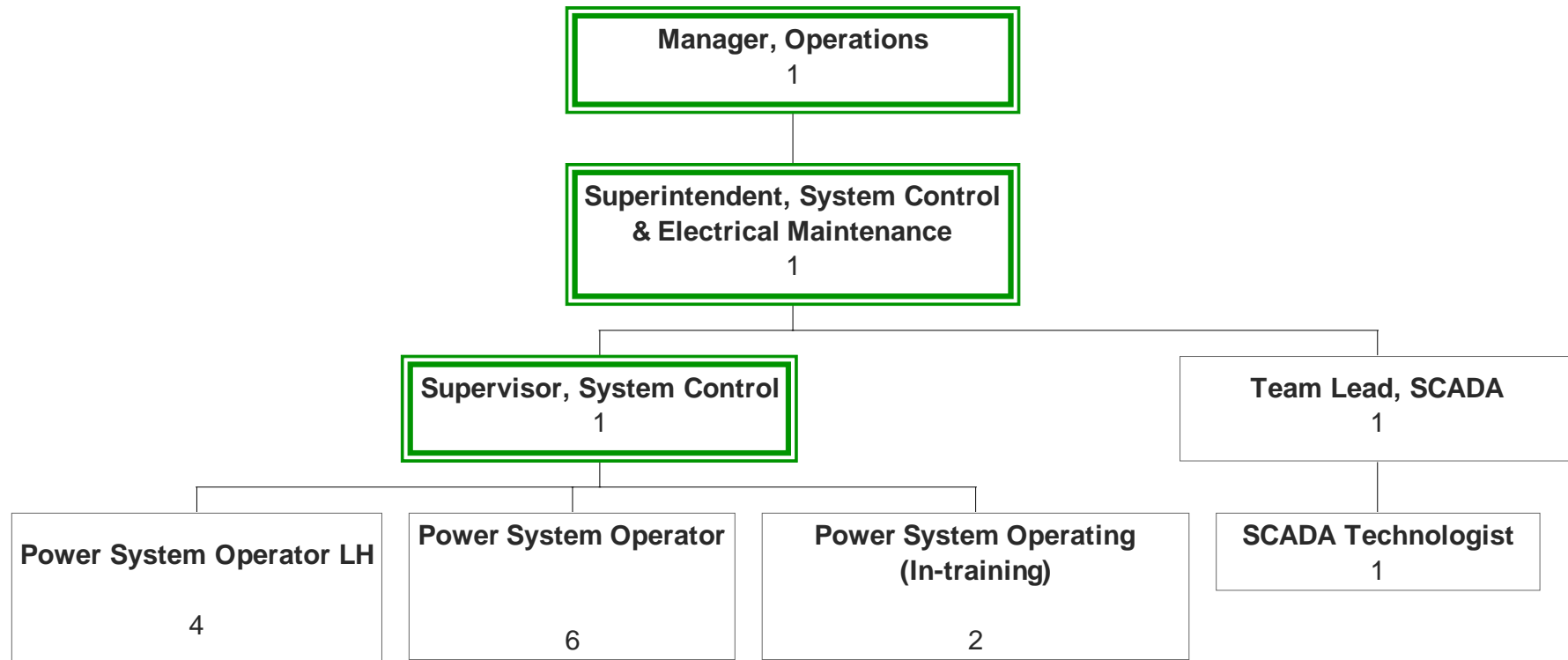
(1) Dual reporting relationship with Regions.

NEWFOUNDLAND POWER INC.

OPERATIONS (Page 3 of 5)

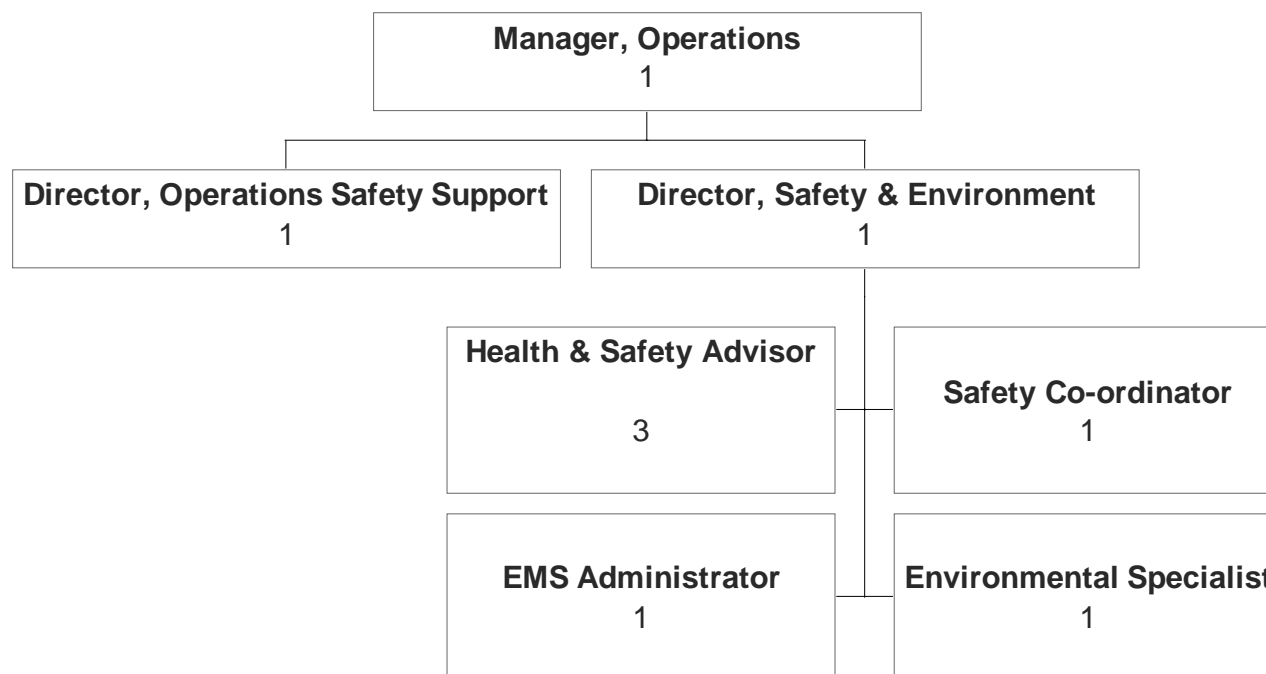


NEWFOUNDLAND POWER INC. OPERATIONS (Page 4 of 5)



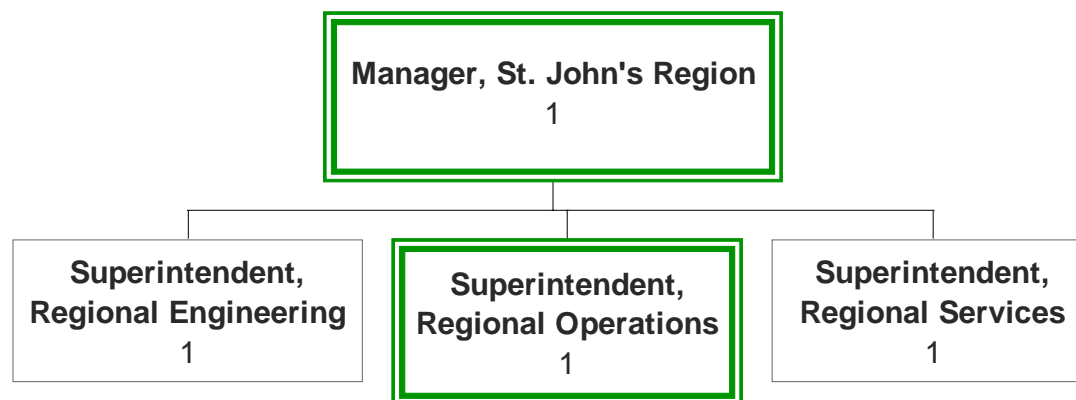
NEWFOUNDLAND POWER INC. OPERATIONS (Page 5 of 5)

Health, Safety & Environment



NEWFOUNDLAND POWER INC. ENGINEERING & OPERATIONS

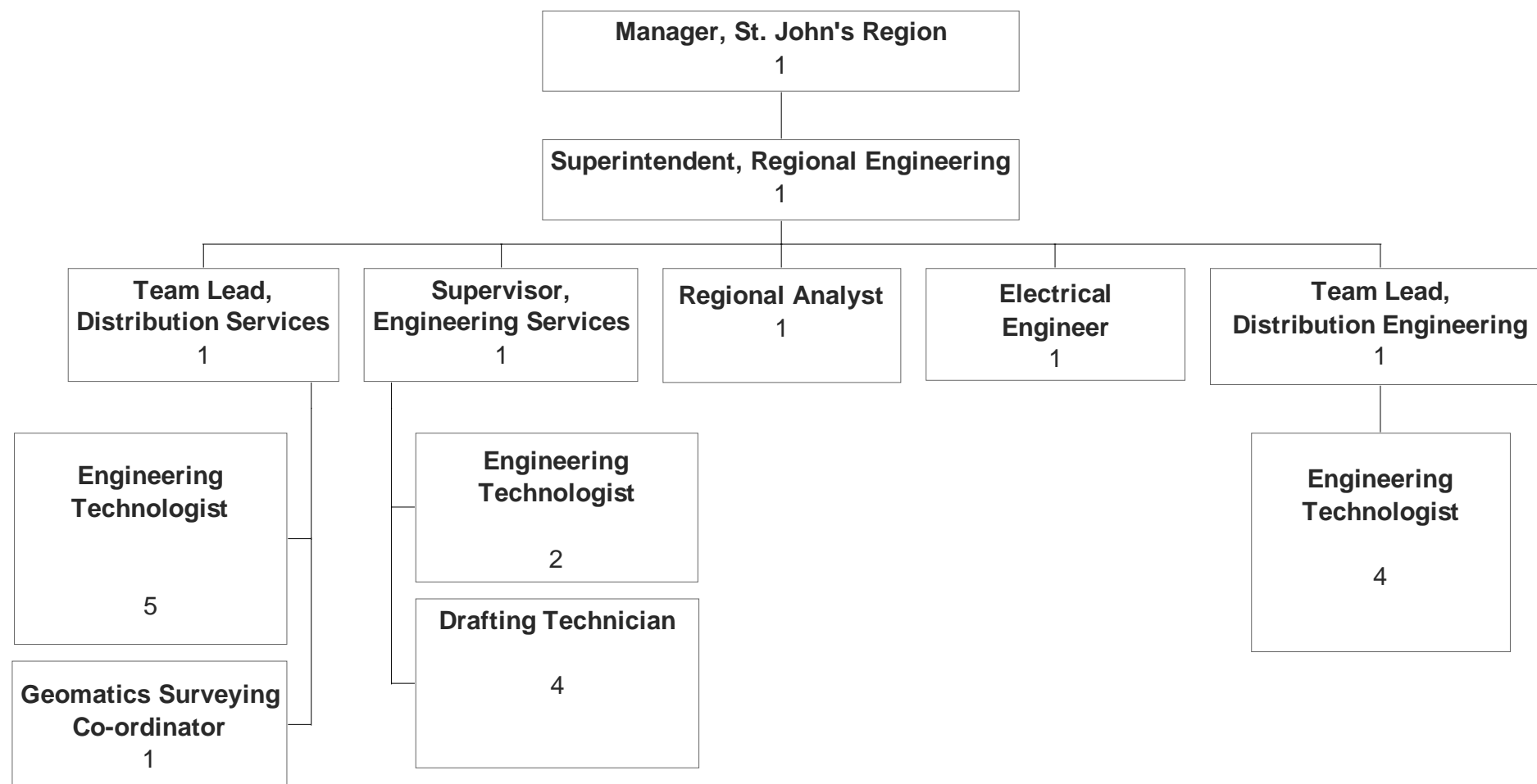
ST. JOHN'S REGION



NEWFOUNDLAND POWER INC. ENGINEERING & OPERATIONS

PUB-NP-094, Attachment A
Page 29 of 43

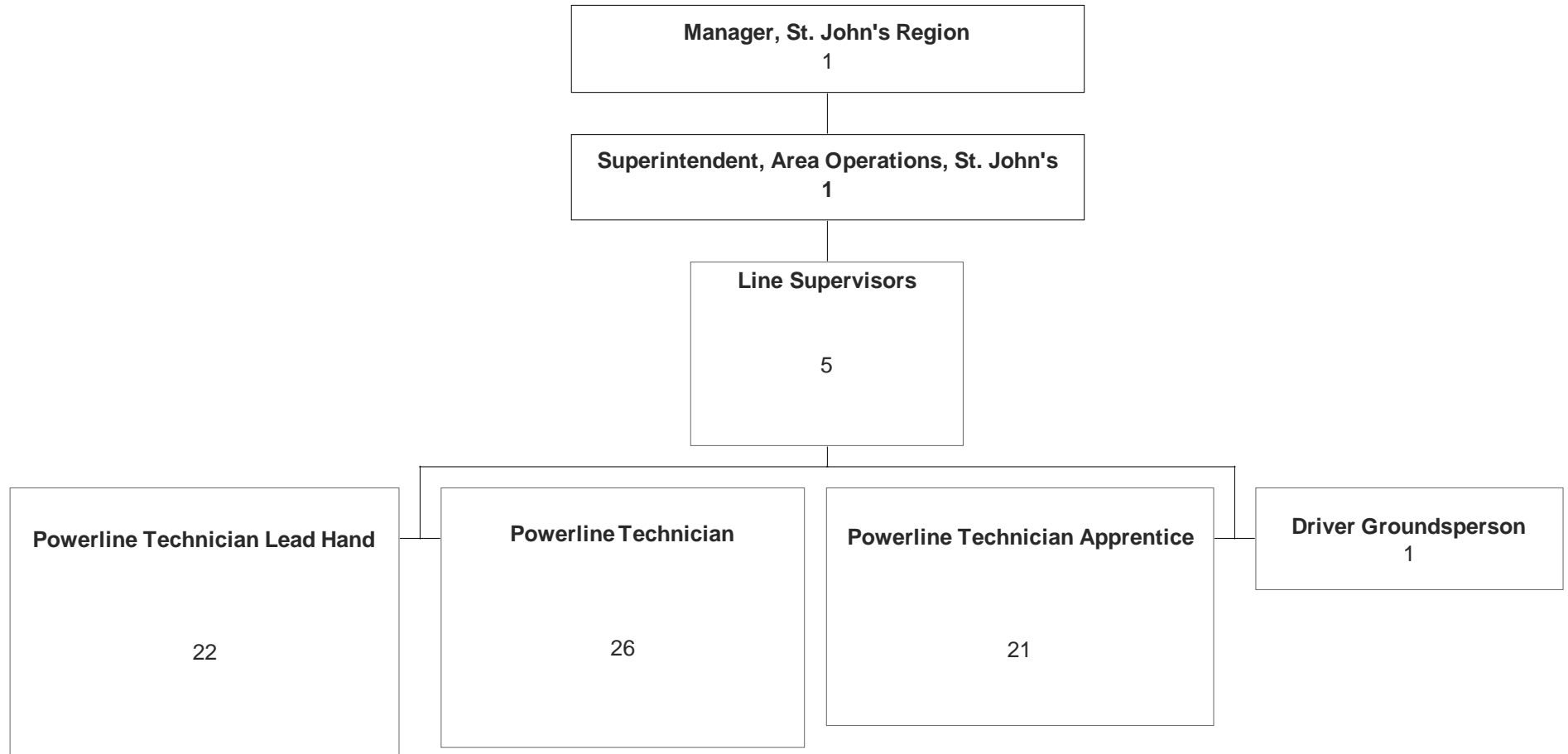
ST. JOHN'S REGIONAL ENGINEERING



NEWFOUNDLAND POWER INC. ENGINEERING & OPERATIONS

PUB-NP-094, Attachment A
Page 30 of 43

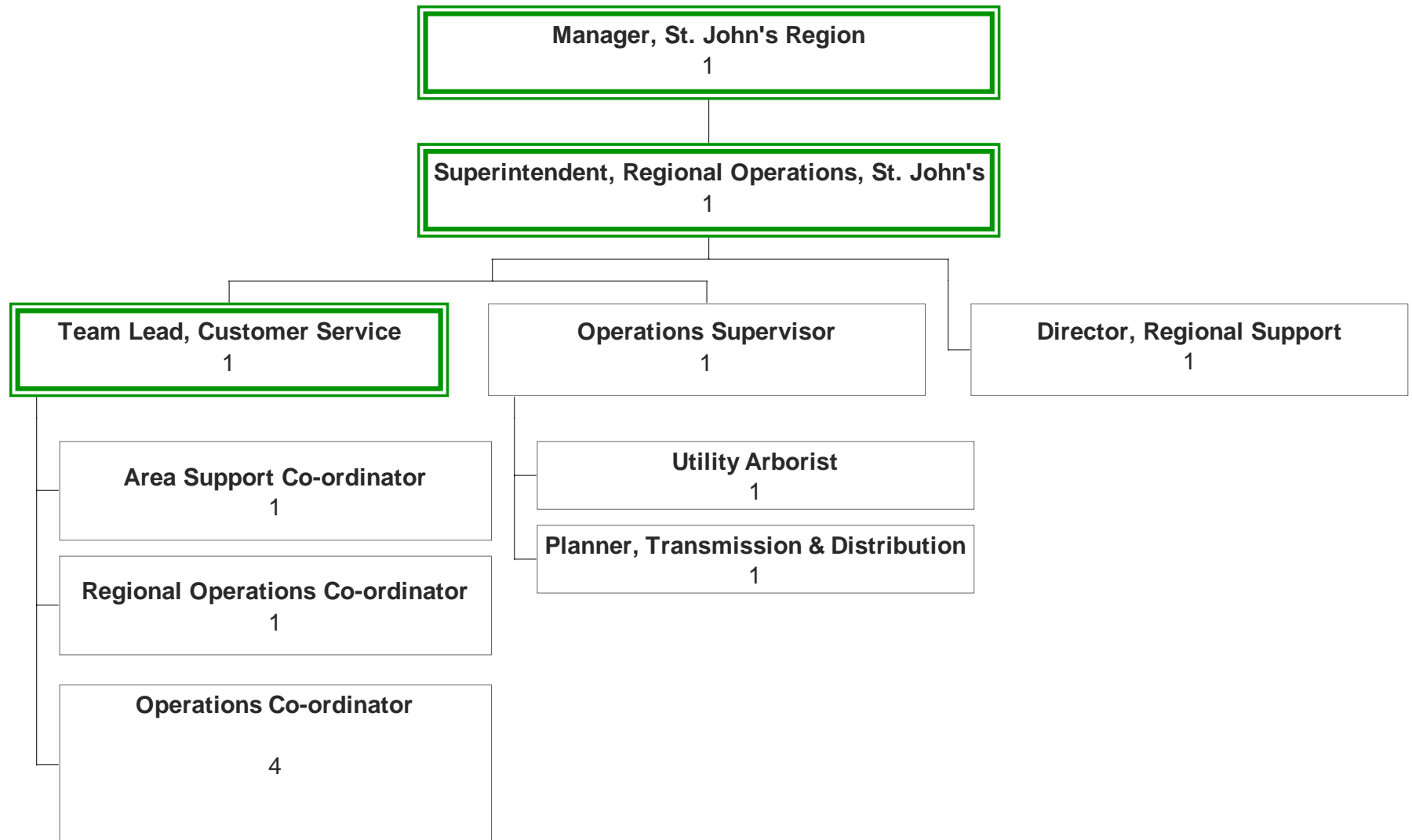
ST. JOHN'S AREA OPERATIONS (Page 1 of 2)



NEWFOUNDLAND POWER INC. ENGINEERING & OPERATIONS

PUB-NP-094, Attachment A
Page 31 of 43

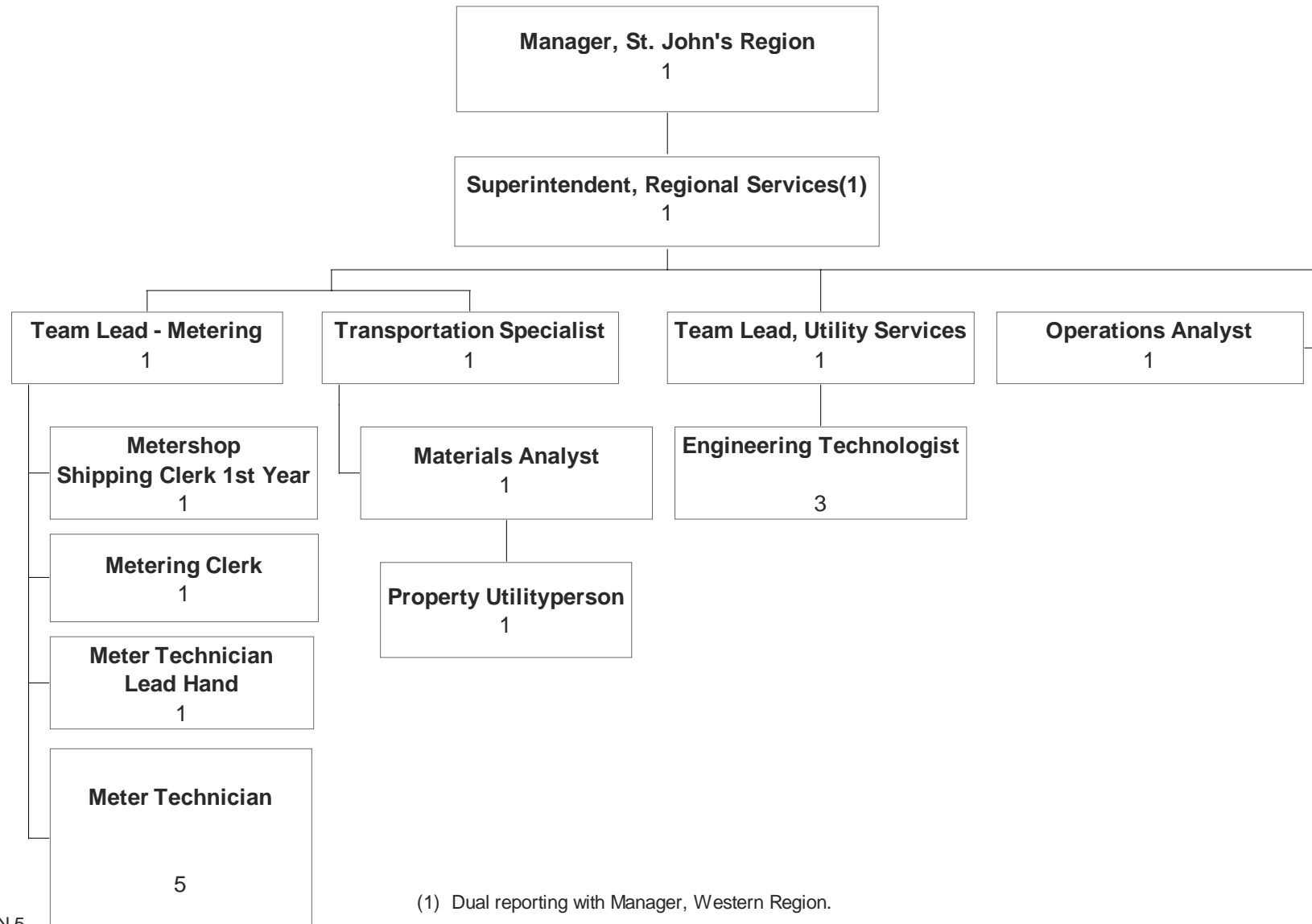
ST. JOHN'S REGIONAL OPERATIONS (Page 2 OF 2)



NEWFOUNDLAND POWER INC. ENGINEERING & OPERATIONS

PUB-NP-094, Attachment A
Page 32 of 43

ST. JOHN'S REGIONAL SERVICES

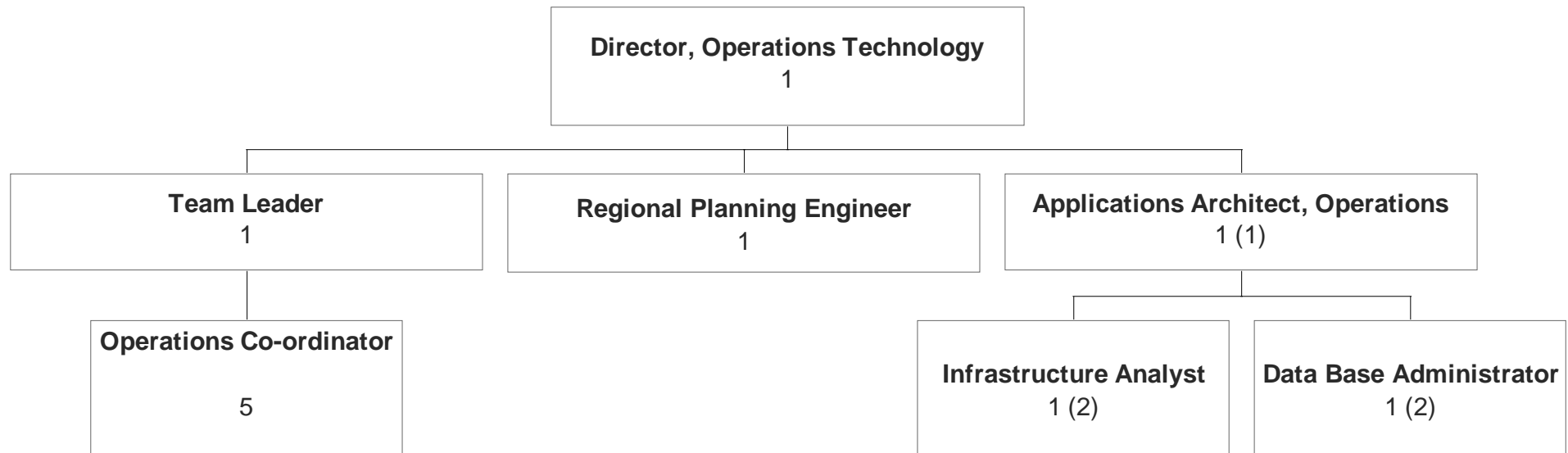


(1) Dual reporting with Manager, Western Region.

NEWFOUNDLAND POWER INC. ENGINEERING & OPERATIONS

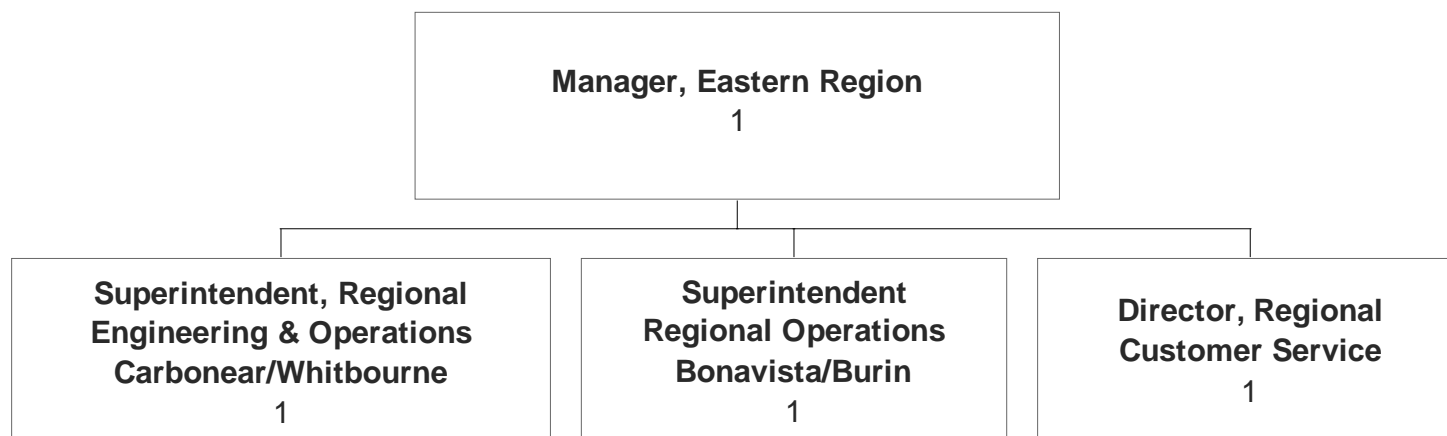
PUB-NP-094, Attachment A
Page 33 of 43

OPERATIONS TECHNOLOGY



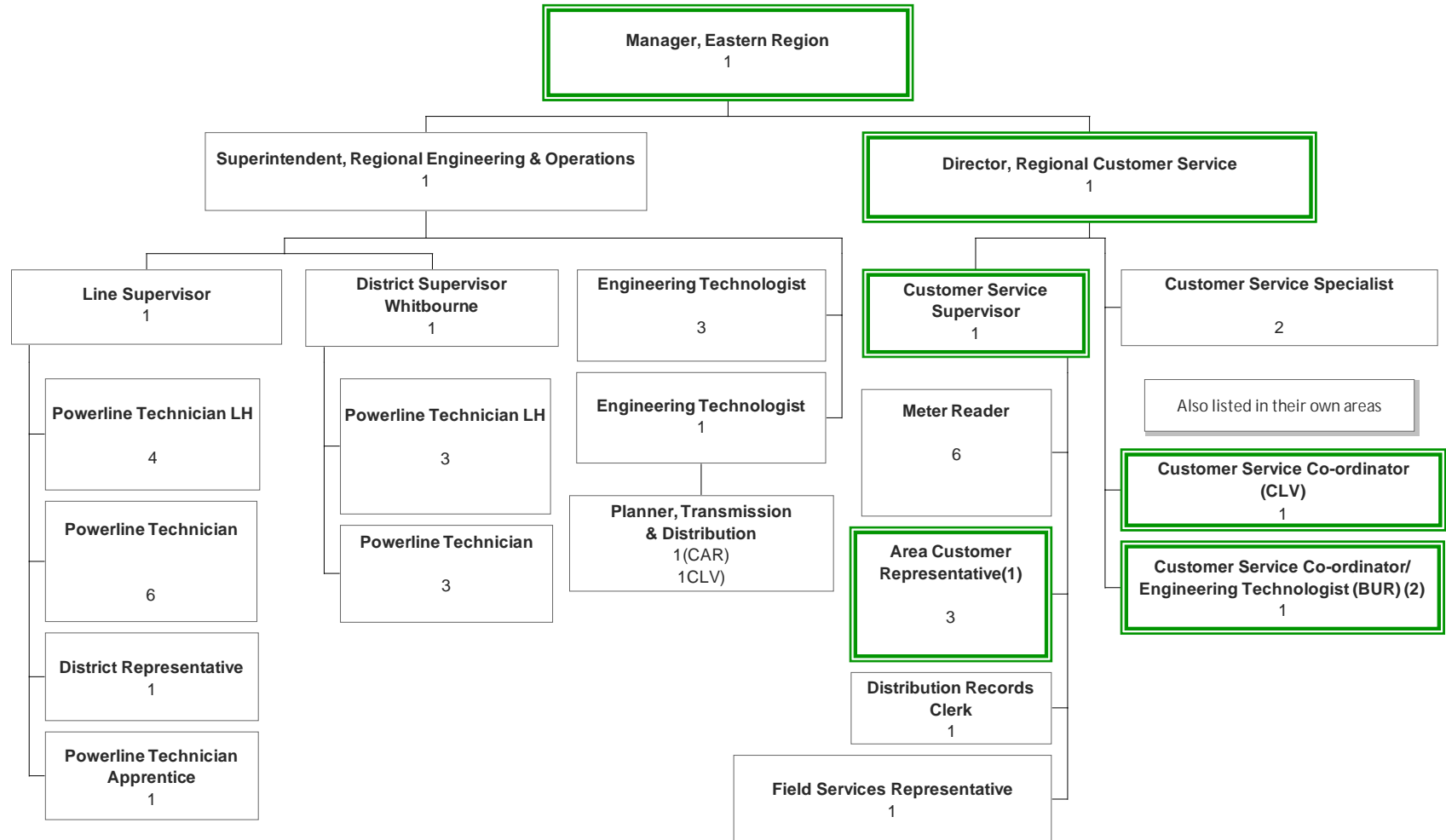
NEWFOUNDLAND POWER INC. ENGINEERING & OPERATIONS

EASTERN REGION



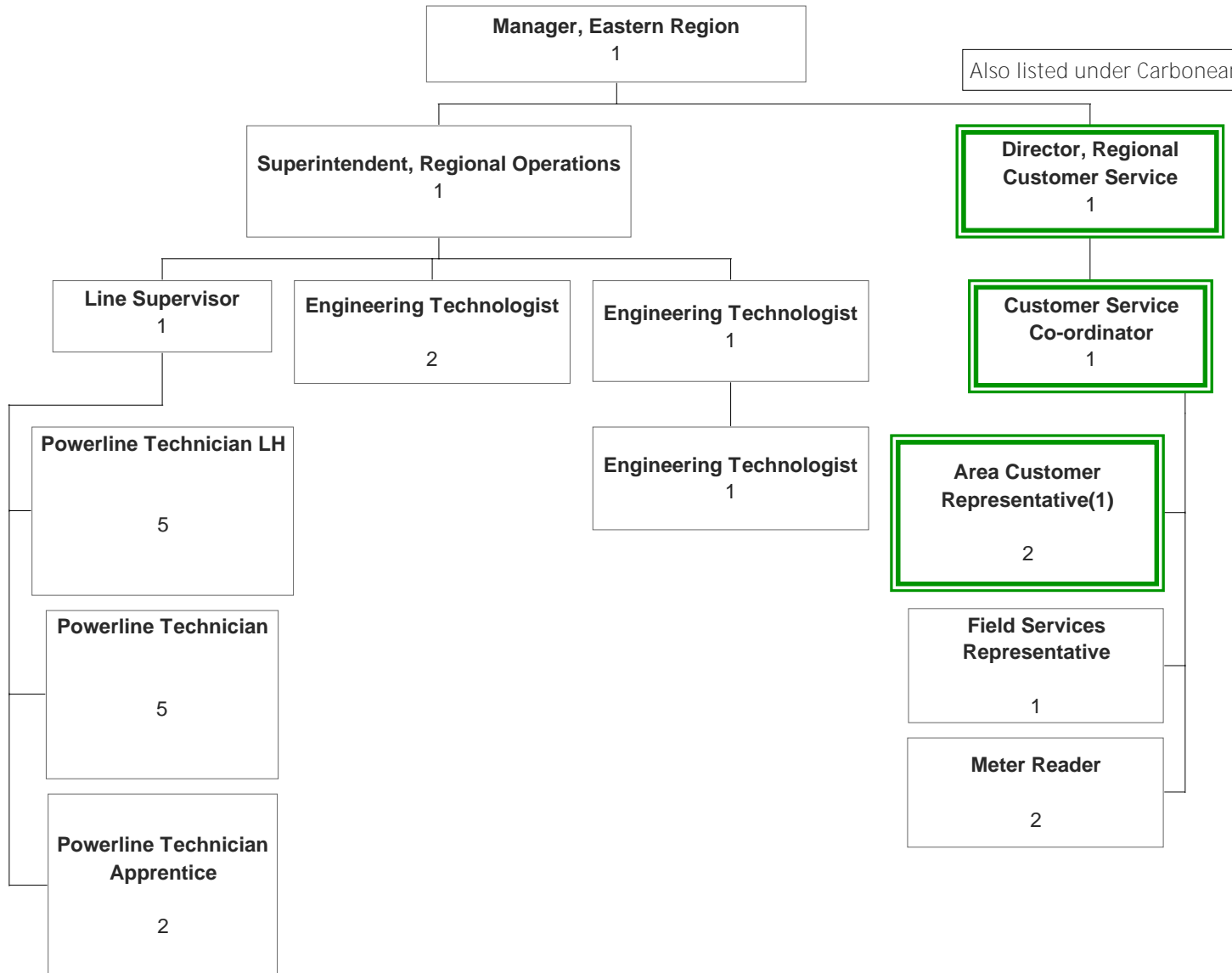
NEWFOUNDLAND POWER INC. ENGINEERING AND OPERATIONS

CARBONEAR & WHITBOURNE AREA OPERATIONS



NEWFOUNDLAND POWER INC. ENGINEERING & OPERATIONS

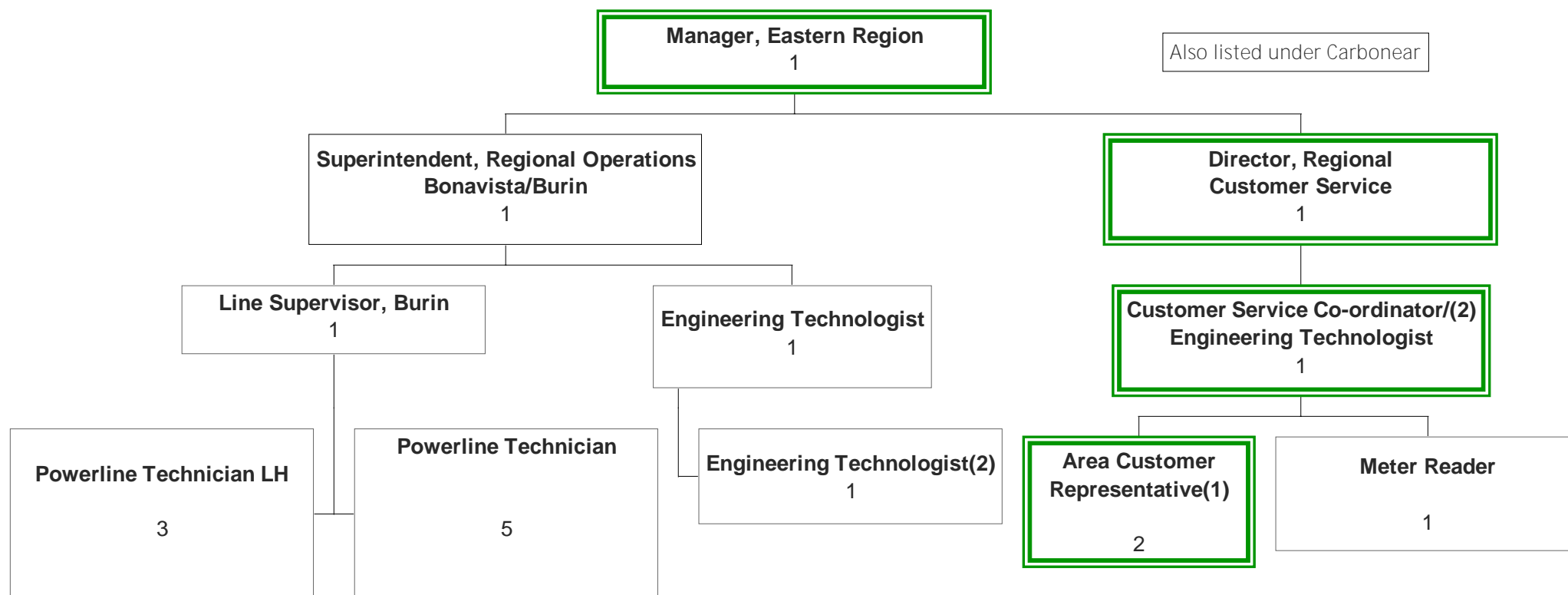
BONAVISTA AREA OPERATIONS



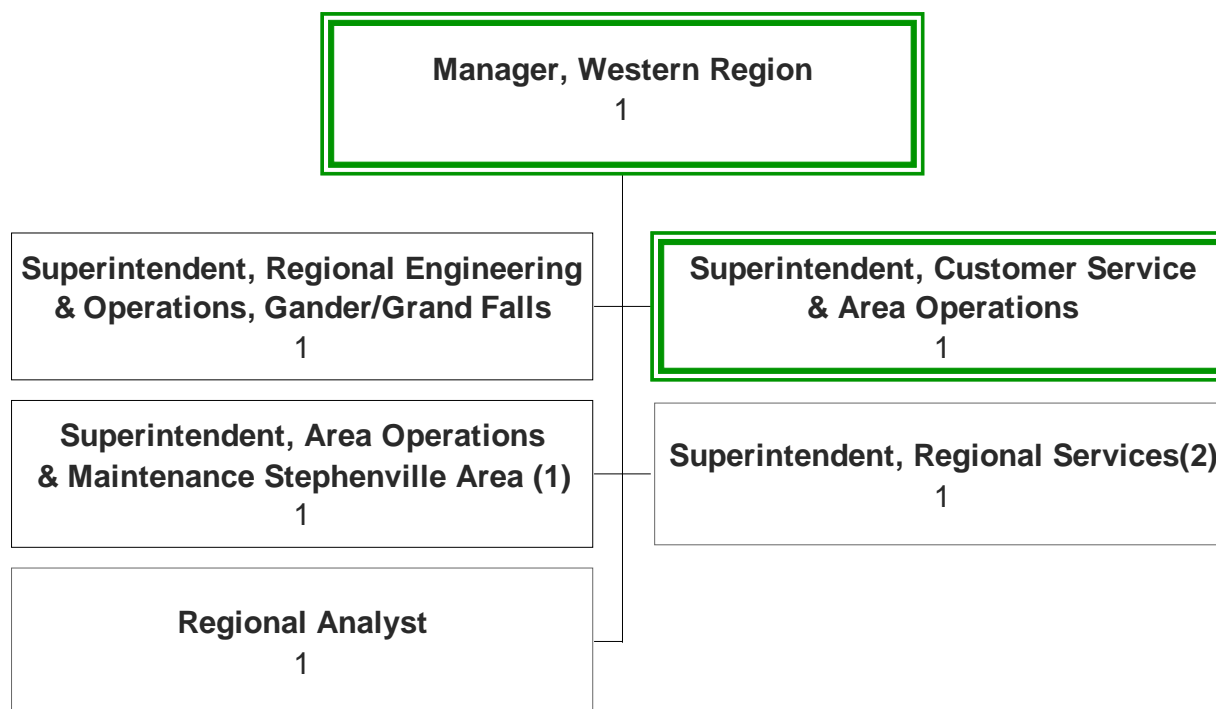
NEWFOUNDLAND POWER INC. ENGINEERING & OPERATIONS

PUB-NP-094, Attachment A
Page 37 of 43

BURIN AREA OPERATIONS



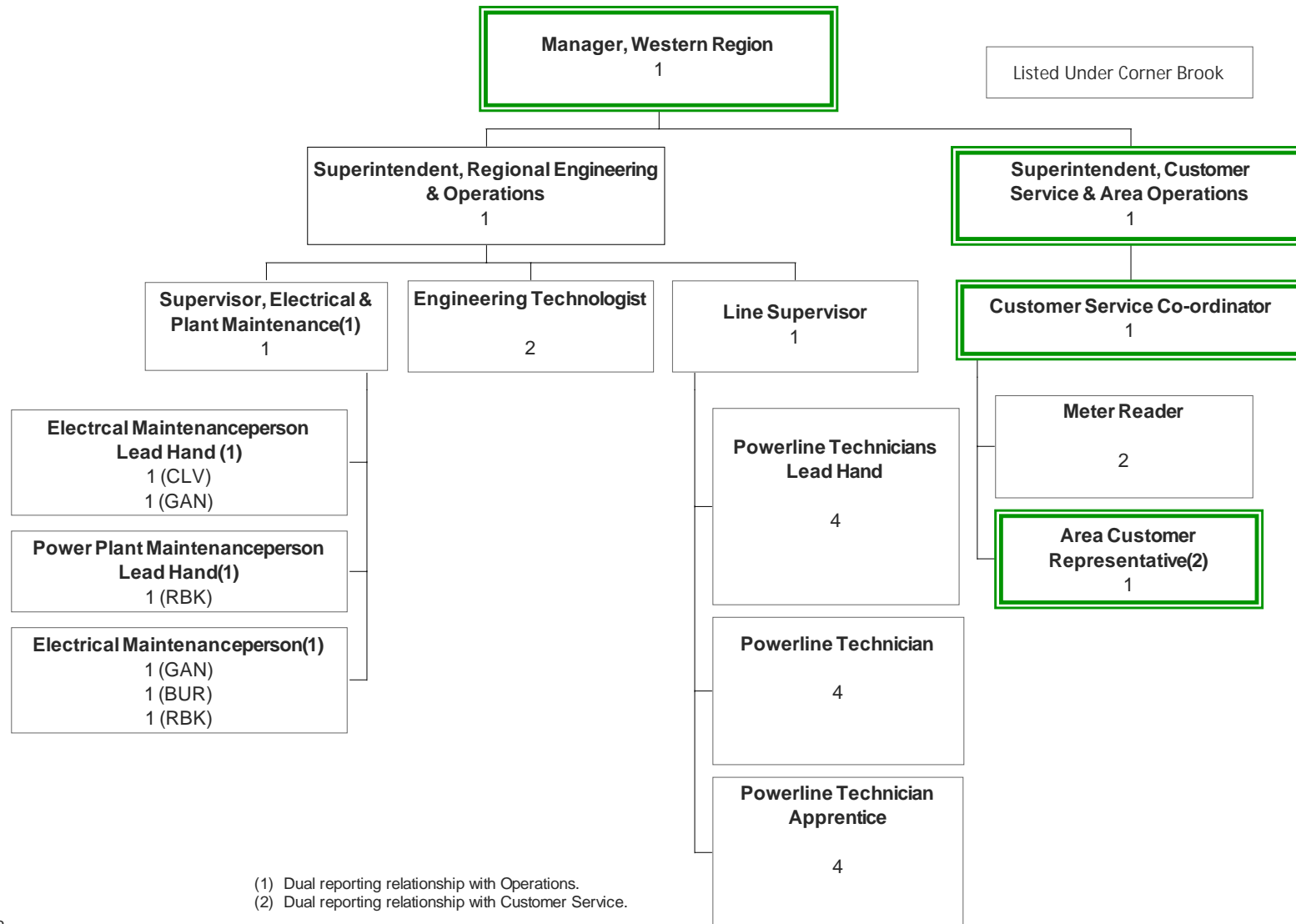
NEWFOUNDLAND POWER INC. WESTERN REGION



NEWFOUNDLAND POWER INC. WESTERN REGION

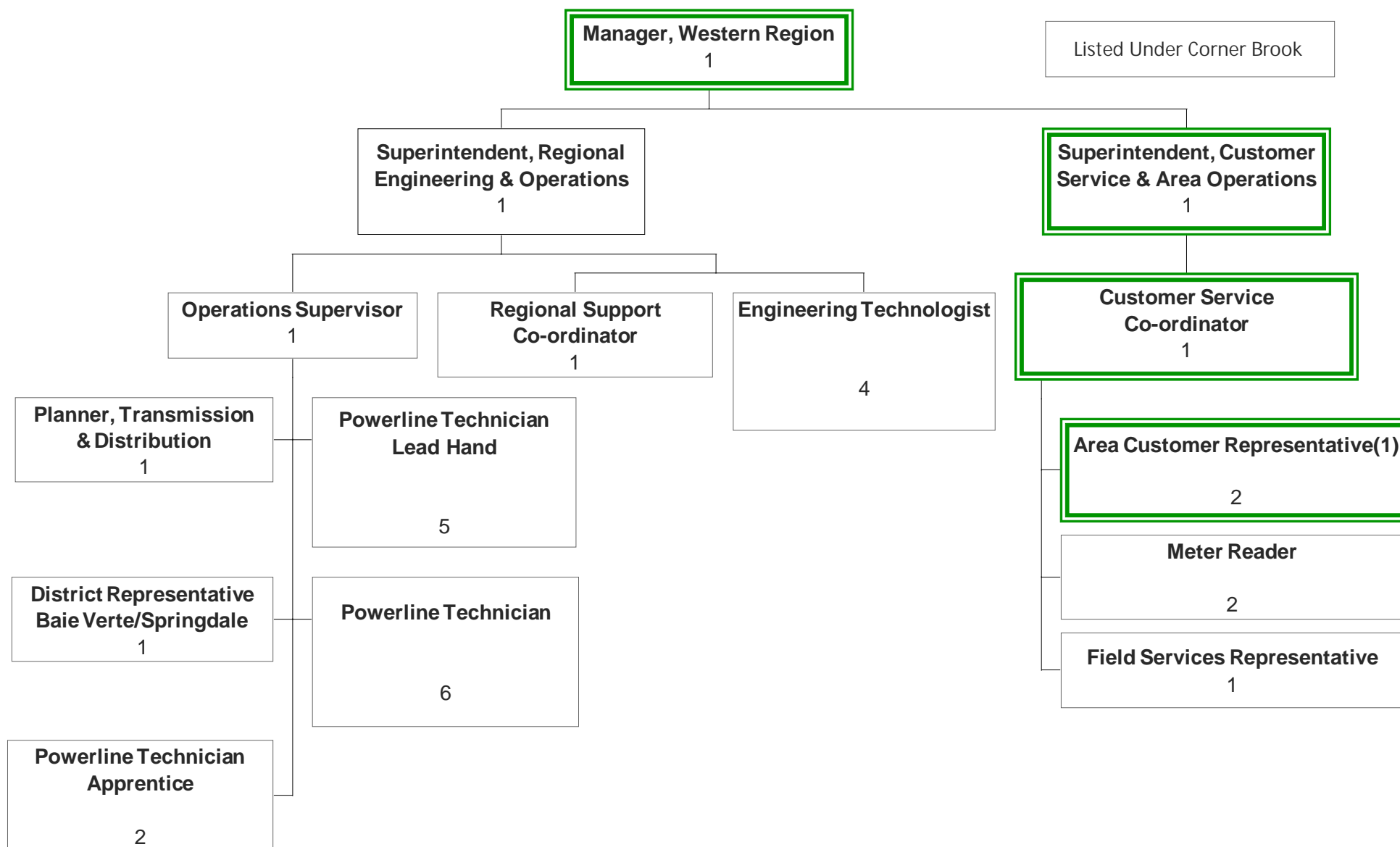
PUB-NP-094, Attachment A
Page 39 of 43

REGIONAL OPERATIONS, GANDER



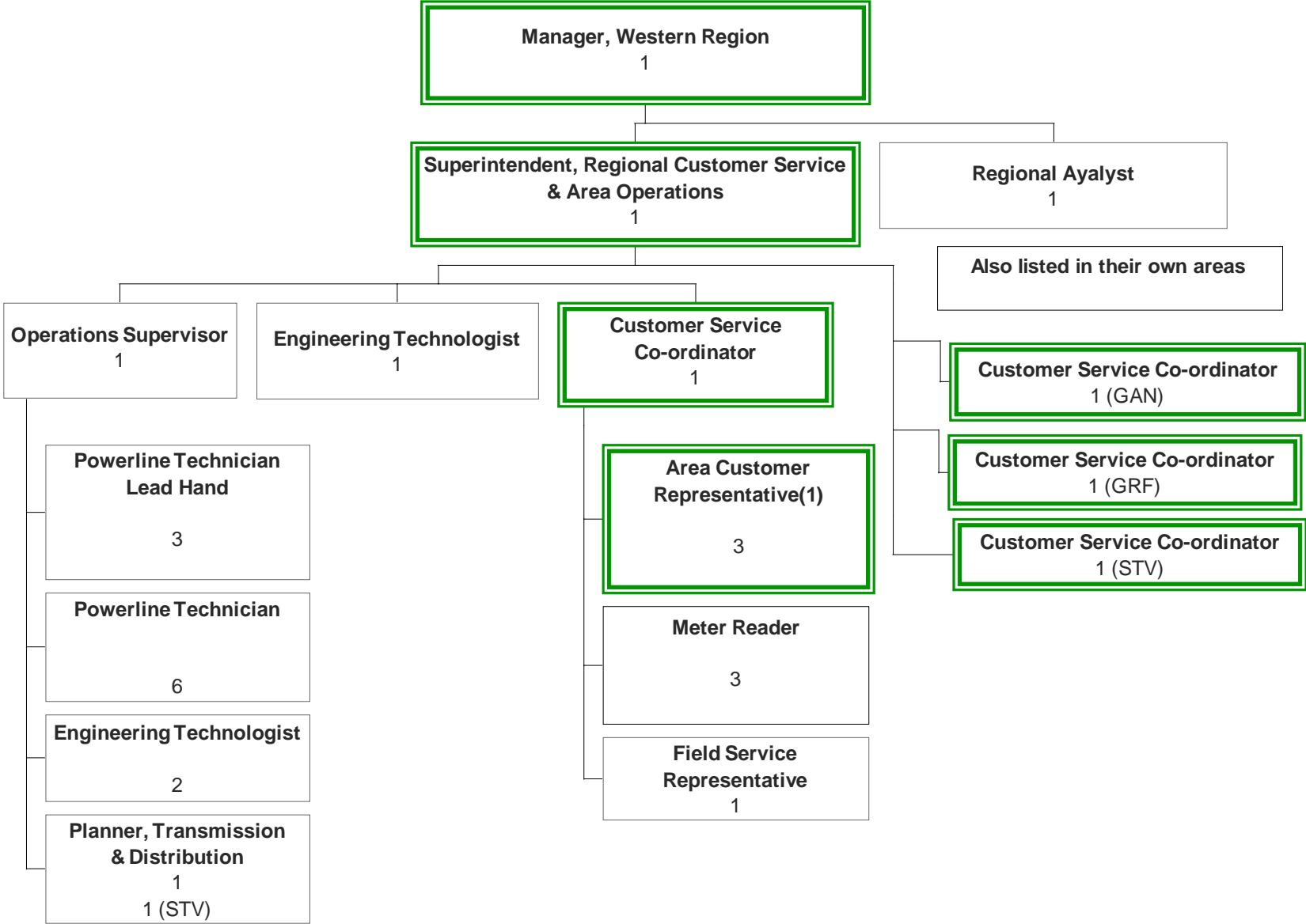
NEWFOUNDLAND POWER INC. WESTERN REGION GRAND FALLS AREA

PUB-NP-094, Attachment A
Page 40 of 43



NEWFOUNDLAND POWER INC.
WESTERN REGION

CORNER BROOK

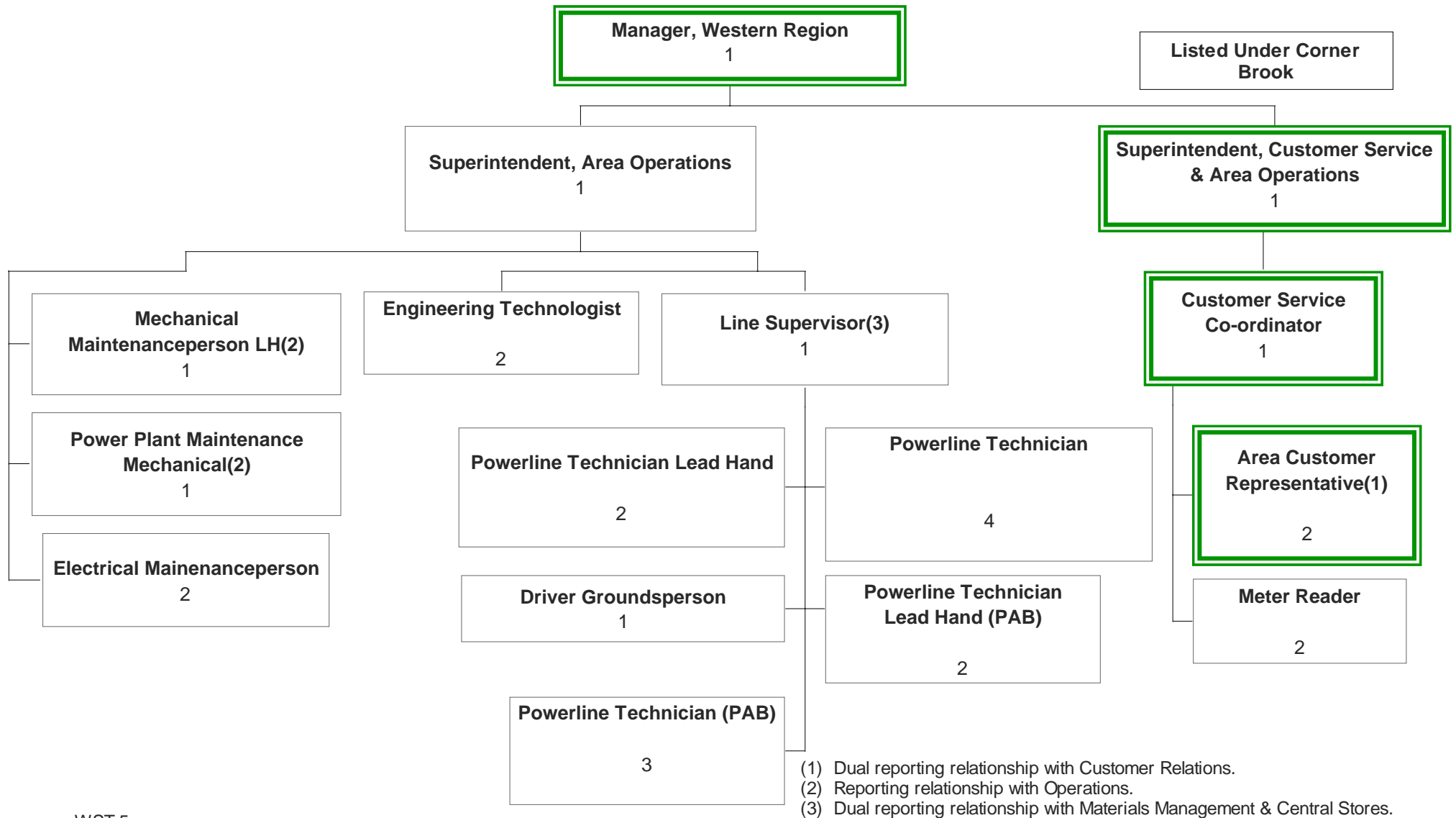


1. Dual reporting with Customer Relations.

NEWFOUNDLAND POWER INC. WESTERN REGION

PUB-NP-094, Attachment A
Page 42 of 43

STEPHENVILLE AREA



NEWFOUNDLAND POWER INC. WESTERN REGION

TRANSPORTATION

