

1 Q. **Staffing**

2 Further to PUB-NLH-424 for those organization charts that are shown on page 5  
3 through 7 of the Governance Presentation that reference another “*Chart*” provide  
4 these charts and for these charts provide the same information as requested in  
5 PUB-NLH-427 and PUB-NLH-428.

6

7

8 A. Copies of the charts referenced on page 5 through 7 of the Governance  
9 Presentation are provided in PUB-NLH-429 Attachment 1 and PUB-NLH-429  
10 Attachment 2. Please see Hydro's response to PUB-NLH-427 for these updated  
11 Charts along with a summary of the changes. Please see Hydro's response to PUB-  
12 NLH-426 and PUB-NLH-428 for the list of all the positions not assigned to Hydro and  
13 the percentage of time charged to Hydro.

# Project Execution & Technical Services

## Top Level Structure (1 of 6)

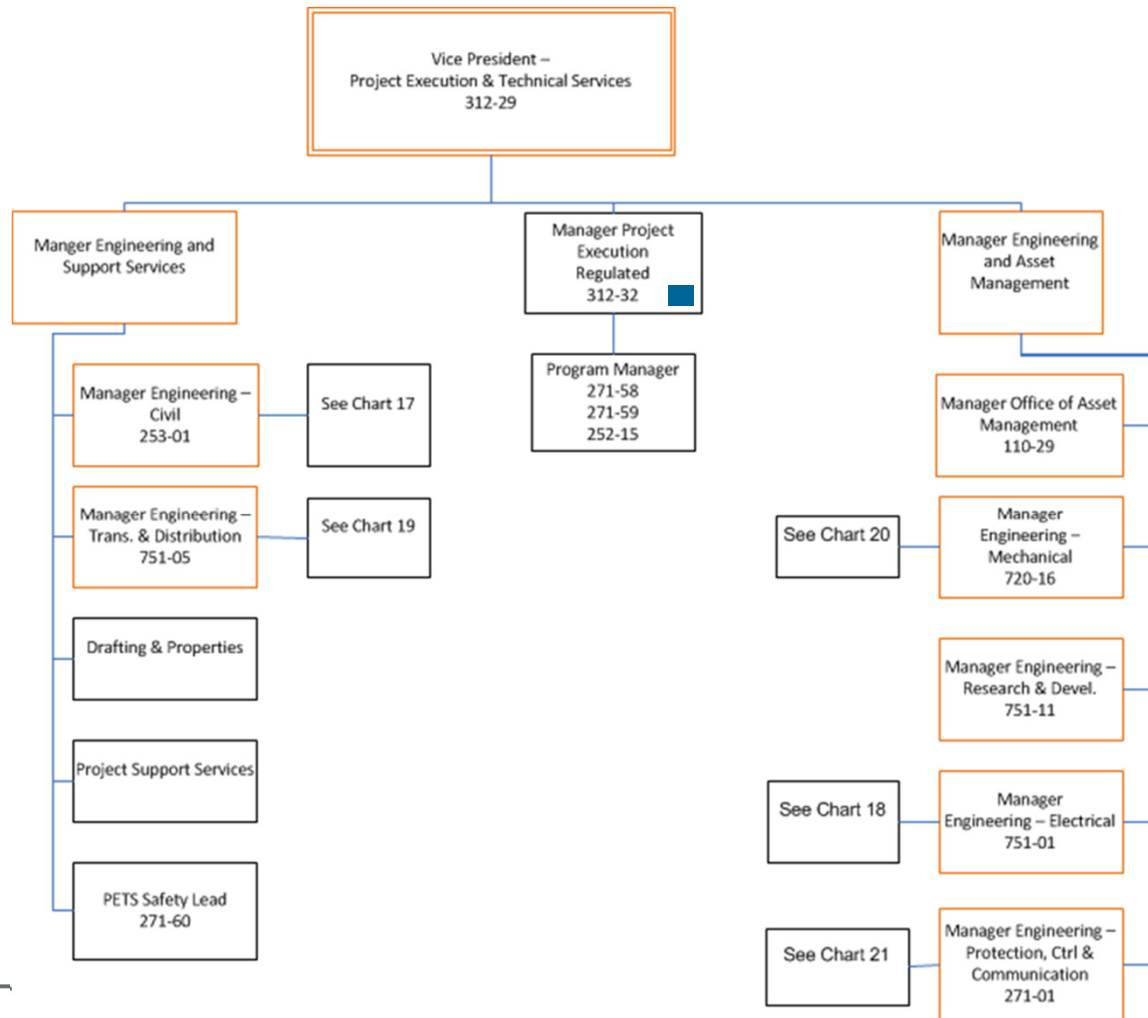


Chart #16

# Project Execution & Technical Services

## Civil Engineering (2 of 6)

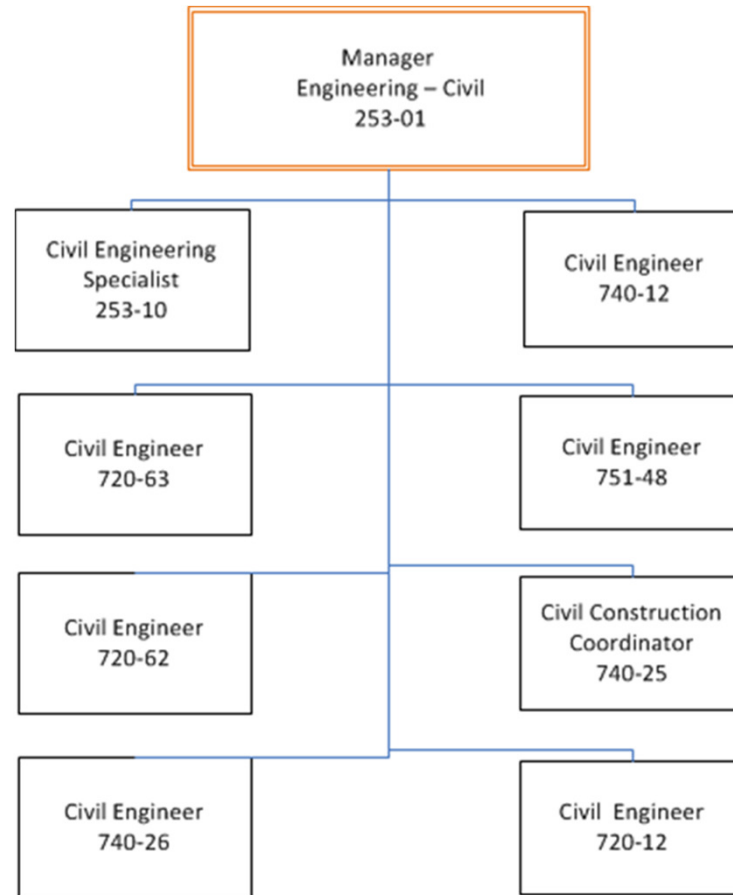


Chart #17

# Project Execution & Technical Services

## Electrical Engineering (3 of 6)

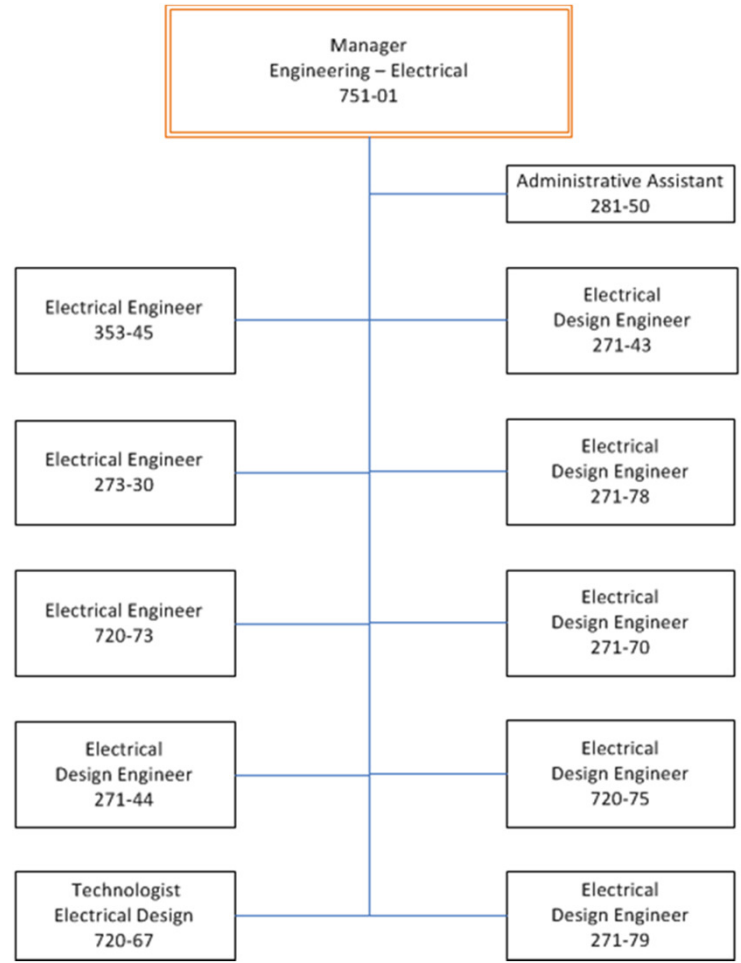


Chart #18

# Project Execution & Technical Services

## Transmission & Distribution Engineering (4 of 6)

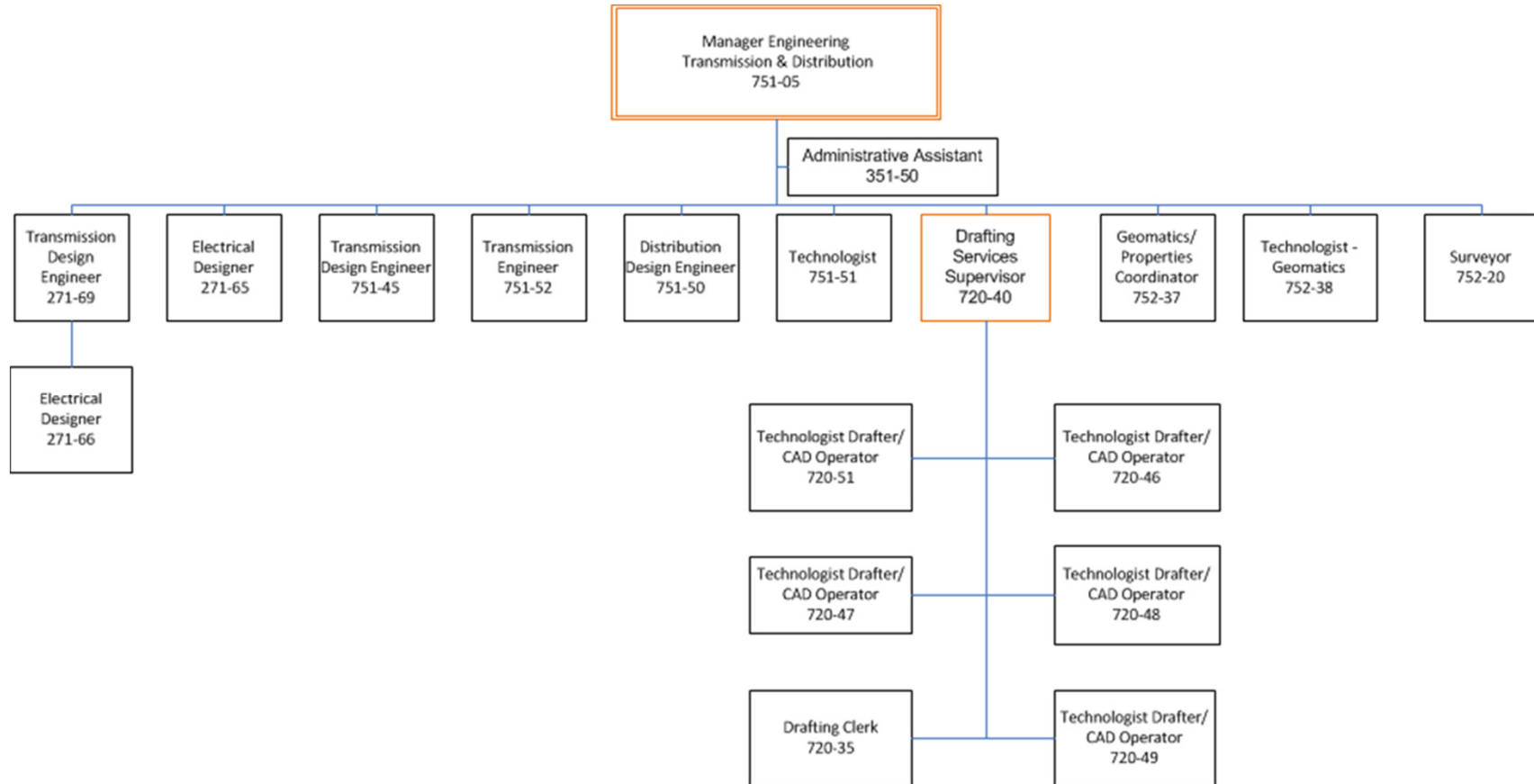


Chart #19

# Project Execution & Technical Services

## Mechanical Engineering (5 of 6)

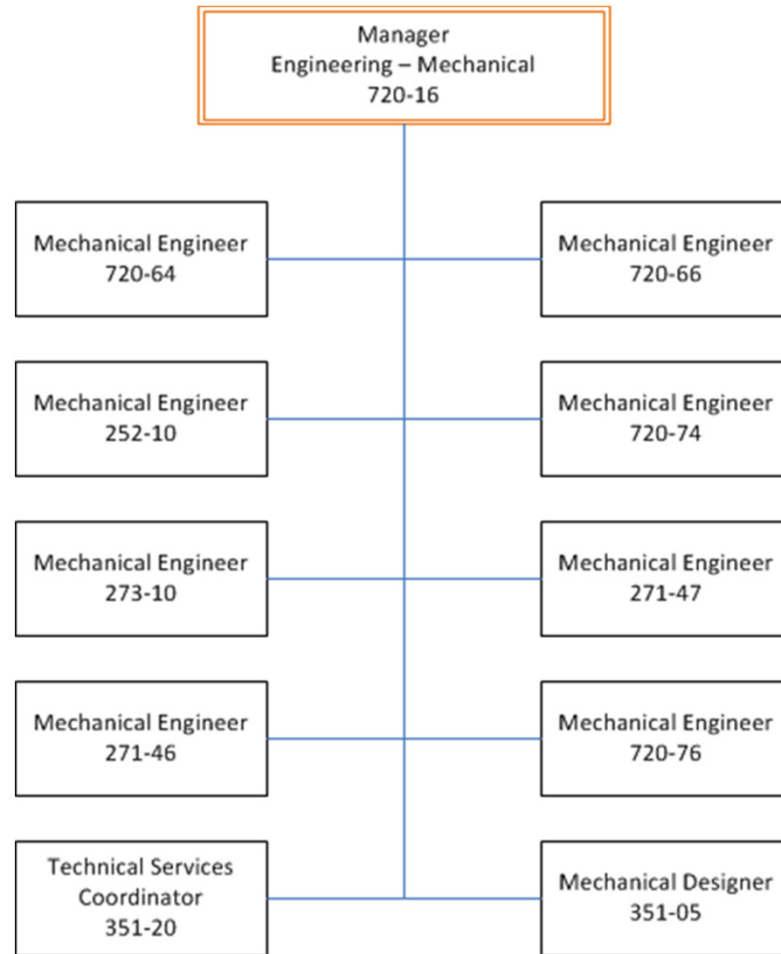


Chart #20

# Project Execution & Technical Services

## PC&C Engineering (6 of 6)

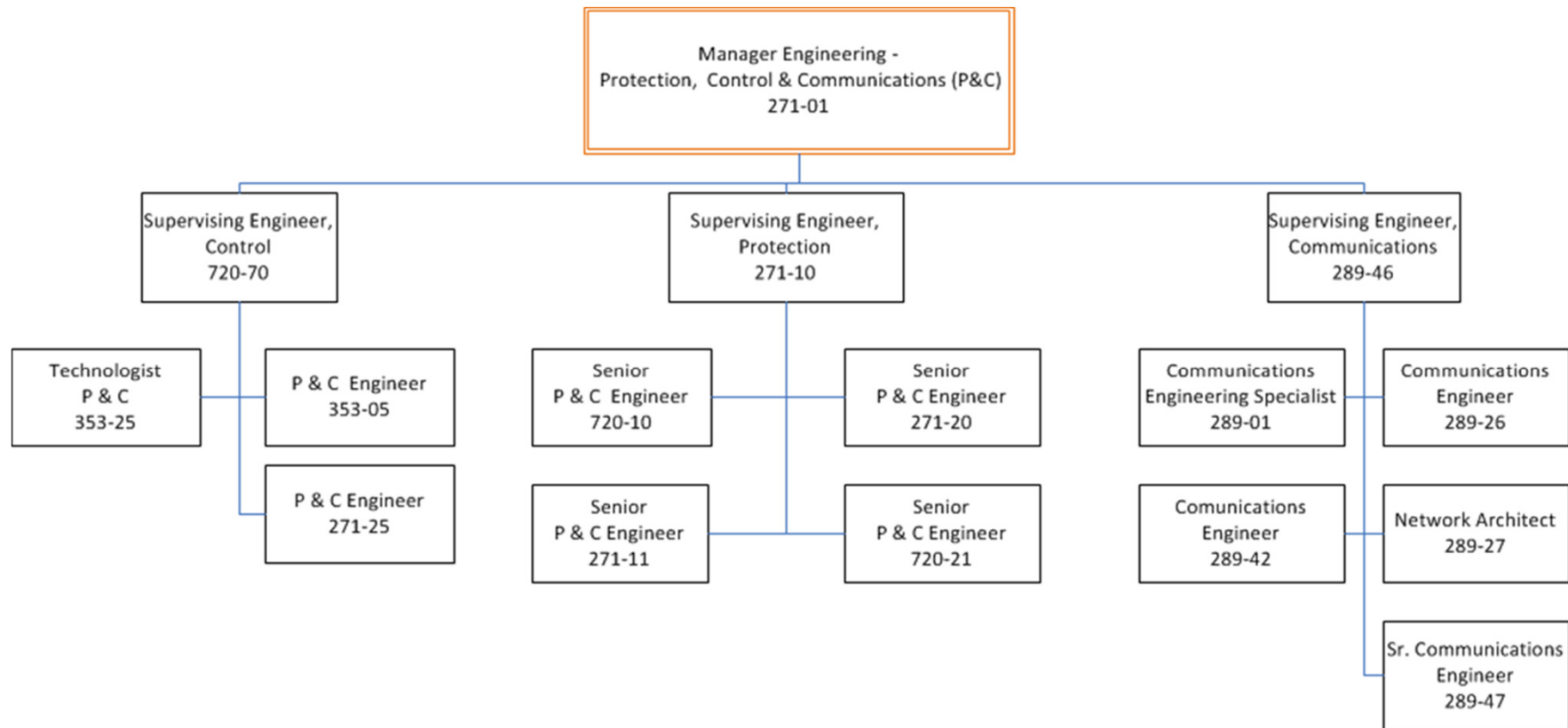


Chart #21

# Finance (3 of 5)

## Supply Chain Management & Administration

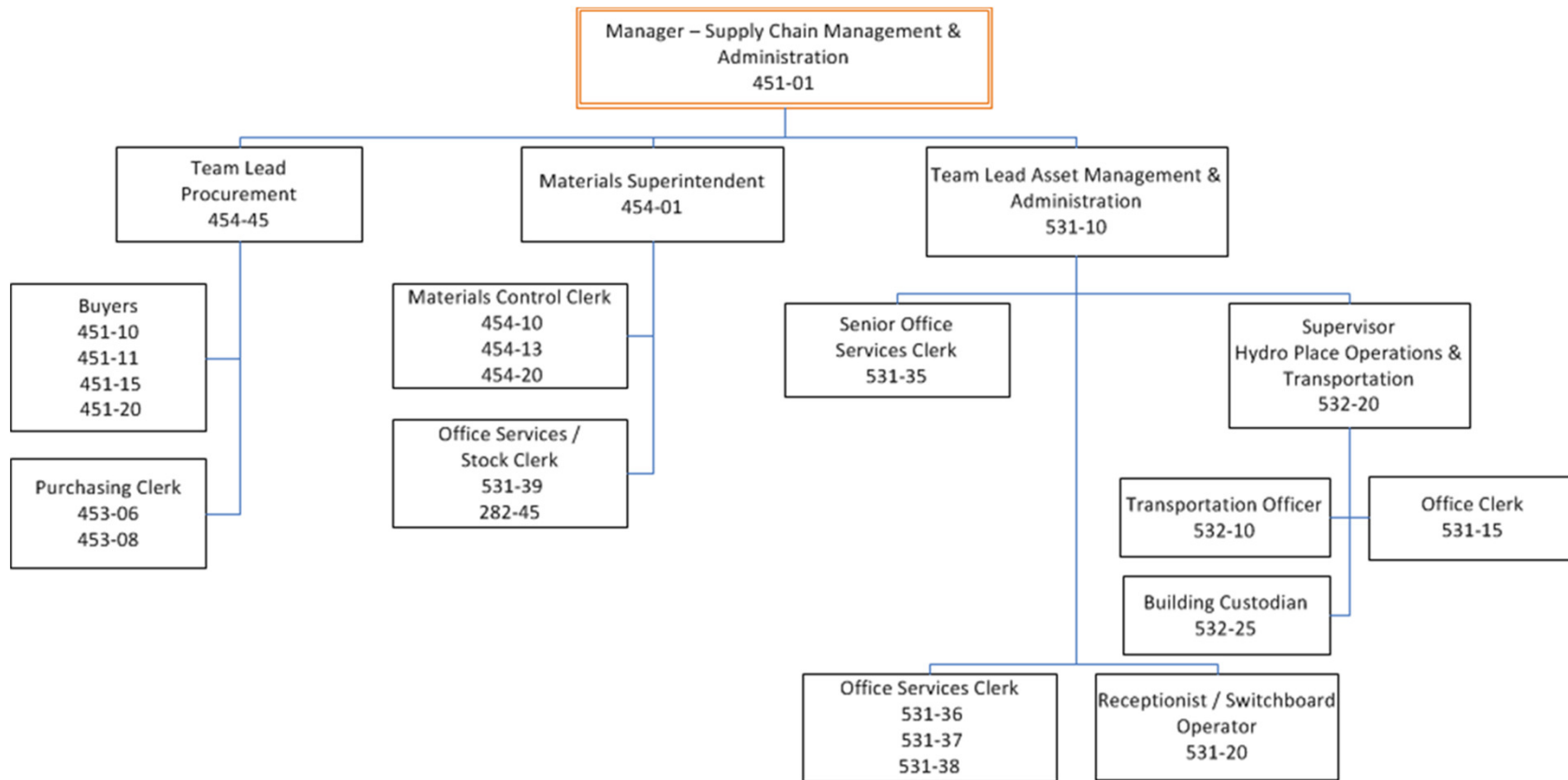


Chart #25