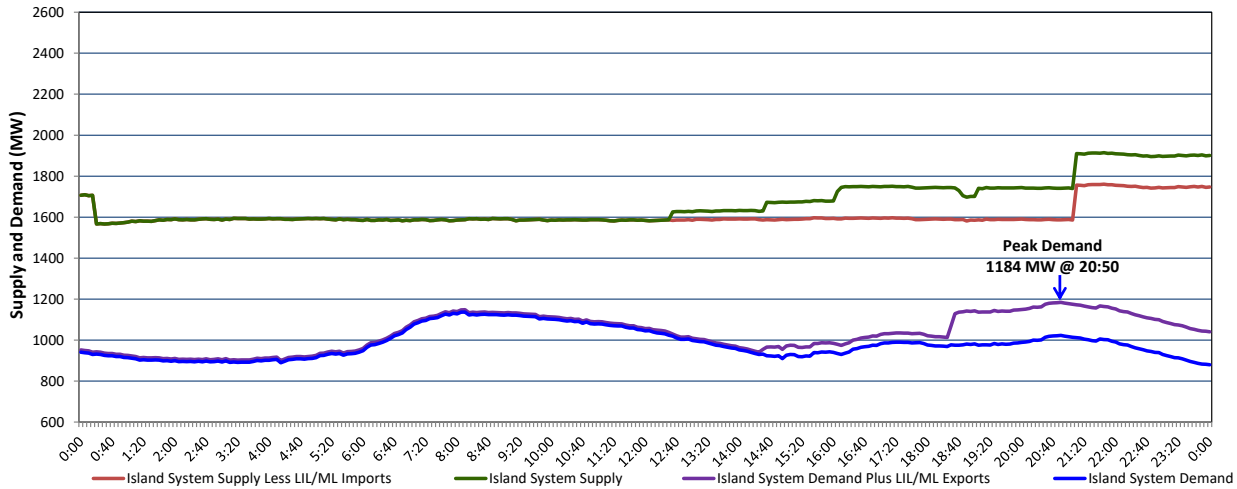


Newfoundland Labrador Hydro (NLH) Supply and Demand Status Report Filed Tuesday, April 26, 2022

Section 1 Island Interconnected System Supply, Demand & Exports Actual 24 Hour System Performance For Monday, April 25, 2022



Supply Notes For April 25, 2022

1,2

- A As of 0857 hours, April 04, 2022, Holyrood Unit 3 unavailable due to planned outage (150 MW).
 B As of 0850 hours, April 11, 2022, Bay d'Espoir Unit 1 unavailable due to planned outage (76.5 MW).
 C As of 0813 hours, April 19, 2022, Holyrood Unit 2 returned to service 150 MW (170 MW).
 D As of 1210 hours, April 22, 2022, Bay d'Espoir Unit 2 unavailable due to planned outage (76.5 MW).
 E **At 0016 hours, April 25, 2022, Holyrood Unit 1 unavailable 140 MW (170 MW).**
 F **At 2110 hours, April 25, 2022, Holyrood Unit 1 available at full capacity (170 MW).**

Section 2 Island Interconnected Supply and Demand

Tue, Apr 26, 2022	Island System Outlook ³		Seven-Day Forecast		Temperature (°C)		Island System Daily Peak Demand (MW)	
					Morning	Evening	Forecast	Adjusted ⁷
Available Island System Supply: ⁵	1,887	MW	Tuesday, April 26, 2022	2	0	1,265	1,170	
NLH Island Generation: ^{4,8}	1,370	MW	Wednesday, April 27, 2022	1	2	1,110	1,017	
NLH Island Power Purchases: ⁶	135	MW	Thursday, April 28, 2022	0	3	1,120	1,027	
Other Island Generation:	225	MW	Friday, April 29, 2022	3	2	1,100	1,007	
ML/LIL Imports:	157	MW	Saturday, April 30, 2022	3	4	1,055	963	
Current St. John's Temperature & Windchill:	1 °C	N/A	Sunday, May 1, 2022	3	3	1,015	1,015	
7-Day Island Peak Demand Forecast:	1,265	MW	Monday, May 2, 2022	5	7	1,070	1,070	

Supply Notes For April 26, 2022

3

- Notes:
1. Generation outages for running and corrective maintenance are included. These are not unusual for power system operations. They generally do not impact customer supply. The power system operators schedule outages to system equipment whenever possible to coincide with periods when customer demands are low and sufficient supply reserves are available. However, from time to time equipment outages are necessary and reserves may be impacted.
 2. Due to the Island system having no synchronous connections to the larger North American grid, when there is a sudden loss of large generating units there may be a requirement for some customer's load to be interrupted for short periods to bring generation output equal to customer demand. This automatic action of power system protection, referred to as under frequency load shedding (UFLS), is necessary to ensure the integrity and reliability of system equipment. Under frequency events have typically occurred 5 to 8 times per year on the Island Interconnected System and the resultant customer load interruptions are generally less than 30 minutes. With the activation of the Maritime Link frequency controller during the winter of 2018, UFLS events have occurred less frequently.
 3. As of 0800 Hours.
 4. Gross output including station service at Holyrood (24.5 MW) and improved NLH hydraulic output due to water levels (35 MW).
 5. Gross output from all Island sources (including Note 4).
 6. NLH Island Power Purchases include: CBPP Co-Gen, Nalcor Exploits, Rattle Brook, Star Lake, Wind Generation and capacity assistance (when applicable).
 7. Adjusted for curtailable load, market activities and the impact of voltage reduction when applicable.
 8. Due to limitations inherent in the design of combustion turbines, the output of combustion turbines may be reduced in the event that ambient temperatures exceed the threshold.

Section 3 Island Peak Demand Information Previous Day Actual Peak and Current Day Forecast Peak

Mon, Apr 25, 2022	Actual Island Peak Demand ⁹	20:50	1,184 MW
Tue, Apr 26, 2022	Forecast Island Peak Demand		1,265 MW

- Notes: 9. Island Demand / LIL / ML Exports (where applicable) is supplied by NLH generation and purchases, plus generation owned and operated by Newfoundland Power and Corner Brook Pulp & Paper (Deer Lake Power, DLP).