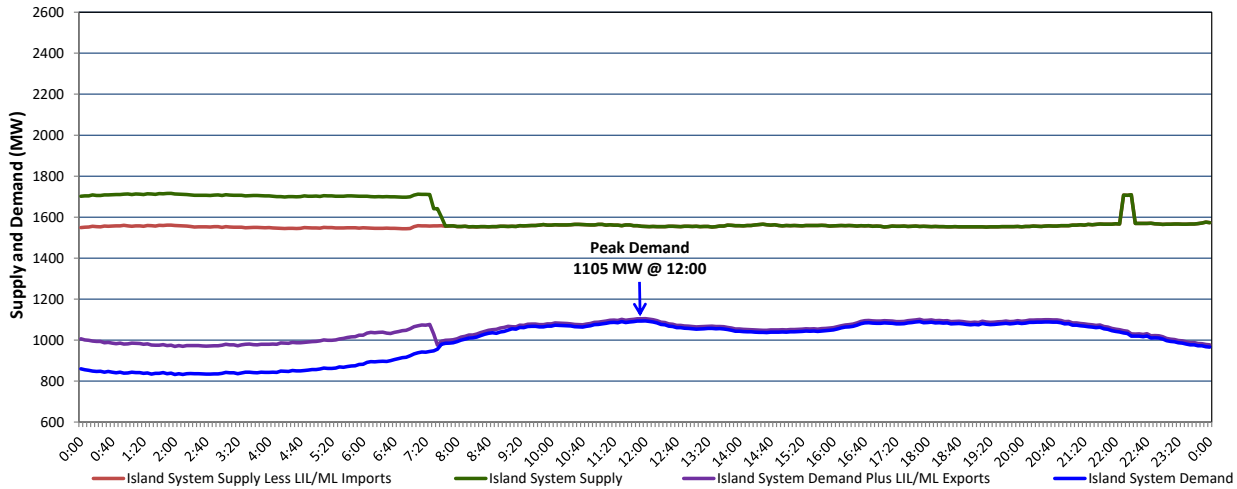


## Newfoundland Labrador Hydro (NLH) Supply and Demand Status Report Filed Monday, April 25, 2022

### Section 1 Island Interconnected System Supply, Demand & Exports Actual 24 Hour System Performance For Saturday, April 23, 2022



#### Supply Notes For April 23, 2022

1,2

- A As of 0857 hours, April 04, 2022, Holyrood Unit 3 unavailable due to planned outage (150 MW).
- B As of 0850 hours, April 11, 2022, Bay d'Espoir Unit 1 unavailable due to planned outage (76.5 MW).
- C As of 0813 hours, April 19, 2022, Holyrood Unit 2 returned to service 150 MW (170 MW).
- D As of 1210 hours, April 22, 2022, Bay d'Espoir Unit 2 unavailable due to planned outage (76.5 MW).
- E At 2205 hours, April 23, 2022, Holyrood Unit 1 returned to service 140 MW (170 MW).
- F At 2221 hours, April 23, 2022, Holyrood Unit 1 unavailable 140 MW (170 MW).

### Section 2 Island Interconnected Supply and Demand

Sun, Apr 24, 2022	Island System Outlook <sup>3</sup>		Seven-Day Forecast	Temperature (°C)		Island System Daily Peak Demand (MW)	
				Morning	Evening	Forecast	Adjusted <sup>7</sup>
Available Island System Supply: <sup>5</sup>	1,565	MW	Sunday, April 24, 2022	1	2	1,230	1,136
NLH Island Generation: <sup>4,8</sup>	1,200	MW	Monday, April 25, 2022	3	2	1,140	1,047
NLH Island Power Purchases: <sup>6</sup>	140	MW	Tuesday, April 26, 2022	2	1	1,135	1,042
Other Island Generation:	225	MW	Wednesday, April 27, 2022	2	2	1,110	1,017
ML/LIL Imports:	-	MW	Thursday, April 28, 2022	2	2	1,090	997
Current St. John's Temperature & Windchill:	1 °C	N/A °C	Friday, April 29, 2022	4	4	1,055	963
7-Day Island Peak Demand Forecast:	1,230	MW	Saturday, April 30, 2022	5	5	1,020	928

#### Supply Notes For April 24, 2022

3

- Notes:
1. Generation outages for running and corrective maintenance are included. These are not unusual for power system operations. They generally do not impact customer supply. The power system operators schedule outages to system equipment whenever possible to coincide with periods when customer demands are low and sufficient supply reserves are available. However, from time to time equipment outages are necessary and reserves may be impacted.
  2. Due to the Island system having no synchronous connections to the larger North American grid, when there is a sudden loss of large generating units there may be a requirement for some customer's load to be interrupted for short periods to bring generation output equal to customer demand. This automatic action of power system protection, referred to as under frequency load shedding (UFLS), is necessary to ensure the integrity and reliability of system equipment. Under frequency events have typically occurred 5 to 8 times per year on the Island Interconnected System and the resultant customer load interruptions are generally less than 30 minutes. With the activation of the Maritime Link frequency controller during the winter of 2018, UFLS events have occurred less frequently.
  3. As of 0800 Hours.
  4. Gross output including station service at Holyrood (24.5 MW) and improved NLH hydraulic output due to water levels (35 MW).
  5. Gross output from all Island sources (including Note 4).
  6. NLH Island Power Purchases include: CBPP Co-Gen, Nalcor Exploits, Rattle Brook, Star Lake, Wind Generation and capacity assistance (when applicable).
  7. Adjusted for curtailable load, market activities and the impact of voltage reduction when applicable.
  8. Due to limitations inherent in the design of combustion turbines, the output of combustion turbines may be reduced in the event that ambient temperatures exceed the threshold.

### Section 3 Island Peak Demand Information Previous Day Actual Peak and Current Day Forecast Peak

Sat, Apr 23, 2022	Actual Island Peak Demand <sup>9</sup>	12:00	1,105 MW
Sun, Apr 24, 2022	Forecast Island Peak Demand		1,230 MW

- Notes: 9. Island Demand / LIL / ML Exports (where applicable) is supplied by NLH generation and purchases, plus generation owned and operated by Newfoundland Power and Corner Brook Pulp & Paper (Deer Lake Power, DLP).