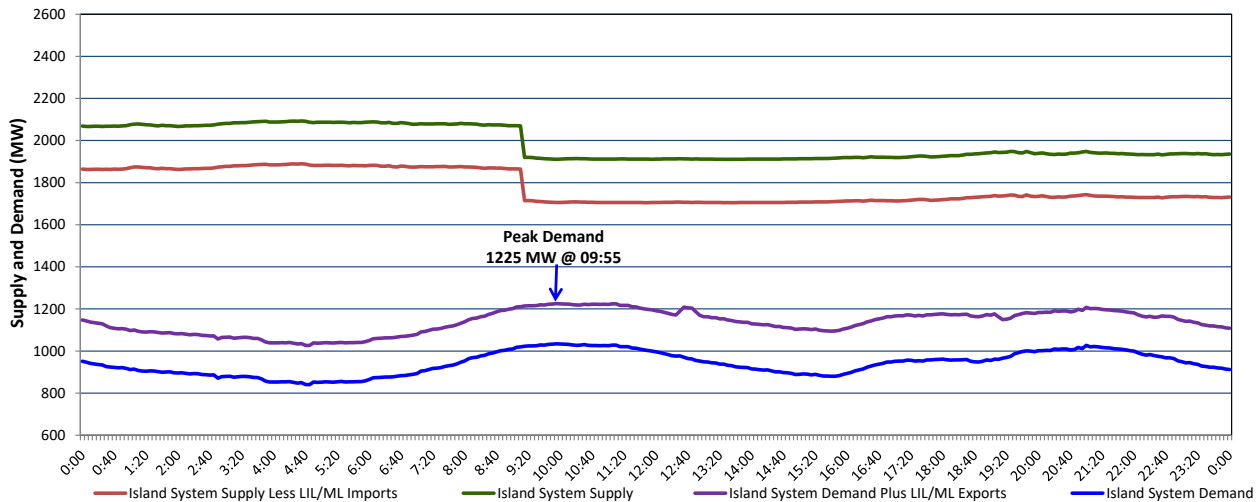


Newfoundland Labrador Hydro (NLH) Supply and Demand Status Report Filed Monday, April 11, 2022

Section 1 Island Interconnected System Supply, Demand & Exports Actual 24 Hour System Performance For Sunday, April 10, 2022



Supply Notes For April 10, 2022

1,2

- A As of 1256 hours, April 03, 2022, Paradise River Unit unavailable due to planned outage (8 MW).
- B As of 0857 hours, April 04, 2022, Holyrood Unit 3 unavailable due to planned outage (150 MW).
- C **At 0913 hours, April 10, 2022, Holyrood Unit 2 unavailable due to planned outage 150 MW (170 MW).**
- D **At 1700 hours, April 10, 2022, Holyrood Unit 2 available but not operating 150 MW (170 MW).**

Section 2 Island Interconnected Supply and Demand

Mon, Apr 11, 2022	Island System Outlook ³		Seven-Day Forecast		Temperature (°C)		Island System Daily Peak Demand (MW)	
					Morning	Evening	Forecast	Adjusted ⁷
Available Island System Supply: ⁵	2,000	MW	Monday, April 11, 2022		0	0	1,350	1,254
NLH Island Generation: ^{4,8}	1,365	MW	Tuesday, April 12, 2022		1	1	1,170	1,076
NLH Island Power Purchases: ⁶	140	MW	Wednesday, April 13, 2022		1	0	1,195	1,101
Other Island Generation:	225	MW	Thursday, April 14, 2022		-1	-2	1,225	1,131
ML/LIL Imports:	270	MW	Friday, April 15, 2022		-2	-2	1,125	1,032
Current St. John's Temperature & Windchill:	-1 °C	°C	Saturday, April 16, 2022		1	3	1,050	958
7-Day Island Peak Demand Forecast:	1,350	MW	Sunday, April 17, 2022		3	3	1,010	918

Supply Notes For April 11, 2022

3

- Notes:
1. Generation outages for running and corrective maintenance are included. These are not unusual for power system operations. They generally do not impact customer supply. The power system operators schedule outages to system equipment whenever possible to coincide with periods when customer demands are low and sufficient supply reserves are available. However, from time to time equipment outages are necessary and reserves may be impacted.
 2. Due to the Island system having no synchronous connections to the larger North American grid, when there is a sudden loss of large generating units there may be a requirement for some customer's load to be interrupted for short periods to bring generation output equal to customer demand. This automatic action of power system protection, referred to as under frequency load shedding (UFLS), is necessary to ensure the integrity and reliability of system equipment. Under frequency events have typically occurred 5 to 8 times per year on the Island Interconnected System and the resultant customer load interruptions are generally less than 30 minutes. With the activation of the Maritime Link frequency controller during the winter of 2018, UFLS events have occurred less frequently.
 3. As of 0800 Hours.
 4. Gross output including station service at Holyrood (24.5 MW) and improved NLH hydraulic output due to water levels (35 MW).
 5. Gross output from all Island sources (including Note 4).
 6. NLH Island Power Purchases include: CBPP Co-Gen, Nalcor Exploits, Rattle Brook, Star Lake, Wind Generation and capacity assistance (when applicable).
 7. Adjusted for curtailable load, market activities and the impact of voltage reduction when applicable.
 8. Due to limitations inherent in the design of combustion turbines, the output of combustion turbines may be reduced in the event that ambient temperatures exceed the threshold

Section 3 Island Peak Demand Information Previous Day Actual Peak and Current Day Forecast Peak

Sun, Apr 10, 2022	Actual Island Peak Demand ⁹	9:55	1,225 MW
Mon, Apr 11, 2022	Forecast Island Peak Demand		1,350 MW

- Notes: 9. Island Demand / LIL / ML Exports (where applicable) is supplied by NLH generation and purchases, plus generation owned and operated by Newfoundland Power and Corner Brook Pulp & Paper (Deer Lake Power, DLP).