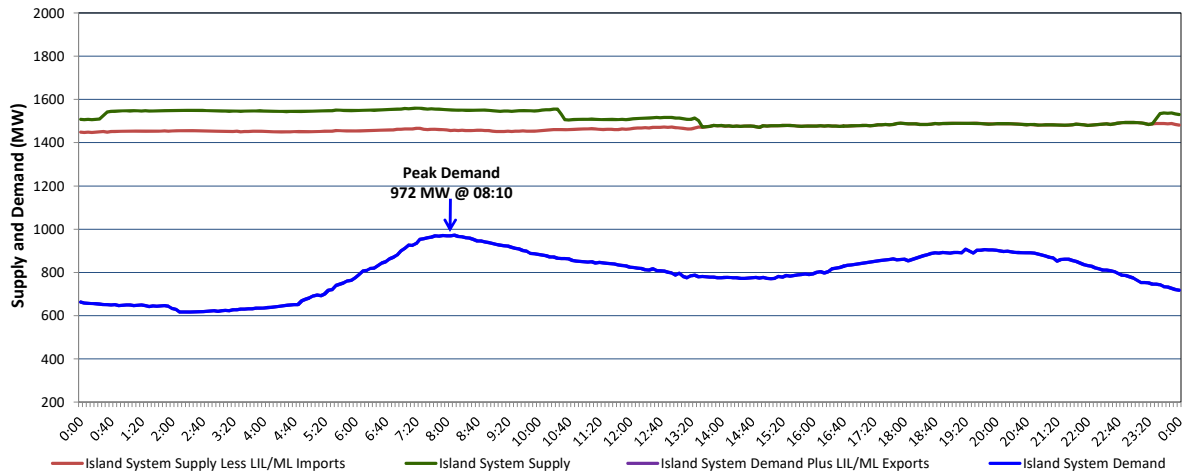


Newfoundland Labrador Hydro (NLH) Supply and Demand Status Report Filed Friday, October 18, 2019

Section 1 Island Interconnected System Supply, Demand & Exports Actual 24 Hour System Performance For Thursday, October 17, 2019



Supply Notes For October 17, 2019 ^{1,2}

- A** As of 0800 hours, July 29, 2019, Holyrood Unit 1 unavailable due to planned outage (170 MW).
- B** As of 1150 hours, August 18, 2019, Hinds Lake Unit unavailable due to planned outage (75 MW).
- C** As of 1300 hours, August 28, 2019, Stephenville Gas Turbine available at 25 MW (50 MW).
- D** As of 0801 hours, September 29, 2019, Hardwoods Gas Turbine unavailable due to planned outage (50 MW).
- E** As of 0830 hours, October 04, 2019, St. Anthony Diesel Plant available at 8.85 MW (9.7 MW).
- F** As of 1011 hours, October 04, 2019, Bay d'Espoir Unit 3 available at 70 MW (76.5 MW).
- G** As of 1215 hours, October 05, 2019, Upper Salmon Unit unavailable due to planned outage (84 MW).
- H** As of 1300 hours, October 14, 2019, Bay d'Espoir Unit 2 unavailable due to planned outage (76.5 MW).

Section 2 Island Interconnected Supply and Demand

Fri, Oct 18, 2019	Island System Outlook ³	Seven-Day Forecast	Temperature (°C)		Island System Daily Peak Demand (MW)	
			Morning	Evening	Forecast	Adjusted ⁷
Available Island System Supply: ⁵	1,515 MW	Friday, October 18, 2019	12	14	915	915
NLH Island Generation: ⁴	1,205 MW	Saturday, October 19, 2019	12	8	860	860
NLH Island Power Purchases: ⁶	105 MW	Sunday, October 20, 2019	7	6	955	955
Other Island Generation:	205 MW	Monday, October 21, 2019	6	6	990	990
ML/LIL Imports:	-	Tuesday, October 22, 2019	6	4	1,025	1,025
Current St. John's Temperature & Windchill:	10 N/A °C	Wednesday, October 23, 2019	6	6	1,005	1,005
7-Day Island Peak Demand Forecast:	1,025 MW	Thursday, October 24, 2019	7	8	960	960

Supply Notes For October 18, 2019 ³

- Notes:
1. Generation outages for running and corrective maintenance are included. These are not unusual for power system operations. They generally do not impact customer supply. The power system operators schedule outages to system equipment whenever possible to coincide with periods when customer demands are low and sufficient supply reserves are available. However, from time to time equipment outages are necessary and reserves may be impacted.
 2. Due to the Island system having no synchronous connections to the larger North American grid, when there is a sudden loss of large generating units there may be a requirement for some customer's load to be interrupted for short periods to bring generation output equal to customer demand. This automatic action of power system protection, referred to as under frequency load shedding (UFLS), is necessary to ensure the integrity and reliability of system equipment. Under frequency events have typically occurred 5 to 8 times per year on the Island Interconnected System and the resultant customer load interruptions are generally less than 30 minutes. With the activation of the Maritime Link frequency controller during the winter of 2018, UFLS events have occurred less frequently.
 3. As of 0800 Hours.
 4. Gross output including station service at Holyrood (24.5 MW) and improved NLH hydraulic output due to water levels (35 MW).
 5. Gross output from all Island sources (including Note 4).
 6. NLH Island Power Purchases include: CBPP Co-Gen, Nalcor Exploits, Rattle Brook, Star Lake, Wind Generation and capacity assistance (when applicable).
 7. Adjusted for curtailable load, market activities and the impact of voltage reduction when applicable.

Section 3 Island Peak Demand Information Previous Day Actual Peak and Current Day Forecast Peak

Thu, Oct 17, 2019	Actual Island Peak Demand ⁸	8:10	972 MW
Fri, Oct 18, 2019	Forecast Island Peak Demand		915 MW

- Notes: 8. Island Demand / LIL / ML Exports (where applicable) is supplied by NLH generation and purchases, plus generation owned and operated by Newfoundland Power and Corner Brook Pulp & Paper (Deer Lake Power, DLP).