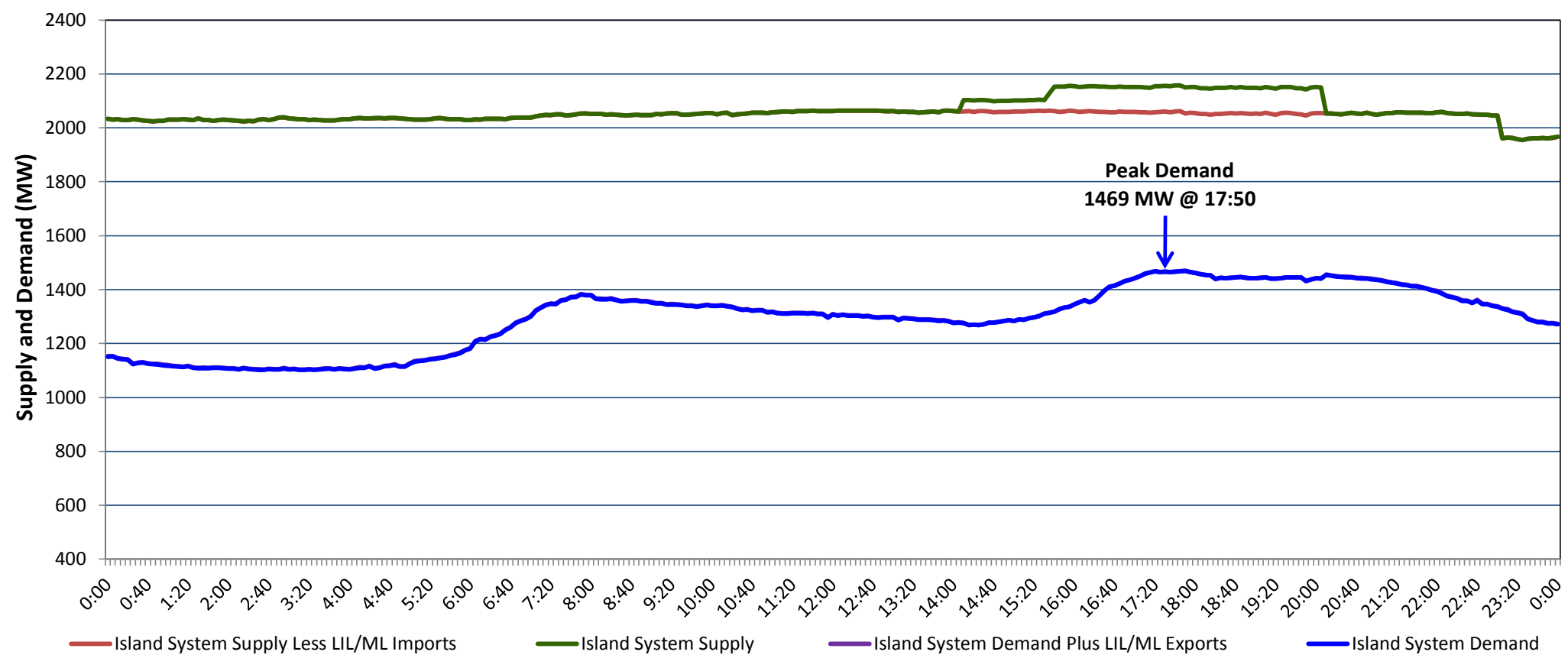


## Newfoundland Labrador Hydro (NLH) Supply and Demand Status Report Filed Friday, January 18, 2019

### Section 1 Island Interconnected System Supply, Demand & Exports Actual 24 Hour System Performance For Thursday, January 17, 2019



#### Supply Notes For January 17, 2019

1,2

A As of 0620 hours, January 10, 2019, Holyrood Unit 1 available at 162 MW (170 MW).

B At 2301 hours, January 17, 2019, Upper Salmon Unit unavailable (84 MW).

### Section 2 Island Interconnected Supply and Demand

Fri, Jan 18, 2019	Island System Outlook <sup>3</sup>	Seven-Day Forecast	Temperature (°C)		Island System Daily Peak Demand (MW)	
			Morning	Evening	Forecast	Adjusted <sup>7</sup>
Available Island System Supply: <sup>5</sup>	2,020 MW	Friday, January 18, 2019	-10	-8	1,625	1,520
NLH Island Generation: <sup>4</sup>	1,685 MW	Saturday, January 19, 2019	-2	-3	1,455	1,352
NLH Island Power Purchases: <sup>6</sup>	110 MW	Sunday, January 20, 2019	-11	-8	1,650	1,545
Other Island Generation:	225 MW	Monday, January 21, 2019	3	4	1,380	1,278
ML/LIL Imports:	- MW	Tuesday, January 22, 2019	-2	-4	1,525	1,421
Current St. John's Temperature & Windchill:	-11 °C	Wednesday, January 23, 2019	-4	-3	1,515	1,411
7-Day Island Peak Demand Forecast:	1,650 MW	Thursday, January 24, 2019	3	-5	1,525	1,421

#### Supply Notes For January 18, 2019

3

C At 0312 hours, January 18, 2019, Upper Salmon Unit available (84 MW).

- Notes:
1. Generation outages for running and corrective maintenance are included. These are not unusual for power system operations. They generally do not impact customer supply. The power system operators schedule outages to system equipment whenever possible to coincide with periods when customer demands are low and sufficient supply reserves are available. However, from time to time equipment outages are necessary and reserves may be impacted.
  2. Due to the Island system having no synchronous connections to the larger North American grid, when there is a sudden loss of large generating units there may be a requirement for some customer's load to be interrupted for short periods to bring generation output equal to customer demand. This automatic action of power system protection, referred to as under frequency load shedding (UFLS), is necessary to ensure the integrity and reliability of system equipment. Under frequency events have typically occurred 5 to 8 times per year on the Island Interconnected System and the resultant customer load interruptions are generally less than 30 minutes. With the activation of the Maritime Link frequency controller during the winter of 2018, UFLS events have occurred less frequently.
  3. As of 0800 Hours.
  4. Gross output including station service at Holyrood (24.5 MW) and improved NLH hydraulic output due to water levels (35 MW).
  5. Gross output from all Island sources (including Note 4).
  6. NLH Island Power Purchases include: CBPP Co-Gen, Nalcor Exploits, Rattle Brook, Star Lake, Wind Generation and capacity assistance (when applicable).
  7. Adjusted for curtailable load, market activities and the impact of voltage reduction when applicable.

### Section 3 Island Peak Demand Information Previous Day Actual Peak and Current Day Forecast Peak

Thu, Jan 17, 2019	Actual Island Peak Demand <sup>8</sup>	17:50	1,469 MW
Fri, Jan 18, 2019	Forecast Island Peak Demand		1,625 MW

Notes: 8. Island Demand / LIL / ML Exports (where applicable) is supplied by NLH generation and purchases, plus generation owned and operated by Newfoundland Power and Corner Brook Pulp & Paper (Deer Lake Power, DLP).