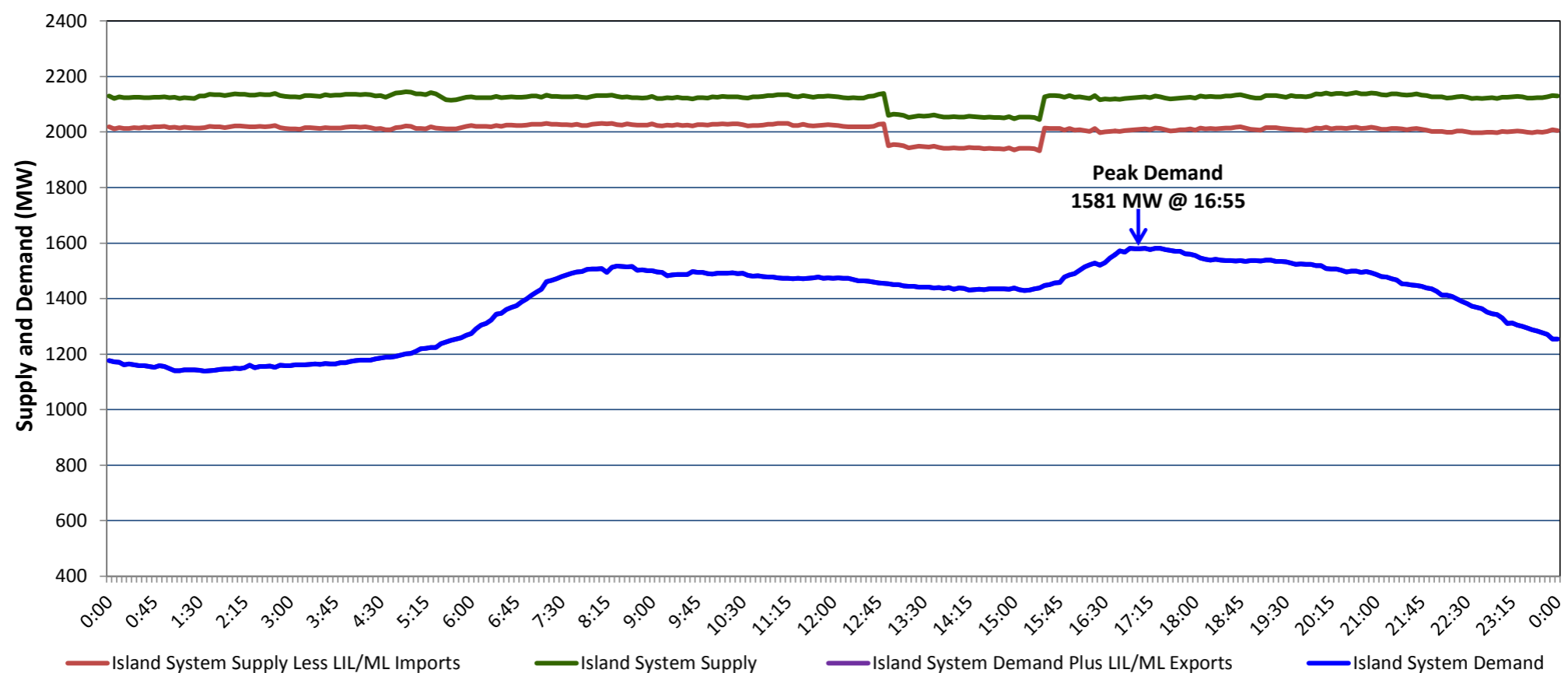


Newfoundland Labrador Hydro (NLH)
Supply and Demand Status Report Filed Wednesday, January 09, 2019

Section 1
Island Interconnected System Supply, Demand & Exports
Actual 24 Hour System Performance For Tuesday, January 08, 2019



Supply Notes For January 08, 2019

1,2

A As of 1615 hours, December 19, 2018, Holyrood Unit 1 available at 162 MW (170 MW).

B At 1254 hours, January 08, 2019, Hinds Lake Unit unavailable (75 MW).

C At 1527 hours, January 08, 2019, Hinds Lake Unit available (75 MW).

Section 2
Island Interconnected Supply and Demand

Wed, Jan 09, 2019	Island System Outlook ³		Seven-Day Forecast	Temperature (°C)		Island System Daily Peak Demand (MW)	
				Morning	Evening	Forecast	Adjusted ⁷
Available Island System Supply: ⁵	2,170	MW	Wednesday, January 09, 2019	-4	-4	1,485	1,382
NLH Island Generation: ⁴	1,685	MW	Thursday, January 10, 2019	0	2	1,395	1,293
NLH Island Power Purchases: ⁶	110	MW	Friday, January 11, 2019	0	-1	1,370	1,268
Other Island Generation:	210	MW	Saturday, January 12, 2019	-2	-3	1,430	1,327
ML/LIL Imports:	165	MW	Sunday, January 13, 2019	-6	-4	1,490	1,387
Current St. John's Temperature & Windchill:	-4 °C	-12 °C	Monday, January 14, 2019	-4	-5	1,505	1,402
7-Day Island Peak Demand Forecast:	1,545	MW	Tuesday, January 15, 2019	-4	-7	1,545	1,441

Supply Notes For January 09, 2019

3

- Notes:
1. Generation outages for running and corrective maintenance are included. These are not unusual for power system operations. They generally do not impact customer supply. The power system operators schedule outages to system equipment whenever possible to coincide with periods when customer demands are low and sufficient supply reserves are available. However, from time to time equipment outages are necessary and reserves may be impacted.
 2. Due to the Island system having no synchronous connections to the larger North American grid, when there is a sudden loss of large generating units there may be a requirement for some customer's load to be interrupted for short periods to bring generation output equal to customer demand. This automatic action of power system protection, referred to as under frequency load shedding (UFLS), is necessary to ensure the integrity and reliability of system equipment. Under frequency events have typically occurred 5 to 8 times per year on the Island Interconnected System and the resultant customer load interruptions are generally less than 30 minutes. With the activation of the Maritime Link frequency controller during the winter of 2018, UFLS events have occurred less frequently.
 3. As of 0800 Hours.
 4. Gross output including station service at Holyrood (24.5 MW) and improved NLH hydraulic output due to water levels (35 MW).
 5. Gross output from all Island sources (including Note 4).
 6. NLH Island Power Purchases include: CBPP Co-Gen, Nalcor Exploits, Rattle Brook, Star Lake, Wind Generation and capacity assistance (when applicable).
 7. Adjusted for curtailable load, market activities and the impact of voltage reduction when applicable.

Section 3
Island Peak Demand Information
Previous Day Actual Peak and Current Day Forecast Peak

Tue, Jan 08, 2019	Actual Island Peak Demand ⁸	16:55	1,581 MW
Wed, Jan 09, 2019	Forecast Island Peak Demand		1,485 MW

Notes: 8. Island Demand / LIL / ML Exports (where applicable) is supplied by NLH generation and purchases, plus generation owned and operated by Newfoundland Power and Corner Brook Pulp & Paper (Deer Lake Power, DLP).