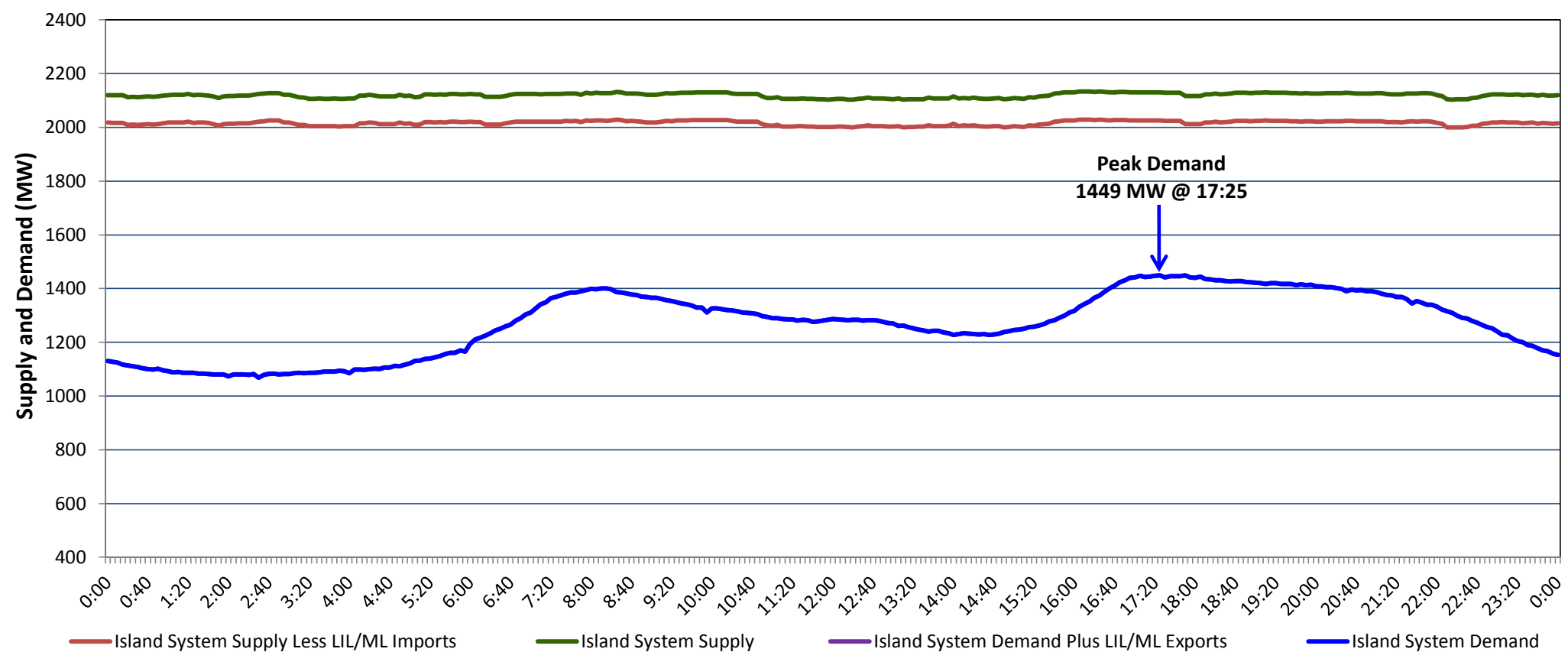


Newfoundland Labrador Hydro (NLH) Supply and Demand Status Report Filed Friday, December 21, 2018

Section 1 Island Interconnected System Supply, Demand & Exports Actual 24 Hour System Performance For Thursday, December 20, 2018



Supply Notes For December 20, 2018

1,2

A As of 1615 hours, December 19, 2018, Holyrood Unit 1 available at 162 MW (170 MW).

Section 2 Island Interconnected Supply and Demand

Fri, Dec 21, 2018	Island System Outlook ³			Seven-Day Forecast	Temperature (°C)		Island System Daily Peak Demand (MW)	
					Morning	Evening	Forecast	Adjusted ⁷
Available Island System Supply: ⁵	2,104	MW		Friday, December 21, 2018	-3	-1	1,390	1,288
NLH Island Generation: ⁴	1,685	MW		Saturday, December 22, 2018	-2	2	1,330	1,229
NLH Island Power Purchases: ⁶	105	MW		Sunday, December 23, 2018	3	1	1,315	1,214
Other Island Generation:	210	MW		Monday, December 24, 2018	-2	-3	1,505	1,402
ML/LIL Imports:	104	MW		Tuesday, December 25, 2018	-3	-4	1,485	1,382
Current St. John's Temperature & Windchill:	-3 °C	-11 °C		Wednesday, December 26, 2018	-7	-7	1,540	1,436
7-Day Island Peak Demand Forecast:	1,610	MW		Thursday, December 27, 2018	-7	-8	1,610	1,505

Supply Notes For December 21, 2018

3

- Notes:
1. Generation outages for running and corrective maintenance are included. These are not unusual for power system operations. They generally do not impact customer supply. The power system operators schedule outages to system equipment whenever possible to coincide with periods when customer demands are low and sufficient supply reserves are available. However, from time to time equipment outages are necessary and reserves may be impacted.
 2. Due to the Island system having no synchronous connections to the larger North American grid, when there is a sudden loss of large generating units there may be a requirement for some customer's load to be interrupted for short periods to bring generation output equal to customer demand. This automatic action of power system protection, referred to as under frequency load shedding (UFLS), is necessary to ensure the integrity and reliability of system equipment. Under frequency events have typically occurred 5 to 8 times per year on the Island Interconnected System and the resultant customer load interruptions are generally less than 30 minutes. With the activation of the Maritime Link frequency controller during the winter of 2018, UFLS events have occurred less frequently.
 3. As of 0800 Hours.
 4. Gross output including station service at Holyrood (24.5 MW) and improved NLH hydraulic output due to water levels (35 MW).
 5. Gross output from all Island sources (including Note 4).
 6. NLH Island Power Purchases include: CBPP Co-Gen, Nalcor Exploits, Rattle Brook, Star Lake, Wind Generation and capacity assistance (when applicable).
 7. Adjusted for curtailable load, market activities and the impact of voltage reduction when applicable.

Section 3 Island Peak Demand Information Previous Day Actual Peak and Current Day Forecast Peak

Thu, Dec 20, 2018	Actual Island Peak Demand ⁸	17:25	1,449 MW
Fri, Dec 21, 2018	Forecast Island Peak Demand		1,390 MW

Notes: 8. Island Demand / LIL / ML Exports (where applicable) is supplied by NLH generation and purchases, plus generation owned and operated by Newfoundland Power and Corner Brook Pulp & Paper (Deer Lake Power, DLP).