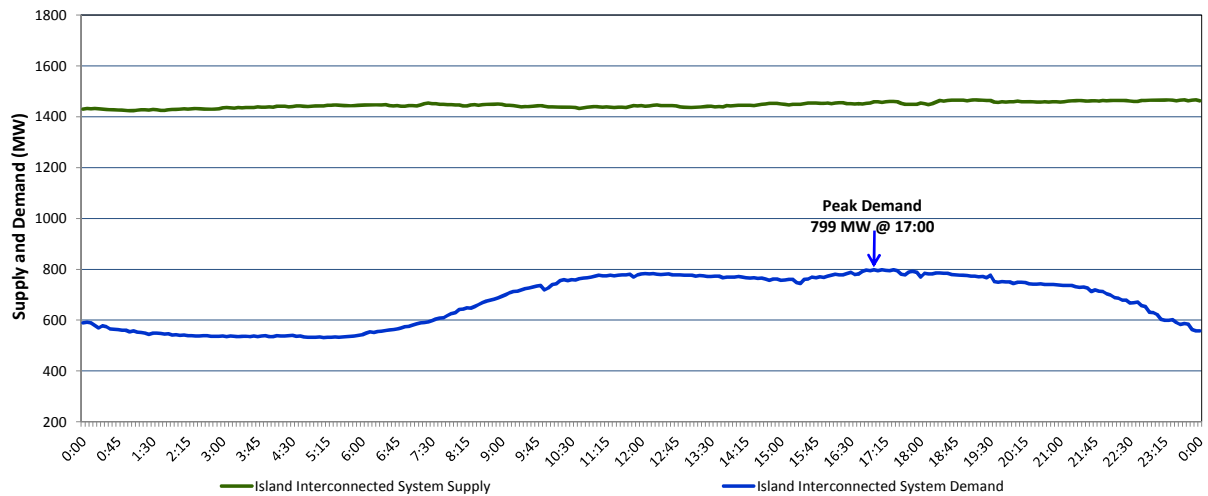


Newfoundland Labrador Hydro (NLH) Supply and Demand Status Report Filed Tuesday, June 27, 2017

Section 1 Island Interconnected System Supply and Demand Actual 24 Hour System Performance For Saturday, June 24, 2017



Supply Notes For June 24, 2017

1,2

- A As of 2003 hours, May 03, 2017, Bay d'Espoir Unit 3 unavailable due to planned outage (76.5 MW).
- B As of 1510 hours, May 07, 2017, Bay d'Espoir Unit 4 unavailable due to planned outage (76.5 MW).
- C As of 1544 hours, May 19, 2017, Hawke's Bay Diesel Plant available at 2.5 MW (5 MW).
- D As of 1147 hours, May 31, 2017, Holyrood Unit 3 unavailable due to planned outage 147 MW (150 MW).
- E As of 1424 hours, June 18, 2017, Granite Canal Unit unavailable due to planned outage (40 MW).
- F As of 1858 hours, June 22, 2017, Stephenville Gas Turbine available at 25 MW (50 MW).
- G As of 0938 hours, June 23, 2017, Holyrood Unit 1 unavailable due to planned outage 120 MW (170 MW).
- H As of 1141 hours, June 23, 2017, Holyrood Unit 2 available at 130 MW (170 MW).

Section 2 Island Interconnected Supply and Demand

Sun, Jun 25, 2017	Island System Outlook ³	Seven-Day Forecast	Temperature (°C)		Island System Daily Peak Demand (MW) Forecast
			Morning	Evening	
Available Island System Supply: ⁵	1,435 MW	Sunday, June 25, 2017	15	16	740
NLH Generation: ⁴	1,110 MW	Monday, June 26, 2017	15	17	760
NLH Power Purchases: ⁶	120 MW	Tuesday, June 27, 2017	14	17	765
Other Island Generation:	205 MW	Wednesday, June 28, 2017	12	15	825
Current St. John's Temperature:	15 °C	Thursday, June 29, 2017	14	15	785
Current St. John's Windchill:	N/A °C	Friday, June 30, 2017	14	15	785
7-Day Island Peak Demand Forecast:	825 MW	Saturday, July 01, 2017	14	13	755

Supply Notes For June 25, 2017

3

- Notes:
1. Generation outages for running and corrective maintenance are included. These are not unusual for power system operations. They generally do not impact customer supply. The power system operators schedule outages to system equipment whenever possible to coincide with periods when customer demands are low and sufficient supply reserves are available. However, from time to time equipment outages are necessary and reserves may be impacted.
 2. Due to the Island Interconnected System being isolated from the larger North American grid, when there is a sudden loss of large generating units some customer's load must be interrupted for short periods to bring generation output equal to customer demand. This automatic action of power system protection, referred to as under frequency load shedding, is necessary to ensure the integrity and reliability of system equipment. Under frequency events typically occur 5 to 8 times per year on the Island Interconnected System and the resultant customer load interruptions are generally less than 30 minutes.
 3. As of 0800 Hours.
 4. Gross output including station service at Holyrood (24.5 MW) and improved NLH hydraulic output due to water levels (35 MW).
 5. Gross output from all Island sources (including Note 4).
 6. NLH Power Purchases include: CBPP Co-Gen, Nalcor Exploits, Rattle Brook, Star Lake, Vale capacity assistance (when applicable), and Wind Generation.

Section 3 Island Peak Demand Information Previous Day Actual Peak and Current Day Forecast Peak

Sat, Jun 24, 2017	Actual Island Peak Demand ⁸	17:00	799 MW
Sun, Jun 25, 2017	Forecast Island Peak Demand		740 MW

- Notes: 8. Island Demand is supplied by NLH generation and purchases, plus generation owned and operated by Newfoundland Power and Corner Brook Pulp & Paper (Deer Lake Power, DLP).