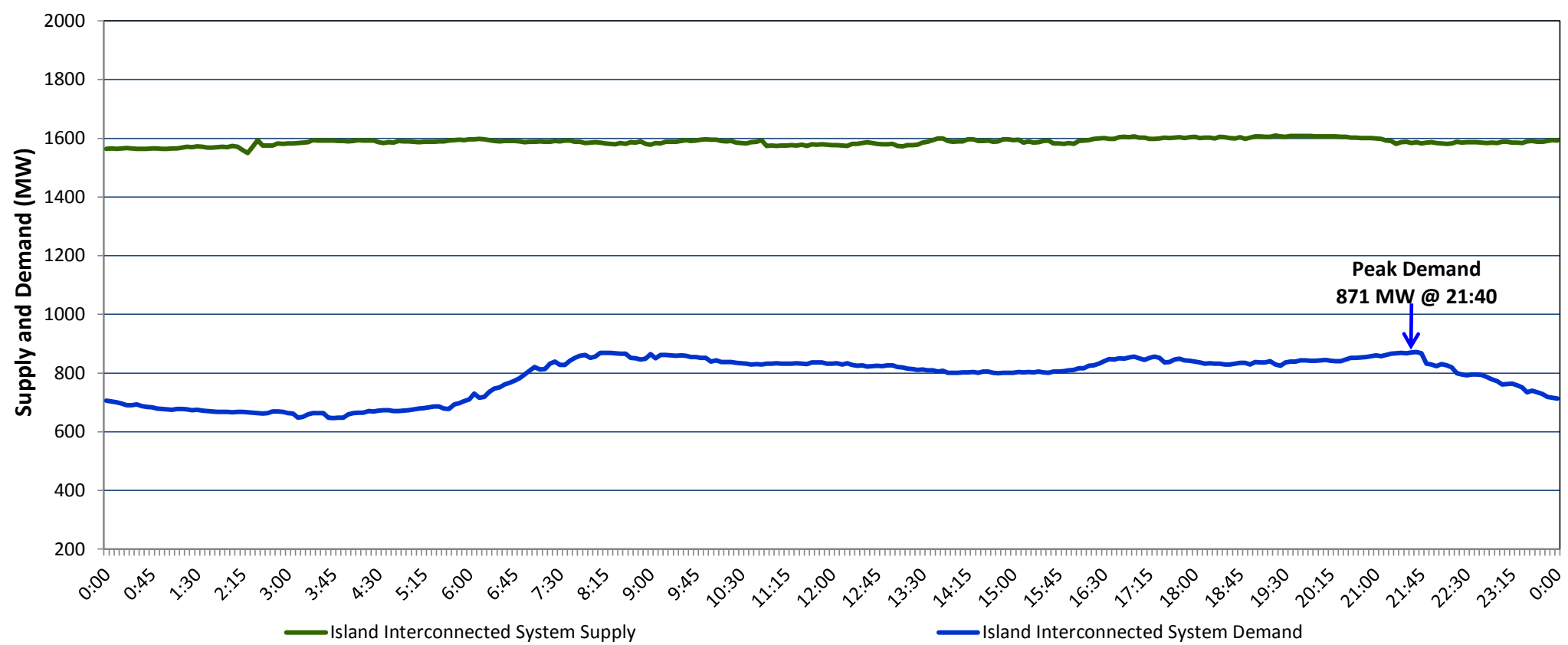


**Newfoundland Labrador Hydro (NLH)  
Supply and Demand Status Report Filed Thursday, June 15, 2017**

**Section 1  
Island Interconnected System Supply and Demand  
Actual 24 Hour System Performance For Wednesday, June 14, 2017**



**Supply Notes For June 14, 2017**

- 1,2
- A As of 2003 hours, May 03, 2017, Bay d'Espoir Unit 3 unavailable due to planned outage (76.5 MW).
  - B As of 1510 hours, May 07, 2017, Bay d'Espoir Unit 4 unavailable due to planned outage (76.5 MW).
  - C As of 1544 hours, May 19, 2017, Hawke's Bay Diesel Plant available at 2.5 MW (5 MW).
  - D As of 1147 hours, May 31, 2017, Holyrood Unit 3 unavailable due to planned outage 147 MW (150 MW).
  - E As of 1730 hours, May 31, 2017, Stephenville Gas Turbine available at 25 MW (50 MW).
  - F As of 1232 hours, June 08, 2017, Holyrood Unit 1 available at 94 MW (170 MW).
  - G As of 1400 hours, June 08, 2017, St. Anthony Diesel Plant available at 8.7 MW (9.7 MW).
  - H As of 1428 hours, June 11, 2017, Holyrood Unit 2 available at 165 MW (170 MW).

**Section 2  
Island Interconnected Supply and Demand**

Thu, Jun 15, 2017	Island System Outlook <sup>3</sup>	Seven-Day Forecast	Temperature (°C)		Island System Daily Peak Demand (MW) Forecast
			Morning	Evening	
Available Island System Supply: <sup>5</sup>	1,590 MW	Thursday, June 15, 2017	4	6	1,000
NLH Generation: <sup>4</sup>	1,280 MW	Friday, June 16, 2017	6	4	975
NLH Power Purchases: <sup>6</sup>	105 MW	Saturday, June 17, 2017	11	11	780
Other Island Generation:	205 MW	Sunday, June 18, 2017	12	14	790
Current St. John's Temperature:	4 °C	Monday, June 19, 2017	15	14	800
Current St. John's Windchill:	N/A °C	Tuesday, June 20, 2017	16	18	800
7-Day Island Peak Demand Forecast:	1,000 MW	Wednesday, June 21, 2017	19	16	795

**Supply Notes For June 15, 2017**

- 3
- Notes:
1. Generation outages for running and corrective maintenance are included. These are not unusual for power system operations. They generally do not impact customer supply. The power system operators schedule outages to system equipment whenever possible to coincide with periods when customer demands are low and sufficient supply reserves are available. However, from time to time equipment outages are necessary and reserves may be impacted.
  2. Due to the Island Interconnected System being isolated from the larger North American grid, when there is a sudden loss of large generating units some customer's load must be interrupted for short periods to bring generation output equal to customer demand. This automatic action of power system protection, referred to as under frequency load shedding, is necessary to ensure the integrity and reliability of system equipment. Under frequency events typically occur 5 to 8 times per year on the Island Interconnected System and the resultant customer load interruptions are generally less than 30 minutes.
  3. As of 0800 Hours.
  4. Gross output including station service at Holyrood (24.5 MW) and improved NLH hydraulic output due to water levels (35 MW).
  5. Gross output from all Island sources (including Note 4).
  6. NLH Power Purchases include: CBPP Co-Gen, Nalcor Exploits, Rattle Brook, Star Lake, Vale capacity assistance (when applicable), and Wind Generation.

**Section 3  
Island Peak Demand Information  
Previous Day Actual Peak and Current Day Forecast Peak**

Wed, Jun 14, 2017	Actual Island Peak Demand <sup>8</sup>	21:40	871 MW
Thu, Jun 15, 2017	Forecast Island Peak Demand		1,000 MW

- Notes: 8. Island Demand is supplied by NLH generation and purchases, plus generation owned and operated by Newfoundland Power and Corner Brook Pulp & Paper (Deer Lake Power, DLP).