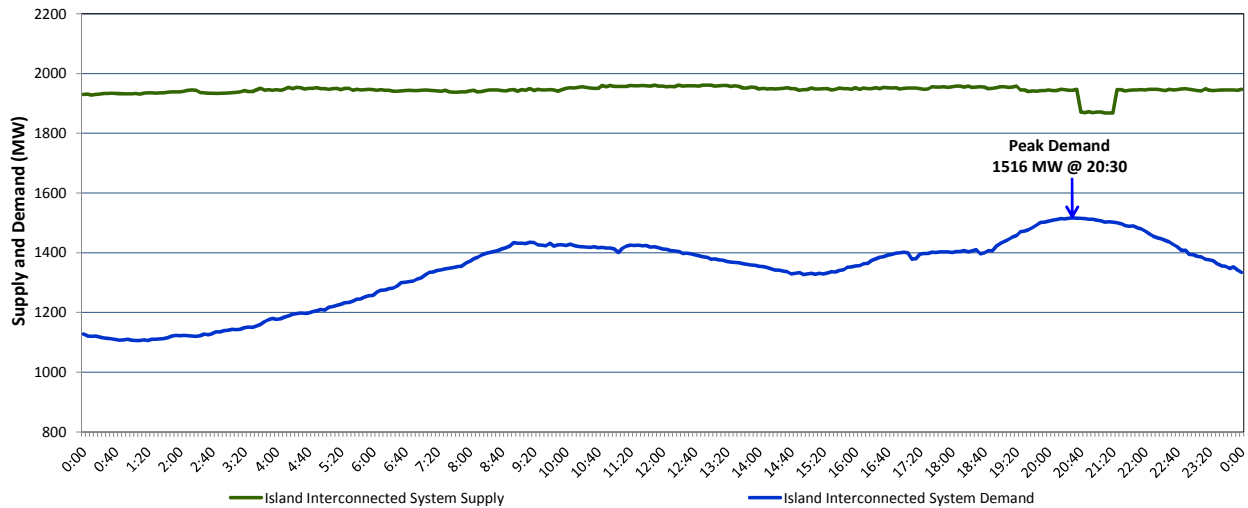


Newfoundland Labrador Hydro (NLH) Supply and Demand Status Report Filed Monday, March 27, 2017

Section 1 Island Interconnected System Supply and Demand Actual 24 Hour System Performance For Sunday, March 26, 2017



Supply Notes For March 26, 2017

- 1,2
- A As of 1600 hours, March 21, 2017, Holyrood Unit 1 available at 134 MW (170 MW).
 - B As of 1600 hours, March 21, 2017, Holyrood Unit 2 available at 134 MW (170 MW).
 - C As of 1910 hours, March 22, 2017, Holyrood Unit 3 available at 130 MW (150 MW).
 - D As of 1458 hours, March 23, 2017, Stephenville Gas Turbine available at 25 MW (50 MW).
 - E At 1925 hours, March 26, 2017, Paradise River Unit unavailable (8 MW).
 - F At 2040 hours, March 26, 2017, Hinds Lake Unit unavailable (75 MW).
 - G At 2122 hours, March 26, 2017, Hinds Lake Unit available (75 MW).

Section 2 Island Interconnected Supply and Demand

Mon, Mar 27, 2017	Island System Outlook ³	Seven-Day Forecast	Temperature (°C)		Island System Daily Peak Demand (MW)	
			Morning	Evening	Forecast	Adjusted ⁷
Available Island System Supply: ⁵	1,950 MW	Monday, March 27, 2017	-12	-8	1,680	1,569
NLH Generation: ⁴	1,570 MW	Tuesday, March 28, 2017	-7	-2	1,530	1,421
NLH Power Purchases: ⁶	165 MW	Wednesday, March 29, 2017	-1	0	1,305	1,199
Other Island Generation:	215 MW	Thursday, March 30, 2017	-1	-1	1,325	1,219
Current St. John's Temperature:	-13 °C	Friday, March 31, 2017	1	-1	1,360	1,253
Current St. John's Windchill:	-26 °C	Saturday, April 01, 2017	-2	-3	1,290	1,279
7-Day Island Peak Demand Forecast:	1,680 MW	Sunday, April 02, 2017	-6	-5	1,325	1,314

Supply Notes For March 27, 2017

- 3
- Notes:
1. Generation outages for running and corrective maintenance are included. These are not unusual for power system operations. They generally do not impact customer supply. The power system operators schedule outages to system equipment whenever possible to coincide with periods when customer demands are low and sufficient supply reserves are available. However, from time to time equipment outages are necessary and reserves may be impacted.
 2. Due to the Island Interconnected System being isolated from the larger North American grid, when there is a sudden loss of large generating units some customer's load must be interrupted for short periods to bring generation output equal to customer demand. This automatic action of power system protection, referred to as under frequency load shedding, is necessary to ensure the integrity and reliability of system equipment. Under frequency events typically occur 5 to 8 times per year on the Island Interconnected System and the resultant customer load interruptions are generally less than 30 minutes.
 3. As of 0800 Hours.
 4. Gross output including station service at Holyrood (24.5 MW) and improved NLH hydraulic output due to water levels (35 MW).
 5. Gross output from all Island sources (including Note 4).
 6. NLH Power Purchases include: CBPP Co-Gen, Nalcor Exploits, Rattle Brook, Star Lake, Vale capacity assistance (when applicable), and Wind Generation.
 7. Adjusted for CBP&P, Praxair and Vale interruptible load as well as the impact of voltage reduction, when applicable.

Section 3 Island Peak Demand Information Previous Day Actual Peak and Current Day Forecast Peak

Sun, Mar 26, 2017	Actual Island Peak Demand ⁸	20:30	1,516 MW
Mon, Mar 27, 2017	Forecast Island Peak Demand		1,680 MW

- Notes: 8. Island Demand is supplied by NLH generation and purchases, plus generation owned and operated by Newfoundland Power and Corner Brook Pulp & Paper (Deer Lake Power, DLP).