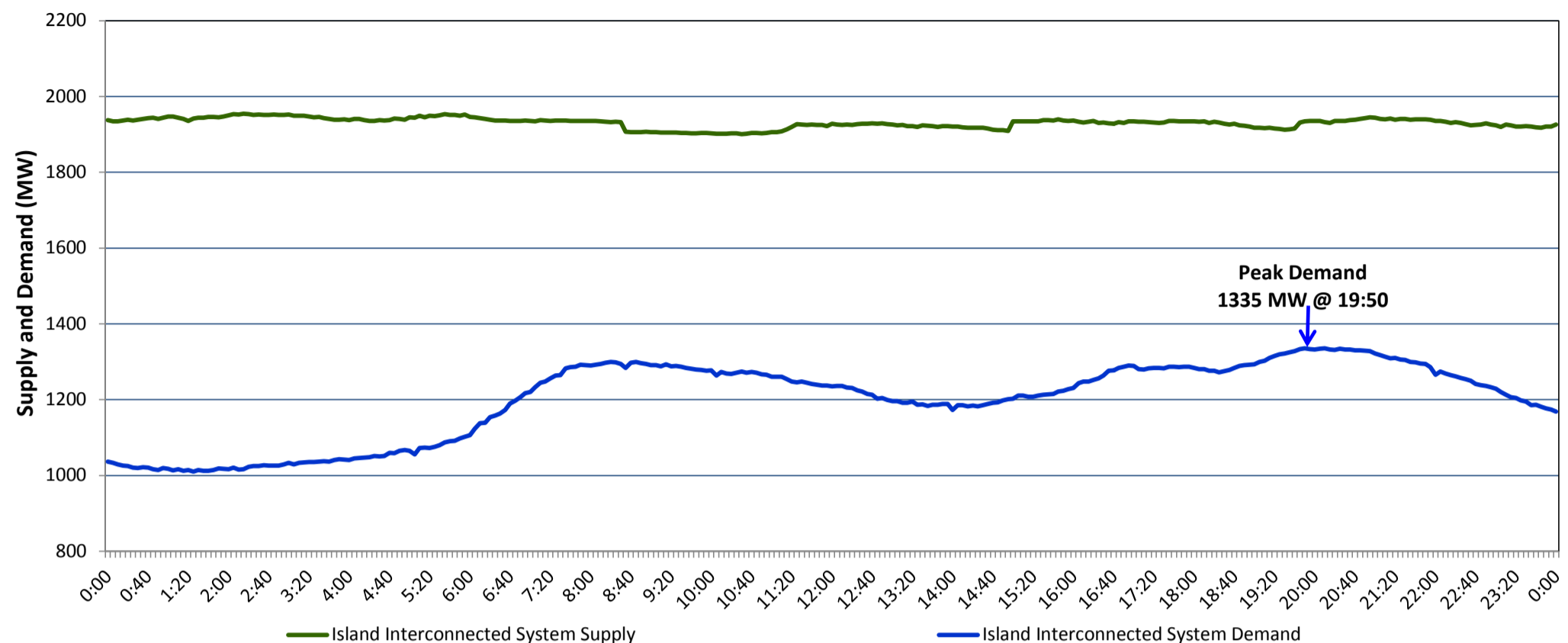


## Newfoundland Labrador Hydro (NLH) Supply and Demand Status Report Filed Friday, March 24, 2017

### Section 1 Island Interconnected System Supply and Demand Actual 24 Hour System Performance For Thursday, March 23, 2017



#### Supply Notes For March 23, 2017

1,2

A As of 1600 hours, March 21, 2017, Holyrood Unit 1 available at 134 MW (170 MW).

B As of 1600 hours, March 21, 2017, Holyrood Unit 2 available at 134 MW (170 MW).

C As of 1910 hours, March 22, 2017, Holyrood Unit 3 available at 130 MW (150 MW).

D At 0831 hours, March 23, 2017, Stephenville Gas Turbine unavailable 25 MW (50 MW).

E At 1458 hours, March 23, 2017, Stephenville Gas Turbine available at 25 MW (50 MW).

### Section 2 Island Interconnected Supply and Demand

| Fri, Mar 24, 2017                            | Island System Outlook <sup>3</sup> |    | Seven-Day Forecast        |     | Temperature (°C) |         | Island System Daily Peak Demand (MW) |                       |
|--|------------------------------------|----|---------------------------|-----|------------------|---------|--------------------------------------|-----------------------|
|  |                                    |    |                           |     | Morning          | Evening | Forecast                             | Adjusted <sup>7</sup> |
| Available Island System Supply: <sup>5</sup> | 1,910                              | MW | Friday, March 24, 2017    | -7  | -9               | 1,545   | 1,436                                |                       |
| NLH Generation: <sup>4</sup>                 | 1,575                              | MW | Saturday, March 25, 2017  | -5  | -1               | 1,385   | 1,278                                |                       |
| NLH Power Purchases: <sup>6</sup>            | 115                                | MW | Sunday, March 26, 2017    | -12 | -10              | 1,525   | 1,416                                |                       |
| Other Island Generation:                     | 220                                | MW | Monday, March 27, 2017    | -11 | -7               | 1,595   | 1,485                                |                       |
| Current St. John's Temperature:              | -8                                 | °C | Tuesday, March 28, 2017   | -5  | -2               | 1,440   | 1,332                                |                       |
| Current St. John's Windchill:                | -15                                | °C | Wednesday, March 29, 2017 | -1  | -2               | 1,310   | 1,204                                |                       |
| 7-Day Island Peak Demand Forecast:           | 1,595                              | MW | Thursday, March 30, 2017  | -2  | -2               | 1,355   | 1,248                                |                       |

#### Supply Notes For March 24, 2017

3

#### Notes:

1. Generation outages for running and corrective maintenance are included. These are not unusual for power system operations. They generally do not impact customer supply. The power system operators schedule outages to system equipment whenever possible to coincide with periods when customer demands are low and sufficient supply reserves are available. However, from time to time equipment outages are necessary and reserves may be impacted.
2. Due to the Island Interconnected System being isolated from the larger North American grid, when there is a sudden loss of large generating units some customer's load must be interrupted for short periods to bring generation output equal to customer demand. This automatic action of power system protection, referred to as under frequency load shedding, is necessary to ensure the integrity and reliability of system equipment. Under frequency events typically occur 5 to 8 times per year on the Island Interconnected System and the resultant customer load interruptions are generally less than 30 minutes.
3. As of 0800 Hours.
4. Gross output including station service at Holyrood (24.5 MW) and improved NLH hydraulic output due to water levels (35 MW).
5. Gross output from all Island sources (including Note 4).
6. NLH Power Purchases include: CBPP Co-Gen, Nalcor Exploits, Rattle Brook, Star Lake, Vale capacity assistance (when applicable), and Wind Generation.
7. Adjusted for CBP&P, Praxair and Vale interruptible load as well as the impact of voltage reduction, when applicable.

### Section 3 Island Peak Demand Information Previous Day Actual Peak and Current Day Forecast Peak

|                   |  |       |          |
|-------------------|--|-------|----------|
| Thu, Mar 23, 2017 | Actual Island Peak Demand <sup>8</sup> | 19:50 | 1,335 MW |
| Fri, Mar 24, 2017 | Forecast Island Peak Demand            |       | 1,545 MW |

Notes: 8. Island Demand is supplied by NLH generation and purchases, plus generation owned and operated by Newfoundland Power and Corner Brook Pulp & Paper (Deer Lake Power, DLP).