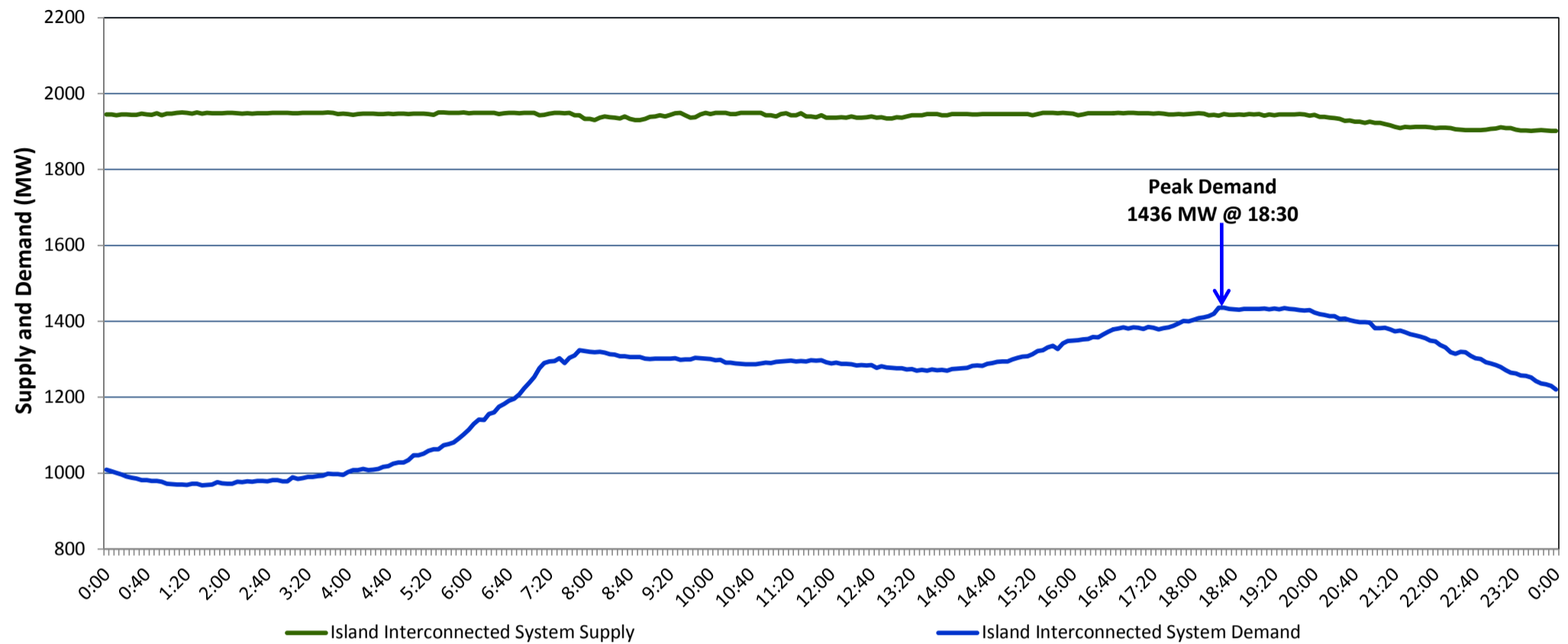


**Newfoundland Labrador Hydro (NLH)
Supply and Demand Status Report Filed Tuesday, March 14, 2017**

**Section 1
Island Interconnected System Supply and Demand
Actual 24 Hour System Performance For Friday, March 10, 2017**



Supply Notes For March 10, 2017

1,2

- A As of 1238 hours, February 19, 2017, Hardwoods Gas Turbine available at 25 MW (50 MW).
- B As of 0700 hours, March 06, 2017, Holyrood Unit 2 available at 140 MW (170 MW).
- C As of 1700 hours, March 07, 2017, Stephenville Gas Turbine available at 38 MW (50 MW).
- D As of 1529 hours, March 09, 2017, Holyrood Unit 1 available 140 MW (170 MW).

**Section 2
Island Interconnected Supply and Demand**

Sat, Mar 11, 2017	Island System Outlook ³	Seven-Day Forecast	Temperature (°C)		Island System Daily Peak Demand (MW)	
			Morning	Evening	Forecast	Adjusted ⁷
Available Island System Supply: ⁵	1,915 MW	Saturday, March 11, 2017	-2	-6	1,620	1,510
NLH Generation: ⁴	1,595 MW	Sunday, March 12, 2017	-8	-8	1,525	1,416
NLH Power Purchases: ⁶	110 MW	Monday, March 13, 2017	-4	-3	1,380	1,273
Other Island Generation:	210 MW	Tuesday, March 14, 2017	-6	-4	1,470	1,362
Current St. John's Temperature:	-4 °C	Wednesday, March 15, 2017	-3	4	1,450	1,342
Current St. John's Windchill:	-13 °C	Thursday, March 16, 2017	1	0	1,295	1,189
7-Day Island Peak Demand Forecast:	1,620 MW	Friday, March 17, 2017	1	-1	1,265	1,159

Supply Notes For March 11, 2017

3

- Notes:
1. Generation outages for running and corrective maintenance are included. These are not unusual for power system operations. They generally do not impact customer supply. The power system operators schedule outages to system equipment whenever possible to coincide with periods when customer demands are low and sufficient supply reserves are available. However, from time to time equipment outages are necessary and reserves may be impacted.
 2. Due to the Island Interconnected System being isolated from the larger North American grid, when there is a sudden loss of large generating units some customer's load must be interrupted for short periods to bring generation output equal to customer demand. This automatic action of power system protection, referred to as under frequency load shedding, is necessary to ensure the integrity and reliability of system equipment. Under frequency events typically occur 5 to 8 times per year on the Island Interconnected System and the resultant customer load interruptions are generally less than 30 minutes.
 3. As of 0800 Hours.
 4. Gross output including station service at Holyrood (24.5 MW) and improved NLH hydraulic output due to water levels (35 MW).
 5. Gross output from all Island sources (including Note 4).
 6. NLH Power Purchases include: CBPP Co-Gen, Nalcor Exploits, Rattle Brook, Star Lake, Vale capacity assistance (when applicable), and Wind Generation.
 7. Adjusted for CBP&P, Praxair and Vale interruptible load as well as the impact of voltage reduction, when applicable.

**Section 3
Island Peak Demand Information
Previous Day Actual Peak and Current Day Forecast Peak**

Fri, Mar 10, 2017	Actual Island Peak Demand ⁸	18:30	1,436 MW
Sat, Mar 11, 2017	Forecast Island Peak Demand		1,620 MW

- Notes: 8. Island Demand is supplied by NLH generation and purchases, plus generation owned and operated by Newfoundland Power and Corner Brook Pulp & Paper (Deer Lake Power, DLP).