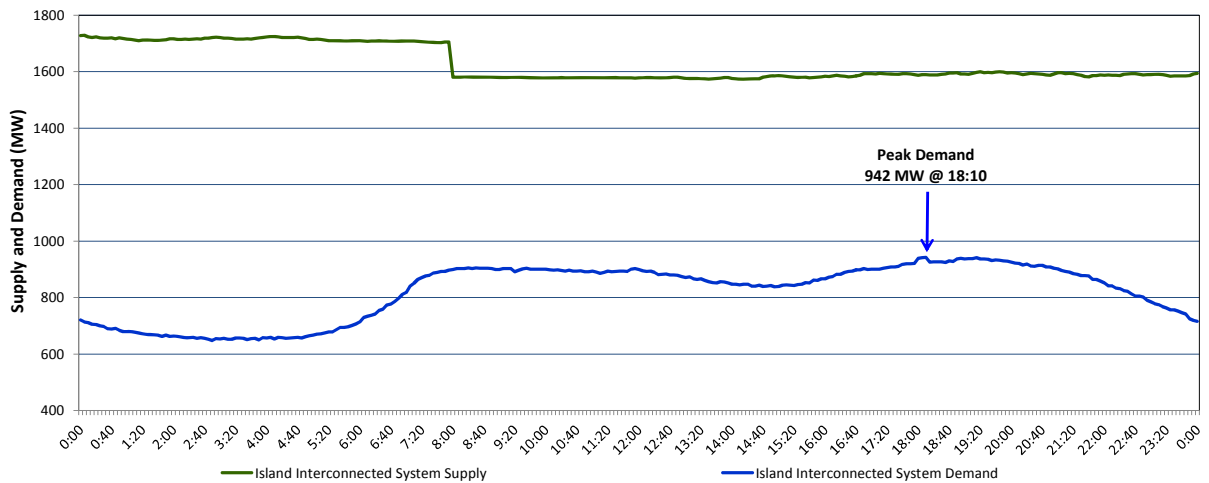


Newfoundland Labrador Hydro (NLH) Supply and Demand Status Report Filed Friday, November 04, 2016

Section 1 Island Interconnected System Supply and Demand Actual 24 Hour System Performance For Thursday, November 03, 2016



Supply Notes For November 03, 2016

- A** As of 1956 hours, January 14, 2016, Nalcor Exploits Grand Falls Unit 7 unavailable. No net impact to the Island Interconnected System.
- B** As of 1526 hours, March 26, 2016, Stephenville Gas Turbine End A unavailable (25 MW).
- C** As of 1316 hours, July 15, 2016, Nalcor Exploits Grand Falls Unit 4 unavailable. Net impact to the Island Interconnected System is 7 MW.
- D** As of 1719 hours, September 09, 2016, Nalcor Exploits Bishop's Falls plant units 7 and 9 unavailable. No net impact to the Island Interconnected System.
- E** As of 0717 hours, September 14, 2016, Bay d'Espoir Unit 1 unavailable (76.5 MW).
- F** As of 0717 hours, September 14, 2016, Bay d'Espoir Unit 2 unavailable (76.5 MW).
- G** As of 2132 hours, October 10, 2016, Nalcor Exploits Bishop's Falls plant units 3,4,5,6 and 8 unavailable. Net impact to the Island Interconnected System is 11 MW.
- H** As of 2116 hours, October 26, 2016, Hardwoods Gas Turbine derated to 38 MW (50 MW).
- I** As of 1032 hours, October 31, 2016, Hinds Lake Unit unavailable (75 MW).
- J** At 0800 hours, November 03, 2016, Holyrood Combustion Turbine unavailable (123.5 MW).

Section 2 Island Interconnected Supply and Demand

Fri, Nov 04, 2016		Island System Outlook ³	Seven-Day Forecast	Temperature (°C)		Island System Daily Peak Demand (MW)	
				Morning	Evening		
Available Island System Supply: ⁵	1,580	MW	Friday, November 04, 2016	6	7	1,000	988
NLH Generation: ⁴	1,305	MW	Saturday, November 05, 2016	6	4	1,065	1,053
NLH Power Purchases: ⁶	85	MW	Sunday, November 06, 2016	3	0	1,170	1,156
Other Island Generation:	190	MW	Monday, November 07, 2016	0	1	1,215	1,201
Current St. John's Temperature:	5	°C	Tuesday, November 08, 2016	1	1	1,190	1,176
Current St. John's Windchill:	N/A	°C	Wednesday, November 09, 2016	1	3	1,180	1,166
7-Day Island Peak Demand Forecast:	1,255	MW	Thursday, November 10, 2016	0	3	1,255	1,240

Supply Notes For November 04, 2016

- Notes:**
- Generation outages for running and corrective maintenance are included. These are not unusual for power system operations. They generally do not impact customer supply. The power system operators schedule outages to system equipment whenever possible to coincide with periods when customer demands are low and sufficient supply reserves are available. However, from time to time equipment outages are necessary and reserves may be impacted.
 - Due to the Island Interconnected System being isolated from the larger North American grid, when there is a sudden loss of large generating units some customer's load must be interrupted for short periods to bring generation output equal to customer demand. This automatic action of power system protection, referred to as under frequency load shedding, is necessary to ensure the integrity and reliability of system equipment. Under frequency events typically occur 5 to 8 times per year on the Island Interconnected System and the resultant customer load interruptions are generally less than 30 minutes.
 - As of 0800 Hours.
 - Gross output including station service at Holyrood (24.5 MW) and improved NLH hydraulic output due to water levels (35 MW).
 - Gross output from all Island sources (including Note 4).
 - NLH Power Purchases include: CBPP Co-Gen, Nalcor Exploits, Rattle Brook, Star Lake, Vale capacity assistance (when applicable), and Wind Generation.
 - Adjusted for CBP&P interruptible load and the impact of voltage reduction, when applicable.

Section 3 Island Peak Demand Information Previous Day Actual Peak and Current Day Forecast Peak

Thu, Nov 03, 2016	Actual Island Peak Demand ⁸	18:10	942 MW
Fri, Nov 04, 2016	Forecast Island Peak Demand		1,000 MW

- Notes:** 8. Island Demand is supplied by NLH generation and purchases, plus generation owned and operated by Newfoundland Power and Corner Brook Pulp & Paper (Deer Lake Power, DLP).