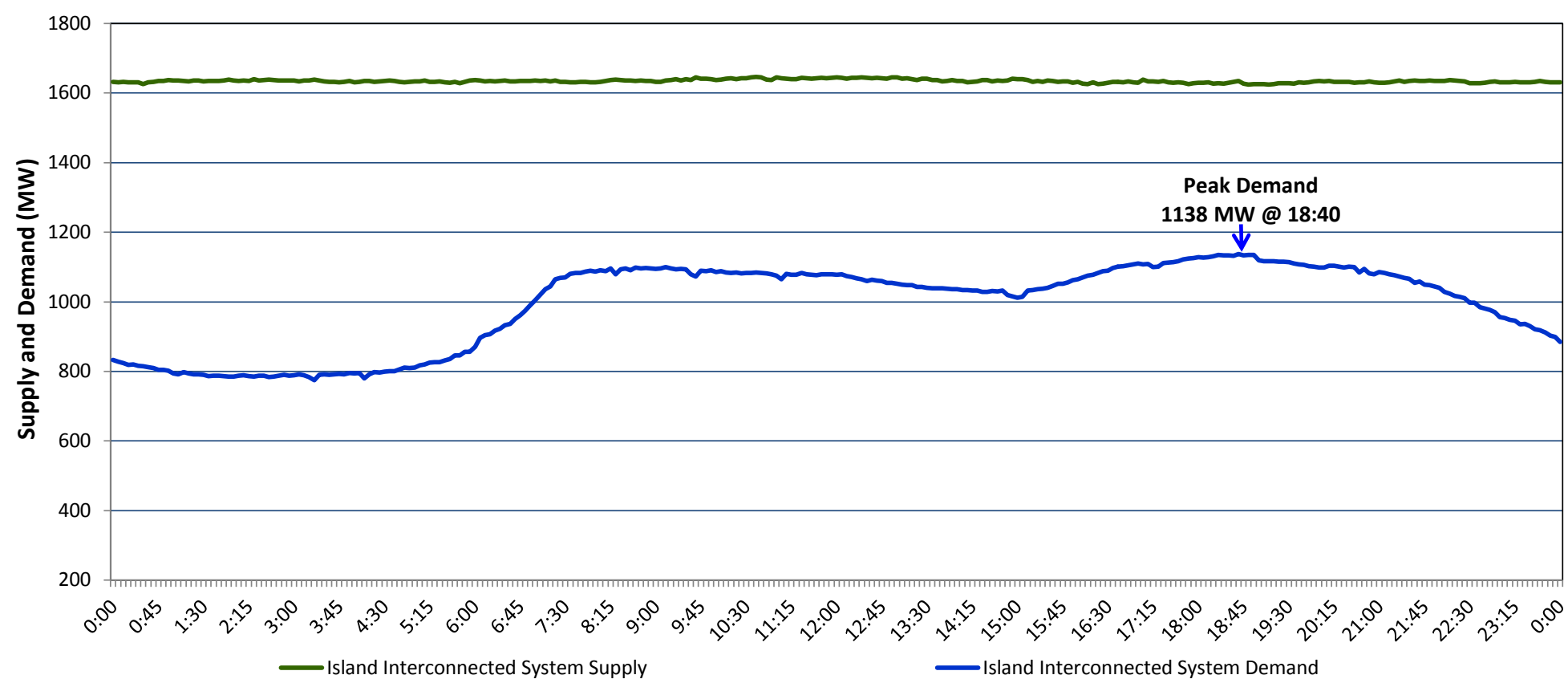


**Newfoundland Labrador Hydro (NLH)
Supply and Demand Status Report Filed Friday, October 28, 2016**

**Section 1
Island Interconnected System Supply and Demand
Actual 24 Hour System Performance For Thursday, October 27, 2016**



Supply Notes For October 27, 2016

- A As of 1956 hours, January 14, 2016, Nalcor Exploits Grand Falls Unit 7 unavailable. No net impact to the Island Interconnected System.
- B As of 1526 hours, March 26, 2016, Stephenville Gas Turbine End A unavailable (25 MW).
- C As of 1316 hours, July 15, 2016, Nalcor Exploits Grand Falls Unit 4 unavailable. Net impact to the Island Interconnected System is 7 MW.
- D As of 1341 hours, August 27, 2016, Holyrood Unit 1 unavailable. Previously derated to 120 MW (170 MW).
- E As of 1719 hours, September 09, 2016, Nalcor Exploits Bishop's Falls plant units 7 and 9 unavailable. No net impact to the Island Interconnected System.
- F As of 0717 hours, September 14, 2016, Bay d'Espoir Unit 1 unavailable (76.5 MW).
- G As of 0717 hours, September 14, 2016, Bay d'Espoir Unit 2 unavailable (76.5 MW).
- H As of 2132 hours, October 10, 2016, Nalcor Exploits Bishop's Falls plant units 1,2,3,4,5,6 and 8 unavailable. Net impact to the Island Interconnected System is 15 MW.
- I As of 2116 hours, October 26, 2016, Hardwoods Gas Turbine derated to 38 MW (50 MW).
- J **At 1554 hours, October 27, 2016, Hawkes Bay Unit 547 (G1) unavailable (2.5 MW).**
- K **At 1705 hours, October 27, 2016, Paradise River Unit available (8 MW).**

**Section 2
Island Interconnected Supply and Demand**

Fri, Oct 28, 2016	Island System Outlook ³	Seven-Day Forecast	Temperature (°C)		Island System Daily Peak Demand (MW)
			Morning	Evening	Forecast
Available Island System Supply: ⁵	1,600 MW	Friday, October 28, 2016	3	-1	1,165
NLH Generation: ⁴	1,330 MW	Saturday, October 29, 2016	3	7	1,120
NLH Power Purchases: ⁶	90 MW	Sunday, October 30, 2016	12	9	945
Other Island Generation:	180 MW	Monday, October 31, 2016	8	6	1,010
Current St. John's Temperature:	0 °C	Tuesday, November 01, 2016	5	5	1,130
Current St. John's Windchill:	-1 °C	Wednesday, November 02, 2016	9	8	1,015
7-Day Island Peak Demand Forecast:	1,165 MW	Thursday, November 03, 2016	6	5	1,055

Supply Notes For October 28, 2016

- Notes:
1. Generation outages for running and corrective maintenance are included. These are not unusual for power system operations. They generally do not impact customer supply. The power system operators schedule outages to system equipment whenever possible to coincide with periods when customer demands are low and sufficient supply reserves are available. However, from time to time equipment outages are necessary and reserves may be impacted.
 2. Due to the Island Interconnected System being isolated from the larger North American grid, when there is a sudden loss of large generating units some customer's load must be interrupted for short periods to bring generation output equal to customer demand. This automatic action of power system protection, referred to as under frequency load shedding, is necessary to ensure the integrity and reliability of system equipment. Under frequency events typically occur 5 to 8 times per year on the Island Interconnected System and the resultant customer load interruptions are generally less than 30 minutes.
 3. As of 0800 Hours.
 4. Gross output including station service at Holyrood (24.5 MW) and improved NLH hydraulic output due to water levels (35 MW).
 5. Gross output from all Island sources (including Note 4).
 6. NLH Power Purchases include: CBPP Co-Gen, Nalcor Exploits, Rattle Brook, Star Lake, Vale capacity assistance (when applicable), and Wind Generation.

**Section 3
Island Peak Demand Information
Previous Day Actual Peak and Current Day Forecast Peak**

Thu, Oct 27, 2016	Actual Island Peak Demand ⁸	18:40	1,138 MW
Fri, Oct 28, 2016	Forecast Island Peak Demand		1,165 MW

- Notes: 8. Island Demand is supplied by NLH generation and purchases, plus generation owned and operated by Newfoundland Power and Corner Brook Pulp & Paper (Deer Lake Power, DLP).