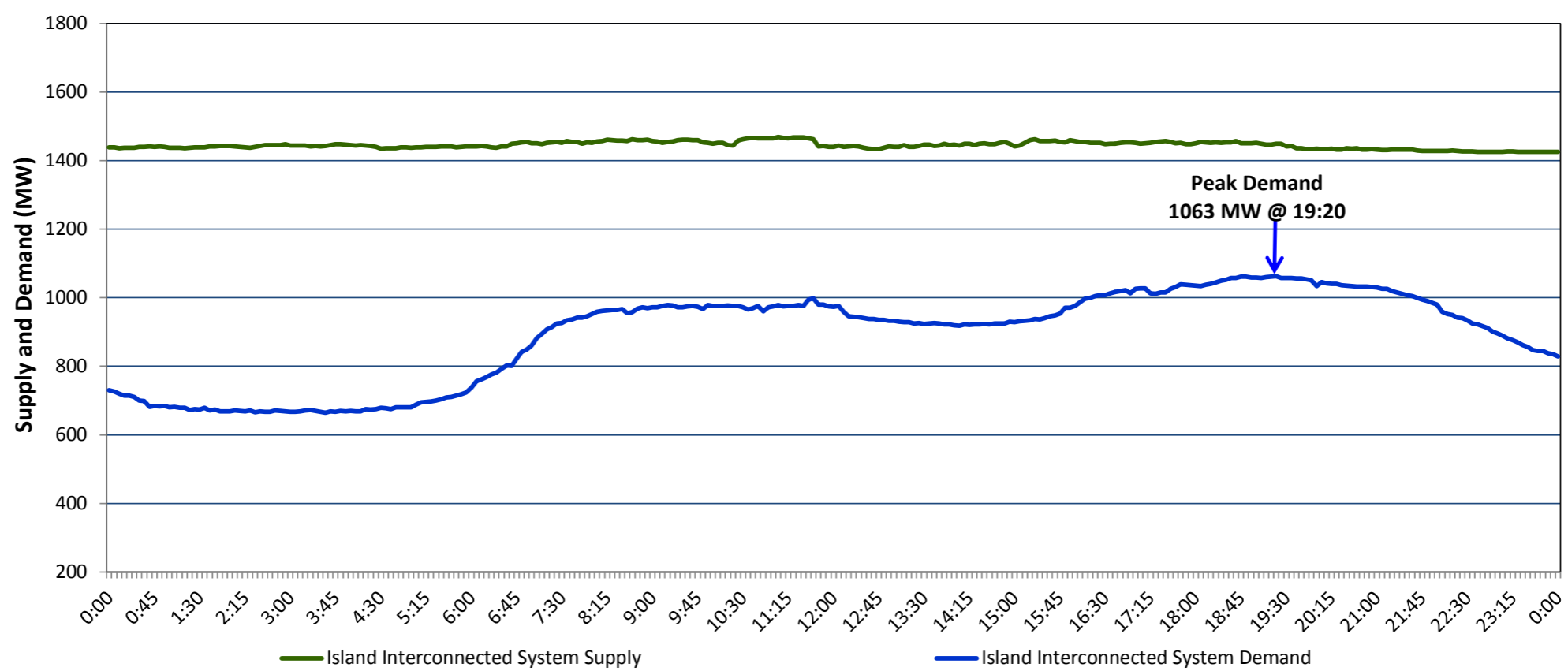


Newfoundland Labrador Hydro (NLH)
Supply and Demand Status Report Filed Wednesday, October 19, 2016 (Revised - October 20, 2016)

Section 1
Island Interconnected System Supply and Demand
Actual 24 Hour System Performance For Tuesday, October 18, 2016



Supply Notes For October 18, 2016

- A As of 1956 hours, January 14, 2016, Nalcor Exploits Grand Falls Unit 7 unavailable. No net impact to the Island Interconnected System.
- B As of 1526 hours, March 26, 2016, Stephenville Gas Turbine End A unavailable (25 MW).
- C As of 1316 hours, July 15, 2016, Nalcor Exploits Grand Falls Unit 4 unavailable. Net impact to the Island Interconnected System is 7 MW.
- D As of 1341 hours, August 27, 2016, Holyrood Unit 1 unavailable. Previously derated to 120 MW (170 MW).
- E As of 0714 hours, August 31, 2016, Cat Arm Unit 1 unavailable (67 MW).
- F As of 1719 hours, September 09, 2016, Nalcor Exploits Bishop's Falls plant units 7 and 9 unavailable. No net impact to the Island Interconnected System.
- G As of 0717 hours, September 14, 2016, Bay d'Espoir Unit 1 unavailable (76.5 MW).
- H As of 0717 hours, September 14, 2016, Bay d'Espoir Unit 2 unavailable (76.5 MW).
- I As of 1956 hours, September 30, 2016, Paradise River Unit unavailable (8 MW).
- J As of 1154 hours, October 02, 2016, Holyrood Unit 3 derated to 135 MW (150 MW).
- K As of 2132 hours, October 10, 2016, Nalcor Exploits Bishop's Falls plant units 1,2,3,4,5,6 and 8 unavailable. Net impact to the Island Interconnected System is 15 MW.
- L As of 1432 hours, October 12, 2016, Hardwoods Gas Turbine derated to 38 MW (50 MW).
- M As of 0853 hours, October 16, 2016, Cat Arm Unit 2 unavailable (67 MW).

Section 2
Island Interconnected Supply and Demand

Wed, Oct 19, 2016	Island System Outlook ³	Seven-Day Forecast	Temperature (°C)		Island System Daily Peak Demand (MW) Forecast
			Morning	Evening	
Available Island System Supply: ⁵	1,430 MW	Wednesday, October 19, 2016	5	13	1,090
NLH Generation: ⁴	1,175 MW	Thursday, October 20, 2016	7	5	1,035
NLH Power Purchases: ⁶	90 MW	Friday, October 21, 2016	4	5	1,075
Other Island Generation:	165 MW	Saturday, October 22, 2016	10	13	935
Current St. John's Temperature:	6 °C	Sunday, October 23, 2016	13	9	910
Current St. John's Windchill:	N/A °C	Monday, October 24, 2016	8	7	1,055
7-Day Island Peak Demand Forecast:	1,125 MW	Tuesday, October 25, 2016	7	5	1,125

Supply Notes For October 19, 2016

- Notes:
1. Generation outages for running and corrective maintenance are included. These are not unusual for power system operations. They generally do not impact customer supply. The power system operators schedule outages to system equipment whenever possible to coincide with periods when customer demands are low and sufficient supply reserves are available. However, from time to time equipment outages are necessary and reserves may be impacted.
 2. Due to the Island Interconnected System being isolated from the larger North American grid, when there is a sudden loss of large generating units some customer's load must be interrupted for short periods to bring generation output equal to customer demand. This automatic action of power system protection, referred to as under frequency load shedding, is necessary to ensure the integrity and reliability of system equipment. Under frequency events typically occur 5 to 8 times per year on the Island Interconnected System and the resultant customer load interruptions are generally less than 30 minutes.
 3. As of 0800 Hours.
 4. Gross output including station service at Holyrood (24.5 MW) and improved NLH hydraulic output due to water levels (35 MW).
 5. Gross output from all Island sources (including Note 4).
 6. NLH Power Purchases include: CBPP Co-Gen, Nalcor Exploits, Rattle Brook, Star Lake, Vale capacity assistance (when applicable), and Wind Generation.

Section 3
Island Peak Demand Information
Previous Day Actual Peak and Current Day Forecast Peak

Tue, Oct 18, 2016	Actual Island Peak Demand ⁸	19:20	1,063 MW
Wed, Oct 19, 2016	Forecast Island Peak Demand		1,090 MW

- Notes: 8. Island Demand is supplied by NLH generation and purchases, plus generation owned and operated by Newfoundland Power and Corner Brook Pulp & Paper (Deer Lake Power, DLP).