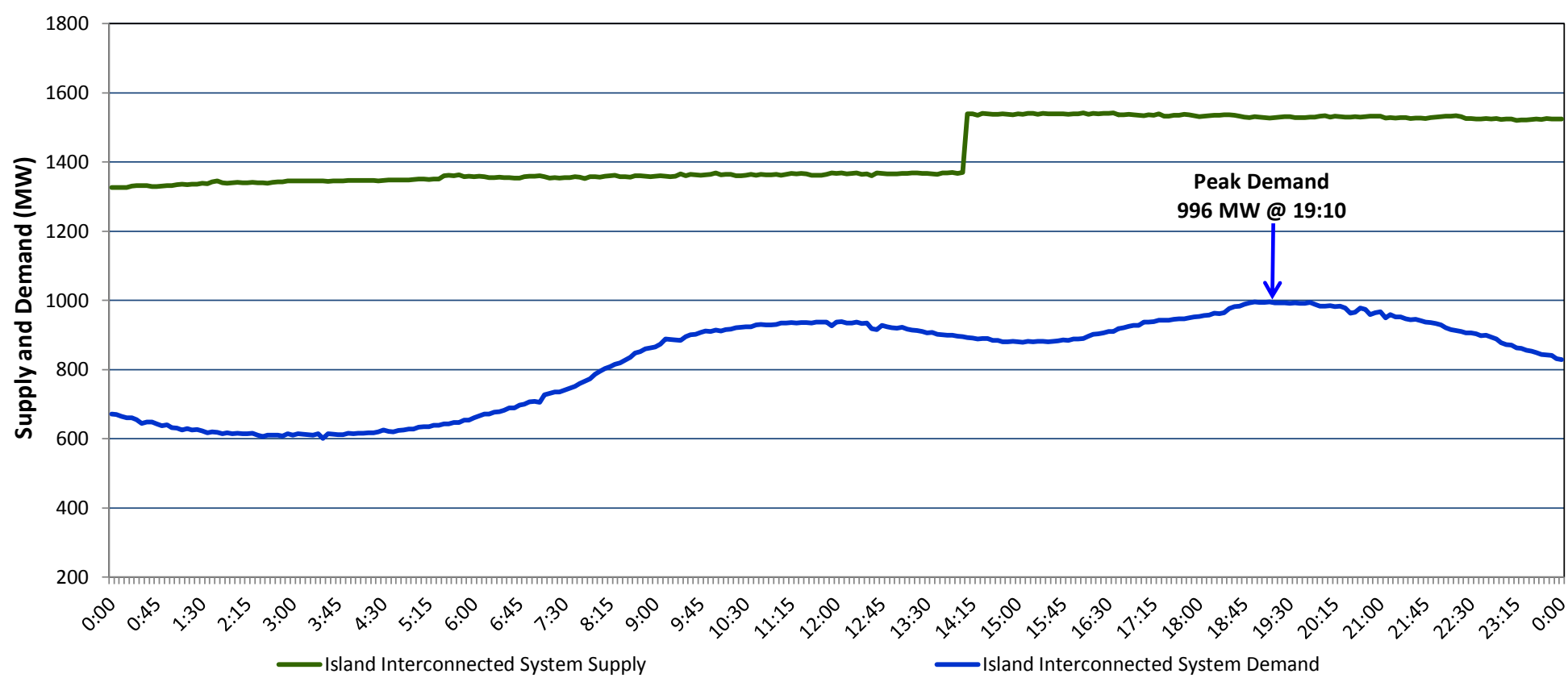


**Newfoundland Labrador Hydro (NLH)
Supply and Demand Status Report Filed Monday, October 17, 2016**

**Section 1
Island Interconnected System Supply and Demand
Actual 24 Hour System Performance For Saturday, October 15, 2016**



Supply Notes For October 15, 2016

- ^{1,2}
- A** As of 1956 hours, January 14, 2016, Nalcor Exploits Grand Falls Unit 7 unavailable. No net impact to the Island Interconnected System.
 - B** As of 1526 hours, March 26, 2016, Stephenville Gas Turbine End A unavailable (25 MW).
 - C** As of 1316 hours, July 15, 2016, Nalcor Exploits Grand Falls Unit 4 unavailable. Net impact to the Island Interconnected System is 7 MW.
 - D** As of 1341 hours, August 27, 2016, Holyrood Unit 1 unavailable. Previously derated to 120 MW (170 MW).
 - E** As of 0714 hours, August 31, 2016, Cat Arm Unit 1 unavailable (67 MW).
 - F** As of 1719 hours, September 09, 2016, Nalcor Exploits Bishop's Falls plant units 7 and 9 unavailable. No net impact to the Island Interconnected System.
 - G** As of 0717 hours, September 14, 2016, Bay d'Espoir Unit 1 unavailable (76.5 MW).
 - H** As of 0717 hours, September 14, 2016, Bay d'Espoir Unit 2 unavailable (76.5 MW).
 - I** As of 1956 hours, September 30, 2016, Paradise River Unit unavailable (8 MW).
 - J** As of 1154 hours, October 02, 2016, Holyrood Unit 3 derated to 135 MW (150 MW).
 - K** As of 0808 hours, October 04, 2016, Holyrood Diesels unit 5 unavailable (2 MW). No net impact to the Island Interconnected System.
 - L** As of 2132 hours, October 10, 2016, Nalcor Exploits Bishop's Falls plant units 1,2,3,4,5,6 and 8 unavailable. Net impact to the Island Interconnected System is 15 MW.
 - M** As of 1432 hours, October 12, 2016, Hardwoods Gas Turbine derated to 38 MW (50 MW).
 - N** At 1408 hours, October 15, 2016, Holyrood Unit 2 available (170 MW).

**Section 2
Island Interconnected Supply and Demand**

Sun, Oct 16, 2016	Island System Outlook ³	Seven-Day Forecast	Temperature (°C)		Island System Daily Peak Demand (MW) Forecast
			Morning	Evening	
Available Island System Supply: ⁵	1,515 MW	Sunday, October 16, 2016	6	5	1,000
NLH Generation: ⁴	1,245 MW	Monday, October 17, 2016	7	8	1,005
NLH Power Purchases: ⁶	105 MW	Tuesday, October 18, 2016	10	4	1,030
Other Island Generation:	165 MW	Wednesday, October 19, 2016	5	12	1,070
Current St. John's Temperature:	4 °C	Thursday, October 20, 2016	10	5	1,080
Current St. John's Windchill:	N/A °C	Friday, October 21, 2016	7	7	990
7-Day Island Peak Demand Forecast:	1,080 MW	Saturday, October 22, 2016	9	17	945

Supply Notes For October 16, 2016

- ³
- Notes:
- Generation outages for running and corrective maintenance are included. These are not unusual for power system operations. They generally do not impact customer supply. The power system operators schedule outages to system equipment whenever possible to coincide with periods when customer demands are low and sufficient supply reserves are available. However, from time to time equipment outages are necessary and reserves may be impacted.
 - Due to the Island Interconnected System being isolated from the larger North American grid, when there is a sudden loss of large generating units some customer's load must be interrupted for short periods to bring generation output equal to customer demand. This automatic action of power system protection, referred to as under frequency load shedding, is necessary to ensure the integrity and reliability of system equipment. Under frequency events typically occur 5 to 8 times per year on the Island Interconnected System and the resultant customer load interruptions are generally less than 30 minutes.
 - As of 0800 Hours.
 - Gross output including station service at Holyrood (24.5 MW) and improved NLH hydraulic output due to water levels (35 MW).
 - Gross output from all Island sources (including Note 4).
 - NLH Power Purchases include: CBPP Co-Gen, Nalcor Exploits, Rattle Brook, Star Lake, Vale capacity assistance (when applicable), and Wind Generation.

**Section 3
Island Peak Demand Information
Previous Day Actual Peak and Current Day Forecast Peak**

Sat, Oct 15, 2016	Actual Island Peak Demand ⁸	19:10	996 MW
Sun, Oct 16, 2016	Forecast Island Peak Demand		1,000 MW

- Notes: ⁸ Island Demand is supplied by NLH generation and purchases, plus generation owned and operated by Newfoundland Power and Corner Brook Pulp & Paper (Deer Lake Power, DLP).