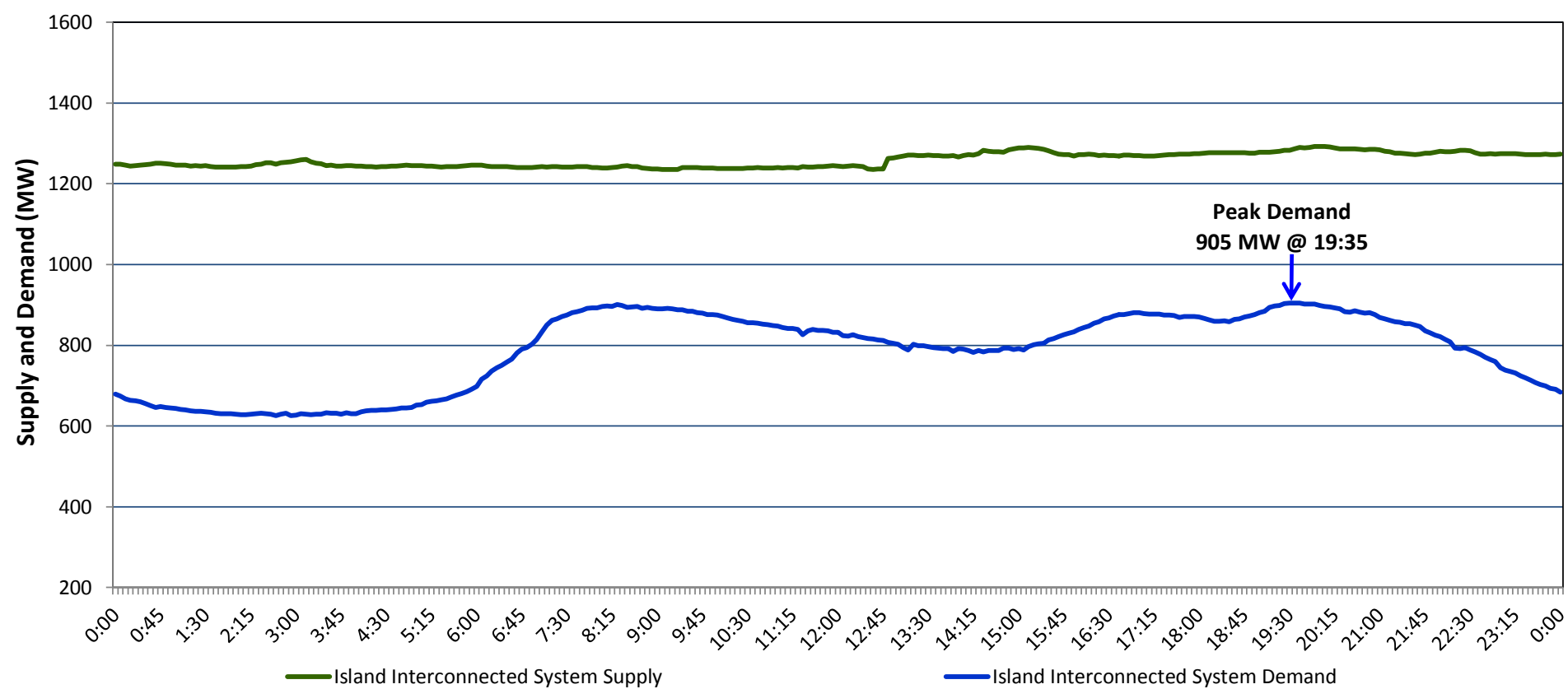


**Newfoundland Labrador Hydro (NLH)
Supply and Demand Status Report Filed Wednesday, September 28, 2016**

**Section 1
Island Interconnected System Supply and Demand
Actual 24 Hour System Performance For Tuesday, September 27, 2016**



Supply Notes For September 27, 2016 ^{1,2}

- A** As of 1956 hours, January 14, 2016, Nalcor Exploits Grand Falls Unit 7 unavailable. No net impact to the Island Interconnected System.
- B** As of 1526 hours, March 26, 2016, Stephenville Gas Turbine End A unavailable (25 MW).
- C** As of 1316 hours, July 15, 2016, Nalcor Exploits Grand Falls Unit 4 unavailable. Net impact to the Island Interconnected System is 7 MW.
- D** As of 1341 hours, August 27, 2016, Holyrood Unit 1 unavailable. Previously derated to 120 MW (170 MW).
- E** As of 0757 hours, August 29, 2016, Bay d'Espoir Unit 5 unavailable (76.5 MW).
- F** As of 0714 hours, August 31, 2016, Cat Arm Unit 1 unavailable (67 MW).
- G** As of 1719 hours, September 09, 2016, Nalcor Exploits Bishop's Falls plant units 7 and 9 unavailable. No net impact to the Island Interconnected System.
- H** As of 0717 hours, September 14, 2016, Bay d'Espoir Unit 1 unavailable (76.5 MW).
- I** As of 0717 hours, September 14, 2016, Bay d'Espoir Unit 2 unavailable (76.5 MW).
- J** As of 2256 hours, September 19, 2016, Holyrood Unit 3 unavailable. Previously derated to 135 MW (150 MW).
- K** As of 0824 hours, September 21, 2016, Holyrood Unit 2 derated to 150 MW (170 MW).
- L** As of 0031 hours, September 23, 2016, Paradise River Unit unavailable (8 MW).
- M** As of 1700 hours, September 26, 2016, Hardwoods Gas Turbine End A derated to 19 MW (25 MW).
- N** At 1247 hours, September 27, 2016, Hardwoods Gas Turbine End B available (25 MW).

**Section 2
Island Interconnected Supply and Demand**

Wed, Sep 28, 2016 Island System Outlook ³	Seven-Day Forecast	Temperature (°C)		Island System Daily Peak Demand (MW)	
		Morning	Evening	Forecast	
Available Island System Supply: ⁵	1,280 MW	Wednesday, September 28, 2016	7	6	915
NLH Generation: ⁴	1,010 MW	Thursday, September 29, 2016	9	13	925
NLH Power Purchases: ⁶	105 MW	Friday, September 30, 2016	8	10	920
Other Island Generation:	165 MW	Saturday, October 01, 2016	10	10	795
Current St. John's Temperature:	6 °C	Sunday, October 02, 2016	7	8	870
Current St. John's Windchill:	N/A °C	Monday, October 03, 2016	8	8	910
7-Day Island Peak Demand Forecast:	1,060 MW	Tuesday, October 04, 2016	7	5	1,060

Supply Notes For September 28, 2016 ³

- Notes:
1. Generation outages for running and corrective maintenance are included. These are not unusual for power system operations. They generally do not impact customer supply. The power system operators schedule outages to system equipment whenever possible to coincide with periods when customer demands are low and sufficient supply reserves are available. However, from time to time equipment outages are necessary and reserves may be impacted.
 2. Due to the Island Interconnected System being isolated from the larger North American grid, when there is a sudden loss of large generating units some customer's load must be interrupted for short periods to bring generation output equal to customer demand. This automatic action of power system protection, referred to as under frequency load shedding, is necessary to ensure the integrity and reliability of system equipment. Under frequency events typically occur 5 to 8 times per year on the Island Interconnected System and the resultant customer load interruptions are generally less than 30 minutes.
 3. As of 0800 Hours.
 4. Gross output including station service at Holyrood (24.5 MW) and improved NLH hydraulic output due to water levels (35 MW).
 5. Gross output from all Island sources (including Note 4).
 6. NLH Power Purchases include: CBPP Co-Gen, Nalcor Exploits, Rattle Brook, Star Lake, Vale capacity assistance (when applicable), and Wind Generation.

**Section 3
Island Peak Demand Information
Previous Day Actual Peak and Current Day Forecast Peak**

Tue, Sep 27, 2016	Actual Island Peak Demand ⁸	19:35	905 MW
Wed, Sep 28, 2016	Forecast Island Peak Demand		915 MW

Not 8. Island Demand is supplied by NLH generation and purchases, plus generation owned and operated by Newfoundland Power and Corner Brook Pulp & Paper (Deer Lake Power, DLP).