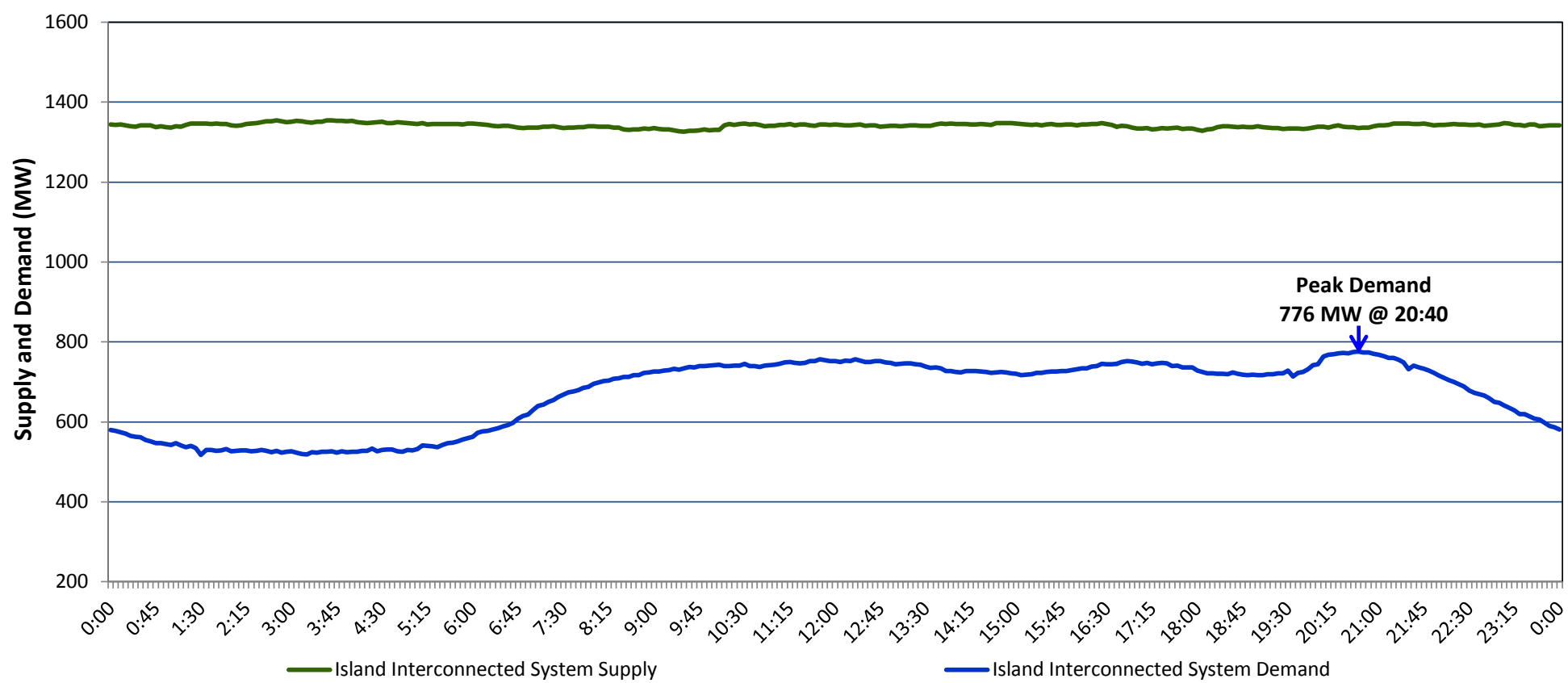


**Newfoundland Labrador Hydro (NLH)
Supply and Demand Status Report Filed Wednesday, September 07, 2016**

**Section 1
Island Interconnected System Supply and Demand
Actual 24 Hour System Performance For Tuesday, September 06, 2016**



Supply Notes For September 06, 2016

- A As of 1956 hours, January 14, 2016, Nalcor Exploits Grand Falls Unit 7 unavailable. No net impact to the Island Interconnected System.
- B As of 1526 hours, March 26, 2016, Stephenville Gas Turbine End A unavailable (25 MW).
- C As of 0822 hours, June 05, 2016, Bay d'Espoir Unit 4 unavailable (76.5 MW).
- D As of 1425 hours, June 16, 2016, Holyrood Unit 2 unavailable. Previously derated to 120 MW (170 MW).
- E As of 1316 hours, July 15, 2016, Nalcor Exploits Grand Falls Unit 4 unavailable. Net impact to the Island Interconnected System is 7 MW.
- F As of 1451 hours, August 22, 2016, Nalcor Exploits Bishop's Falls plant unavailable. Net impact to the Island Interconnected System is 15 MW.
- G As of 1733 hours, August 26, 2016, Holyrood Unit 3 derated to 135 MW (150 MW).
- H As of 1341 hours, August 27, 2016, Holyrood Unit 1 unavailable. Previously derated to 120 MW (170 MW).
- I As of 0757 hours, August 29, 2016, Bay d'Espoir Unit 5 unavailable (76.5 MW).
- J As of 0714 hours, August 31, 2016, Cat Arm Unit 1 unavailable (67 MW).
- K As of 1609 hours, August 31, 2016, Hardwoods Gas Turbine derated to 38 MW (50 MW).
- L **At 0723 hours, September 06, 2016, Nalcor Exploits Grand Falls Unit 5 unavailable. No net impact to the Island Interconnected System.**

**Section 2
Island Interconnected Supply and Demand**

Wed, Sep 07, 2016	Island System Outlook ³	Seven-Day Forecast	Temperature (°C)		Island System Daily Peak Demand (MW) Forecast
			Morning	Evening	
Available Island System Supply: ⁵	1,335 MW	Wednesday, September 07, 2016	19	20	775
NLH Generation: ⁴	1,080 MW	Thursday, September 08, 2016	20	10	880
NLH Power Purchases: ⁶	90 MW	Friday, September 09, 2016	13	19	795
Other Island Generation:	165 MW	Saturday, September 10, 2016	16	9	820
Current St. John's Temperature:	18 °C	Sunday, September 11, 2016	9	12	800
Current St. John's Windchill:	N/A °C	Monday, September 12, 2016	15	14	805
7-Day Island Peak Demand Forecast:	880 MW	Tuesday, September 13, 2016	12	14	805

Supply Notes For September 07, 2016

- M **At 0130 hours, September 07, 2016, Nalcor Exploits Grand Falls Unit 6 unavailable. Net impact to the Island Interconnected System is 5 MW.**

- Notes:
1. Generation outages for running and corrective maintenance are included. These are not unusual for power system operations. They generally do not impact customer supply. The power system operators schedule outages to system equipment whenever possible to coincide with periods when customer demands are low and sufficient supply reserves are available. However, from time to time equipment outages are necessary and reserves may be impacted.
 2. Due to the Island Interconnected System being isolated from the larger North American grid, when there is a sudden loss of large generating units some customer's load must be interrupted for short periods to bring generation output equal to customer demand. This automatic action of power system protection, referred to as under frequency load shedding, is necessary to ensure the integrity and reliability of system equipment. Under frequency events typically occur 5 to 8 times per year on the Island Interconnected System and the resultant customer load interruptions are generally less than 30 minutes.
 3. As of 0800 Hours.
 4. Gross output including station service at Holyrood (24.5 MW) and improved NLH hydraulic output due to water levels (35 MW).
 5. Gross output from all Island sources (including Note 4).
 6. NLH Power Purchases include: CBPP Co-Gen, Nalcor Exploits, Rattle Brook, Star Lake, Vale capacity assistance (when applicable), and Wind Generation.

**Section 3
Island Peak Demand Information
Previous Day Actual Peak and Current Day Forecast Peak**

Tue, Sep 06, 2016	Actual Island Peak Demand ⁸	20:40	776 MW
Wed, Sep 07, 2016	Forecast Island Peak Demand		775 MW

Notes: 8. Island Demand is supplied by NLH generation and purchases, plus generation owned and operated by Newfoundland Power and Corner Brook Pulp & Paper (Deer Lake Power, DLP).