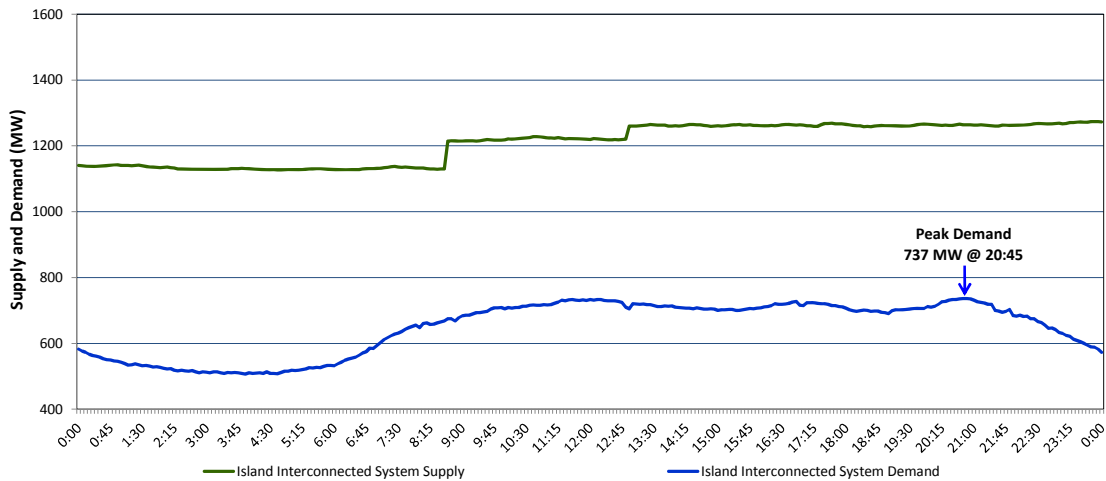


Newfoundland Labrador Hydro (NLH) Supply and Demand Status Report Filed Friday, August 26, 2016

Section 1 Island Interconnected System Supply and Demand Actual 24 Hour System Performance For Thursday, August 25, 2016



Supply Notes For August 25, 2016

- A As of 1956 hours, January 14, 2016, Nalcor Exploits Grand Falls Unit 7 unavailable. No net impact to the Island Interconnected System.
- B As of 1526 hours, March 26, 2016, Stephenville Gas Turbine End A unavailable (25 MW).
- C As of 0822 hours, June 05, 2016, Bay d'Espoir Unit 4 unavailable (76.5 MW).
- D As of 1425 hours, June 16, 2016, Holyrood Unit 2 unavailable. Previously derated to 120 MW (170 MW).
- E As of 0833 hours, June 30, 2016, Bay d'Espoir Unit 7 unavailable (154.4 MW).
- F As of 1316 hours, July 15, 2016, Nalcor Exploits Grand Falls Unit 4 unavailable. Net impact to the Island Interconnected System is 7 MW.
- G As of 1610 hours, July 16, 2016, Holyrood Unit 1 derated to 120 MW (170 MW).
- H As of 1125 hours, July 18, 2016, Hardwoods Turbine unavailable. Previously derated to 38 MW (50 MW).
- I As of 1811 hours, August 17, 2016, Holyrood Unit 3 was removed from service for economic dispatch. Unit previously derated to 135 MW (150 MW).
- J As of 1451 hours, August 22, 2016, Nalcor Exploits Bishop's Falls plant unavailable. Net impact to the Island Interconnected System is 15 MW.
- K At 0839 hours, August 25, 2016, Upper Salmon Unit available (84 MW).
- L At 1255 hours, August 25, 2016, Granite Canal Unit available (40 MW).

Section 2 Island Interconnected Supply and Demand

Fri, Aug 26, 2016		Island System Outlook ³	Seven-Day Forecast	Temperature (°C)		Island System Daily Peak Demand (MW)
				Morning	Evening	
Available Island System Supply: ⁵	1,275	MW	Friday, August 26, 2016	19	19	755
NLH Generation: ⁴	1,015	MW	Saturday, August 27, 2016	18	12	785
NLH Power Purchases: ⁶	95	MW	Sunday, August 28, 2016	13	15	770
Other Island Generation:	165	MW	Monday, August 29, 2016	17	15	780
Current St. John's Temperature:	18	°C	Tuesday, August 30, 2016	14	17	780
Current St. John's Windchill:	N/A	°C	Wednesday, August 31, 2016	17	16	780
7-Day Island Peak Demand Forecast:	795	MW	Thursday, September 01, 2016	17	19	795

Supply Notes For August 26, 2016

- Notes: 1. Generation outages for running and corrective maintenance are included. These are not unusual for power system operations. They generally do not impact customer supply. The power system operators schedule outages to system equipment whenever possible to coincide with periods when customer demands are low and sufficient supply reserves are available. However, from time to time equipment outages are necessary and reserves may be impacted.
2. Due to the Island Interconnected System being isolated from the larger North American grid, when there is a sudden loss of large generating units some customer's load must be interrupted for short periods to bring generation output equal to customer demand. This automatic action of power system protection, referred to as under frequency load shedding, is necessary to ensure the integrity and reliability of system equipment. Under frequency events typically occur 5 to 8 times per year on the Island Interconnected System and the resultant customer load interruptions are generally less than 30 minutes.
3. As of 0800 Hours.
4. Gross output including station service at Holyrood (24.5 MW) and improved NLH hydraulic output due to water levels (35 MW).
5. Gross output from all Island sources (including Note 4).
6. NLH Power Purchases include: CBPP Co-Gen, Nalcor Exploits, Rattle Brook, Star Lake, Vale capacity assistance (when applicable), and Wind Generation.

Section 3 Island Peak Demand Information Previous Day Actual Peak and Current Day Forecast Peak

Thu, Aug 25, 2016	Actual Island Peak Demand ⁸	20:45	737 MW
Fri, Aug 26, 2016	Forecast Island Peak Demand		755 MW

Notes: 8. Island Demand is supplied by NLH generation and purchases, plus generation owned and operated by Newfoundland Power and Corner Brook Pulp & Paper (Deer Lake Power, DLP).