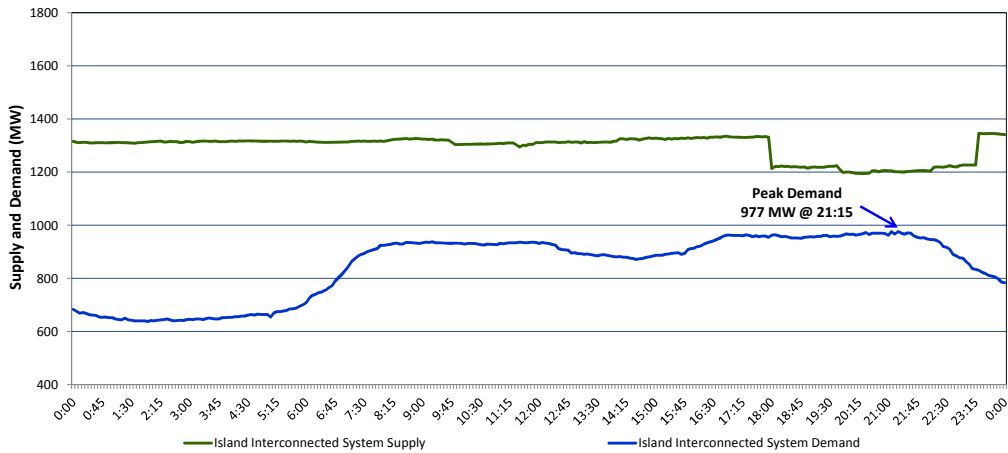


**Newfoundland Labrador Hydro (NLH)
Supply and Demand Status Report Filed Thursday, June 09, 2016**

**Section 1
Island Interconnected System Supply and Demand
Actual 24 Hour System Performance For Wednesday, June 08, 2016**



Supply Notes For June 08, 2016

- 1,2
- A As of 1956 hours, January 14, 2016, Nalcor Exploits Grand Falls Unit 7 unavailable. No net impact to the Island Interconnected System.
 - B As of 0732 hours, February 29, 2016, Hardwoods Gas Turbine derated to 38 MW (50 MW). End A 19 MW, End B 25 MW.
 - C As of 1526 hours, March 26, 2016, Stephenville Gas Turbine End A unavailable (25 MW).
 - D As of 1029 hours, April 15, 2016, Holyrood Unit 3 unavailable (150 MW).
 - E As of 0937 hours, May 10, 2016, Bay d'Espoir Unit 6 unavailable (76.5 MW).
 - F As of 0919 hours, May 29, 2016, Holyrood Unit 2 derated to 120 MW (170 MW).
 - G As of 0958 hours, May 31, 2016, Holyrood Combustion Turbine unavailable (123.5 MW).
 - H As of 0822 hours, June 05, 2016, Bay d'Espoir Unit 3 unavailable (76.5 MW).
 - I As of 0822 hours, June 05, 2016, Bay d'Espoir Unit 4 unavailable (76.5 MW).
 - J As of 1059 hours, June 05, 2016, Nalcor Exploits Grand Falls Unit 9 (30 MW) unavailable. Net impact to the Island Interconnected System is 7 MW.
 - K As of 2008 hours, June 06, 2016, Stephenville Gas Turbine End B unavailable (25 MW).
 - L At 0945 hours, June 08, 2016, Paradise River Unit unavailable (8 MW).
 - M At 1000 hours, June 08, 2016, St. Anthony Diesel Unit 544 unavailable (2 MW).
 - N At 1400 hours, June 08, 2016, Paradise River Unit available (8 MW).
 - O At 1430 hours, June 08, 2016, St. Anthony Diesel Unit 544 available (2 MW).
 - P At 1756 hours, June 08, 2016, Holyrood Unit 1 unavailable, previously derated to 120 MW (170 MW).
 - Q At 2315 hours, June 08, 2016, Holyrood Unit 1 available, derated to 120 MW (170 MW).

**Section 2
Island Interconnected Supply and Demand**

Thu, Jun 09, 2016	Island System Outlook ³	Seven-Day Forecast	Temperature (°C)		Island System Daily Peak Demand (MW) Forecast
			Morning	Evening	
Available Island System Supply: ⁵	1,300 MW	Thursday, June 09, 2016	5	10	1,000
NLH Generation: ⁴	1,030 MW	Friday, June 10, 2016	8	5	965
NLH Power Purchases: ⁶	95 MW	Saturday, June 11, 2016	5	6	910
Other Island Generation:	175 MW	Sunday, June 12, 2016	10	13	765
Current St. John's Temperature:	4 °C	Monday, June 13, 2016	9	9	890
Current St. John's Windchill:	N/A °C	Tuesday, June 14, 2016	7	10	900
7-Day Island Peak Demand Forecast:	1,000 MW	Wednesday, June 15, 2016	13	11	780

Supply Notes For June 09, 2016

- 3
- Notes:
1. Generation outages for running and corrective maintenance are included. These are not unusual for power system operations. They generally do not impact customer supply. The power system operators schedule outages to system equipment whenever possible to coincide with periods when customer demands are low and sufficient supply reserves are available. However, from time to time equipment outages are necessary and reserves may be impacted.
 2. Due to the Island Interconnected System being isolated from the larger North American grid, when there is a sudden loss of large generating units some customer's load must be interrupted for short periods to bring generation output equal to customer demand. This automatic action of power system protection, referred to as under frequency load shedding, is necessary to ensure the integrity and reliability of system equipment. Under frequency events typically occur 5 to 8 times per year on the Island Interconnected System and the resultant customer load interruptions are generally less than 30 minutes.
 3. As of 0800 Hours.
 4. Gross output including station service at Holyrood (24.5 MW) and improved NLH hydraulic output due to water levels (35 MW).
 5. Gross output from all Island sources (including Note 4).
 6. NLH Power Purchases include: CBPP Co-Gen, Nalcor Exploits, Rattle Brook, Star Lake, Vale capacity assistance (when applicable), and Wind Generation.

**Section 3
Island Peak Demand Information
Previous Day Actual Peak and Current Day Forecast Peak**

Wed, Jun 08, 2016	Actual Island Peak Demand ⁸	21:15	977 MW
Thu, Jun 09, 2016	Forecast Island Peak Demand		1,000 MW

Notes: 8. Island Demand is supplied by NLH generation and purchases, plus generation owned and operated by Newfoundland Power and Corner Brook Pulp & Paper (Deer Lake Power, DLP).