

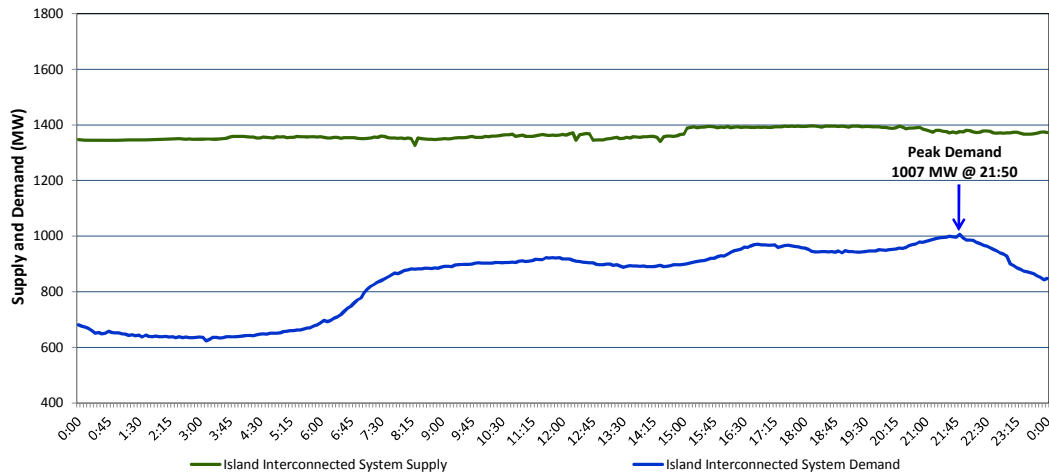
Newfoundland Labrador Hydro (NLH)

Supply and Demand Status Report Filed Thursday, June 02, 2016

Section 1

Island Interconnected System Supply and Demand

Actual 24 Hour System Performance For Wednesday, June 01, 2016



Supply Notes For June 01, 2016

- 1,2
- A As of 1956 hours, January 14, 2016, Nalcor Exploits Grand Falls Unit 7 unavailable. No net impact to the Island Interconnected System.
 - B As of 0732 hours, February 29, 2016, Hardwoods Gas Turbine derated to 38 MW (50 MW). End A 19 MW, End B 25 MW.
 - C As of 1526 hours, March 26, 2016, Stephenville Gas Turbine End A unavailable (25 MW).
 - D As of 1029 hours, April 15, 2016, Holyrood Unit 3 unavailable (150 MW).
 - E As of 2209 hours, April 30, 2016, Holyrood Unit 1 derated to 120 MW (170 MW).
 - F As of 0937 hours, May 10, 2016, Bay d'Espoir Unit 6 unavailable (76.5 MW).
 - G As of 0724 hours, May 16 2016, Nalcor Exploits Grand Falls Unit 4 (30 MW) unavailable. Net impact to the Island Interconnected System is 7 MW.
 - H As of 1642 hours, May 21, 2016, Bay d'Espoir Unit 1 unavailable (76.5 MW).
 - I As of 1642 hours, May 21, 2016, Bay d'Espoir Unit 2 unavailable (76.5 MW).
 - J As of 0919 hours, May 29, 2016, Holyrood Unit 2 derated to 120 MW (170 MW).
 - K As of 0958 hours, May 31, 2016, Holyrood Combustion Turbine unavailable (123.5 MW).
 - L At 1239 hours, June 01, 2016, Stephenville Gas Turbine End B unavailable (25 MW).
 - M At 1512 hours, June 01, 2016, Stephenville Gas Turbine End B available (25 MW).

Section 2

Island Interconnected Supply and Demand

Thu, Jun 02, 2016	Island System Outlook ³	Seven-Day Forecast	Temperature (°C)		Island System Daily Peak Demand (MW)
			Morning	Evening	Forecast
Available Island System Supply: ⁵	1,345 MW	Thursday, June 02, 2016	3	3	1,040
NLH Generation: ⁴	1,055 MW	Friday, June 03, 2016	6	5	1,005
NLH Power Purchases: ⁶	110 MW	Saturday, June 04, 2016	6	4	865
Other Island Generation:	180 MW	Sunday, June 05, 2016	5	6	895
Current St. John's Temperature:	2 °C	Monday, June 06, 2016	7	6	870
Current St. John's Windchill:	N/A °C	Tuesday, June 07, 2016	7	7	905
7-Day Island Peak Demand Forecast:	1,040 MW	Wednesday, June 08, 2016	6	8	940

Supply Notes For June 02, 2016

- 3
- Notes:
1. Generation outages for running and corrective maintenance are included. These are not unusual for power system operations. They generally do not impact customer supply. The power system operators schedule outages to system equipment whenever possible to coincide with periods when customer demands are low and sufficient supply reserves are available. However, from time to time equipment outages are necessary and reserves may be impacted.
 2. Due to the Island Interconnected System being isolated from the larger North American grid, when there is a sudden loss of large generating units some customer's load must be interrupted for short periods to bring generation output equal to customer demand. This automatic action of power system protection, referred to as under frequency load shedding, is necessary to ensure the integrity and reliability of system equipment. Under frequency events typically occur 5 to 8 times per year on the Island Interconnected System and the resultant customer load interruptions are generally less than 30 minutes.
 3. As of 0800 Hours.
 4. Gross output including station service at Holyrood (24.5 MW) and improved NLH hydraulic output due to water levels (35 MW).
 5. Gross output from all Island sources (including Note 4).
 6. NLH Power Purchases include: CBPP Co-Gen, Nalcor Exploits, Rattle Brook, Star Lake, Vale capacity assistance (when applicable), and Wind Generation.

Section 3

Island Peak Demand Information

Previous Day Actual Peak and Current Day Forecast Peak

Wed, Jun 01, 2016	Actual Island Peak Demand ⁸	21:50	1,007 MW
Thu, Jun 02, 2016	Forecast Island Peak Demand		1,040 MW

Notes: 8. Island Demand is supplied by NLH generation and purchases, plus generation owned and operated by Newfoundland Power and Corner Brook Pulp & Paper (Deer Lake Power, DLP).