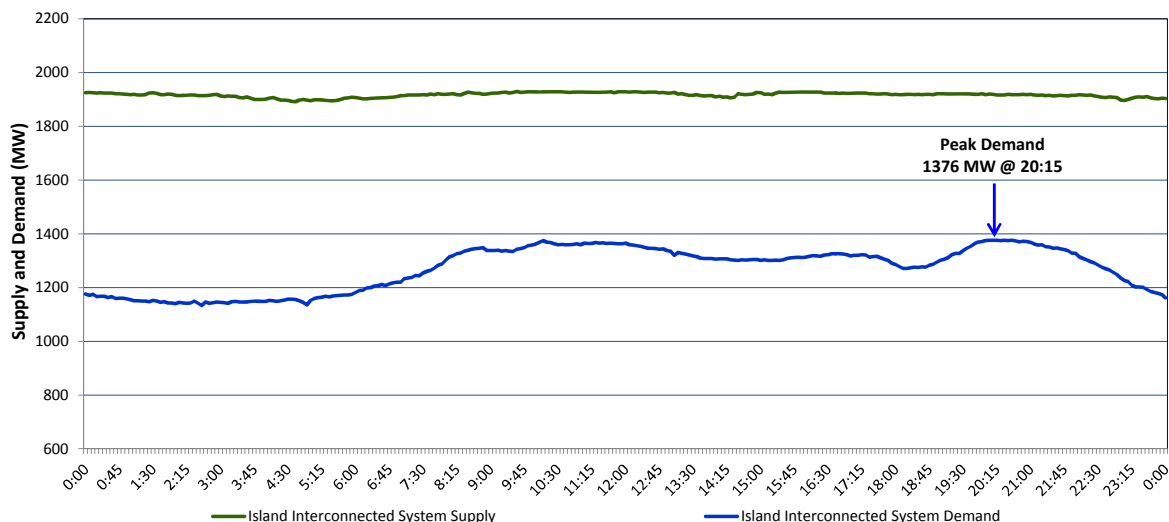


# Newfoundland Labrador Hydro (NLH) Supply and Demand Status Report Filed Monday, March 21, 2016

## Section 1 Island Interconnected System Supply and Demand Actual 24 Hour System Performance For Sunday, March 20, 2016



### Supply Notes For March 20, 2016

- A** As of 1956 hours, January 14, 2016, Nalcor Exploits Grand Falls Unit 7 unavailable. No net impact to the Island Interconnected System.
- B** As of 0710 hours, February 08, 2016, Holyrood Unit 2 derated to 120 MW (170 MW).
- C** As of 2010 hours, February 26, 2016, Holyrood Unit 1 derated to 120 MW (170 MW).
- D** As of 0732 hours, February 29, 2016, Hardwoods Gas Turbine derated to 38 MW (50 MW). End A 19 MW, End B 25 MW.
- E** As of 1100 hours, March 16, 2016, St. Anthony Diesel Unit 546 unavailable (2 MW).

## Section 2 Island Interconnected Supply and Demand

| Mon, Mar 21, 2016 Island System Outlook <sup>3</sup> |       |    | Temperature<br>(°C)       |         | Island System Daily<br>Peak Demand (MW) |                       |
|--|-------|----|---------------------------|---------|---|-----------------------|
|  |       |    |                           |         |   |                       |
| Seven-Day Forecast                                   |       |    | Morning                   | Evening | Forecast                                | Adjusted <sup>6</sup> |
| Available Island System Supply: <sup>5</sup>         | 1,905 | MW | Monday, March 21, 2016    |         | 1,485                                   | 1,388                 |
| NLH Generation: <sup>4</sup>                         | 1,580 | MW | Tuesday, March 22, 2016   |         | 1,415                                   | 1,318                 |
| NLH Power Purchases: <sup>7</sup>                    | 110   | MW | Wednesday, March 23, 2016 |         | 1,495                                   | 1,398                 |
| Other Island Generation:                             | 215   | MW | Thursday, March 24, 2016  |         | 1,510                                   | 1,412                 |
| Current St. John's Temperature:                      | -8    | °C | Friday, March 25, 2016    |         | 1,380                                   | 1,284                 |
| Current St. John's Windchill:                        | -14   | °C | Saturday, March 26, 2016  |         | 1,290                                   | 1,195                 |
| 7-Day Island Peak Demand Forecast:                   | 1,510 | MW | Sunday, March 27, 2016    |         | 1,120                                   | 1,027                 |

### Supply Notes For March 21, 2016

- Notes: 1. Generation outages for running and corrective maintenance are included. These are not unusual for power system operations. They generally do not impact customer supply. The power system operators schedule outages to system equipment whenever possible to coincide with periods when customer demands are low and sufficient supply reserves are available. However, from time to time equipment outages are necessary and reserves may be impacted.
2. Due to the Island Interconnected System being isolated from the larger North American grid, when there is a sudden loss of large generating units some customer's load must be interrupted for short periods to bring generation output equal to customer demand. This automatic action of power system protection, referred to as under frequency load shedding, is necessary to ensure the integrity and reliability of system equipment. Under frequency events typically occur 5 to 8 times per year on the Island Interconnected System and the resultant customer load interruptions are generally less than 30 minutes.
3. As of 0800 Hours.
4. Gross output including station service at Holyrood (24.5 MW) and improved NLH hydraulic output due to water levels (35 MW).
5. Gross output from all island sources (including Note 4).
6. Adjusted for CBP&P interruptible load (when applicable) and the impact of voltage reduction.
7. NLH Power Purchases include: CBPP Co-Gen, Nalcor Exploits, Rattle Brook, Star Lake, Vale capacity assistance, and Wind Generation.

## Section 3 Island Peak Demand Information Previous Day Actual Peak and Current Day Forecast Peak

|                   |  |       |          |
|-------------------|--|-------|----------|
| Sun, Mar 20, 2016 | Actual Island Peak Demand <sup>8</sup> | 20:15 | 1,376 MW |
| Mon, Mar 21, 2016 | Forecast Island Peak Demand            |       | 1,485 MW |

- Notes: 8. Island Demand is supplied by NLH generation and purchases, plus generation owned and operated by Newfoundland Power and Corner Brook Pulp & Paper (Deer Lake Power, DLP).