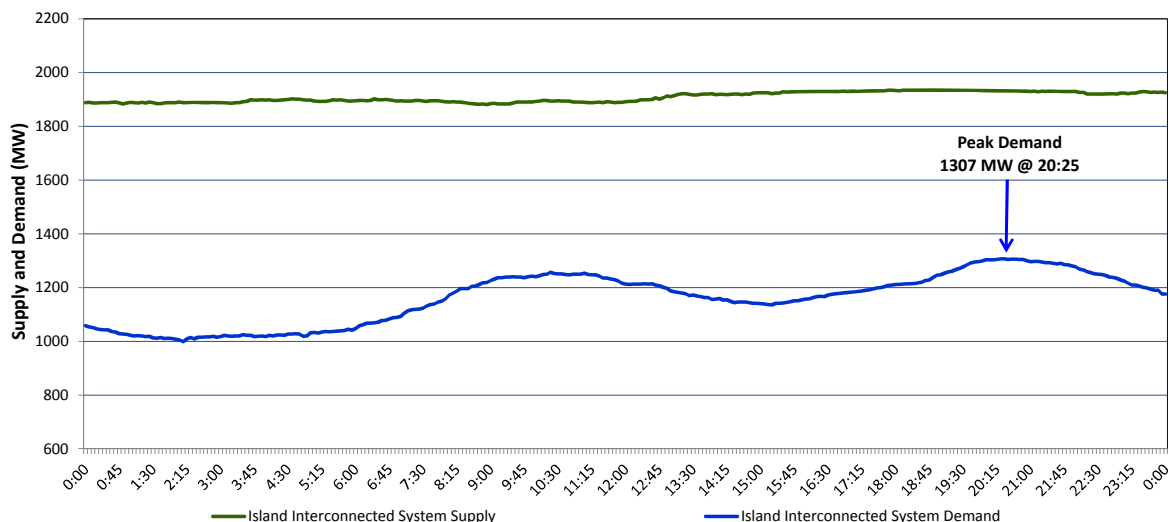


Newfoundland Labrador Hydro (NLH) Supply and Demand Status Report Filed Monday, March 21, 2016

Section 1 Island Interconnected System Supply and Demand Actual 24 Hour System Performance For Saturday, March 19, 2016



Supply Notes For March 19, 2016

- A** As of 1956 hours, January 14, 2016, Nalcor Exploits Grand Falls Unit 7 unavailable. No net impact to the Island Interconnected System.
- B** As of 0710 hours, February 08, 2016, Holyrood Unit 2 derated to 120 MW (170 MW).
- C** As of 2010 hours, February 26, 2016, Holyrood Unit 1 derated to 120 MW (170 MW).
- D** As of 0732 hours, February 29, 2016, Hardwoods Gas Turbine derated to 38 MW (50 MW). End A 19 MW, End B 25 MW.
- E** As of 1100 hours, March 16, 2016, St. Anthony Diesel Unit 546 unavailable (2 MW).

Section 2 Island Interconnected Supply and Demand

Sun, Mar 20, 2016			Seven-Day Forecast	Temperature (°C)		Island System Daily Peak Demand (MW)	
				Morning	Evening		
Available Island System Supply: ⁵	1,925	MW	Sunday, March 20, 2016	-5	-4	1,405	1,309
NLH Generation: ⁴	1,580	MW	Monday, March 21, 2016	-6	-2	1,465	1,368
NLH Power Purchases: ⁷	135	MW	Tuesday, March 22, 2016	5	-3	1,420	1,323
Other Island Generation:	210	MW	Wednesday, March 23, 2016	-3	-1	1,470	1,373
Current St. John's Temperature:	-6	°C	Thursday, March 24, 2016	-8	-6	1,570	1,472
Current St. John's Windchill:	-14	°C	Friday, March 25, 2016	-6	0	1,350	1,254
7-Day Island Peak Demand Forecast:	1,570	MW	Saturday, March 26, 2016	3	-3	1,305	1,210

Supply Notes For March 20, 2016

- Notes: 1. Generation outages for running and corrective maintenance are included. These are not unusual for power system operations. They generally do not impact customer supply. The power system operators schedule outages to system equipment whenever possible to coincide with periods when customer demands are low and sufficient supply reserves are available. However, from time to time equipment outages are necessary and reserves may be impacted.
2. Due to the Island Interconnected System being isolated from the larger North American grid, when there is a sudden loss of large generating units some customer's load must be interrupted for short periods to bring generation output equal to customer demand. This automatic action of power system protection, referred to as under frequency load shedding, is necessary to ensure the integrity and reliability of system equipment. Under frequency events typically occur 5 to 8 times per year on the Island Interconnected System and the resultant customer load interruptions are generally less than 30 minutes.
3. As of 0800 Hours.
4. Gross output including station service at Holyrood (24.5 MW) and improved NLH hydraulic output due to water levels (35 MW).
5. Gross output from all island sources (including Note 4).
6. Adjusted for CBP&P interruptible load (when applicable) and the impact of voltage reduction.
7. NLH Power Purchases include: CBPP Co-Gen, Nalcor Exploits, Rattle Brook, Star Lake, Vale capacity assistance, and Wind Generation.

Section 3 Island Peak Demand Information Previous Day Actual Peak and Current Day Forecast Peak

Sat, Mar 19, 2016	Actual Island Peak Demand ⁸	20:25	1,307 MW
Sun, Mar 20, 2016	Forecast Island Peak Demand		1,405 MW

- Notes: 8. Island Demand is supplied by NLH generation and purchases, plus generation owned and operated by Newfoundland Power and Corner Brook Pulp & Paper (Deer Lake Power, DLP).