

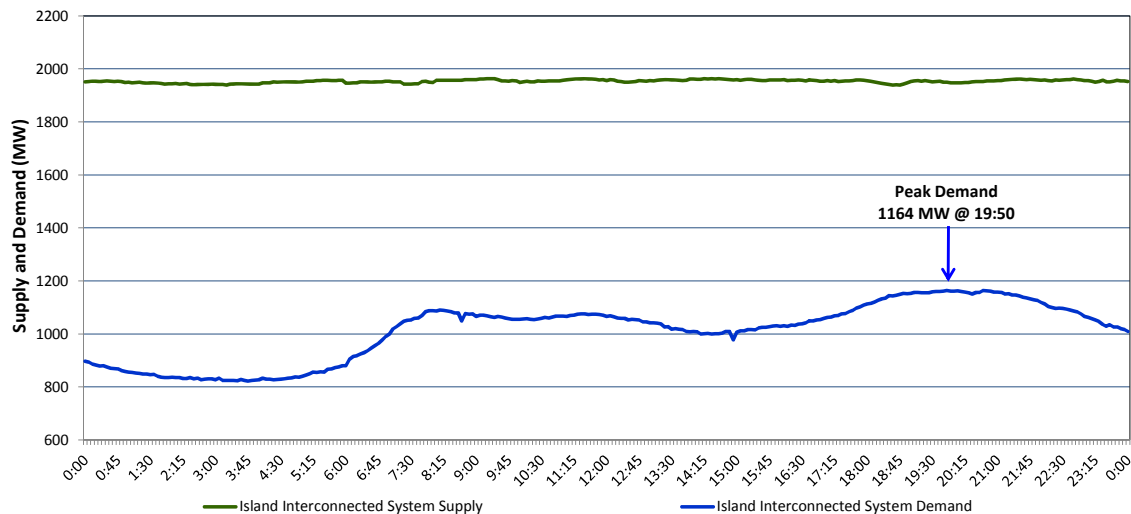
Newfoundland Labrador Hydro (NLH)

Supply and Demand Status Report Filed Wednesday, March 02, 2016

Section 1

Island Interconnected System Supply and Demand

Actual 24 Hour System Performance For Tuesday, March 01, 2016



Supply Notes For March 01, 2016

- A** As of 1956 hours, January 14, 2016, Nalcor Exploits Grand Falls Unit 7 unavailable. No net impact to the Island Interconnected System.
- B** As of 0710 hours, February 08, 2016, Holyrood Unit 2 derated to 120 MW (170 MW).
- C** As of 2010 hours, February 26, 2016, Holyrood Unit 1 derated to 120 MW (170 MW).
- D** As of 0732 hours, February 29, 2016, Hardwoods Gas Turbine derated to 38 MW (50 MW). End A 19 MW, End B 25 MW.
- E** At 0721 hours, March 01, 2016, Paradise River Unit unavailable (8 MW).
- F** At 0746 hours, March 01, 2016, Paradise River Unit available (8 MW).

1,2

Section 2

Island Interconnected Supply and Demand

Wed, Mar 02, 2016		Island System Outlook ³		Seven-Day Forecast		Temperature (°C)		Island System Daily Peak Demand (MW)	
						Morning	Evening	Forecast	Adjusted ⁶
Available Island System Supply: ⁵		1,925	MW	Wednesday, March 02, 2016		-4	-1	1,400	1,304
NLH Generation: ⁴		1,580	MW	Thursday, March 03, 2016		1	1	1,305	1,210
NLH Power Purchases: ⁷		140	MW	Friday, March 04, 2016		-5	-5	1,450	1,353
Other Island Generation:		205	MW	Saturday, March 05, 2016		-5	-3	1,360	1,264
Current St. John's Temperature:		-4	°C	Sunday, March 06, 2016		3	-4	1,375	1,279
Current St. John's Windchill:		-11	°C	Monday, March 07, 2016		-6	-4	1,520	1,422
7-Day Island Peak Demand Forecast:		1,520	MW	Tuesday, March 08, 2016		0	-1	1,335	1,239

Supply Notes For March 02, 2016

3

- Notes:
- Generation outages for running and corrective maintenance are included. These are not unusual for power system operations. They generally do not impact customer supply. The power system operators schedule outages to system equipment whenever possible to coincide with periods when customer demands are low and sufficient supply reserves are available. However, from time to time equipment outages are necessary and reserves may be impacted.
 - Due to the Island Interconnected System being isolated from the larger North American grid, when there is a sudden loss of large generating units some customer's load must be interrupted for short periods to bring generation output equal to customer demand. This automatic action of power system protection, referred to as under frequency load shedding, is necessary to ensure the integrity and reliability of system equipment. Under frequency events typically occur 5 to 8 times per year on the Island Interconnected System and the resultant customer load interruptions are generally less than 30 minutes.
 - As of 0800 Hours.
 - Gross output including station service at Holyrood (24.5 MW) and improved NLH hydraulic output due to water levels (35 MW).
 - Gross output from all Island sources (including Note 4).
 - Adjusted for CBP&P interruptible load (when applicable) and the impact of voltage reduction.
 - NLH Power Purchases include: CBPP Co-Gen, Nalcor Exploits, Rattle Brook, Star Lake, Vale capacity assistance, and Wind Generation.

Section 3

Island Peak Demand Information

Previous Day Actual Peak and Current Day Forecast Peak

Tue, Mar 01, 2016	Actual Island Peak Demand ⁸	19:50	1,164 MW
Wed, Mar 02, 2016	Forecast Island Peak Demand		1,400 MW

Notes: 8. Island Demand is supplied by NLH generation and purchases, plus generation owned and operated by Newfoundland Power and Corner Brook Pulp & Paper (Deer Lake Power, DLP).