

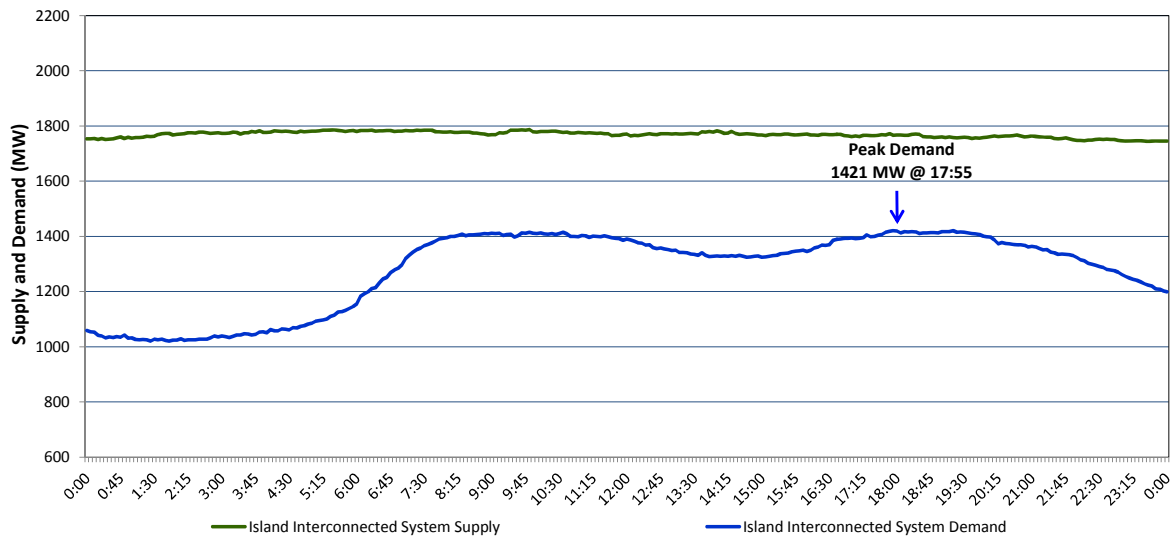
Newfoundland Labrador Hydro (NLH)

Supply and Demand Status Report Filed Monday, February 22, 2016

Section 1

Island Interconnected System Supply and Demand

Actual 24 Hour System Performance For Friday, February 19, 2016



Supply Notes For February 19, 2016

^{1,2}

- A** As of 1956 hours, January 14, 2016, Nalcor Exploits Grand Falls Unit 7 unavailable. No net impact to the Island Interconnected System.
- B** As of 0710 hours, February 08, 2016, Holyrood Unit 2 derated to 120 MW (170 MW).
- C** As of 0938 hours, February 14, 2015, Hardwoods Gas Turbine derated to 38MW (50MW). End A 19 MW, End B 25 MW.
- D** As of 2154 hours, February 16, 2016, Holyrood Unit 1 unavailable. Previously derated to 50 MW (170 MW).

Section 2

Island Interconnected Supply and Demand

Sat, Feb 20, 2016 Island System Outlook ³			Temperature (°C)		Island System Daily Peak Demand (MW)	
			Morning	Evening	Forecast	Adjusted ⁶
Available Island System Supply: ⁵	1,775	MW	Saturday, February 20, 2016		1,425	1,328
NLH Generation: ⁴	1,460	MW	Sunday, February 21, 2016		1,380	1,284
NLH Power Purchases: ⁷	130	MW	Monday, February 22, 2016		1,260	1,165
Other Island Generation:	185	MW	Tuesday, February 23, 2016		1,520	1,422
Current St. John's Temperature:	8	°C	Wednesday, February 24, 2016		1,520	1,422
Current St. John's Windchill:	-15	°C	Thursday, February 25, 2016		1,340	1,244
7-Day Island Peak Demand Forecast:	1,520	MW	Friday, February 26, 2016		1,260	1,165

Supply Notes For February 20, 2016

³

- Notes: 1. Generation outages for running and corrective maintenance are included. These are not unusual for power system operations. They generally do not impact customer supply. The power system operators schedule outages to system equipment whenever possible to coincide with periods when customer demands are low and sufficient supply reserves are available. However, from time to time equipment outages are necessary and reserves may be impacted.
2. Due to the Island Interconnected System being isolated from the larger North American grid, when there is a sudden loss of large generating units some customer's load must be interrupted for short periods to bring generation output equal to customer demand. This automatic action of power system protection, referred to as under frequency load shedding, is necessary to ensure the integrity and reliability of system equipment. Under frequency events typically occur 5 to 8 times per year on the Island Interconnected System and the resultant customer load interruptions are generally less than 30 minutes.
3. As of 0800 Hours.
4. Gross output including station service at Holyrood (24.5 MW) and improved NLH hydraulic output due to water levels (35 MW).
5. Gross output from all Island sources (including Note 4).
6. Adjusted for CBP&P interruptible load (when applicable) and the impact of voltage reduction.
7. NLH Power Purchases include: CBPP Co-Gen, Nalcor Exploits, Rattle Brook, Star Lake, Vale capacity assistance, and Wind Generation.

Section 3

Island Peak Demand Information

Previous Day Actual Peak and Current Day Forecast Peak

Fri, Feb 19, 2016	Actual Island Peak Demand ⁸	17:55	1,421 MW
Sat, Feb 20, 2016	Forecast Island Peak Demand		1,425 MW

Notes: 8. Island Demand is supplied by NLH generation and purchases, plus generation owned and operated by Newfoundland Power and Corner Brook Pulp & Paper (Deer Lake Power, DLP).