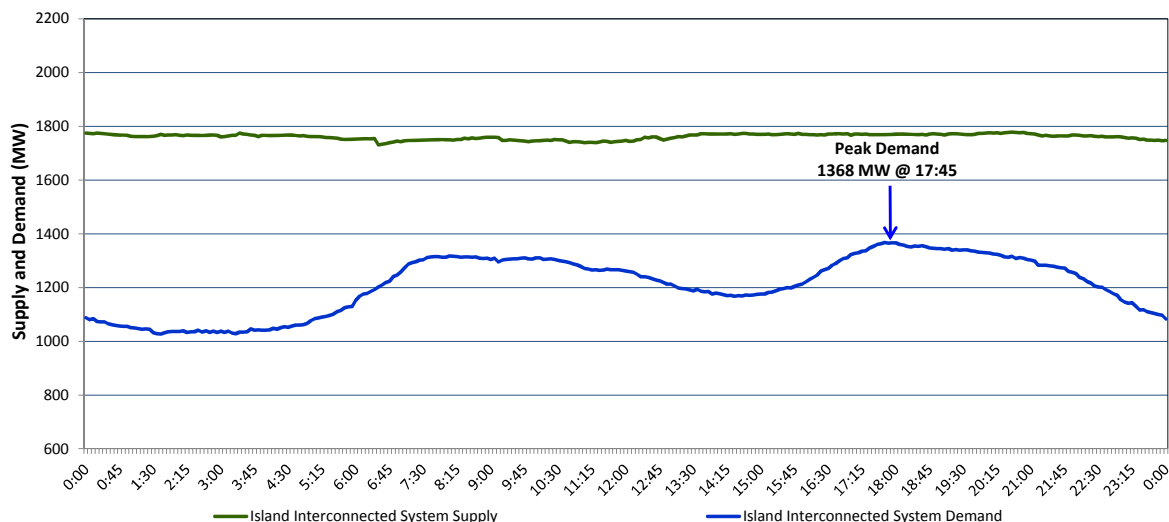


Newfoundland Labrador Hydro (NLH)

Supply and Demand Status Report Filed Thursday, February 11, 2016

Section 1 Island Interconnected System Supply and Demand Actual 24 Hour System Performance For Wednesday, February 10, 2016



Supply Notes For February 10, 2016

- A** As of 1956 hours, January 14, 2016, Nalcor Exploits Grand Falls Unit 7 unavailable. No net impact to the Island Interconnected System.
- B** As of 1116 hours, February 07, 2016, Holyrood Unit 1 derated to 50 MW (170 MW).
- C** As of 0710 hours, February 08, 2016, Holyrood Unit 2 derated to 120 MW (170 MW).
- D** As of 1524 hours, February 08, 2016, Hardwoods Gas Turbine End A unavailable (25 MW).
- E** At 0625 hours, February 10, 2016, Stephenville Gas Turbine End B unavailable (25 MW).

Section 2 Island Interconnected Supply and Demand

| Thu, Feb 11, 2016 Island System Outlook ³ | | | Seven-Day Forecast | | Temperature (°C) | | Island System Daily Peak Demand (MW) | |
|--|-------|----|------------------------------|--|------------------|---------|--------------------------------------|-------|
| | | | | | Morning | Evening | | |
| Available Island System Supply: ⁵ | 1,765 | MW | Thursday, February 11, 2016 | | -5 | -3 | 1,405 | 1,309 |
| NLH Generation: ⁴ | 1,475 | MW | Friday, February 12, 2016 | | -5 | -3 | 1,425 | 1,328 |
| NLH Power Purchases: ⁷ | 85 | MW | Saturday, February 13, 2016 | | -6 | -2 | 1,465 | 1,368 |
| Other Island Generation: | 205 | MW | Sunday, February 14, 2016 | | -4 | -2 | 1,395 | 1,299 |
| Current St. John's Temperature: | -3 | °C | Monday, February 15, 2016 | | -9 | -8 | 1,545 | 1,447 |
| Current St. John's Windchill: | -5 | °C | Tuesday, February 16, 2016 | | -5 | -2 | 1,470 | 1,373 |
| 7-Day Island Peak Demand Forecast: | 1,545 | MW | Wednesday, February 17, 2016 | | 3 | 8 | 1,275 | 1,180 |

Supply Notes For February 11, 2016

- Notes: 1. Generation outages for running and corrective maintenance are included. These are not unusual for power system operations. They generally do not impact customer supply. The power system operators schedule outages to system equipment whenever possible to coincide with periods when customer demands are low and sufficient supply reserves are available. However, from time to time equipment outages are necessary and reserves may be impacted.
2. Due to the Island Interconnected System being isolated from the larger North American grid, when there is a sudden loss of large generating units some customer's load must be interrupted for short periods to bring generation output equal to customer demand. This automatic action of power system protection, referred to as under frequency load shedding, is necessary to ensure the integrity and reliability of system equipment. Under frequency events typically occur 5 to 8 times per year on the Island Interconnected System and the resultant customer load interruptions are generally less than 30 minutes.
3. As of 0800 Hours.
4. Gross output including station service at Holyrood (24.5 MW) and improved NLH hydraulic output due to water levels (35 MW).
5. Gross output from all island sources (including Note 4).
6. Adjusted for CBP&P interruptible load (when applicable) and the impact of voltage reduction.
7. NLH Power Purchases include: CBPP Co-Gen, Nalcor Exploits, Rattle Brook, Star Lake, Vale capacity assistance, and Wind Generation.

Section 3 Island Peak Demand Information Previous Day Actual Peak and Current Day Forecast Peak

| | | | |
|-------------------|--|-------|----------|
| Wed, Feb 10, 2016 | Actual Island Peak Demand ⁸ | 17:45 | 1,368 MW |
| Thu, Feb 11, 2016 | Forecast Island Peak Demand | | 1,405 MW |

- Notes: 8. Island Demand is supplied by NLH generation and purchases, plus generation owned and operated by Newfoundland Power and Corner Brook Pulp & Paper (Deer Lake Power, DLP).