

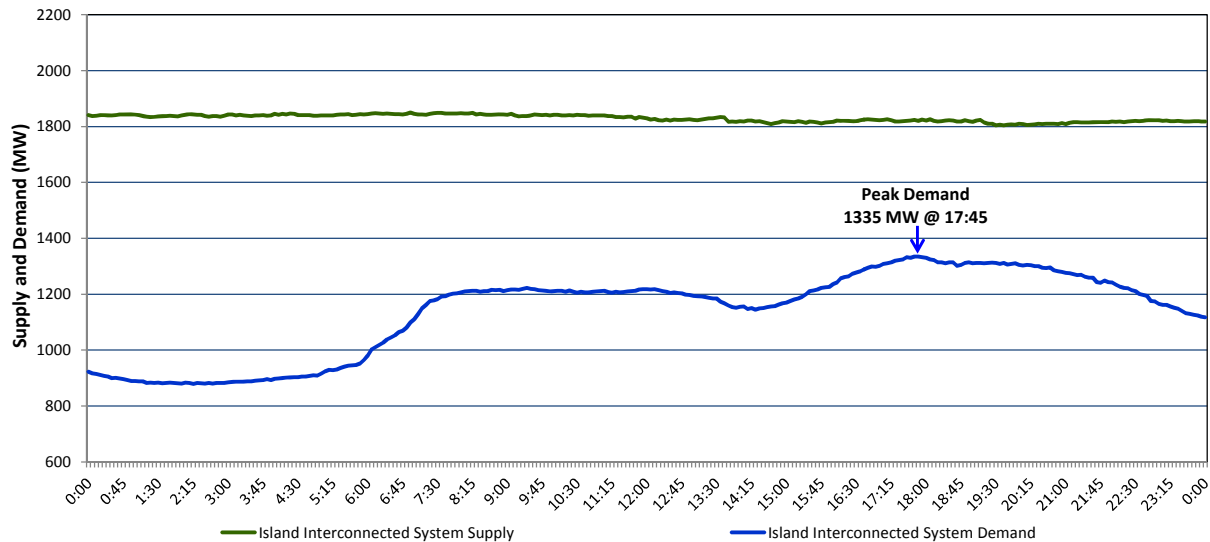
Newfoundland Labrador Hydro (NLH)

Supply and Demand Status Report Filed Wednesday, February 03, 2016

Section 1

Island Interconnected System Supply and Demand

Actual 24 Hour System Performance For Tuesday, February 02, 2016



Supply Notes For February 02, 2016

- A** As of 1956 hours, January 14, 2016, Nalcor Exploits Grand Falls Unit 7 unavailable. No net impact to the Island Interconnected System.
- B** As of 1538 hours, January 19, 2016, Holyrood Unit 2 unavailable. Previously derated to 70 MW (170 MW).

Section 2

Island Interconnected Supply and Demand

Wed, Feb 03, 2016 Island System Outlook ³		Seven-Day Forecast	Temperature (°C)		Island System Daily Peak Demand (MW)	
			Morning	Evening		
Available Island System Supply: ⁵	1,710 MW	Wednesday, February 03, 2016	-9	-7	1,525	1,427
NLH Generation: ⁴	1,405 MW	Thursday, February 04, 2016	-4	6	1,430	1,333
NLH Power Purchases: ⁷	105 MW	Friday, February 05, 2016	4	4	1,255	1,160
Other Island Generation:	200 MW	Saturday, February 06, 2016	0	-5	1,460	1,363
Current St. John's Temperature:	-9 °C	Sunday, February 07, 2016	-5	-4	1,370	1,274
Current St. John's Windchill:	-20 °C	Monday, February 08, 2016	-3	-5	1,445	1,348
7-Day Island Peak Demand Forecast:	1,525 MW	Tuesday, February 09, 2016	-1	0	1,400	1,304

Supply Notes For February 03, 2016

- C** At 0401 hours, February 03, 2016, Holyrood Unit 1 unavailable. Previously derated to 155 MW (170 MW).
- D** At 0556 hours, February 03, 2016, Holyrood Unit 1 available. Derated to 50 MW (170 MW).

- Notes:
- Generation outages for running and corrective maintenance are included. These are not unusual for power system operations. They generally do not impact customer supply. The power system operators schedule outages to system equipment whenever possible to coincide with periods when customer demands are low and sufficient supply reserves are available. However, from time to time equipment outages are necessary and reserves may be impacted.
 - Due to the Island Interconnected System being isolated from the larger North American grid, when there is a sudden loss of large generating units some customer's load must be interrupted for short periods to bring generation output equal to customer demand. This automatic action of power system protection, referred to as under frequency load shedding, is necessary to ensure the integrity and reliability of system equipment. Under frequency events typically occur 5 to 8 times per year on the Island Interconnected System and the resultant customer load interruptions are generally less than 30 minutes.
 - As of 0800 Hours.
 - Gross output including station service at Holyrood (24.5 MW) and improved NLH hydraulic output due to water levels (35 MW).
 - Gross output from all Island sources (including Note 4).
 - Adjusted for CBP&P interruptible load (when applicable) and the impact of voltage reduction.
 - NLH Power Purchases include: CBPP Co-Gen, Nalcor Exploits, Rattle Brook, Star Lake, Vale capacity assistance, and Wind Generation.

Section 3

Island Peak Demand Information

Previous Day Actual Peak and Current Day Forecast Peak

Tue, Feb 02, 2016	Actual Island Peak Demand ⁸	17:45	1,335 MW
Wed, Feb 03, 2016	Forecast Island Peak Demand		1,525 MW

- Notes: 8. Island Demand is supplied by NLH generation and purchases, plus generation owned and operated by Newfoundland Power and Corner Brook Pulp & Paper (Deer Lake Power, DLP).