

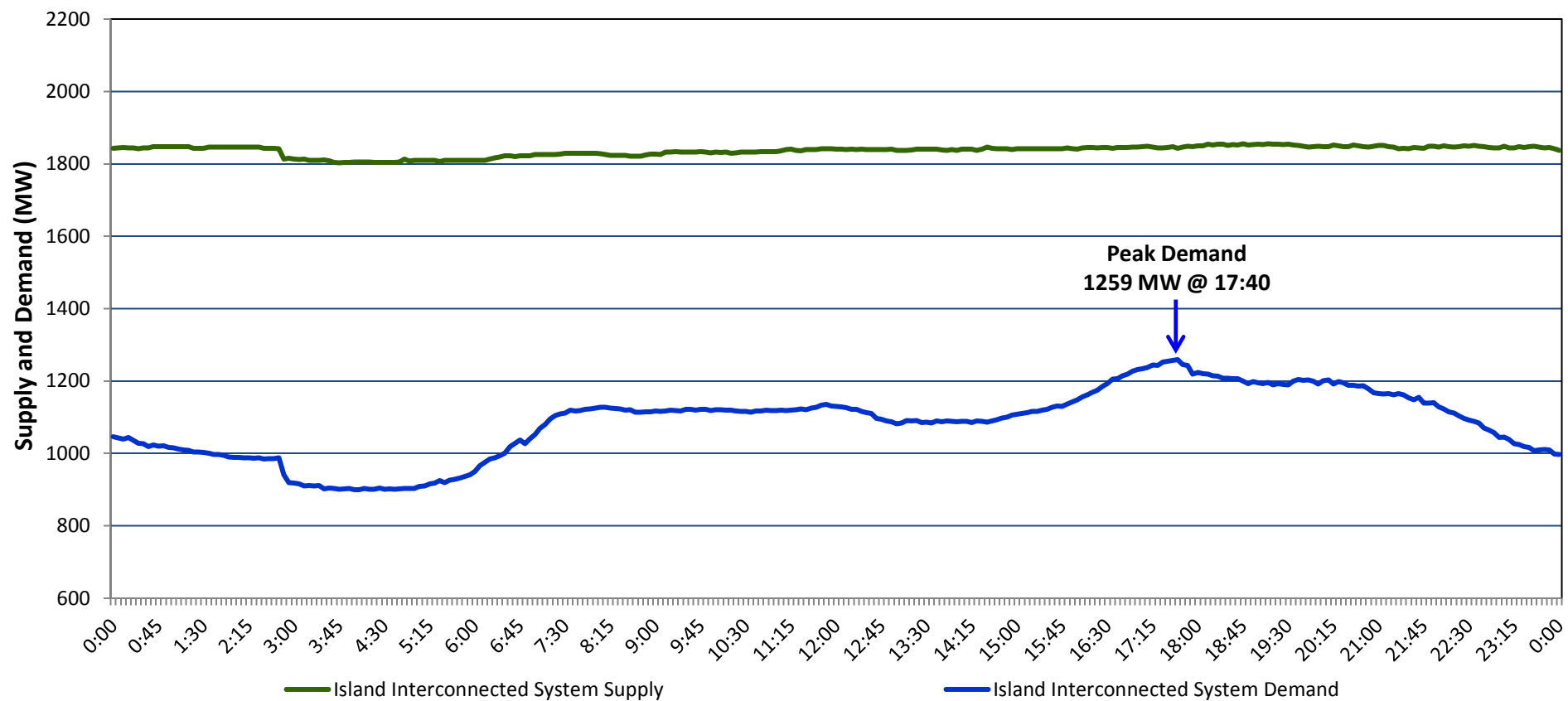
# Newfoundland Labrador Hydro (NLH)

## Supply and Demand Status Report Filed Thursday, January 28, 2016

### Section 1

#### Island Interconnected System Supply and Demand

#### Actual 24 Hour System Performance For Wednesday, January 27, 2016



#### Supply Notes For January 27, 2016

1,2

- A** As of 1437 hours, December 12, 2015, Holyrood Unit 1 available. Derated to 155 MW (170 MW).
- B** As of 1956 hours, January 14, 2016, Nalcor Exploits Grand Falls Unit 7 unavailable. No net impact to the Island Interconnected System.
- C** As of 1538 hours, January 19, 2016, Holyrood Unit 2 unavailable. Previously derated to 70 MW (170 MW).

### Section 2

#### Island Interconnected Supply and Demand

Thu, Jan 28, 2016      Island System Outlook <sup>3</sup>			Seven-Day Forecast		Temperature (°C)		Island System Daily Peak Demand (MW)	
					Morning	Evening	Forecast	Adjusted <sup>6</sup>
Available Island System Supply: <sup>5</sup>	1,835	MW	Thursday, January 28, 2016		-4	-4	1,430	1,333
NLH Generation: <sup>4</sup>	1,510	MW	Friday, January 29, 2016		-3	-1	1,385	1,289
NLH Power Purchases: <sup>7</sup>	125	MW	Saturday, January 30, 2016		3	-2	1,355	1,259
Other Island Generation:	200	MW	Sunday, January 31, 2016		-6	-4	1,390	1,294
Current St. John's Temperature:	-4	°C	Monday, February 01, 2016		0	0	1,335	1,239
Current St. John's Windchill:	-13	°C	Tuesday, February 02, 2016		0	-1	1,390	1,294
7-Day Island Peak Demand Forecast:	1,430	MW	Wednesday, February 03, 2016		-3	-6	1,425	1,328

#### Supply Notes For January 28, 2016

3

- Notes: 1. Generation outages for running and corrective maintenance are included. These are not unusual for power system operations. They generally do not impact customer supply. The power system operators schedule outages to system equipment whenever possible to coincide with periods when customer demands are low and sufficient supply reserves are available. However, from time to time equipment outages are necessary and reserves may be impacted.
2. Due to the Island Interconnected System being isolated from the larger North American grid, when there is a sudden loss of large generating units some customer's load must be interrupted for short periods to bring generation output equal to customer demand. This automatic action of power system protection, referred to as under frequency load shedding, is necessary to ensure the integrity and reliability of system equipment. Under frequency events typically occur 5 to 8 times per year on the Island Interconnected System and the resultant customer load interruptions are generally less than 30 minutes.
3. As of 0800 Hours.
4. Gross output including station service at Holyrood (24.5 MW) and improved NLH hydraulic output due to water levels (35 MW).
5. Gross output from all Island sources (including Note 4).
6. Adjusted for CBP&P interruptible load (when applicable) and the impact of voltage reduction.
7. NLH Power Purchases include: CBPP Co-Gen, Nalcor Exploits, Rattle Brook, Star Lake, Vale capacity assistance, and Wind Generation.

### Section 3

#### Island Peak Demand Information

#### Previous Day Actual Peak and Current Day Forecast Peak

Wed, Jan 27, 2016	Actual Island Peak Demand <sup>8</sup>	17:40	1,259 MW
Thu, Jan 28, 2016	Forecast Island Peak Demand		1,430 MW

Notes: 8. Island Demand is supplied by NLH generation and purchases, plus generation owned and operated by Newfoundland Power and Corner Brook Pulp & Paper (Deer Lake Power, DLP).