

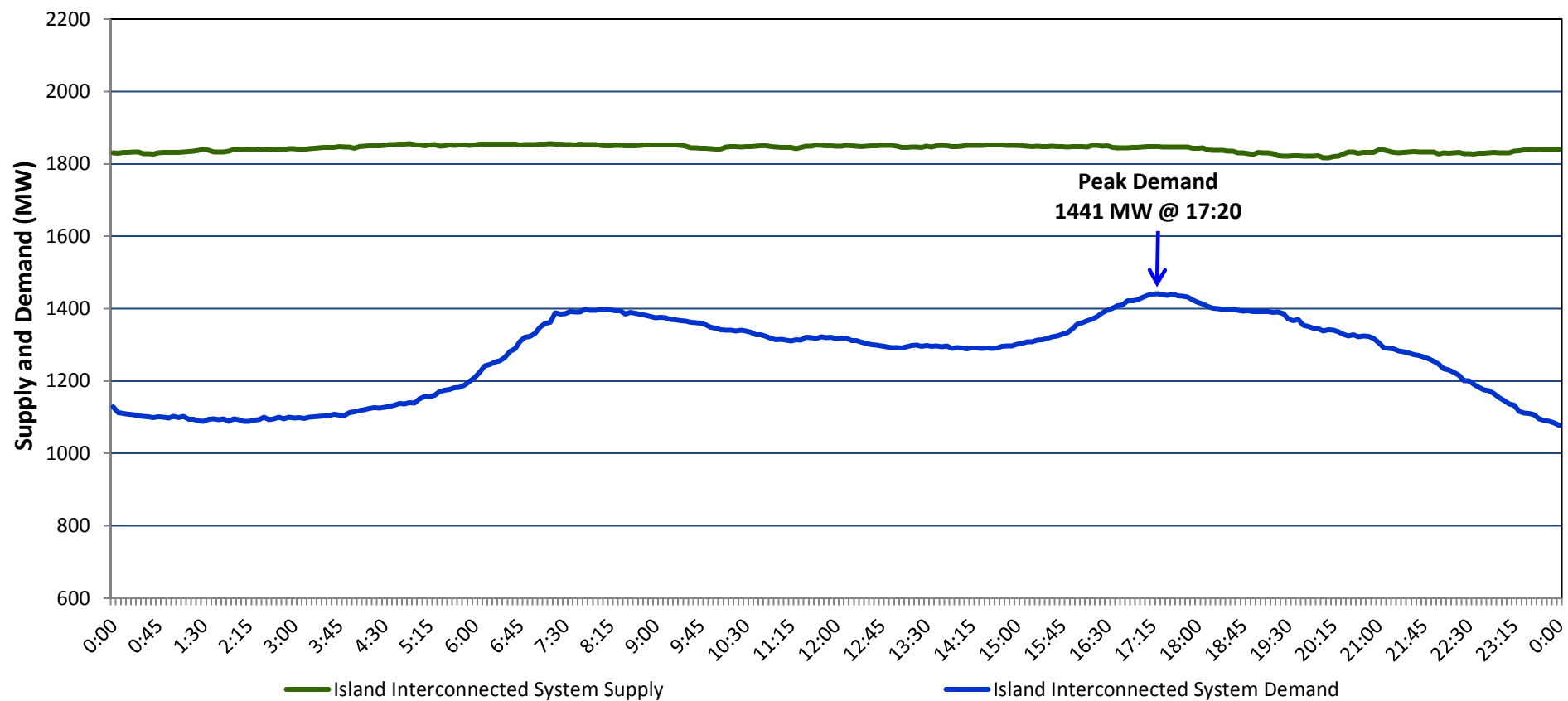
Newfoundland Labrador Hydro (NLH)

Supply and Demand Status Report Filed Thursday, January 21, 2016

Section 1

Island Interconnected System Supply and Demand

Actual 24 Hour System Performance For Wednesday, January 20, 2016



Supply Notes For January 20, 2016

1,2

- A** As of 1437 hours, December 12, 2015, Holyrood Unit 1 available. Derated to 155 MW (170 MW).
- B** As of 1956 hours, January 14, 2016, Nalcor Exploits Grand Falls Unit 7 unavailable. No net impact to the Island Interconnected System.
- C** As of 1538 hours, January 19, 2016, Holyrood Unit 2 unavailable. Previously derated to 70 MW (170 MW).

Section 2

Island Interconnected Supply and Demand

Thu, Jan 21, 2016 Island System Outlook ³			Seven-Day Forecast		Temperature (°C)		Island System Daily Peak Demand (MW)	
					Morning	Evening	Forecast	Adjusted ⁶
Available Island System Supply: ⁵	1,840	MW	Thursday, January 21, 2016		-4	-5	1,485	1,388
NLH Generation: ⁴	1,510	MW	Friday, January 22, 2016		-5	-4	1,505	1,407
NLH Power Purchases: ⁷	130	MW	Saturday, January 23, 2016		-5	-6	1,450	1,353
Other Island Generation:	200	MW	Sunday, January 24, 2016		-8	-4	1,385	1,289
Current St. John's Temperature:	-5	°C	Monday, January 25, 2016		-3	-4	1,485	1,388
Current St. John's Windchill:	-14	°C	Tuesday, January 26, 2016		-7	-7	1,475	1,378
7-Day Island Peak Demand Forecast:	1,505	MW	Wednesday, January 27, 2016		0	2	1,325	1,230

Supply Notes For January 21, 2016

3

- Notes: 1. Generation outages for running and corrective maintenance are included. These are not unusual for power system operations. They generally do not impact customer supply. The power system operators schedule outages to system equipment whenever possible to coincide with periods when customer demands are low and sufficient supply reserves are available. However, from time to time equipment outages are necessary and reserves may be impacted.
2. Due to the Island Interconnected System being isolated from the larger North American grid, when there is a sudden loss of large generating units some customer's load must be interrupted for short periods to bring generation output equal to customer demand. This automatic action of power system protection, referred to as under frequency load shedding, is necessary to ensure the integrity and reliability of system equipment. Under frequency events typically occur 5 to 8 times per year on the Island Interconnected System and the resultant customer load interruptions are generally less than 30 minutes.
3. As of 0800 Hours.
4. Gross output including station service at Holyrood (24.5 MW) and improved NLH hydraulic output due to water levels (35 MW).
5. Gross output from all Island sources (including Note 4).
6. Adjusted for CBP&P interruptible load (when applicable) and the impact of voltage reduction.
7. NLH Power Purchases include: CBPP Co-Gen, Nalcor Exploits, Rattle Brook, Star Lake, Vale capacity assistance, and Wind Generation.

Section 3

Island Peak Demand Information

Previous Day Actual Peak and Current Day Forecast Peak

Wed, Jan 20, 2016	Actual Island Peak Demand ⁸	17:20	1,441 MW
Thu, Jan 21, 2016	Forecast Island Peak Demand		1,485 MW

- Notes: 8. Island Demand is supplied by NLH generation and purchases, plus generation owned and operated by Newfoundland Power and Corner Brook Pulp & Paper (Deer Lake Power, DLP).