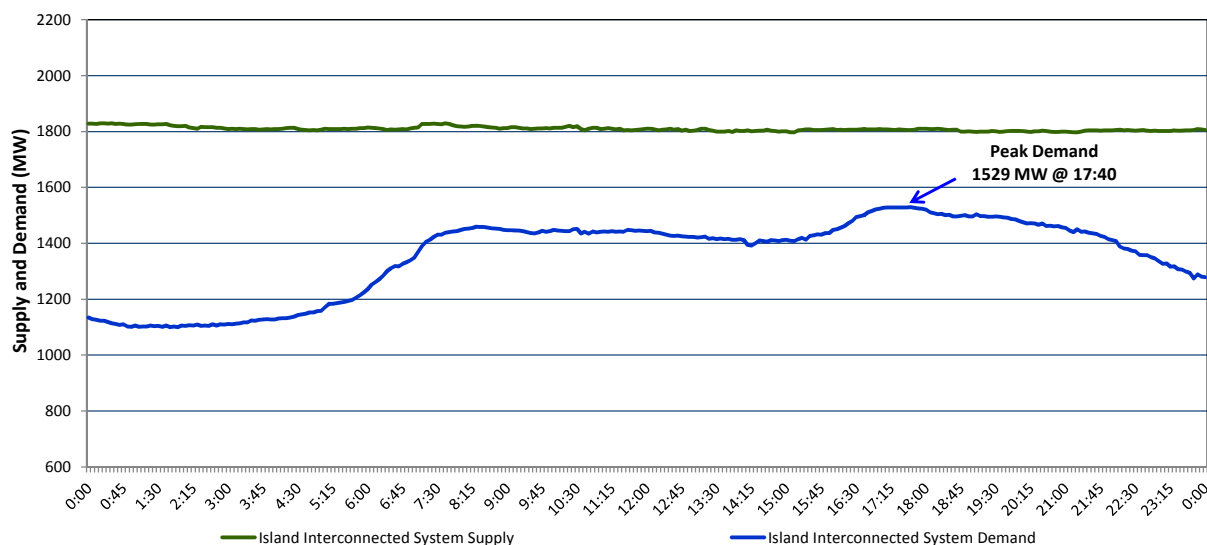


## Newfoundland Labrador Hydro (NLH) Supply and Demand Status Report Filed Monday, January 11, 2016

### Section 1 Island Interconnected System Supply and Demand Actual 24 Hour System Performance For Friday, January 08, 2016



#### Supply Notes For January 08, 2016

- 1,2
- A** As of 1200 hours, November 06, 2015, Nalcor Exploits Grand Falls Unit 7 unavailable. No net impact to the Island Interconnected System.
- B** As of 1437 hours, December 12, 2015, Holyrood Unit 1 available. Derated to 155 MW (170 MW).
- C** As of 0428 hours, January 06, 2016, Holyrood Unit 2 unavailable (170 MW).

### Section 2 Island Interconnected Supply and Demand

Sat, Jan 09, 2016	Island System Outlook <sup>3</sup>	Seven-Day Forecast	Temperature (°C)		Island System Daily Peak Demand (MW)	
			Morning	Evening	Forecast	Adjusted <sup>6</sup>
Available Island System Supply: <sup>5</sup>	1,845 MW	Saturday, January 09, 2016	-6	-3	1,445	1,348
NLH Generation: <sup>4</sup>	1,510 MW	Sunday, January 10, 2016	-3	-5	1,450	1,353
NLH Power Purchases:	120 MW	Monday, January 11, 2016	-3	1	1,435	1,338
Other Island Generation:	215 MW	Tuesday, January 12, 2016	2	-4	1,475	1,378
Current St. John's Temperature:	-6 °C	Wednesday, January 13, 2016	-6	-2	1,540	1,442
Current St. John's Windchill:	-14 °C	Thursday, January 14, 2016	2	-1	1,495	1,398
7-Day Island Peak Demand Forecast:	1,540 MW	Friday, January 15, 2016	-2	-3	1,440	1,343

#### Supply Notes For January 09, 2016

- 3
- Notes: 1. Generation outages for running and corrective maintenance are included. These are not unusual for power system operations. They generally do not impact customer supply. The power system operators schedule outages to system equipment whenever possible to coincide with periods when customer demands are low and sufficient supply reserves are available. However, from time to time equipment outages are necessary and reserves may be impacted.
2. Due to the Island Interconnected System being isolated from the larger North American grid, when there is a sudden loss of large generating units some customer's load must be interrupted for short periods to bring generation output equal to customer demand. This automatic action of power system protection, referred to as underfrequency load shedding, is necessary to ensure the integrity and reliability of system equipment. Underfrequency events typically occur 5 to 8 times per year on the Island Interconnected System and the resultant customer load interruptions are generally less than 30 minutes.
3. As of 0800 Hours.
4. Gross output including station service at Holyrood (24.5 MW) and improved NLH hydraulic output due to water levels (35 MW).
5. Gross output from all Island sources (including Note 4).
6. Adjusted for CBP&P interruptible load (when applicable) and the impact of voltage reduction.

### Section 3 Island Peak Demand Information Previous Day Actual Peak and Current Day Forecast Peak

Fri, Jan 08, 2016	Actual Island Peak Demand <sup>7</sup>	17:40	1,529 MW
Sat, Jan 09, 2016	Forecast Island Peak Demand		1,445 MW

- Notes: 7. Island Demand is supplied by NLH generation and purchases, plus generation owned and operated by Newfoundland Power and Corner Brook Pulp & Paper (Deer Lake Power, DLP).