

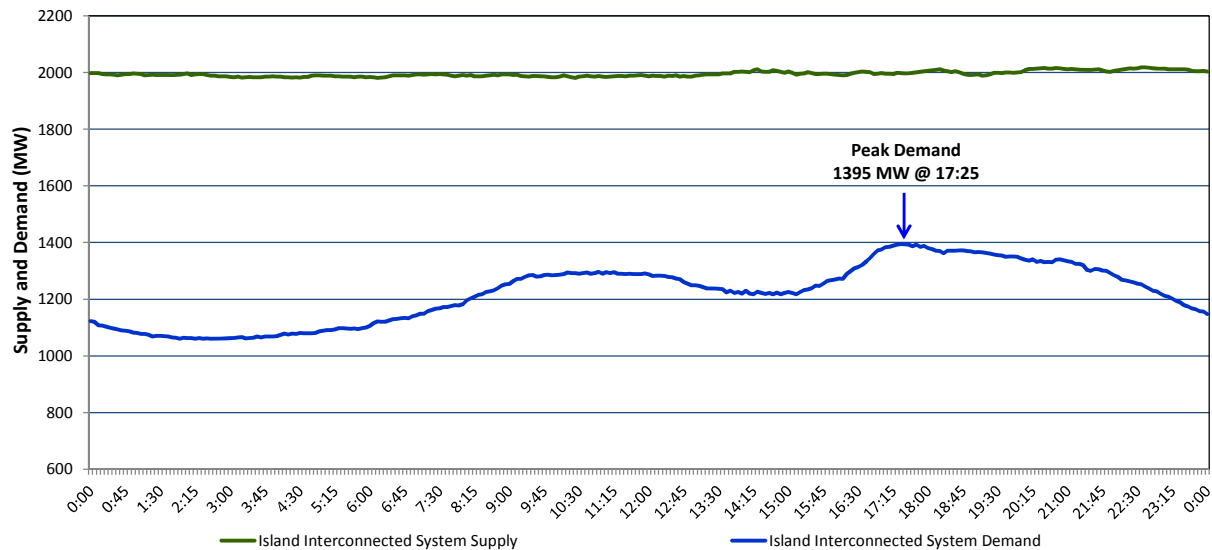
Newfoundland Labrador Hydro (NLH)

Supply and Demand Status Report Filed Monday, January 04, 2016

Section 1

Island Interconnected System Supply and Demand

Actual 24 Hour System Performance For Saturday, January 02, 2016



Supply Notes For January 02, 2016

1,2

- A** As of 1200 hours, November 06, 2015, Nalcor Exploits Grand Falls Unit 7 unavailable. No net impact to the Island Interconnected System.
- B** As of 1437 hours, December 12, 2015, Holyrood Unit 1 available. Derated to 155 MW (170 MW).

Section 2

Island Interconnected Supply and Demand

Sun, Jan 03, 2016 Island System Outlook ³		Seven-Day Forecast	Temperature (°C)		Island System Daily Peak Demand (MW)	
			Morning	Evening	Forecast	Adjusted ⁶
Available Island System Supply: ⁵	2,045 MW	Sunday, January 03, 2016	-2	-2	1,415	1,318
NLH Generation: ⁴	1,680 MW	Monday, January 04, 2016	2	-1	1,425	1,328
NLH Power Purchases:	155 MW	Tuesday, January 05, 2016	-9	-10	1,590	1,491
Other Island Generation:	210 MW	Wednesday, January 06, 2016	-9	-3	1,535	1,437
Current St. John's Temperature:	-1 °C	Thursday, January 07, 2016	-4	-4	1,495	1,398
Current St. John's Windchill:	-8 °C	Friday, January 08, 2016	-6	-6	1,520	1,422
7-Day Island Peak Demand Forecast:	1,590 MW	Saturday, January 09, 2016	-9	-4	1,550	1,452

Supply Notes For January 03, 2016

3

- Notes: 1. Generation outages for running and corrective maintenance are included. These are not unusual for power system operations. They generally do not impact customer supply. The power system operators schedule outages to system equipment whenever possible to coincide with periods when customer demands are low and sufficient supply reserves are available. However, from time to time equipment outages are necessary and reserves may be impacted.
2. Due to the Island Interconnected System being isolated from the larger North American grid, when there is a sudden loss of large generating units some customer's load must be interrupted for short periods to bring generation output equal to customer demand. This automatic action of power system protection, referred to as underfrequency load shedding, is necessary to ensure the integrity and reliability of system equipment. Underfrequency events typically occur 5 to 8 times per year on the Island Interconnected System and the resultant customer load interruptions are generally less than 30 minutes.
3. As of 0800 Hours.
4. Gross output including station service at Holyrood (24.5 MW) and improved NLH hydraulic output due to water levels (35 MW).
5. Gross output from all Island sources (including Note 4).
6. Adjusted for CBP&P interruptible load (when applicable) and the impact of voltage reduction.

Section 3

Island Peak Demand Information

Previous Day Actual Peak and Current Day Forecast Peak

Sat, Jan 02, 2016	Actual Island Peak Demand ⁷	17:25	1,395 MW
Sun, Jan 03, 2016	Forecast Island Peak Demand		1,415 MW

- Notes: 7. Island Demand is supplied by NLH generation and purchases, plus generation owned and operated by Newfoundland Power and Corner Brook Pulp & Paper (Deer Lake Power, DLP).