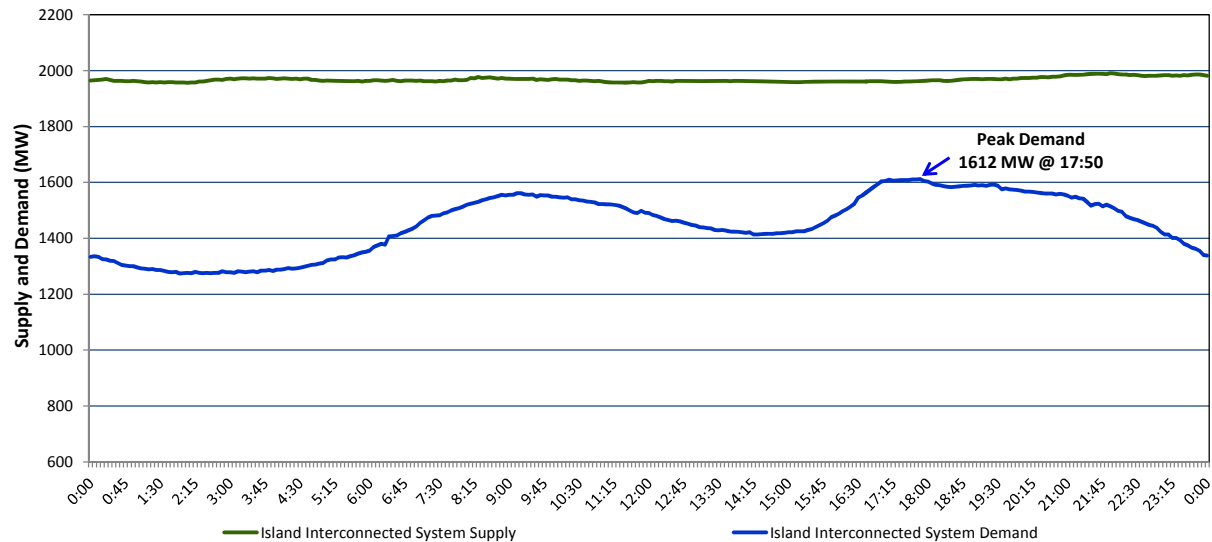


# Newfoundland Labrador Hydro (NLH) Supply and Demand Status Report Filed Thursday, December 31, 2015

## Section 1 Island Interconnected System Supply and Demand Actual 24 Hour System Performance For Wednesday, December 30, 2015



### Supply Notes For December 30, 2015

1,2

- A** As of 1200 hours, November 06, 2015, Nalcor Exploits Grand Falls Unit 7 unavailable. No net impact to the Island Interconnected System.
- B** As of 1437 hours, December 12, 2015, Holyrood Unit 1 available. Derated to 155 MW (170 MW).
- C** At 1417 hours, December 30, 2015, St. Anthony Diesel Unit 229 available (1 MW).

## Section 2 Island Interconnected Supply and Demand

Thu, Dec 31, 2015	Island System Outlook <sup>3</sup>	Seven-Day Forecast	Temperature (°C)		Island System Daily Peak Demand (MW)	
			Morning	Evening	Forecast	Adjusted <sup>6</sup>
Available Island System Supply: <sup>5</sup>	2,000 MW	Thursday, December 31, 2015	-9	-4	1,500	1,402
NLH Generation: <sup>4</sup>	1,680 MW	Friday, January 01, 2016	-2	-2	1,405	1,309
NLH Power Purchases:	105 MW	Saturday, January 02, 2016	-4	-3	1,440	1,343
Other Island Generation:	215 MW	Sunday, January 03, 2016	-3	-4	1,500	1,402
Current St. John's Temperature:	-7 °C	Monday, January 04, 2016	-5	-7	1,585	1,486
Current St. John's Windchill:	-16 °C	Tuesday, January 05, 2016	-8	-7	1,580	1,482
7-Day Island Peak Demand Forecast:	1,605 MW	Wednesday, January 06, 2016	-10	-8	1,605	1,506

### Supply Notes For December 31, 2015

3

- Notes: 1. Generation outages for running and corrective maintenance are included. These are not unusual for power system operations. They generally do not impact customer supply. The power system operators schedule outages to system equipment whenever possible to coincide with periods when customer demands are low and sufficient supply reserves are available. However, from time to time equipment outages are necessary and reserves may be impacted.
2. Due to the Island Interconnected System being isolated from the larger North American grid, when there is a sudden loss of large generating units some customer's load must be interrupted for short periods to bring generation output equal to customer demand. This automatic action of power system protection, referred to as underfrequency load shedding, is necessary to ensure the integrity and reliability of system equipment. Underfrequency events typically occur 5 to 8 times per year on the Island Interconnected System and the resultant customer load interruptions are generally less than 30 minutes.
3. As of 0800 Hours.
4. Gross output including station service at Holyrood (24.5 MW) and improved NLH hydraulic output due to water levels (35 MW).
5. Gross output from all Island sources (including Note 4).
6. Adjusted for CBP&P interruptible load (when applicable) and the impact of voltage reduction.

## Section 3 Island Peak Demand Information Previous Day Actual Peak and Current Day Forecast Peak

Wed, Dec 30, 2015	Actual Island Peak Demand <sup>7</sup>	17:50	1,612 MW
Thu, Dec 31, 2015	Forecast Island Peak Demand		1,500 MW

- Notes: 7. Island Demand is supplied by NLH generation and purchases, plus generation owned and operated by Newfoundland Power and Corner Brook Pulp & Paper (Deer Lake Power, DLP).