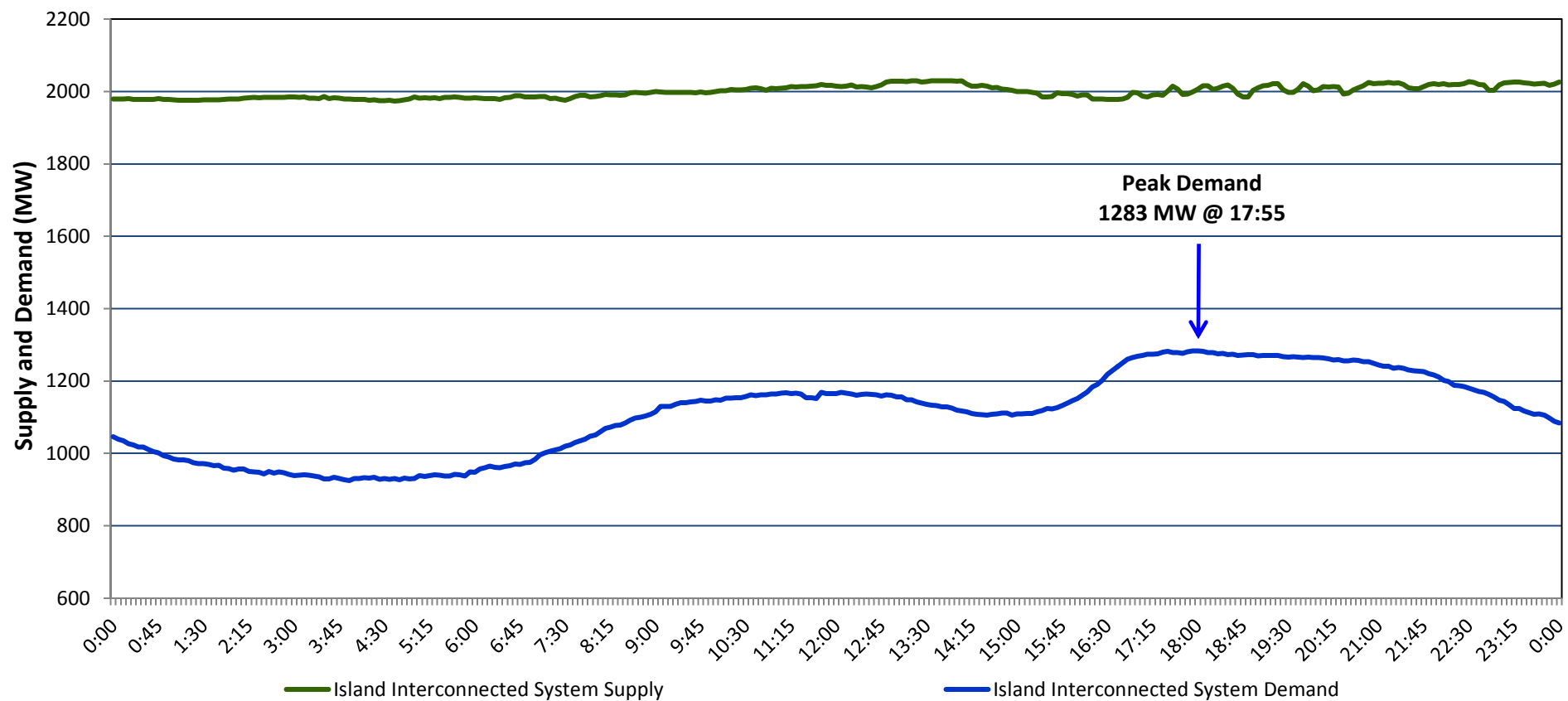


**Newfoundland Labrador Hydro (NLH)
Supply and Demand Status Report Filed Monday, December 21, 2015**

**Section 1
Island Interconnected System Supply and Demand
Actual 24 Hour System Performance For Saturday, December 19, 2015**



Supply Notes For December 19, 2015

- A As of 1200 hours, November 06, 2015, Nalcor Exploits Grand Falls Unit 7 unavailable. No net impact to the Island Interconnected System.
- B As of 1437 hours, December 12, 2015, Holyrood Unit 1 available. Derated to 155 MW (170 MW).
- C As of 1000 hours, December 15, 2015, St. Anthony Diesel Unit 229 unavailable (1 MW).

**Section 2
Island Interconnected Supply and Demand**

Sun, Dec 20, 2015	Island System Outlook ³	Seven-Day Forecast	Temperature (°C)		Island System Daily Peak Demand (MW)	
			Morning	Evening	Forecast	Adjusted ⁶
Available Island System Supply: ⁵	2,025 MW	Sunday, December 20, 2015	-1	-2	1,420	1,323
NLH Generation: ⁴	1,675 MW	Monday, December 21, 2015	-3	-2	1,445	1,348
NLH Power Purchases:	135 MW	Tuesday, December 22, 2015	-3	-6	1,465	1,368
Other Island Generation:	215 MW	Wednesday, December 23, 2015	-5	-3	1,435	1,338
Current St. John's Temperature:	-1 °C	Thursday, December 24, 2015	-1	1	1,385	1,289
Current St. John's Windchill:	-11 °C	Friday, December 25, 2015	1	3	1,315	1,220
7-Day Island Peak Demand Forecast:	1,465 MW	Saturday, December 26, 2015	2	-2	1,380	1,284

Supply Notes For December 20, 2015

- Notes:
1. Generation outages for running and corrective maintenance are included. These are not unusual for power system operations. They generally do not impact customer supply. The power system operators schedule outages to system equipment whenever possible to coincide with periods when customer demands are low and sufficient supply reserves are available. However, from time to time equipment outages are necessary and reserves may be impacted.
 2. Due to the Island Interconnected System being isolated from the larger North American grid, when there is a sudden loss of large generating units some customer's load must be interrupted for short periods to bring generation output equal to customer demand. This automatic action of power system protection, referred to as underfrequency load shedding, is necessary to ensure the integrity and reliability of system equipment. Underfrequency events typically occur 5 to 8 times per year on the Island Interconnected System and the resultant customer load interruptions are generally less than 30 minutes.
 3. As of 0800 Hours.
 4. Gross output including station service at Holyrood (24.5 MW) and improved NLH hydraulic output due to water levels (35 MW).
 5. Gross output from all Island sources (including Note 4).
 6. Adjusted for CBP&P interruptible load (when applicable) and the impact of voltage reduction.

**Section 3
Island Peak Demand Information
Previous Day Actual Peak and Current Day Forecast Peak**

Sat, Dec 19, 2015	Actual Island Peak Demand ⁷	17:55	1,283 MW
Sun, Dec 20, 2015	Forecast Island Peak Demand		1,420 MW

- Notes: 7. Island Demand is supplied by NLH generation and purchases, plus generation owned and operated by Newfoundland Power and Corner Brook Pulp & Paper (Deer Lake Power, DLP).