

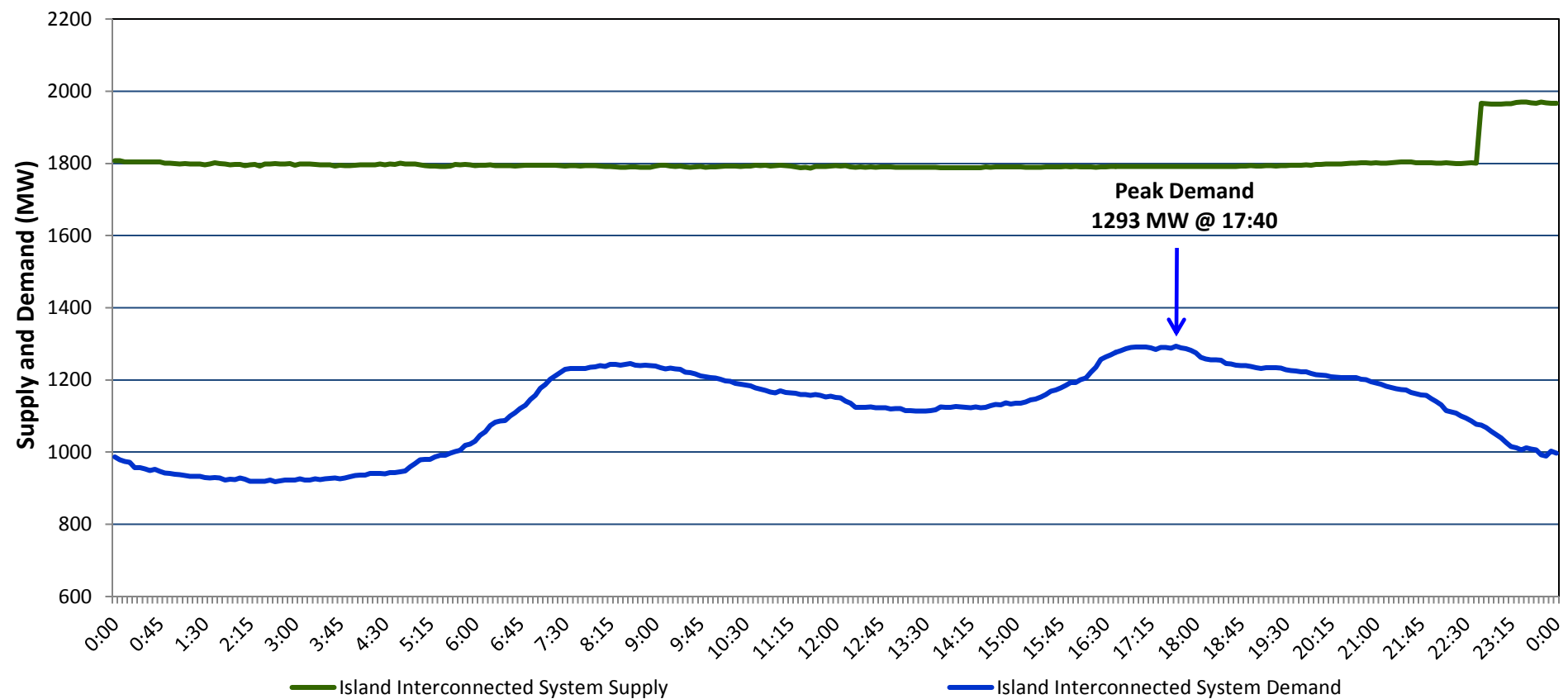
Newfoundland Labrador Hydro (NLH)

Supply and Demand Status Report Filed Friday, December 11, 2015

Section 1

Island Interconnected System Supply and Demand

Actual 24 Hour System Performance For Thursday, December 10, 2015



Supply Notes For December 10, 2015

1,2

- A** As of 1200 hours, November 06, 2015, Nalcor Exploits Grand Falls Unit 7 unavailable. No net impact to the Island Interconnected System.
- B** At 1818 hours, December 10, 2015, St. Anthony Diesel Unit 544 available (2 MW).
- C** At 2242 hours, December 10, 2015, Holyrood Unit 2 available (170 MW).

Section 2

Island Interconnected Supply and Demand

Fri, Dec 11, 2015			Island System Outlook ³		Seven-Day Forecast		Temperature (°C)		Island System Daily Peak Demand (MW)	
							Morning	Evening	Forecast	Adjusted ⁶
Available Island System Supply: ⁵			1,820	MW	Friday, December 11, 2015		2	3	1,240	1,156
NLH Generation: ⁴			1,525	MW	Saturday, December 12, 2015		4	4	1,225	1,141
NLH Power Purchases:			90	MW	Sunday, December 13, 2015		1	-1	1,340	1,254
Other Island Generation:			205	MW	Monday, December 14, 2015		-2	-2	1,450	1,363
Current St. John's Temperature:			2	°C	Tuesday, December 15, 2015		-2	-1	1,410	1,324
Current St. John's Windchill:			N/A	°C	Wednesday, December 16, 2015		-1	-1	1,410	1,324
7-Day Island Peak Demand Forecast:			1,450	MW	Thursday, December 17, 2015		-1	0	1,300	1,215

Supply Notes For December 11, 2015

3

- D** At 0246 hours, December 11, 2015, Holyrood Unit 1 unavailable. Previously derated to 155 MW (170 MW).

- Notes:
1. Generation outages for running and corrective maintenance are included. These are not unusual for power system operations. They generally do not impact customer supply. The power system operators schedule outages to system equipment whenever possible to coincide with periods when customer demands are low and sufficient supply reserves are available. However, from time to time equipment outages are necessary and reserves may be impacted.
 2. Due to the Island Interconnected System being isolated from the larger North American grid, when there is a sudden loss of large generating units some customer's load must be interrupted for short periods to bring generation output equal to customer demand. This automatic action of power system protection, referred to as underfrequency load shedding, is necessary to ensure the integrity and reliability of system equipment. Underfrequency events typically occur 5 to 8 times per year on the Island Interconnected System and the resultant customer load interruptions are generally less than 30 minutes.
 3. As of 0800 Hours.
 4. Gross output including station service at Holyrood (24.5 MW) and improved NLH hydraulic output due to water levels (35 MW).
 5. Gross output from all Island sources (including Note 4).
 6. Adjusted for CBP&P interruptible load (when applicable) and the impact of voltage reduction.

Section 3

Island Peak Demand Information

Previous Day Actual Peak and Current Day Forecast Peak

Thu, Dec 10, 2015	Actual Island Peak Demand ⁷	17:40	1,293 MW
Fri, Dec 11, 2015	Forecast Island Peak Demand		1,240 MW

- Notes: 7. Island Demand is supplied by NLH generation and purchases, plus generation owned and operated by Newfoundland Power and Corner Brook Pulp & Paper (Deer Lake Power, DLP).