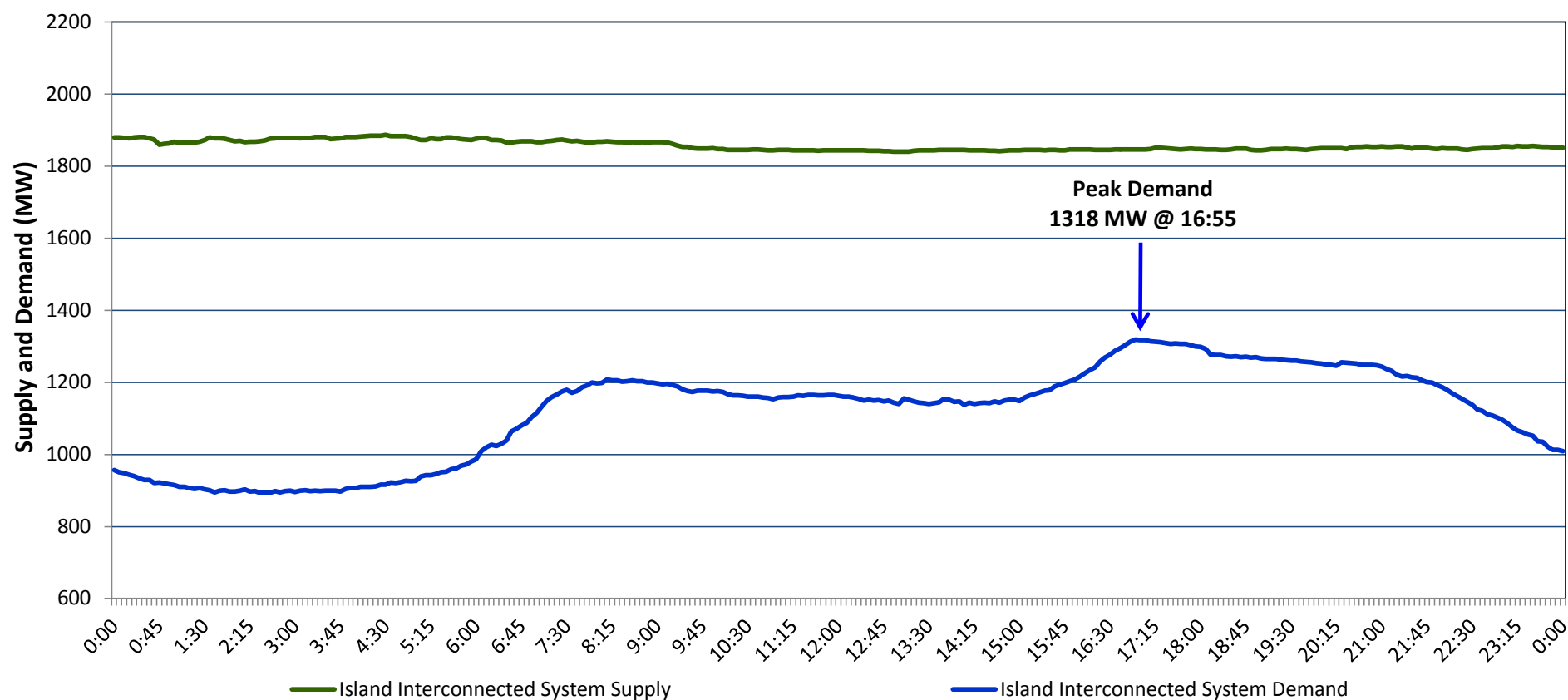


**Newfoundland Labrador Hydro (NLH)**  
**Supply and Demand Status Report Filed Wednesday, December 09, 2015**

**Section 1**  
**Island Interconnected System Supply and Demand**  
**Actual 24 Hour System Performance For Tuesday, December 08, 2015**



**Supply Notes For December 08, 2015**

- A** As of 1200 hours, November 06, 2015, Nalcor Exploits Grand Falls Unit 7 unavailable. No net impact to the Island Interconnected System.
- B** As of 0143 hours, December 04, 2015, Holyrood Unit 1 available. Derated to 155 MW (170 MW).
- C** As of 0800 hours, December 06, 2015, Holyrood Combustion Turbine unavailable (123.5 MW).
- D** At 0824 hours, December 08, 2015, St. Anthony Diesel Unit 544 unavailable (2 MW).
- E** At 1058 hours, December 08, 2015, St. Anthony Diesel Unit 546 available (2 MW).

**Section 2**  
**Island Interconnected Supply and Demand**

Wed, Dec 09, 2015      Island System Outlook <sup>3</sup>			Seven-Day Forecast		Temperature (°C)		Island System Daily Peak Demand (MW)	
					Morning	Evening		
Available Island System Supply: <sup>5</sup>	1,855	MW	Wednesday, December 09, 2015		-1	-2	1,365	1,279
NLH Generation: <sup>4</sup>	1,545	MW	Thursday, December 10, 2015		-2	-1	1,365	1,279
NLH Power Purchases:	120	MW	Friday, December 11, 2015		0	0	1,260	1,175
Other Island Generation:	190	MW	Saturday, December 12, 2015		1	4	1,255	1,170
Current St. John's Temperature:	-1	°C	Sunday, December 13, 2015		3	0	1,285	1,200
Current St. John's Windchill:	-6	°C	Monday, December 14, 2015		-1	-1	1,335	1,249
7-Day Island Peak Demand Forecast:	1,435	MW	Tuesday, December 15, 2015		-1	3	1,435	1,348

**Supply Notes For December 09, 2015**

- F** At 0742 hours, December 09, 2015, Paradise River Unit unavailable (8 MW).

- Notes:
1. Generation outages for running and corrective maintenance are included. These are not unusual for power system operations. They generally do not impact customer supply. The power system operators schedule outages to system equipment whenever possible to coincide with periods when customer demands are low and sufficient supply reserves are available. However, from time to time equipment outages are necessary and reserves may be impacted.
  2. Due to the Island Interconnected System being isolated from the larger North American grid, when there is a sudden loss of large generating units some customer's load must be interrupted for short periods to bring generation output equal to customer demand. This automatic action of power system protection, referred to as underfrequency load shedding, is necessary to ensure the integrity and reliability of system equipment. Underfrequency events typically occur 5 to 8 times per year on the Island Interconnected System and the resultant customer load interruptions are generally less than 30 minutes.
  3. As of 0800 Hours.
  4. Gross output including station service at Holyrood (24.5 MW) and improved NLH hydraulic output due to water levels (35 MW).
  5. Gross output from all Island sources (including Note 4).
  6. Adjusted for CBP&P interruptible load (when applicable) and the impact of voltage reduction.

**Section 3**  
**Island Peak Demand Information**  
**Previous Day Actual Peak and Current Day Forecast Peak**

Tue, Dec 08, 2015	Actual Island Peak Demand <sup>7</sup>	16:55	1,318 MW
Wed, Dec 09, 2015	Forecast Island Peak Demand		1,365 MW

Notes: 7. Island Demand is supplied by NLH generation and purchases, plus generation owned and operated by Newfoundland Power and Corner Brook Pulp & Paper (Deer Lake Power, DLP).