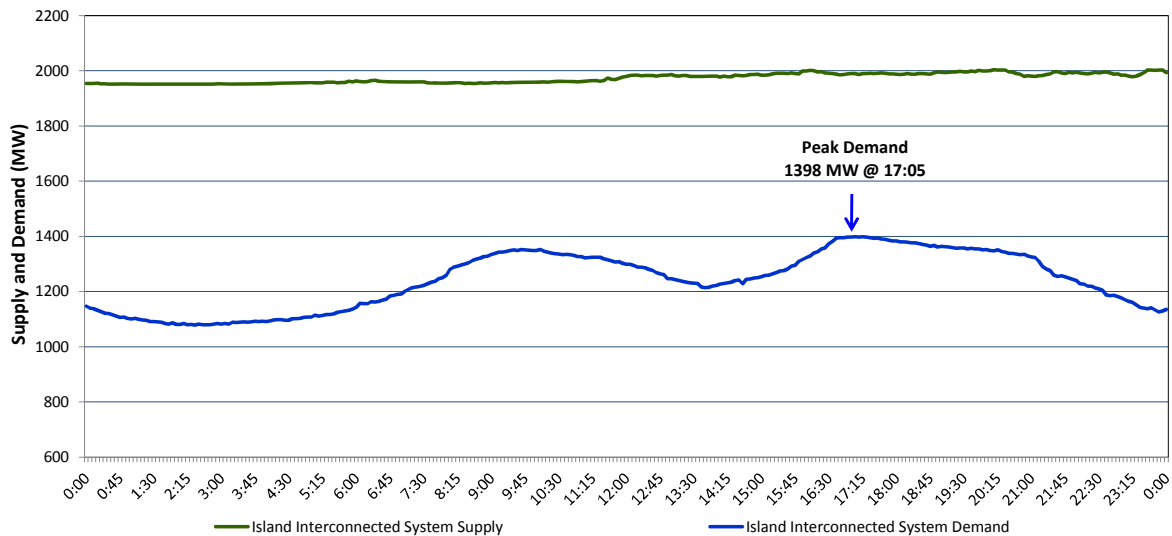


## Newfoundland Labrador Hydro (NLH) Supply and Demand Status Report Filed Monday, December 07, 2015

### Section 1 Island Interconnected System Supply and Demand Actual 24 Hour System Performance For Saturday, December 05, 2015



#### Supply Notes For December 05, 2015

1,2

- A** As of 1200 hours, November 06, 2015, Nalcor Exploits Grand Falls Unit 7 unavailable. No net impact to the Island Interconnected System.
- B** As of 0927 hours, November 30, 2015, St. Anthony Diesel Unit 546 unavailable (2 MW).

### Section 2 Island Interconnected Supply and Demand

Sun, Dec 06, 2015      Island System Outlook <sup>3</sup>			Temperature (°C)		Island System Daily Peak Demand (MW)	
			Morning	Evening	Forecast	Adjusted <sup>6</sup>
Available Island System Supply: <sup>5</sup>	1,965	MW	Sunday, December 06, 2015		1,340	1,254
NLH Generation: <sup>4</sup>	1,675	MW	Monday, December 07, 2015		1,330	1,244
NLH Power Purchases:	100	MW	Tuesday, December 08, 2015		1,315	1,230
Other Island Generation:	190	MW	Wednesday, December 09, 2015		1,400	1,314
Current St. John's Temperature:	-5	°C	Thursday, December 10, 2015		1,320	1,235
Current St. John's Windchill:	-11	°C	Friday, December 11, 2015		1,290	1,205
7-Day Island Peak Demand Forecast:	1,400	MW	Saturday, December 12, 2015		1,180	1,096

#### Supply Notes For December 06, 2015

3

- Notes: 1. Generation outages for running and corrective maintenance are included. These are not unusual for power system operations. They generally do not impact customer supply. The power system operators schedule outages to system equipment whenever possible to coincide with periods when customer demands are low and sufficient supply reserves are available. However, from time to time equipment outages are necessary and reserves may be impacted.
2. Due to the Island Interconnected System being isolated from the larger North American grid, when there is a sudden loss of large generating units some customer's load must be interrupted for short periods to bring generation output equal to customer demand. This automatic action of power system protection, referred to as underfrequency load shedding, is necessary to ensure the integrity and reliability of system equipment. Underfrequency events typically occur 5 to 8 times per year on the Island Interconnected System and the resultant customer load interruptions are generally less than 30 minutes.
3. As of 0800 Hours.
4. Gross output including station service at Holyrood (24.5 MW) and improved NLH hydraulic output due to water levels (35 MW).
5. Gross output from all Island sources (including Note 4).
6. Adjusted for CBP&P interruptible load (when applicable) and the impact of voltage reduction.

### Section 3 Island Peak Demand Information Previous Day Actual Peak and Current Day Forecast Peak

Sat, Dec 05, 2015	Actual Island Peak Demand <sup>7</sup>	17:05	1,398 MW
Sun, Dec 06, 2015	Forecast Island Peak Demand		1,340 MW

Notes: 7. Island Demand is supplied by NLH generation and purchases, plus generation owned and operated by Newfoundland Power and Corner Brook Pulp & Paper (Deer Lake Power, DLP).