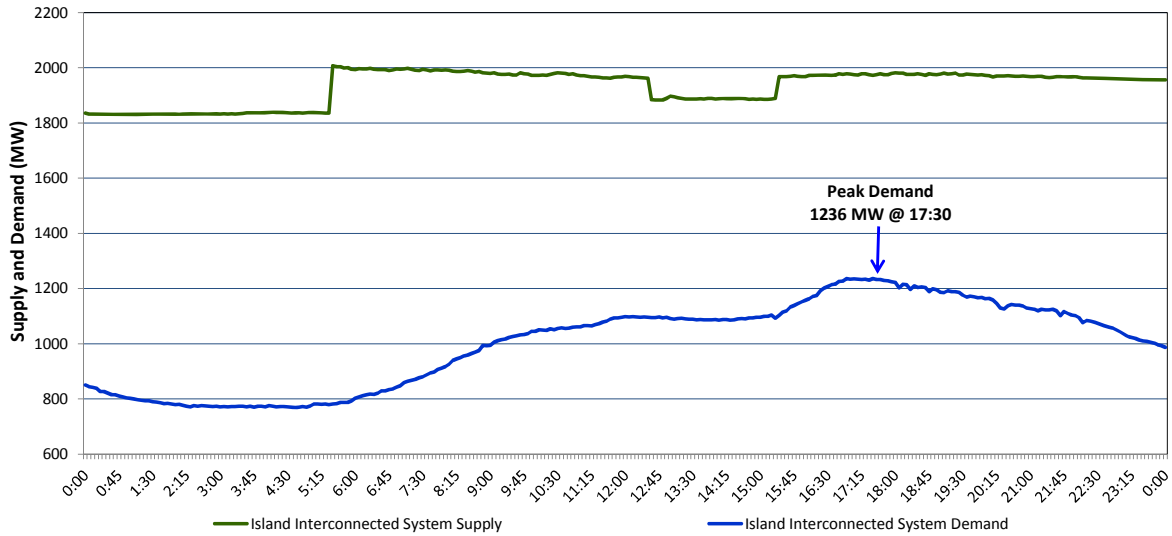


## Newfoundland Labrador Hydro (NLH) Supply and Demand Status Report Filed Monday, November 30, 2015

### Section 1 Island Interconnected System Supply and Demand Actual 24 Hour System Performance For Saturday, November 28, 2015



#### Supply Notes For November 28, 2015 <sup>1,2</sup>

- A As of 1200 hours, November 06, 2015, Nalcor Exploits Grand Falls Unit 7 unavailable. No net impact to the Island Interconnected System.
- B As of 2201 hours, November 27, 2015, Holyrood Unit 1 available. Derated to 155 MW (170 MW).
- C At 0530 hours, November 28, 2015, Holyrood Unit 2 available (170 MW).
- D At 1232 hours, November 28, 2015, Bay d'Espoir Unit 4 unavailable (76.5 MW).
- E At 1520 hours, November 28, 2015, Bay d'Espoir Unit 4 available (76.5 MW).

### Section 2 Island Interconnected Supply and Demand

Sun, Nov 29, 2015	Island System Outlook <sup>3</sup>	Seven-Day Forecast	Temperature (°C)		Island System Daily Peak Demand (MW) Forecast
			Morning	Evening	
Available Island System Supply: <sup>5</sup>	1,960 MW	Sunday, November 29, 2015	1	-1	1,335
NLH Generation: <sup>4</sup>	1,680 MW	Monday, November 30, 2015	-6	-6	1,435
NLH Power Purchases:	90 MW	Tuesday, December 01, 2015	-6	0	1,470
Other Island Generation:	190 MW	Wednesday, December 02, 2015	0	4	1,265
Current St. John's Temperature:	-1 °C	Thursday, December 03, 2015	5	5	1,240
Current St. John's Windchill:	-4 °C	Friday, December 04, 2015	-3	-3	1,375
7-Day Island Peak Demand Forecast:	1,470 MW	Saturday, December 05, 2015	-2	0	1,205

#### Supply Notes For November 29, 2015 <sup>3</sup>

- Notes:
1. Generation outages for running and corrective maintenance are included. These are not unusual for power system operations. They generally do not impact customer supply. The power system operators schedule outages to system equipment whenever possible to coincide with periods when customer demands are low and sufficient supply reserves are available. However, from time to time equipment outages are necessary and reserves may be impacted.
  2. Due to the Island Interconnected System being isolated from the larger North American grid, when there is a sudden loss of large generating units some customer's load must be interrupted for short periods to bring generation output equal to customer demand. This automatic action of power system protection, referred to as underfrequency load shedding, is necessary to ensure the integrity and reliability of system equipment. Underfrequency events typically occur 5 to 8 times per year on the Island Interconnected System and the resultant customer load interruptions are generally less than 30 minutes.
  3. As of 0800 Hours.
  4. Gross output including station service at Holyrood (24.5 MW) and improved NLH hydraulic output due to water levels (35 MW).
  5. Gross output from all Island sources (including Note 4).

### Section 3 Island Peak Demand Information Previous Day Actual Peak and Current Day Forecast Peak

Sat, Nov 28, 2015	Actual Island Peak Demand <sup>7</sup>	17:30	1,236 MW
Sun, Nov 29, 2015	Forecast Island Peak Demand		1,335 MW

- Notes: 7. Island Demand is supplied by NLH generation and purchases, plus generation owned and operated by Newfoundland Power and Corner Brook Pulp & Paper (Deer Lake Power, DLP).