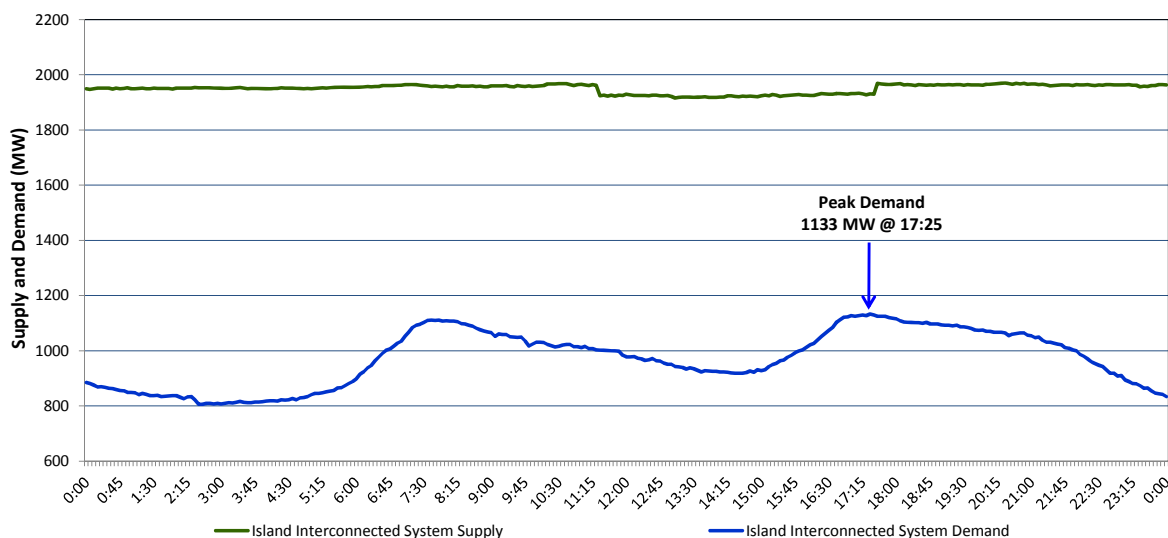


Newfoundland Labrador Hydro (NLH) Supply and Demand Status Report Filed Tuesday, November 24, 2015

Section 1 Island Interconnected System Supply and Demand Actual 24 Hour System Performance For Monday, November 23, 2015



Supply Notes For November 23, 2015

^{1,2}

A As of 1200 hours, November 06, 2015, Nalcor Exploits Grand Falls Unit 7 unavailable. No net impact to the Island Interconnected System.

B As of 0718 hours, November 20, 2015, Holyrood Unit 1 available. Derated to 155 MW (170 MW).

C At 1123 hours, November 23, 2015, Hardwoods Gas Turbine unavailable. Previously derated to 38MW (50 MW). End A 25MW, End B 19MW.

D At 1731 hours, November 23, 2015, Hardwoods Gas Turbine available. Derated to 38MW (50 MW). End A 25MW, End B 19MW.

Section 2 Island Interconnected Supply and Demand

Tue, Nov 24, 2015 Island System Outlook ³			Seven-Day Forecast		Temperature (°C)		Island System Daily Peak Demand (MW)
					Morning	Evening	Forecast
Available Island System Supply: ⁵	1,915	MW	Tuesday, November 24, 2015		8	4	1,180
NLH Generation: ⁴	1,590	MW	Wednesday, November 25, 2015		-1	-2	1,310
NLH Power Purchases:	120	MW	Thursday, November 26, 2015		-3	1	1,390
Other Island Generation:	205	MW	Friday, November 27, 2015		5	7	1,145
Current St. John's Temperature:	7	°C	Saturday, November 28, 2015		9	5	1,170
Current St. John's Windchill:	N/A	°C	Sunday, November 29, 2015		-4	-4	1,365
7-Day Island Peak Demand Forecast:	1,500	MW	Monday, November 30, 2015		-2	-5	1,500

Supply Notes For November 24, 2015

³

E At 0510 hours, November 24, 2015, Hardwoods Gas Turbine unavailable. Previously derated to 38MW (50 MW). End A 25MW, End B 19MW.

F At 0712 hours, November 24, 2015, Granite Canal Unit unavailable (40 MW).

- Notes:
1. Generation outages for running and corrective maintenance are included. These are not unusual for power system operations. They generally do not impact customer supply. The power system operators schedule outages to system equipment whenever possible to coincide with periods when customer demands are low and sufficient supply reserves are available. However, from time to time equipment outages are necessary and reserves may be impacted.
 2. Due to the Island Interconnected System being isolated from the larger North American grid, when there is a sudden loss of large generating units some customer's load must be interrupted for short periods to bring generation output equal to customer demand. This automatic action of power system protection, referred to as underfrequency load shedding, is necessary to ensure the integrity and reliability of system equipment. Underfrequency events typically occur 5 to 8 times per year on the Island Interconnected System and the resultant customer load interruptions are generally less than 30 minutes.
 3. As of 0800 Hours.
 4. Gross output including station service at Holyrood (24.5 MW) and improved NLH hydraulic output due to water levels (35 MW).
 5. Gross output from all Island sources (including Note 4).

Section 3 Island Peak Demand Information Previous Day Actual Peak and Current Day Forecast Peak

Mon, Nov 23, 2015	Actual Island Peak Demand ⁷	17:25	1,133 MW
Tue, Nov 24, 2015	Forecast Island Peak Demand		1,180 MW

Notes: 7. Island Demand is supplied by NLH generation and purchases, plus generation owned and operated by Newfoundland Power and Corner Brook Pulp & Paper (Deer Lake Power, DLP).