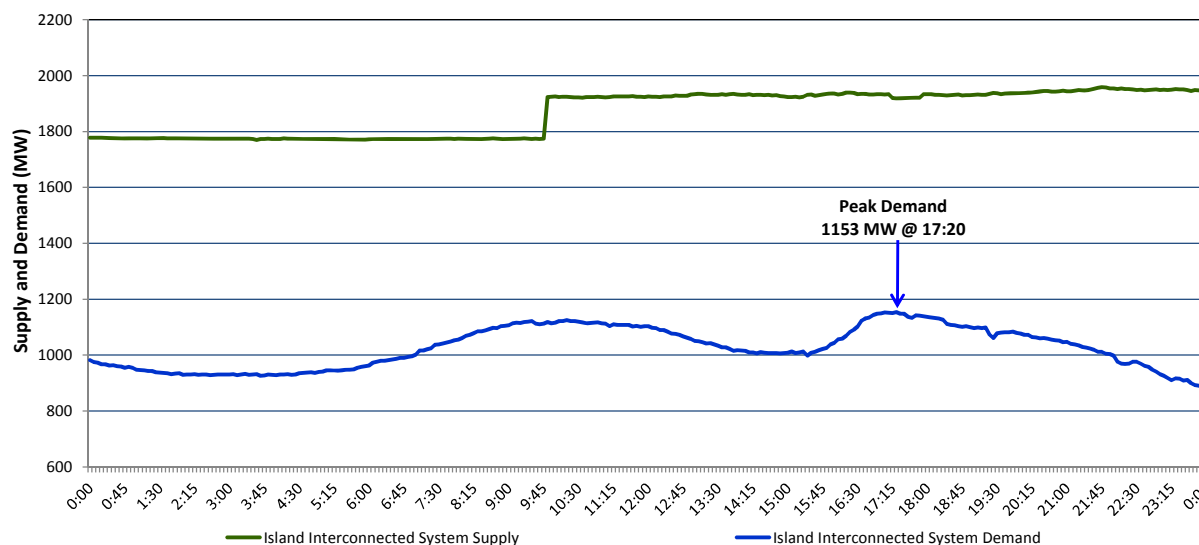


Newfoundland Labrador Hydro (NLH) Supply and Demand Status Report Filed Monday, November 23, 2015

Section 1 Island Interconnected System Supply and Demand Actual 24 Hour System Performance For Sunday, November 22, 2015



Supply Notes For November 22, 2015 ^{1,2}

- A As of 1327 hours, November 04, 2015, Hardwoods Gas Turbine derated to 38MW (50MW). End A 25MW, End B 19MW.
- B As of 1200 hours, November 06, 2015, Nalcor Exploits Grand Falls Unit 7 unavailable. No net impact to the Island Interconnected System.
- C As of 0718 hours, November 20, 2015, Holyrood Unit 1 available. Derated to 155 MW (170 MW).
- D At 0949 hours, November 22, 2015, Holyrood Unit 3 available (150 MW).

Section 2 Island Interconnected Supply and Demand

Mon, Nov 23, 2015	Island System Outlook ³	Seven-Day Forecast	Temperature (°C)		Island System Daily Peak Demand (MW) Forecast
			Morning	Evening	
Available Island System Supply: ⁵	1,990 MW	Monday, November 23, 2015	4	5	1,185
NLH Generation: ⁴	1,665 MW	Tuesday, November 24, 2015	8	6	1,145
NLH Power Purchases:	110 MW	Wednesday, November 25, 2015	-2	-2	1,360
Other Island Generation:	215 MW	Thursday, November 26, 2015	-3	0	1,340
Current St. John's Temperature:	4 °C	Friday, November 27, 2015	3	6	1,190
Current St. John's Windchill:	N/A °C	Saturday, November 28, 2015	8	6	1,120
7-Day Island Peak Demand Forecast:	1,450 MW	Sunday, November 29, 2015	-4	-7	1,450

Supply Notes For November 23, 2015 ³

- Notes:
1. Generation outages for running and corrective maintenance are included. These are not unusual for power system operations. They generally do not impact customer supply. The power system operators schedule outages to system equipment whenever possible to coincide with periods when customer demands are low and sufficient supply reserves are available. However, from time to time equipment outages are necessary and reserves may be impacted.
 2. Due to the Island Interconnected System being isolated from the larger North American grid, when there is a sudden loss of large generating units some customer's load must be interrupted for short periods to bring generation output equal to customer demand. This automatic action of power system protection, referred to as underfrequency load shedding, is necessary to ensure the integrity and reliability of system equipment. Underfrequency events typically occur 5 to 8 times per year on the Island Interconnected System and the resultant customer load interruptions are generally less than 30 minutes.
 3. As of 0800 Hours.
 4. Gross output including station service at Holyrood (24.5 MW) and improved NLH hydraulic output due to water levels (35 MW).
 5. Gross output from all Island sources (including Note 4).

Section 3 Island Peak Demand Information Previous Day Actual Peak and Current Day Forecast Peak

Sun, Nov 22, 2015	Actual Island Peak Demand ⁷	17:20	1,153 MW
Mon, Nov 23, 2015	Forecast Island Peak Demand		1,185 MW

- Notes: 7. Island Demand is supplied by NLH generation and purchases, plus generation owned and operated by Newfoundland Power and Corner Brook Pulp & Paper (Deer Lake Power, DLP).