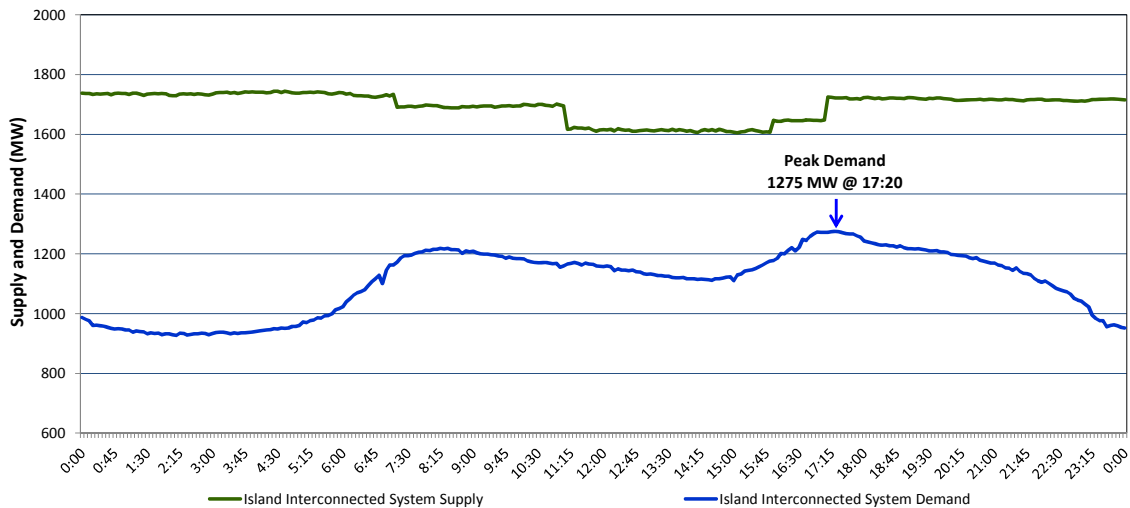


Newfoundland Labrador Hydro (NLH) Supply and Demand Status Report Filed Wednesday, November 18, 2015

Section 1 Island Interconnected System Supply and Demand Actual 24 Hour System Performance For Tuesday, November 17, 2015



Supply Notes For November 17, 2015

- 1,2
- A As of 1605 hours, September 27, 2015, Bay d'Espoir Unit 4 unavailable (76.5 MW).
 - B As of 1327 hours, November 04, 2015, Hardwoods Gas Turbine derated to 38MW (50MW). End A 25MW, End B 19MW.
 - C As of 1200 hours, November 06, 2015, Nalcor Exploits Grand Falls Unit 7 unavailable. No net impact to the Island Interconnected System.
 - D As of 1700 hours, November 16, 2015, Holyrood Unit 1 available. Derated to 150 MW (170 MW).
 - E As of 2226 hours, November 16, 2015, Holyrood Unit 3 unavailable (150 MW).
 - F At 0659 hours, November 17, 2015, Granite Canal Unit unavailable (40 MW).
 - G At 1106 hours, November 17, 2015, Bay d'Espoir Unit 3 unavailable (76.5 MW).
 - H At 1556 hours, November 17, 2015, Granite Canal Unit available (40 MW).
 - I At 1722 hours, November 17, 2015, Bay d'Espoir Unit 3 available (76.5 MW).

Section 2 Island Interconnected Supply and Demand

Wed, Nov 18, 2015	Island System Outlook ³	Seven-Day Forecast	Temperature (°C)		Island System Daily Peak Demand (MW) Forecast
			Morning	Evening	
Available Island System Supply: ⁵	1,700 MW	Wednesday, November 18, 2015	1	0	1,310
NLH Generation: ⁴	1,395 MW	Thursday, November 19, 2015	2	1	1,290
NLH Power Purchases:	95 MW	Friday, November 20, 2015	3	3	1,170
Other Island Generation:	210 MW	Saturday, November 21, 2015	5	3	1,150
Current St. John's Temperature:	0 °C	Sunday, November 22, 2015	2	2	1,135
Current St. John's Windchill:	N/A °C	Monday, November 23, 2015	6	7	1,180
7-Day Island Peak Demand Forecast:	1,310 MW	Tuesday, November 24, 2015	11	9	1,130

Supply Notes For November 18, 2015

- 3
- J At 0719 hours, November 18, 2015, Granite Canal Unit unavailable (40 MW).
- Notes:
1. Generation outages for running and corrective maintenance are included. These are not unusual for power system operations. They generally do not impact customer supply. The power system operators schedule outages to system equipment whenever possible to coincide with periods when customer demands are low and sufficient supply reserves are available. However, from time to time equipment outages are necessary and reserves may be impacted.
 2. Due to the Island Interconnected System being isolated from the larger North American grid, when there is a sudden loss of large generating units some customer's load must be interrupted for short periods to bring generation output equal to customer demand. This automatic action of power system protection, referred to as underfrequency load shedding, is necessary to ensure the integrity and reliability of system equipment. Underfrequency events typically occur 5 to 8 times per year on the Island Interconnected System and the resultant customer load interruptions are generally less than 30 minutes.
 3. As of 0800 Hours.
 4. Gross output including station service at Holyrood (24.5 MW) and improved NLH hydraulic output due to water levels (35 MW).
 5. Gross output from all Island sources (including Note 4).

Section 3 Island Peak Demand Information Previous Day Actual Peak and Current Day Forecast Peak

Tue, Nov 17, 2015	Actual Island Peak Demand ⁷	17:20	1,275 MW
Wed, Nov 18, 2015	Forecast Island Peak Demand		1,310 MW

Notes: 7. Island Demand is supplied by NLH generation and purchases, plus generation owned and operated by Newfoundland Power and Corner Brook Pulp & Paper (Deer Lake Power, DLP).