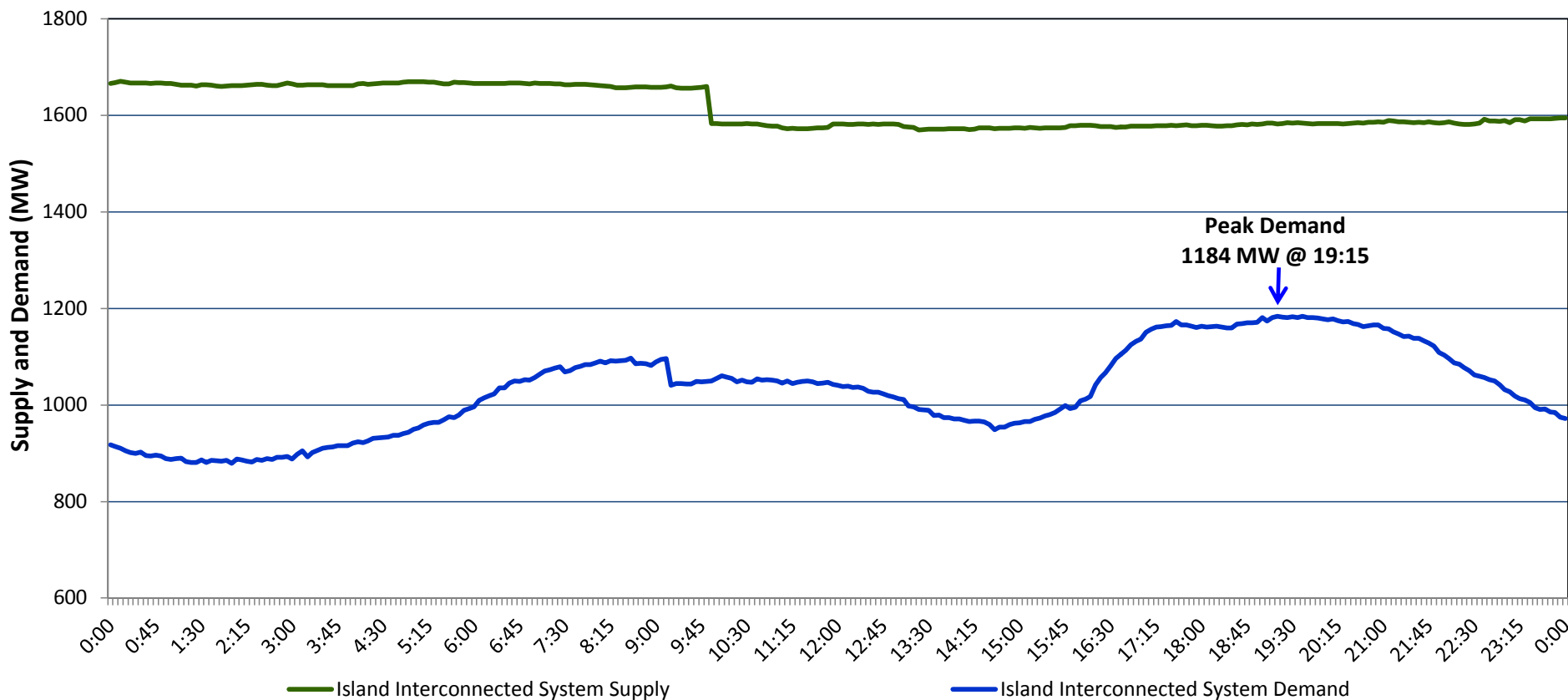


Newfoundland Labrador Hydro (NLH)
Supply and Demand Status Report Filed Thursday, November 12, 2015

Section 1
Island Interconnected System Supply and Demand
Actual 24 Hour System Performance For Wednesday, November 11, 2015



Supply Notes For November 11, 2015

- 1,2
- A As of 0949 hours, August 01, 2015, Holyrood Unit 1 removed from service for annual maintenance (170 MW).
- B As of 1605 hours, September 27, 2015, Bay d'Espoir Unit 4 unavailable (76.5 MW).
- C As of 0911 hours, November 01, 2015, Cat Arm Unit 1 unavailable (67 MW).
- D As of 1327 hours, November 04, 2015, Hardwoods Gas Turbine derated to 38MW (50MW). End A 25MW, End B 19MW.
- E As of 1200 hours, November 06, 2015, Nalcor Exploits Grand Falls Unit 7 unavailable. No net impact to the Island Interconnected System.
- F At 0955 hours, November 11, 2015, Bay d'Espoir Unit 5 unavailable (76.5 MW).

Section 2
Island Interconnected Supply and Demand

Thu, Nov 12, 2015	Island System Outlook ³	Seven-Day Forecast	Temperature (°C)		Island System Daily Peak Demand (MW) Forecast
			Morning	Evening	
Available Island System Supply: ⁵	1,585 MW	Thursday, November 12, 2015	0	1	1,275
NLH Generation: ⁴	1,290 MW	Friday, November 13, 2015	3	4	1,205
NLH Power Purchases:	95 MW	Saturday, November 14, 2015	5	6	1,145
Other Island Generation:	200 MW	Sunday, November 15, 2015	5	3	1,210
Current St. John's Temperature:	-1 °C	Monday, November 16, 2015	2	1	1,230
Current St. John's Windchill:	-7 °C	Tuesday, November 17, 2015	1	0	1,225
7-Day Island Peak Demand Forecast:	1,275 MW	Wednesday, November 18, 2015	0	2	1,200

Supply Notes For November 12, 2015

- 3
- Notes:
1. Generation outages for running and corrective maintenance are included. These are not unusual for power system operations. They generally do not impact customer supply. The power system operators schedule outages to system equipment whenever possible to coincide with periods when customer demands are low and sufficient supply reserves are available. However, from time to time equipment outages are necessary and reserves may be impacted.
 2. Due to the Island Interconnected System being isolated from the larger North American grid, when there is a sudden loss of large generating units some customer's load must be interrupted for short periods to bring generation output equal to customer demand. This automatic action of power system protection, referred to as underfrequency load shedding, is necessary to ensure the integrity and reliability of system equipment. Underfrequency events typically occur 5 to 8 times per year on the Island Interconnected System and the resultant customer load interruptions are generally less than 30 minutes.
 3. As of 0800 Hours.
 4. Gross output including station service at Holyrood (24.5 MW) and improved NLH hydraulic output due to water levels (35 MW).
 5. Gross output from all Island sources (including Note 4).

Section 3
Island Peak Demand Information
Previous Day Actual Peak and Current Day Forecast Peak

Wed, Nov 11, 2015	Actual Island Peak Demand ⁷	19:15	1,184 MW
Thu, Nov 12, 2015	Forecast Island Peak Demand		1,275 MW

Notes: 7. Island Demand is supplied by NLH generation and purchases, plus generation owned and operated by Newfoundland Power and Corner Brook Pulp & Paper (Deer Lake Power, DLP).