

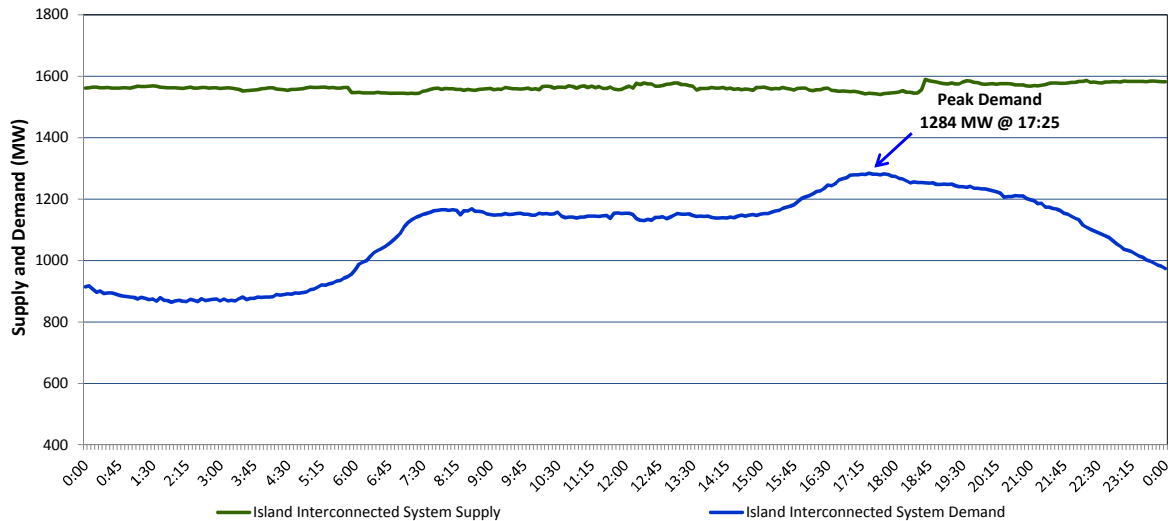
# Newfoundland Labrador Hydro (NLH)

## Supply and Demand Status Report Filed Friday, November 06, 2015

### Section 1

#### Island Interconnected System Supply and Demand

#### Actual 24 Hour System Performance For Thursday, November 05, 2015



#### Supply Notes For November 05, 2015 <sup>1,2</sup>

- A As of 0949 hours, August 01, 2015, Holyrood Unit 1 removed from service for annual maintenance (170 MW).
- B As of 1042 hours, August 31, 2015, Stephenville Gas Turbine unavailable. Previously derated to 30 MW (50 MW).
- C As of 1605 hours, September 27, 2015, Bay d'Espoir Unit 4 unavailable (76.5 MW).
- D As of 1825 hours, October 26, 2015, Nalcor Exploits Grand Falls Units 5-8 unavailable. No net impact to the Island Interconnected System.
- E As of 0911 hours, November 01, 2015, Cat Arm Unit 1 unavailable (67 MW).
- F As of 1327 hours, November 04, 2015, Hardwoods Gas Turbine derated to 38MW (50MW). End A 25MW, End B 19MW.
- G At 1838 hours, November 05, 2015, Hinds Lake Unit available, derated to 30 MW (75 MW).

### Section 2

#### Island Interconnected Supply and Demand

Fri, Nov 06, 2015		Island System Outlook <sup>3</sup>	Seven-Day Forecast	Temperature (°C)		Island System Daily Peak Demand (MW) Forecast
				Morning	Evening	
Available Island System Supply: <sup>5</sup>	1,540	MW	Friday, November 06, 2015	1	2	1,235
NLH Generation: <sup>4</sup>	1,245	MW	Saturday, November 07, 2015	12	8	1,080
NLH Power Purchases:	90	MW	Sunday, November 08, 2015	4	3	1,195
Other Island Generation:	205	MW	Monday, November 09, 2015	2	0	1,250
Current St. John's Temperature:	-1	°C	Tuesday, November 10, 2015	3	5	1,130
Current St. John's Windchill:	-5	°C	Wednesday, November 11, 2015	1	1	1,195
7-Day Island Peak Demand Forecast:	1,250	MW	Thursday, November 12, 2015	4	6	1,110

#### Supply Notes For November 06, 2015 <sup>3</sup>

H At 0644 hours, November 06, 2015, Hinds Lake Unit unavailable, previously derated to 30 MW (75 MW).

- Notes:
1. Generation outages for running and corrective maintenance are included. These are not unusual for power system operations. They generally do not impact customer supply. The power system operators schedule outages to system equipment whenever possible to coincide with periods when customer demands are low and sufficient supply reserves are available. However, from time to time equipment outages are necessary and reserves may be impacted.
  2. Due to the Island Interconnected System being isolated from the larger North American grid, when there is a sudden loss of large generating units some customer's load must be interrupted for short periods to bring generation output equal to customer demand. This automatic action of power system protection, referred to as underfrequency load shedding, is necessary to ensure the integrity and reliability of system equipment. Underfrequency events typically occur 5 to 8 times per year on the Island Interconnected System and the resultant customer load interruptions are generally less than 30 minutes.
  3. As of 0800 Hours.
  4. Gross output including station service at Holyrood (24.5 MW) and improved NLH hydraulic output due to water levels (35 MW).
  5. Gross output from all Island sources (including Note 4).

### Section 3

#### Island Peak Demand Information

#### Previous Day Actual Peak and Current Day Forecast Peak

Thu, Nov 05, 2015	Actual Island Peak Demand <sup>7</sup>	17:25	1,284 MW
Fri, Nov 06, 2015	Forecast Island Peak Demand		1,235 MW

Notes: 7. Island Demand is supplied by NLH generation and purchases, plus generation owned and operated by Newfoundland Power and Corner Brook Pulp & Paper (Deer Lake Power, DLP).