

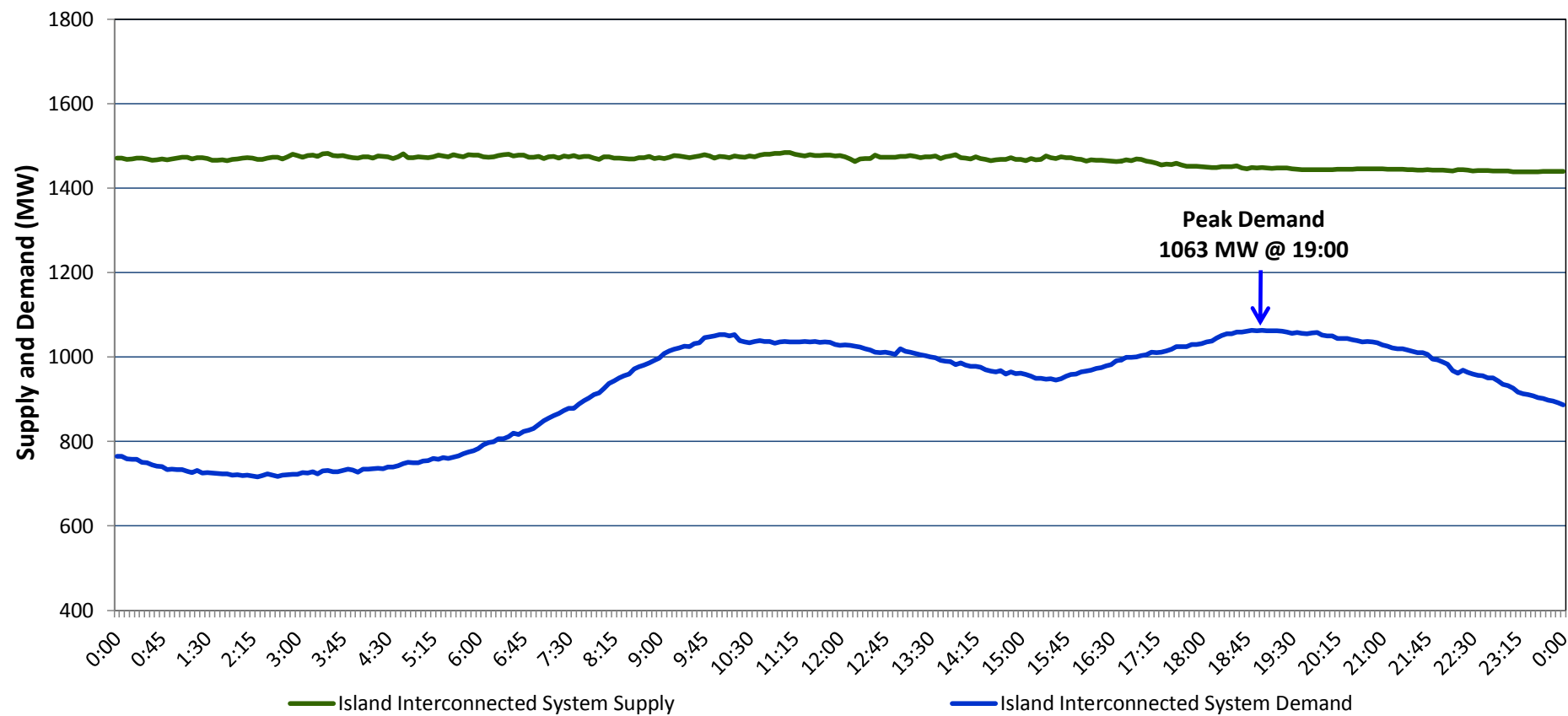
Newfoundland Labrador Hydro (NLH)

Supply and Demand Status Report Filed Monday, October 26, 2015

Section 1

Island Interconnected System Supply and Demand

Actual 24 Hour System Performance For Saturday, October 24, 2015



Supply Notes For October 24, 2015

- 1,2
- A

As of 0949 hours, August 01, 2015, Holyrood Unit 1 removed from service for annual maintenance (170 MW).
- B

As of 1042 hours, August 31, 2015, Stephenville Gas Turbine unavailable. Previously derated to 30 MW (50 MW).
- C

As of 1605 hours, September 27, 2015, Bay d'Espoir Unit 4 unavailable (76.5 MW).
- D

As of 1610 hours, October 11, 2015, Bay d'Espoir Unit 3 unavailable (76.5 MW).
- E

As of 0802 hours, October 23, 2015, Holyrood Combustion Turbine unavailable (123.5 MW).

Section 2

Island Interconnected Supply and Demand

Sun, Oct 25, 2015			Temperature (°C)		Island System Daily Peak Demand (MW)
Island System Outlook ³			Seven-Day Forecast		Forecast
			Morning	Evening	
Available Island System Supply: ⁵	1,480	MW	Sunday, October 25, 2015		1,060
NLH Generation: ⁴	1,185	MW	Monday, October 26, 2015		1,065
NLH Power Purchases:	85	MW	Tuesday, October 27, 2015		1,175
Other Island Generation:	210	MW	Wednesday, October 28, 2015		1,225
Current St. John's Temperature:	2	°C	Thursday, October 29, 2015		1,120
Current St. John's Windchill:	N/A	°C	Friday, October 30, 2015		990
7-Day Island Peak Demand Forecast:	1,225	MW	Saturday, October 31, 2015		1,090

Supply Notes For October 25, 2015

- 3
- Notes:
1.

Generation outages for running and corrective maintenance are included. These are not unusual for power system operations. They generally do not impact customer supply. The power system operators schedule outages to system equipment whenever possible to coincide with periods when customer demands are low and sufficient supply reserves are available. However, from time to time equipment outages are necessary and reserves may be impacted.
2.

Due to the Island Interconnected System being isolated from the larger North American grid, when there is a sudden loss of large generating units some customer's load must be interrupted for short periods to bring generation output equal to customer demand. This automatic action of power system protection, referred to as underfrequency load shedding, is necessary to ensure the integrity and reliability of system equipment. Underfrequency events typically occur 5 to 8 times per year on the Island Interconnected System and the resultant customer load interruptions are generally less than 30 minutes.
3.

As of 0800 Hours.
4.

Gross output including station service at Holyrood (24.5 MW) and improved NLH hydraulic output due to water levels (35 MW).
5.

Gross output from all Island sources (including Note 4).

Section 3

Island Peak Demand Information

Previous Day Actual Peak and Current Day Forecast Peak

Sat, Oct 24, 2015	Actual Island Peak Demand ⁷	19:00	1,063 MW
Sun, Oct 25, 2015	Forecast Island Peak Demand		1,060 MW

Notes: 7. Island Demand is supplied by NLH generation and purchases, plus generation owned and operated by Newfoundland Power and Corner Brook Pulp & Paper (Deer Lake Power, DLP).