

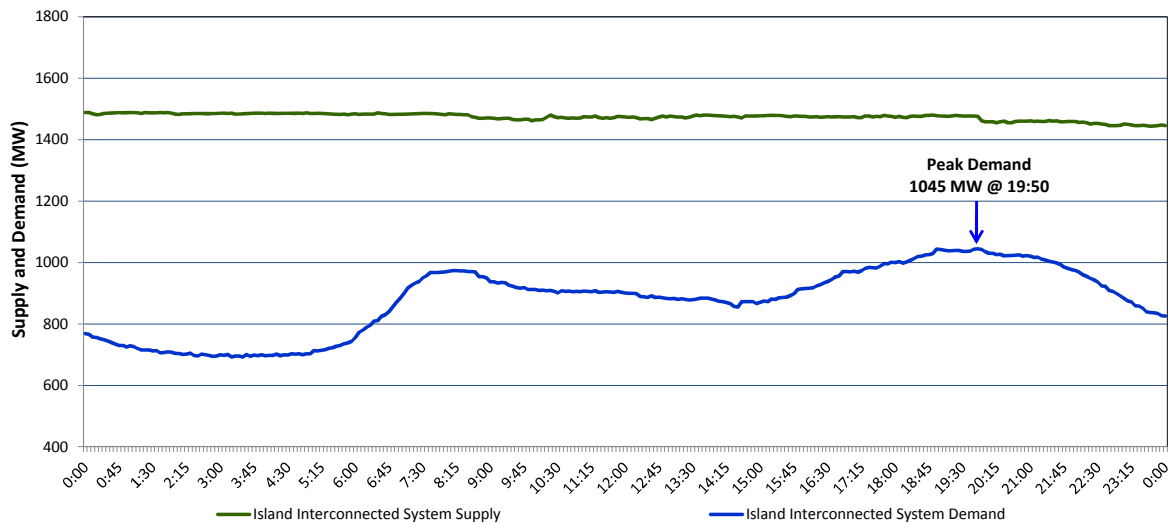
# Newfoundland Labrador Hydro (NLH)

## Supply and Demand Status Report Filed Thursday, October 22, 2015

### Section 1

#### Island Interconnected System Supply and Demand

#### Actual 24 Hour System Performance For Wednesday, October 21, 2015



#### Supply Notes For October 21, 2015

- <sup>1,2</sup>
- A As of 0949 hours, August 01, 2015, Holyrood Unit 1 removed from service for annual maintenance (170 MW).
- B As of 1042 hours, August 31, 2015, Stephenville Gas Turbine unavailable. Previously derated to 30 MW (50 MW).
- C As of 1605 hours, September 27, 2015, Bay d'Espoir Unit 4 unavailable (76.5 MW).
- D As of 1527 hours, October 07, 2015, Holyrood Unit 3 removed from service for economic dispatch (150 MW).
- E As of 1610 hours, October 11, 2015, Bay d'Espoir Unit 3 unavailable (76.5 MW).
- F As of 1156 hours, October 18, 2015, Nalcor Exploits Unit 9 unavailable (30 MW). Net impact to Island System is 10 MW.
- G At 2000 hours, October 21, 2015, Hardwoods Gas Turbine End B unavailable (19MW). Previously derated to 38MW (50MW). End A 20MW, End B 19MW.

### Section 2

#### Island Interconnected Supply and Demand

Thu, Oct 22, 2015		Island System Outlook <sup>3</sup>	Seven-Day Forecast	Temperature (°C)		Island System Daily Peak Demand (MW) Forecast
				Morning	Evening	
Available Island System Supply: <sup>5</sup>	1,440	MW	Thursday, October 22, 2015	4	3	1,105
NLH Generation: <sup>4</sup>	1,140	MW	Friday, October 23, 2015	8	11	1,000
NLH Power Purchases:	90	MW	Saturday, October 24, 2015	6	4	1,010
Other Island Generation:	210	MW	Sunday, October 25, 2015	3	5	995
Current St. John's Temperature:	2	°C	Monday, October 26, 2015	9	10	960
Current St. John's Windchill:	N/A	°C	Tuesday, October 27, 2015	3	2	1,090
7-Day Island Peak Demand Forecast:	1,145	MW	Wednesday, October 28, 2015	1	4	1,145

#### Supply Notes For October 22, 2015

- <sup>3</sup>
- Notes:
1. Generation outages for running and corrective maintenance are included. These are not unusual for power system operations. They generally do not impact customer supply. The power system operators schedule outages to system equipment whenever possible to coincide with periods when customer demands are low and sufficient supply reserves are available. However, from time to time equipment outages are necessary and reserves may be impacted.
  2. Due to the Island Interconnected System being isolated from the larger North American grid, when there is a sudden loss of large generating units some customer's load must be interrupted for short periods to bring generation output equal to customer demand. This automatic action of power system protection, referred to as underfrequency load shedding, is necessary to ensure the integrity and reliability of system equipment. Underfrequency events typically occur 5 to 8 times per year on the Island Interconnected System and the resultant customer load interruptions are generally less than 30 minutes.
  3. As of 0800 Hours.
  4. Gross output including station service at Holyrood (24.5 MW) and improved NLH hydraulic output due to water levels (35 MW).
  5. Gross output from all Island sources (including Note 4).

### Section 3

#### Island Peak Demand Information

#### Previous Day Actual Peak and Current Day Forecast Peak

Wed, Oct 21, 2015	Actual Island Peak Demand <sup>7</sup>	19:50	1,045 MW
Thu, Oct 22, 2015	Forecast Island Peak Demand		1,105 MW

Notes: 7. Island Demand is supplied by NLH generation and purchases, plus generation owned and operated by Newfoundland Power and Corner Brook Pulp & Paper (Deer Lake Power, DLP).