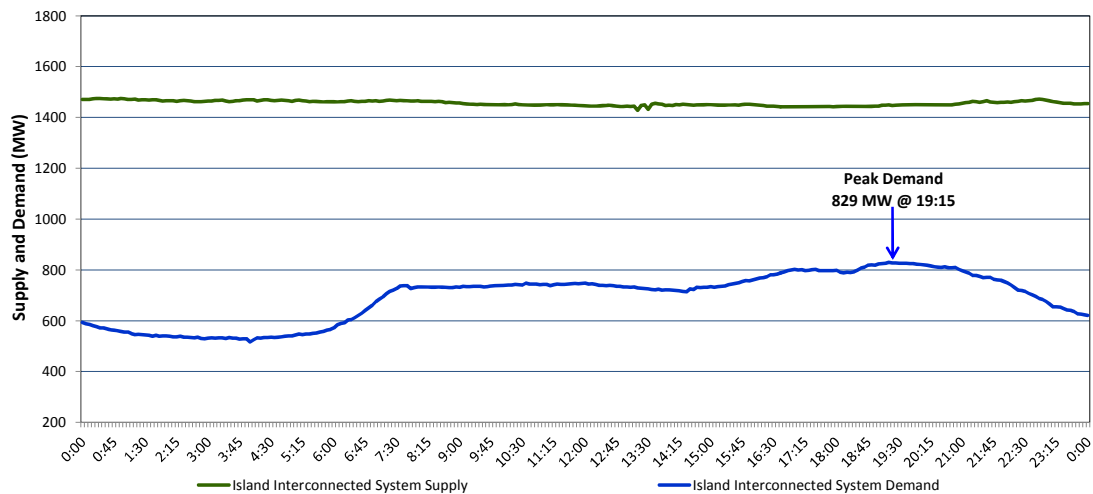


## Newfoundland Labrador Hydro (NLH) Supply and Demand Status Report Filed Friday, October 16, 2015

### Section 1 Island Interconnected System Supply and Demand Actual 24 Hour System Performance For Thursday, October 15, 2015



#### Supply Notes For October 15, 2015

- 1,2
- A** As of 0949 hours, August 01, 2015, Holyrood Unit 1 removed from service for annual maintenance (170 MW).
- B** As of 1042 hours, August 31, 2015, Stephenville Gas Turbine unavailable. Previously derated to 30 MW (50 MW).
- C** As of 1605 hours, September 27, 2015, Bay d'Espoir Unit 4 unavailable (76.5 MW).
- D** As of 1527 hours, October 07, 2015, Holyrood Unit 3 removed from service for economic dispatch (150 MW).
- E** As of 0810 hours, October 08, 2015, St. Anthony Unit 544 (G6) unavailable (2 MW).
- F** As of 1608 hours, October 09, 2015, Hardwoods Gas Turbine available. Derated to 38 MW (50 MW). End A 20 MW, End B 19 MW.
- G** As of 1610 hours, October 11, 2015, Bay d'Espoir Unit 3 unavailable (76.5 MW).
- H** At 1311 hours, October 15, 2015, Star Lake Unit unavailable (18 MW).
- I** At 1334 hours, October 15, 2015, Star Lake Unit available (18 MW).
- J** At 1523 hours, October 15, 2015, Hawke's Bay Unit 548 (G2) available (2.5 MW).

### Section 2 Island Interconnected Supply and Demand

Fri, Oct 16, 2015	Island System Outlook <sup>3</sup>	Seven-Day Forecast	Temperature (°C)		Island System Daily Peak Demand (MW)
			Morning	Evening	
Available Island System Supply: <sup>5</sup>	1,460 MW	Friday, October 16, 2015	7	6	880
NLH Generation: <sup>4</sup>	1,155 MW	Saturday, October 17, 2015	10	9	850
NLH Power Purchases:	100 MW	Sunday, October 18, 2015	5	8	990
Other Island Generation:	205 MW	Monday, October 19, 2015	5	4	1,055
Current St. John's Temperature:	5 °C	Tuesday, October 20, 2015	3	5	1,070
Current St. John's Windchill:	N/A °C	Wednesday, October 21, 2015	12	5	1,045
7-Day Island Peak Demand Forecast:	1,070 MW	Thursday, October 22, 2015	5	5	1,015

#### Supply Notes For October 16, 2015

- 3
- Notes:
- Generation outages for running and corrective maintenance are included. These are not unusual for power system operations. They generally do not impact customer supply. The power system operators schedule outages to system equipment whenever possible to coincide with periods when customer demands are low and sufficient supply reserves are available. However, from time to time equipment outages are necessary and reserves may be impacted.
  - Due to the Island Interconnected System being isolated from the larger North American grid, when there is a sudden loss of large generating units some customer's load must be interrupted for short periods to bring generation output equal to customer demand. This automatic action of power system protection, referred to as underfrequency load shedding, is necessary to ensure the integrity and reliability of system equipment. Underfrequency events typically occur 5 to 8 times per year on the Island Interconnected System and the resultant customer load interruptions are generally less than 30 minutes.
  - As of 0800 Hours.
  - Gross output including station service at Holyrood (24.5 MW) and improved NLH hydraulic output due to water levels (35 MW).
  - Gross output from all Island sources (including Note 4).

### Section 3 Island Peak Demand Information Previous Day Actual Peak and Current Day Forecast Peak

Thu, Oct 15, 2015	Actual Island Peak Demand <sup>7</sup>	19:15	829 MW
Fri, Oct 16, 2015	Forecast Island Peak Demand		880 MW

Notes: 7. Island Demand is supplied by NLH generation and purchases, plus generation owned and operated by Newfoundland Power and Corner Brook Pulp & Paper (Deer Lake Power, DLP).