

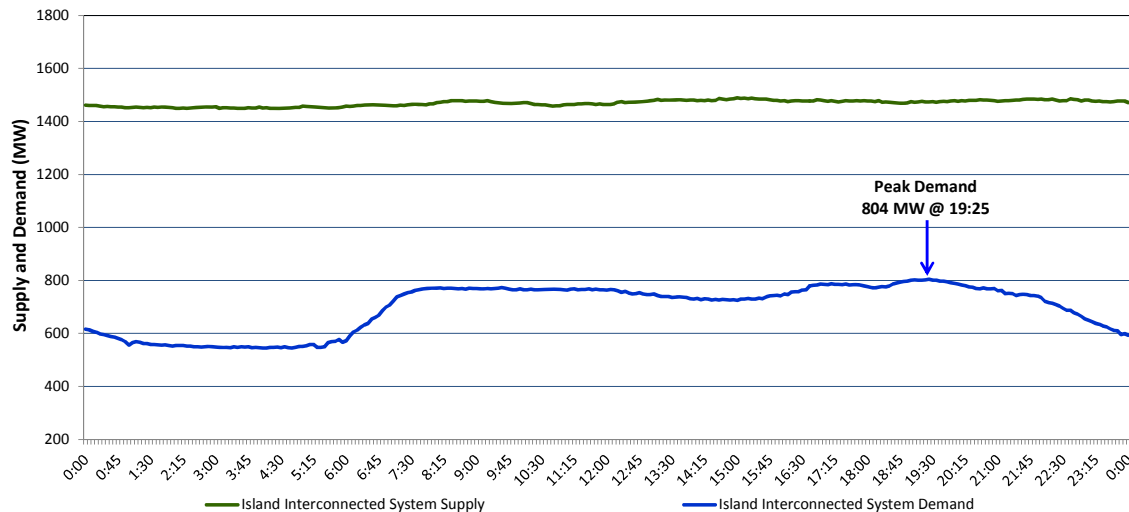
Newfoundland Labrador Hydro (NLH)

Supply and Demand Status Report Filed Thursday, October 15, 2015

Section 1

Island Interconnected System Supply and Demand

Actual 24 Hour System Performance For Wednesday, October 14, 2015



Supply Notes For October 14, 2015

- A** As of 1450 hours, June 24, 2015, Hawke's Bay Unit 548 (G2) unavailable (2.5 MW).
B As of 0949 hours, August 01, 2015, Holyrood Unit 1 removed from service for annual maintenance (170 MW).
C As of 1042 hours, August 31, 2015, Stephenville Gas Turbine unavailable. Previously derated to 30 MW (50 MW).
D As of 1605 hours, September 27, 2015, Bay d'Espoir Unit 4 unavailable (76.5 MW).
E As of 1527 hours, October 07, 2015, Holyrood Unit 3 removed from service for economic dispatch (150 MW).
F As of 0810 hours, October 08, 2015, St. Anthony Unit 544 (G6) unavailable (2 MW).
G As of 1608 hours, October 09, 2015, Hardwoods Gas Turbine available. Derated to 38 MW (50 MW). End A 20 MW, End B 19 MW.
H As of 1610 hours, October 11, 2015, Bay d'Espoir Unit 3 unavailable (76.5 MW).

Section 2

Island Interconnected Supply and Demand

Thu, Oct 15, 2015 Island System Outlook ³		Seven-Day Forecast		Temperature (°C)		Island System Daily Peak Demand (MW)
				Morning	Evening	Forecast
Available Island System Supply: ⁵	1,480 MW	Thursday, October 15, 2015		14	12	855
NLH Generation: ⁴	1,155 MW	Friday, October 16, 2015		7	7	880
NLH Power Purchases:	120 MW	Saturday, October 17, 2015		11	10	850
Other Island Generation:	205 MW	Sunday, October 18, 2015		8	8	930
Current St. John's Temperature:	13 °C	Monday, October 19, 2015		4	5	1,080
Current St. John's Windchill:	N/A °C	Tuesday, October 20, 2015		5	5	1,045
7-Day Island Peak Demand Forecast:	1,080 MW	Wednesday, October 21, 2015		5	6	975

Supply Notes For October 15, 2015

- Notes: 1. Generation outages for running and corrective maintenance are included. These are not unusual for power system operations. They generally do not impact customer supply. The power system operators schedule outages to system equipment whenever possible to coincide with periods when customer demands are low and sufficient supply reserves are available. However, from time to time equipment outages are necessary and reserves may be impacted.
2. Due to the Island Interconnected System being isolated from the larger North American grid, when there is a sudden loss of large generating units some customer's load must be interrupted for short periods to bring generation output equal to customer demand. This automatic action of power system protection, referred to as underfrequency load shedding, is necessary to ensure the integrity and reliability of system equipment. Underfrequency events typically occur 5 to 8 times per year on the Island Interconnected System and the resultant customer load interruptions are generally less than 30 minutes.
3. As of 0800 Hours.
4. Gross output including station service at Holyrood (24.5 MW) and improved NLH hydraulic output due to water levels (35 MW).
5. Gross output from all Island sources (including Note 4).

Section 3

Island Peak Demand Information

Previous Day Actual Peak and Current Day Forecast Peak

Wed, Oct 14, 2015	Actual Island Peak Demand ⁷	19:25	804 MW
Thu, Oct 15, 2015	Forecast Island Peak Demand		855 MW

Notes: 7. Island Demand is supplied by NLH generation and purchases, plus generation owned and operated by Newfoundland Power and Corner Brook Pulp & Paper (Deer Lake Power, DLP).